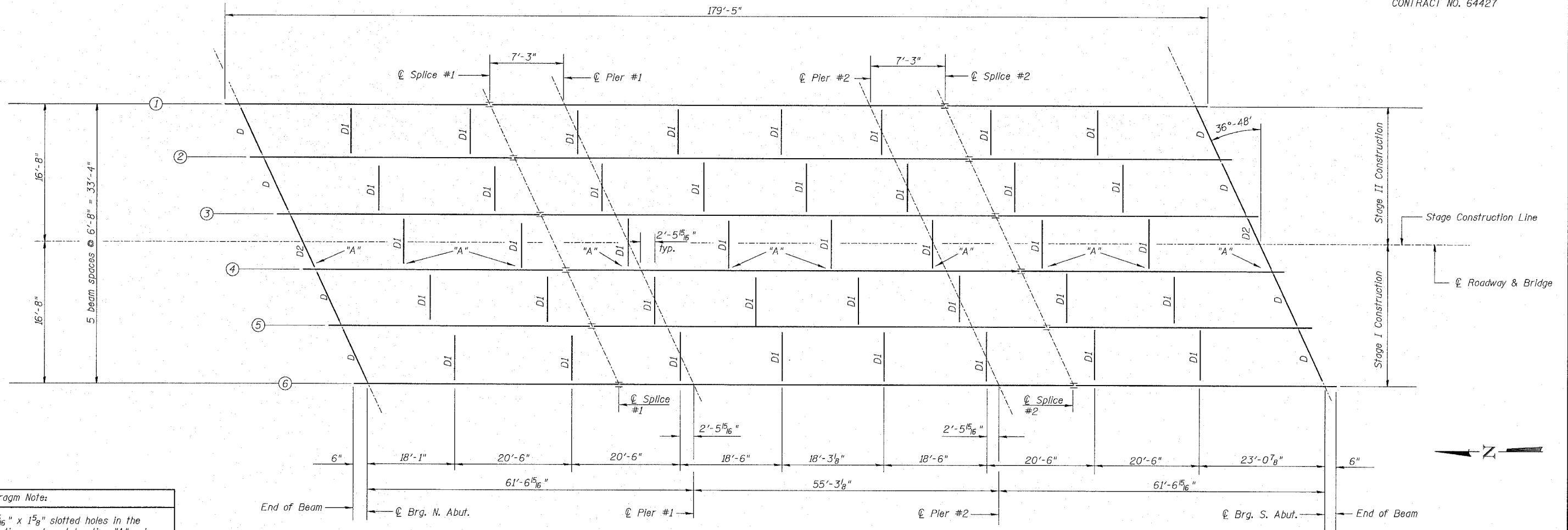


STATE OF ILLINOIS
DEPARTMENT OF TRANSPORTATION

ROUTE NO.	SECTION	COUNTY	TOTAL SHEETS	SHEET NO.
S. B. I.	(102)	Whiteside	69	29
F. A.	646 BR-2			
FED. ROAD DIST. NO. 7	ILLINOIS FED. AID PROJECT-			

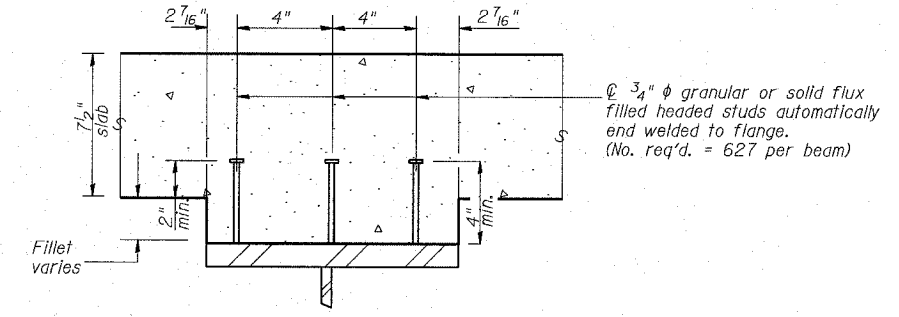
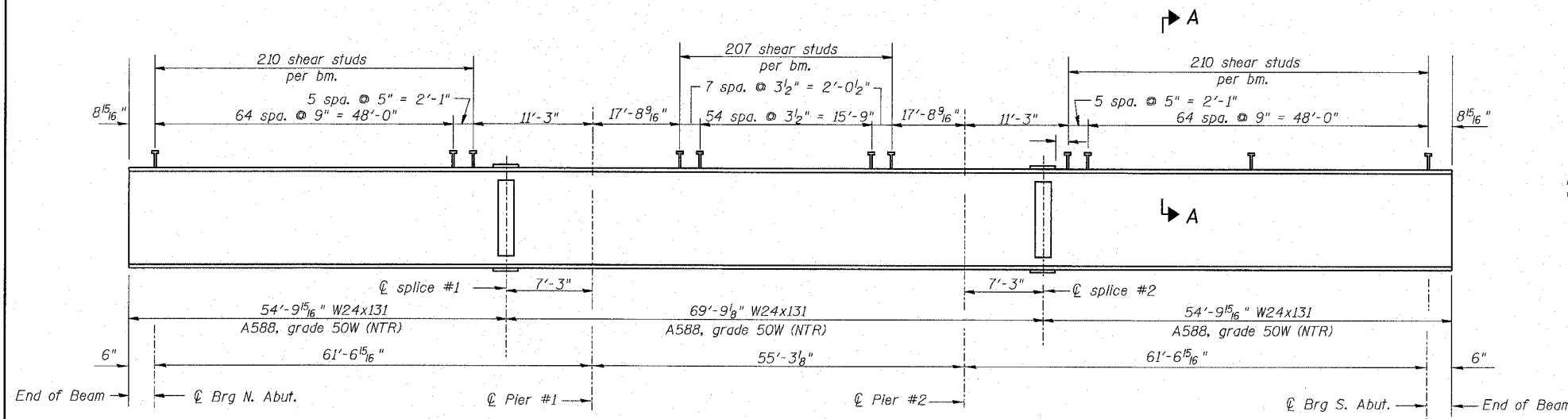
CONTRACT NO. 64427

SHEET NO. 9
25 SHEETS



Diaphragm Note:
Use 1 5/16" x 1 5/8" slotted holes in the connection angles at location "A" only. Provide 1/4" plate washers for slotted holes.
Bolts shall be finger tightened prior to the deck pour for stage II construction and then fully tightened after completion of the deck pour for stage II construction.

FRAMING PLAN



SECTION A-A

BEAM ELEVATION

Note: NTR denotes Notch Toughness Requirements

**STRUCTURAL STEEL
FRAMING PLAN**
IL RTE 40 OVER GREEN RIVER
F.A.P. 646 SECTION (102)BR-2
WHITESIDE COUNTY
STATION 674+77.63
S.N. 098-0018

DESIGNED	DDB	RANDOLPH & ASSOCIATES, INC. 111 N. POWERS AVENUE, PEORIA, IL 61604-3444 TEL: 309-691-8811 FAX: 309-691-8888 11-080-001-1001 HTTP://WWW.RANDOLPHINC.COM CONSULTING ENGINEERS & LAND SURVEYORS	FILE NUMBER	136.111
CHECKED	JFJ		DATE	Aug.
DRAWN	JDB			2005
CHECKED	DDB			

R:\Projects\0136\0136-111 green.ph\1\Bridge Plans\09 STRUCTURAL STEEL FRAMING PLAN.dgn

9:44:36 AM

8/9/2005