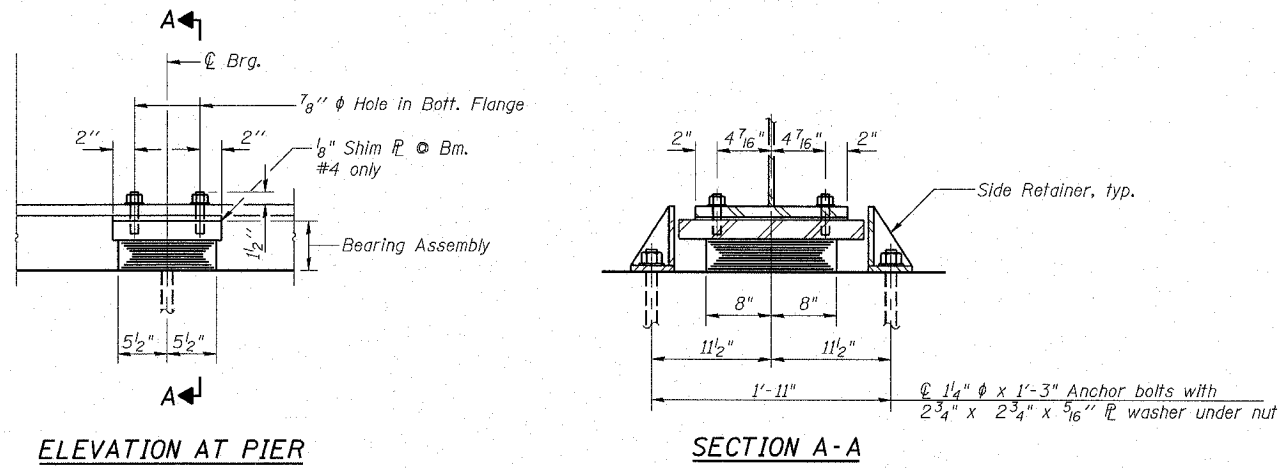


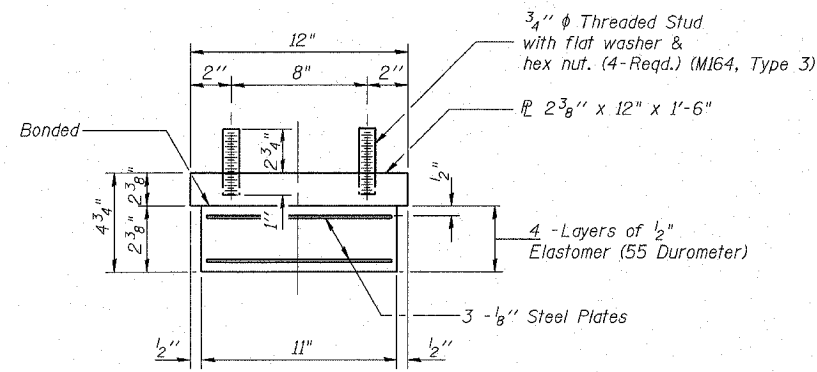
STATE OF ILLINOIS
DEPARTMENT OF TRANSPORTATION

ROUTE NO.	SECTION	COUNTY	TOTAL SHEETS	SHEET NO.	SHEET NO. 12 25 SHEETS
S. B. I.	(102)	Whiteside	69	32	
F. A. 646	BR-2				
FED. ROAD DIST. NO. 7	ILLINOIS	FED. AID PROJECT-			

CONTRACT NO. 64427

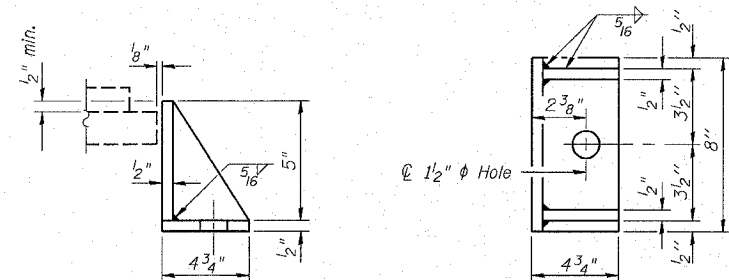


TYPE I ELASTOMERIC EXP. BRG. - PIER #1
6 required



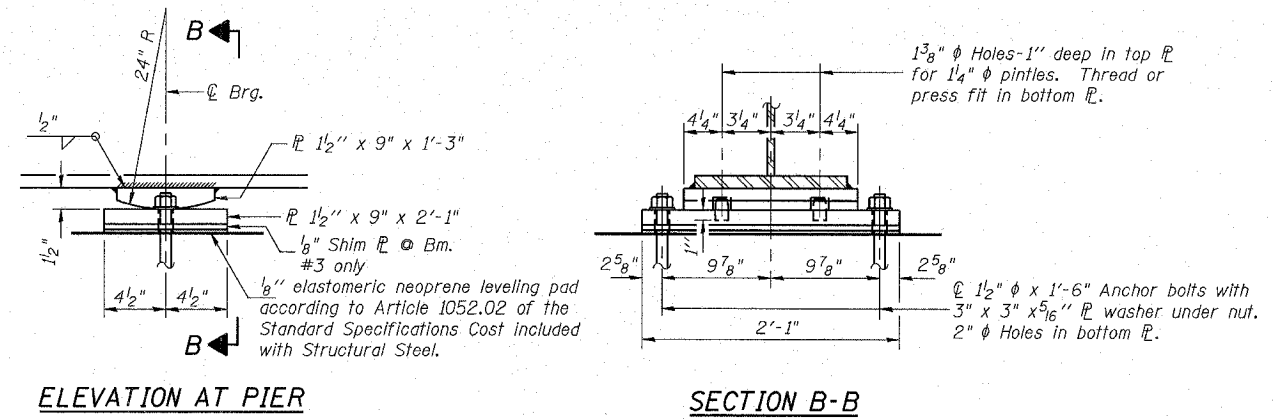
BEARING ASSEMBLY - PIER #1

Note: Shim plates shall not be placed under Bearing Assembly.



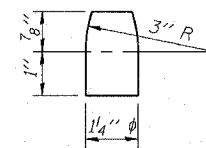
SIDE RETAINER - PIER #1

Equivalent rolled angle with stiffeners will be allowed in lieu of welded plates. Weight included with Structural Steel.



FIXED BEARINGS AT PIER #2
6 required

Notes: Anchor bolts at fixed bearings may be built into the masonry. See sheet 13 for Anchor Bolt installation.



BILL OF MATERIAL

Item	Unit	Total
Elastomeric Bearing Assembly Type 1	Each	6

PIER BEARINGS
IL RTE 40 OVER GREEN RIVER
F.A.P. 646 SECTION (102)BR-2
WHITESIDE COUNTY
STATION 674+77.63
S.N. 098-0018

DESIGNED	DDB	RANDOLPH & ASSOCIATES, INC. 111 N. FRONT STREET, PORTA, IL 60453-0214 TEL: 815-493-8844 FAX: 815-493-8828 1-800-461-8011 HTTP://WWW.RANDOLPHINC.COM CONSULTING ENGINEERS • LAND SURVEYORS	FILE NUMBER	136.111
CHECKED	JFJ		DATE	Aug. 2005
DRAWN	JDB			
CHECKED	DDB			

R:\Projects\0136\0136-111 green.ph 1\Br Edge Plans\12 BEARINGS.dgn

9:47:05 AM

8/9/2005