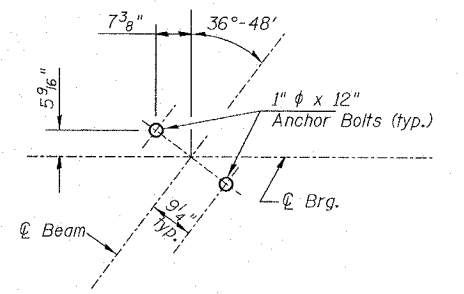


STATE OF ILLINOIS
DEPARTMENT OF TRANSPORTATION

ROUTE NO.	SECTION	COUNTY	TOTAL SHEETS	SHEET NO.
S.B.L. F.A. 646	BR-2	Whiteside	69	34
FED. ROAD DIST. NO. 7		ILLINOIS	FED. AID PROJECT-	

SHEET NO. 14
25 SHEETS

CONTRACT NO. 64427



ANCHOR BOLT LAYOUT DETAIL

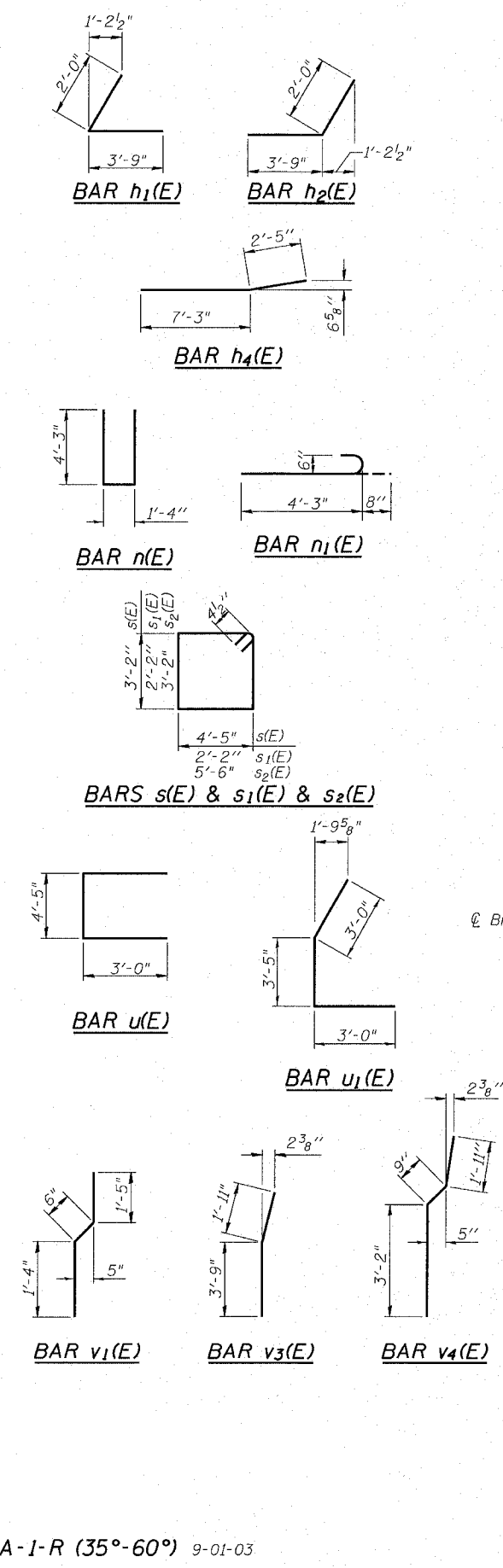
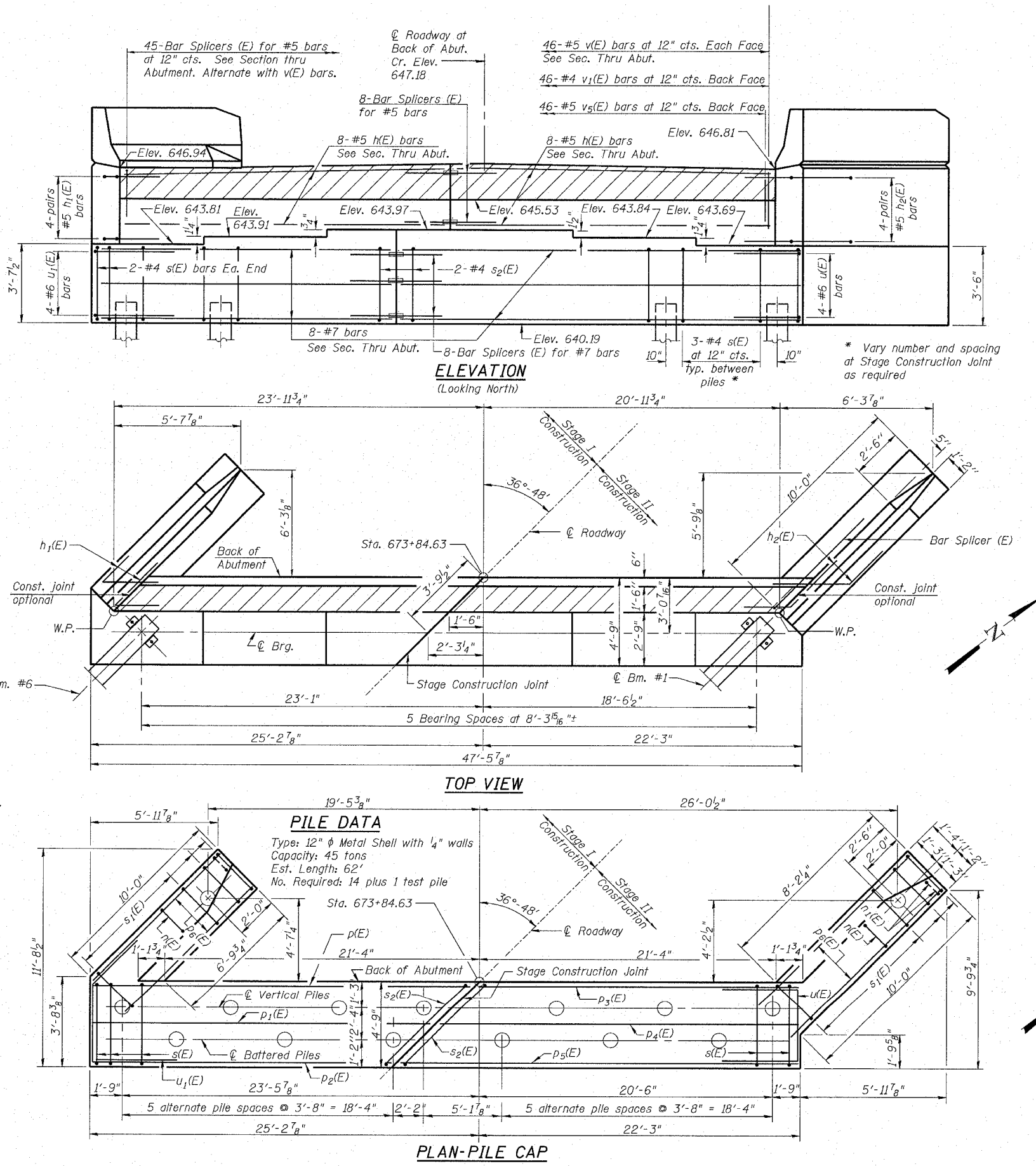
NORTH ABUTMENT
BILL OF MATERIAL

Bar	No.	Size	Length	Shape
h(E)	16	#5	22'-1"	
h ₁ (E)	8	#5	5'-9"	
h ₂ (E)	8	#5	5'-9"	
h ₃ (E)	20	#4	9'-8"	
h ₄ (E)	12	#4	9'-8"	
n(E)	16	#6	9'-10"	
n ₁ (E)	12	#6	4'-11"	
p(E)	3	#7	24'-0"	
p ₁ (E)	2	#7	23'-1"	
p ₂ (E)	3	#7	21'-5"	
p ₃ (E)	3	#7	22'-0"	
p ₄ (E)	2	#7	23'-8"	
p ₅ (E)	3	#7	25'-3"	
p ₆ (E)	12	#7	9'-9"	
s(E)	40	#4	15'-11"	
s ₁ (E)	22	#4	9'-5"	
s ₂ (E)	2	#4	18'-1"	
u(E)	4	#6	10'-5"	
u ₁ (E)	4	#6	9'-5"	
v(E)	92	#5	4'-10"	
v ₁ (E)	46	#4	3'-3"	
v ₂ (E)	22	#6	5'-6"	
v ₃ (E)	6	#6	5'-8"	
v ₄ (E)	16	#6	5'-10"	
v ₅ (E)	46	#5	2'-4"	
Structure Excavation		Cu. Yd.	140.9	
Concrete Structures		Cu. Yd.	44.9	
Reinforcement Bars, Epoxy Coated		Pound	3750	
Furnishing Metal Shell Piles 12"		Ft.	868	
Bridge Seat Sealer		Sq. Ft.	131	
Test Piles		Each	1	
Driving and Filling Shells		Ft.	868	

Notes:
1. Reinforcement bars designated (E) shall be epoxy coated.
2. For details of Bar Splicers, see sheet 21 of 25.

NORTH ABUTMENT
IL RTE 40 OVER GREEN RIVER
F.A.P. 646 SECTION (102)BR-2
WHITESIDE COUNTY
STATION 674+77.63
S.N. 098-0018

DESIGNED	DDB		FILE NUMBER	136.111
CHECKED	JFB		DATE	Aug. 2005
DRAWN	JDB			
CHECKED	DDB			



PILE DATA
Type: 12" φ Metal Shell with 1/4" walls
Capacity: 45 tons
Est. Length: 62'
No. Required: 14 plus 1 test pile

R:\Projects\0136\0136-111 green.ph 1\Br. Iage P.lanset\14 NORTH ABUT.dgn 9/29/2005 9:59:03 AM

A-1-R (35°-60°) 9-01-03