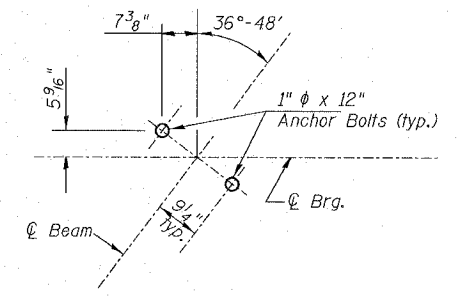
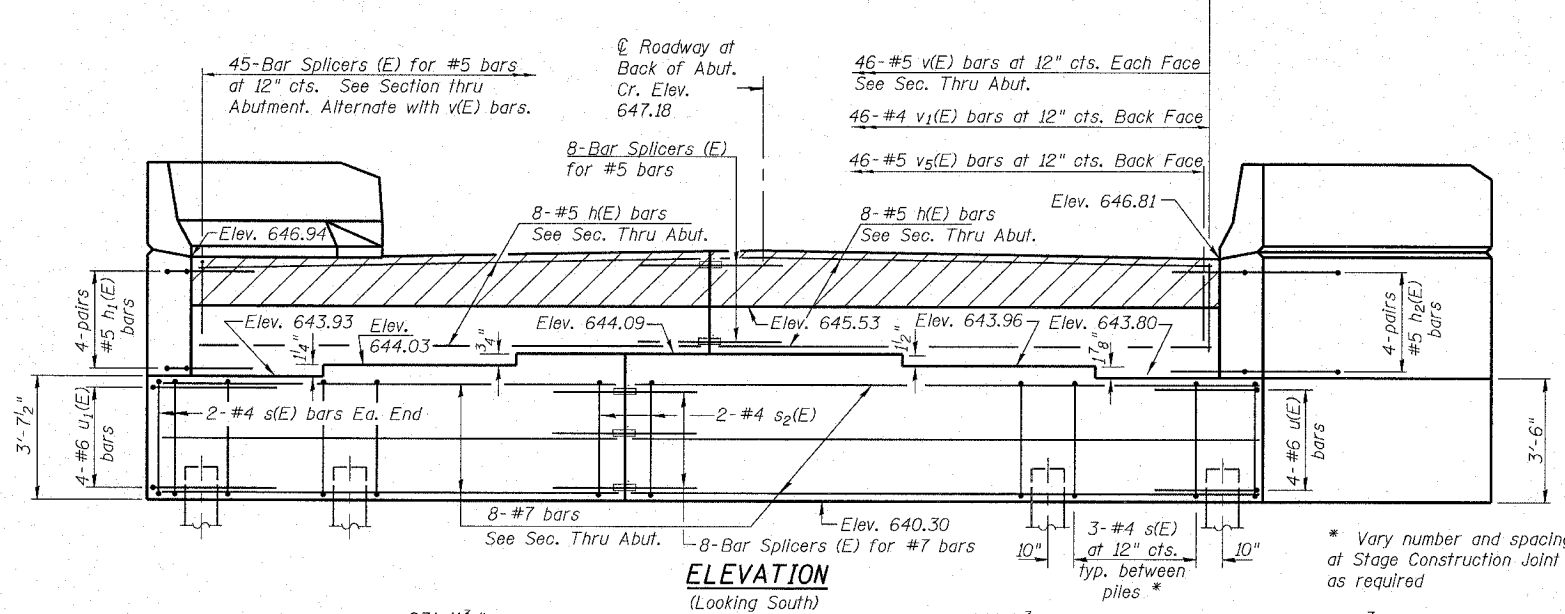
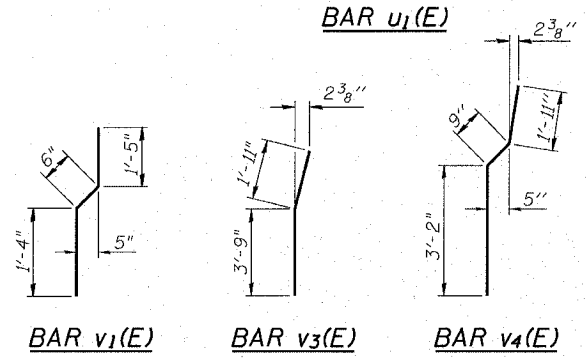
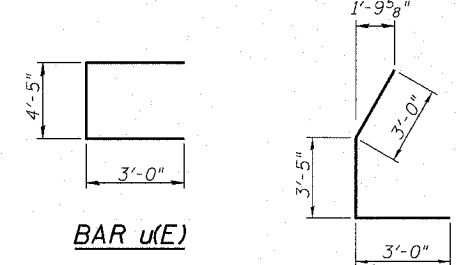
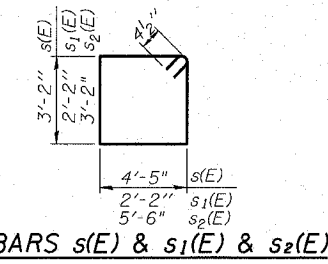
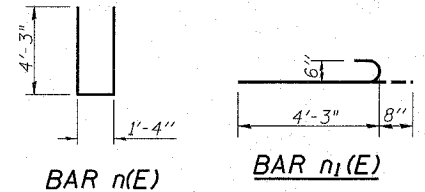
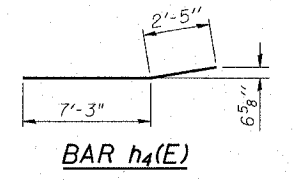
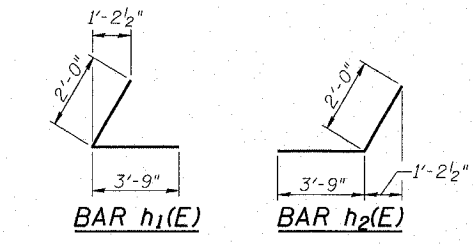


STATE OF ILLINOIS
DEPARTMENT OF TRANSPORTATION

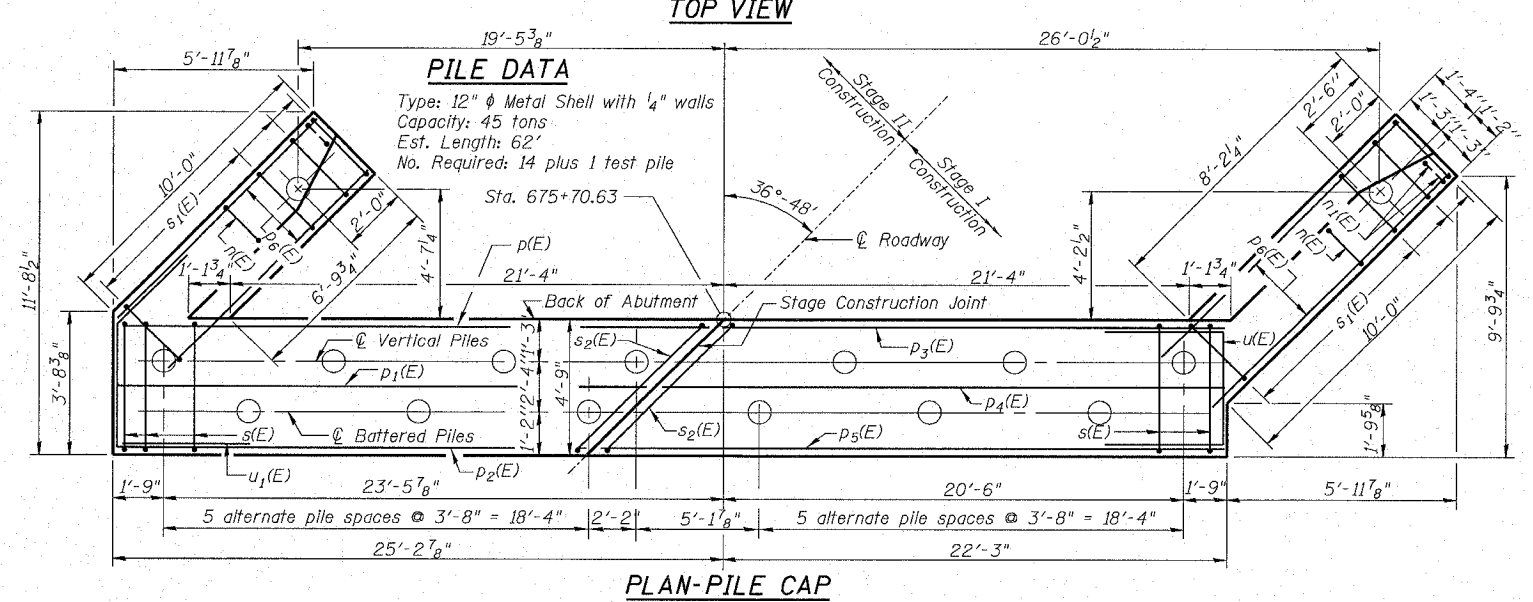
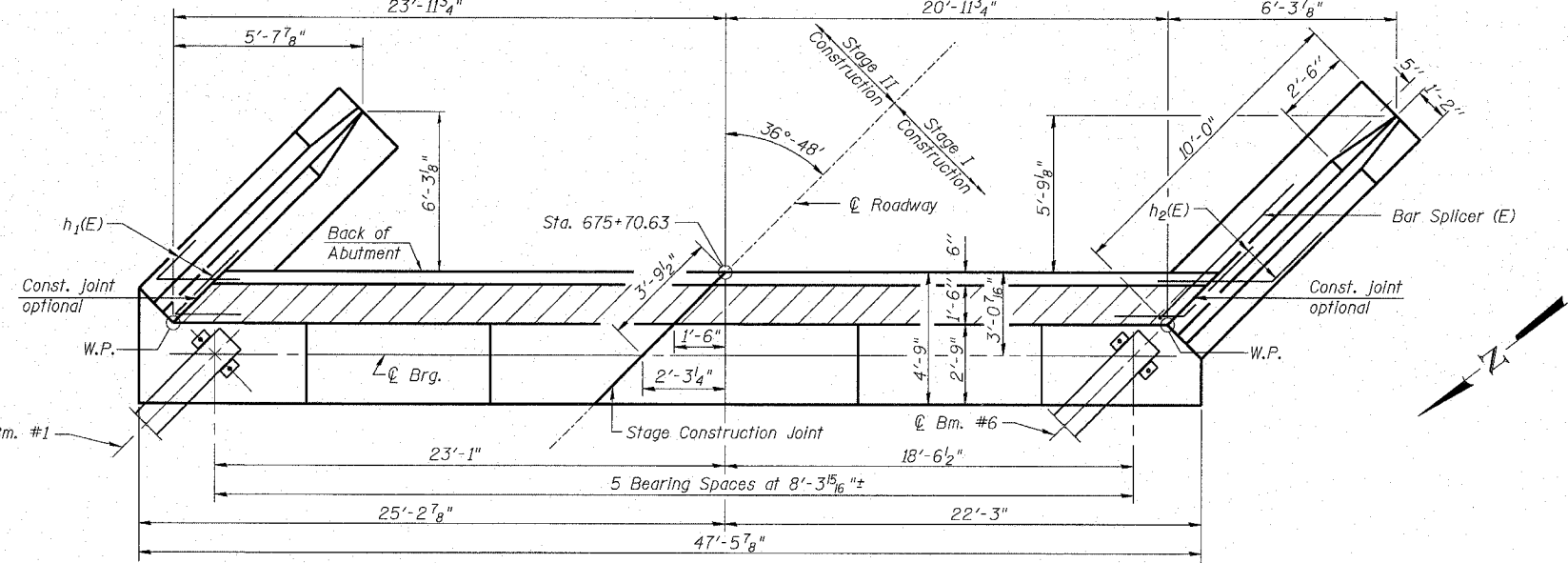
ROUTE NO.	SECTION	COUNTY	TOTAL SHEETS	SHEET NO.
S. B. I. F. A. 646	(102) BR-2	Whiteside	69	36
ILLINOIS FED. AID PROJECT-		CONTRACT NO. 64427		

SHEET NO. 16
25 SHEETS



**SOUTH ABUTMENT
BILL OF MATERIAL**

Bar	No.	Size	Length	Shape
h(E)	16	#5	22'-1"	—
h ₁ (E)	8	#5	5'-9"	—
h ₂ (E)	8	#5	5'-9"	—
h ₃ (E)	20	#4	9'-8"	—
h ₄ (E)	12	#4	9'-8"	—
n(E)	16	#6	9'-10"	—
n ₁ (E)	12	#6	4'-11"	—
p(E)	3	#7	24'-0"	—
p ₁ (E)	2	#7	23'-1"	—
p ₂ (E)	3	#7	21'-5"	—
p ₃ (E)	3	#7	22'-0"	—
p ₄ (E)	2	#7	23'-8"	—
p ₅ (E)	3	#7	25'-3"	—
p ₆ (E)	12	#7	9'-9"	—
s(E)	40	#4	15'-11"	—
s ₁ (E)	22	#4	9'-5"	—
s ₂ (E)	2	#4	18'-1"	—
u(E)	4	#6	10'-5"	—
u ₁ (E)	4	#6	9'-5"	—
v(E)	92	#5	4'-10"	—
v ₁ (E)	46	#4	3'-3"	—
v ₂ (E)	22	#6	5'-6"	—
v ₃ (E)	6	#6	5'-8"	—
v ₄ (E)	16	#6	5'-10"	—
v ₅ (E)	46	#5	2'-4"	—
Structure Excavation		Cu. Yd.	138.7	
Concrete Structures		Cu. Yd.	44.3	
Reinforcement Bars, Epoxy Coated		Pound	3750	
Furnishing Metal Shell Piles 12"		Ft.	868	
Bridge Seat Sealer		Sq. Ft.	131	
Test Piles		Each	1	
Driving and Filling Shells		Ft.	868	



Reinforcement bars designated (E) shall be epoxy coated.
For details of Bar Splicers, see sheet 21 of 25.

**SOUTH ABUTMENT
IL RTE 40 OVER GREEN RIVER
F.A.P. 646 SECTION (102)BR-2
WHITESIDE COUNTY
STATION 674+77.63
S.N. 098-0018**

DESIGNED	DDB	RANDOLPH & ASSOCIATES, INC. 111 N. POWER STREET, PEORIA, IL 61604-2214 TEL: 309-693-2000 FAX: 309-693-2001 HTTP://WWW.RANDOLPHINC.COM	FILE NUMBER	136.111
CHECKED	JFJ		DATE	Aug. 2005
DRAWN	JDB			
CHECKED	DDB			

R:\Projects\0136\0136-111 green.ph 1\Brldge Plans\16 SOUTH ABUT.dgn
 10/01/02 AM
 8/9/2005

A-1-R (35°-60°) 9-01-03