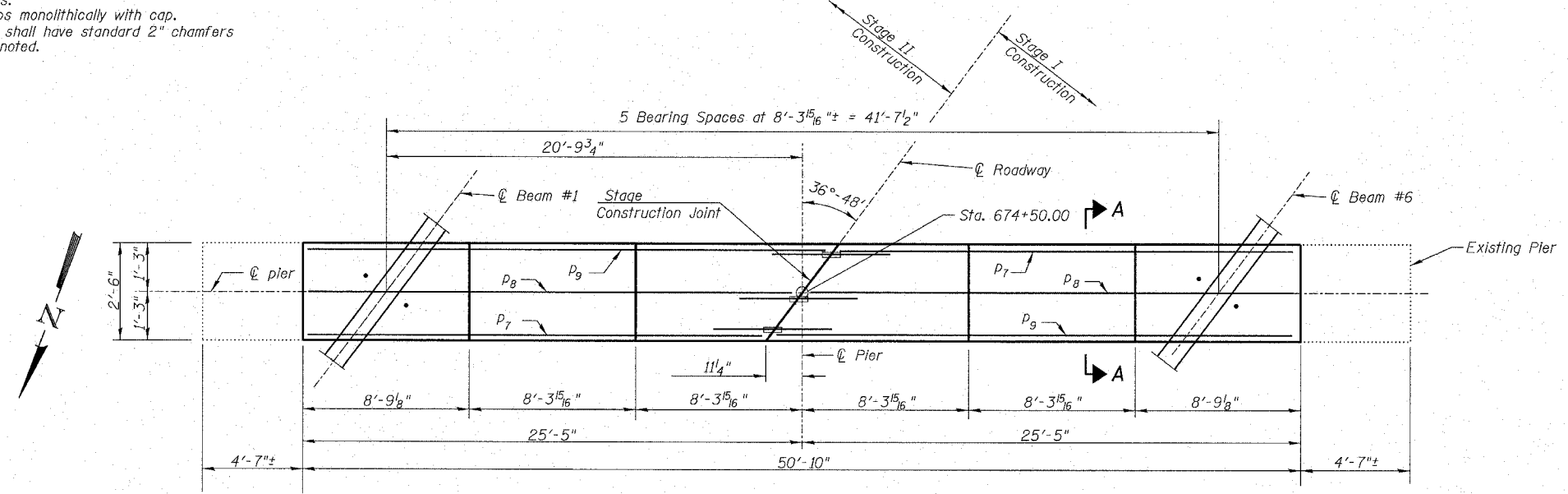


STATE OF ILLINOIS
DEPARTMENT OF TRANSPORTATION

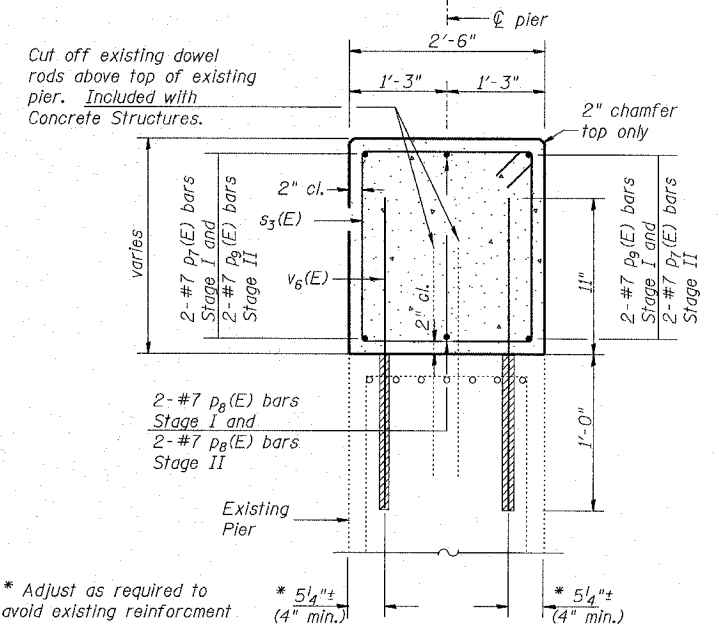
ROUTE NO.	SECTION	COUNTY	TOTAL SHEETS	SHEET NO.
S.B.L. F.A. 646	(102) BR-2	Whiteside	69	38
ILLINOIS FED. AID PROJECT-				
CONTRACT NO. 64427				

SHEET NO. 18
24 SHEETS

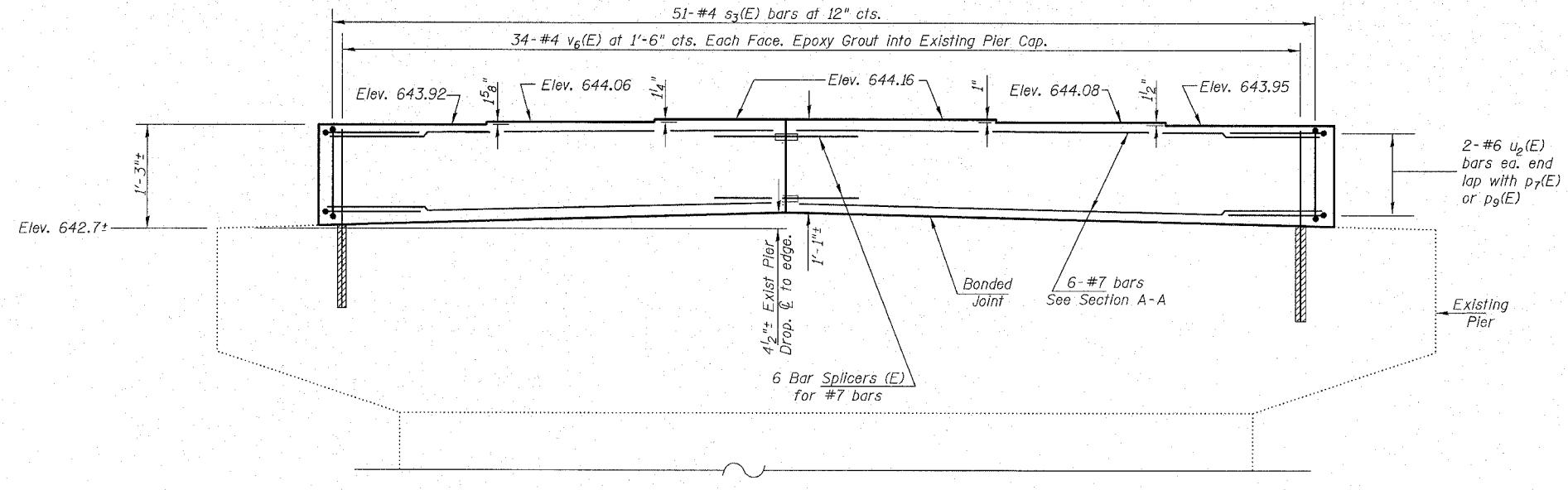
Notes: Space reinforcement in cap to miss anchor bolts.
Pour steps monolithically with cap.
All edges shall have standard 2" chamfers except as noted.



PLAN - PIER #1



SECTION A-A



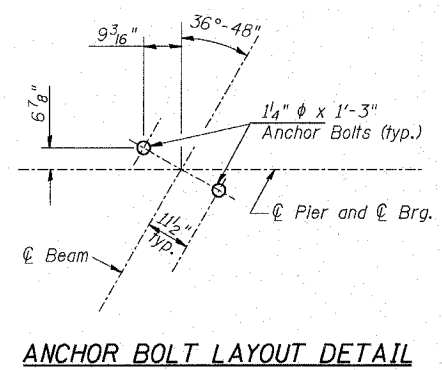
ELEVATION - PIER #1
(Looking South)

PIER #1
BILL OF MATERIAL

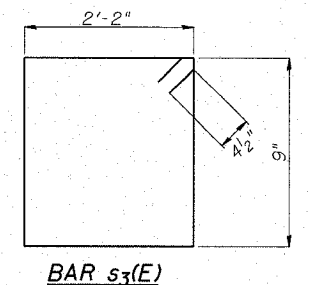
Bar	No.	Size	Length	Shape	
p7(E)	4	#7	24'-2"	—	
p8(E)	4	#7	25'-1"	—	
p9(E)	4	#7	26'-0"	—	
s3(E)	51	#4	6'-7"	□	
u2(E)	4	#6	8'-2"	—	
v6(E)	68	#4	1'-11"	—	
Concrete Structures				Cu. Yd.	5.5
Reinforcement Bars, Epoxy Coated				Pound	980

Notes:
1. Reinforcement bars designated (E) shall be epoxy coated.
2. For details of Bar Splicers, see sheet 21 of 25.

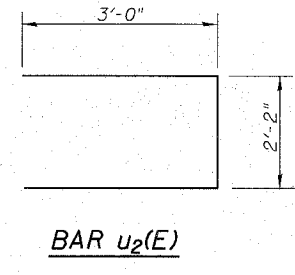
PIER 1
IL RTE 40 OVER GREEN RIVER
F.A.P. 646 SECTION (102)BR-2
WHITESIDE COUNTY
STATION 674+77.63
S.N. 098-0018



ANCHOR BOLT LAYOUT DETAIL



BAR s3(E)



BAR u2(E)

Notes:
v6(E) bars shall be epoxy grouted into existing pier cap in accordance with Section 584 of the Standard Specifications.
In accordance with Section 584.04, epoxy grouting shall not be paid for separately, but shall be included in the cost of Concrete Structures.

R:\Projects\0136\0136-111 green.ph \1\Bridg P\ansea\18 PIER 1 DETAILS.dgn

10/01/04 AM
8/9/2005

DESIGNED	DDB		FILE NUMBER	136.111
CHECKED	JFJ		DATE	Aug. 2005
DRAWN	JDB			
CHECKED	DDB			