

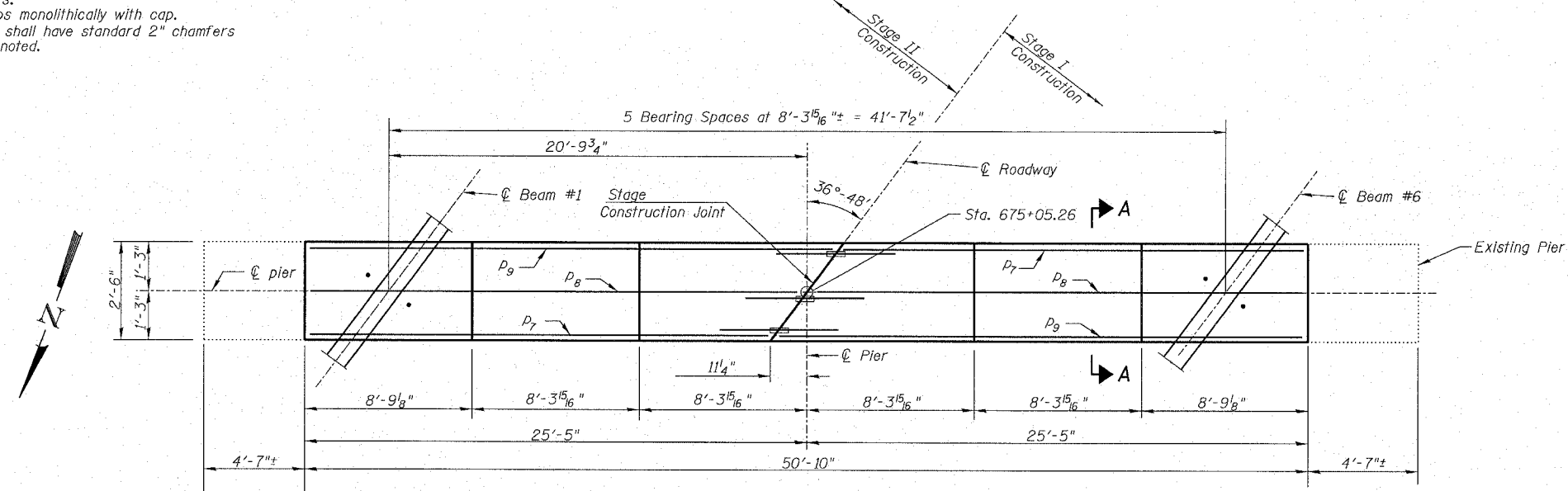
STATE OF ILLINOIS
DEPARTMENT OF TRANSPORTATION

ROUTE NO.	SECTION	COUNTY	TOTAL SHEETS	SHEET NO.
S. B. I. F. A. 646	(102) BR-2	Whiteside	69	39
ILLINOIS FED. AID PROJECT-				

SHEET NO. 19
25 SHEETS

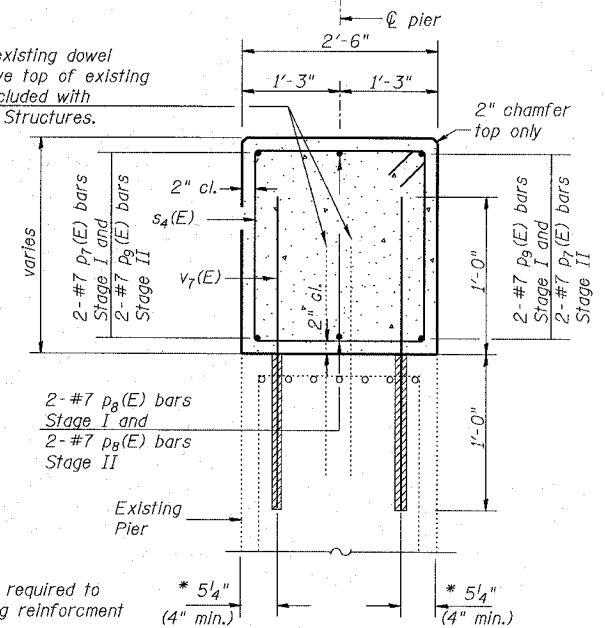
CONTRACT NO. 64427

Notes: Space reinforcement in cap to miss anchor bolts.
Four steps monolithically with cap.
All edges shall have standard 2" chamfers except as noted.



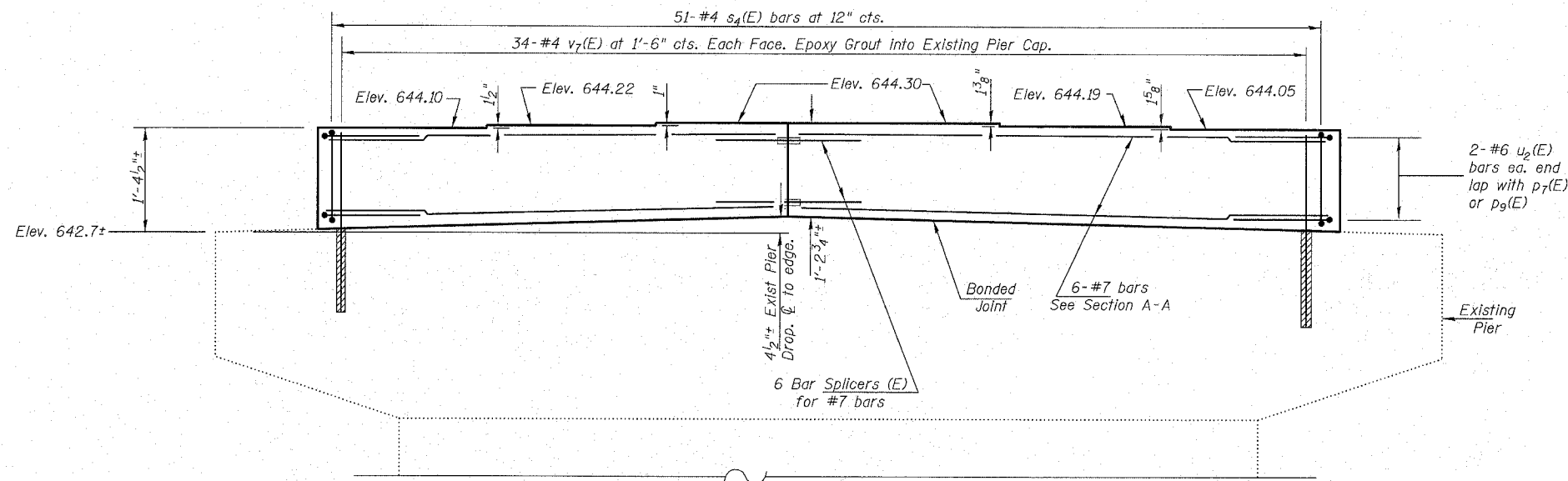
PLAN - PIER #2

Cut off existing dowel rods above top of existing pier. Included with Concrete Structures.



SECTION A-A

* Adjust as required to avoid existing reinforcement



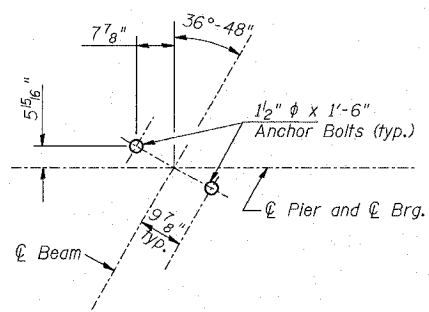
ELEVATION - PIER #2
(Looking South)

PIER #2
BILL OF MATERIAL

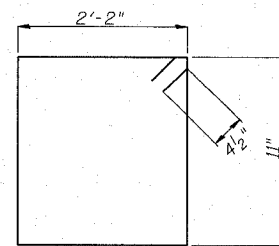
Bar	No.	Size	Length	Shape	
p ₇ (E)	4	#7	24'-2"	—	
p ₈ (E)	4	#7	25'-1"	—	
p ₉ (E)	4	#7	26'-0"	—	
s ₄ (E)	51	#4	6'-11"	⊠	
u ₂ (E)	4	#6	8'-2"	—	
v ₇ (E)	68	#4	2'-0"	—	
Concrete Structures				Cu. Yd.	5.9
Reinforcement Bars, Epoxy Coated				Pound	990

Notes:
1. Reinforcement bars designated (E) shall be epoxy coated.
2. For details of Bar Splicers, see sheet 21 of 25.

PIER 2
IL RTE 40 OVER GREEN RIVER
F.A.P. 646 SECTION (102)BR-2
WHITESIDE COUNTY
STATION 674+77.63
S.N. 098-0018



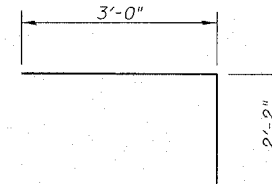
ANCHOR BOLT LAYOUT DETAIL



BAR s₄(E)

Notes:
v₇(E) bars shall be epoxy grouted into existing pier cap in accordance with Section 584 of the Standard Specifications.

In accordance with Section 584.04, epoxy grouting shall not be paid for separately, but shall be included in the cost of Concrete Structures.



BAR u₂(E)

R:\Projects\0136\0136-111.green.ph\1\Brldge Plansef\19_PIER 2 DETAIL S.dgn

10-02-04 AM

8/9/2005

DESIGNED	DDB	FILE NUMBER	136.111
CHECKED	JFJ	DATE	Aug. 2005
DRAWN	JDB	RANDOLPH & ASSOCIATES, INC.	
CHECKED	DDB	CONSULTING ENGINEERS & LAND SURVEYORS	