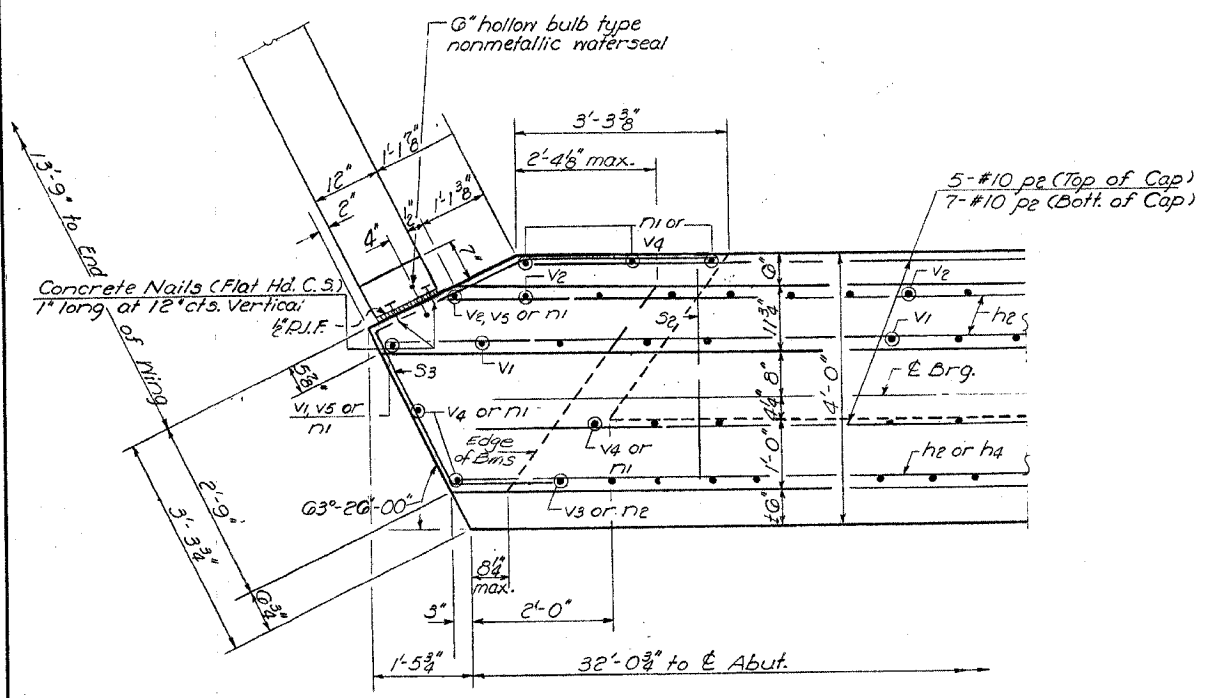
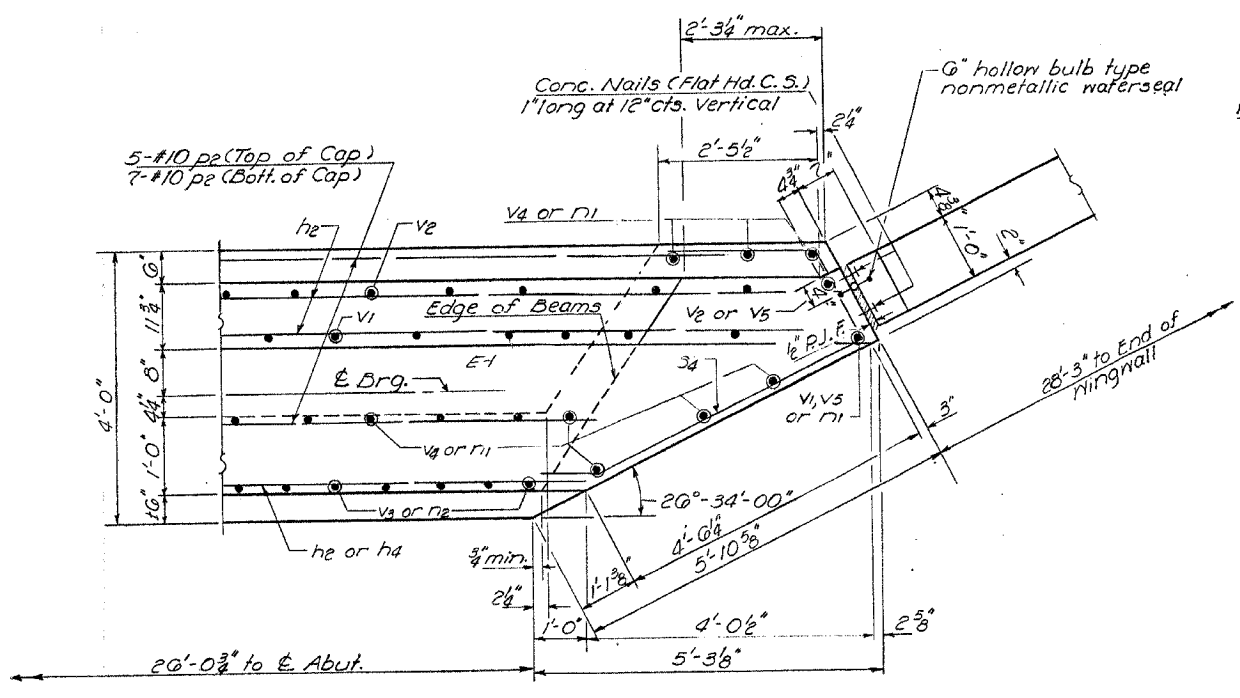


STATE OF ILLINOIS
DEPARTMENT OF PUBLIC WORKS & BUILDINGS
DIVISION OF HIGHWAYS

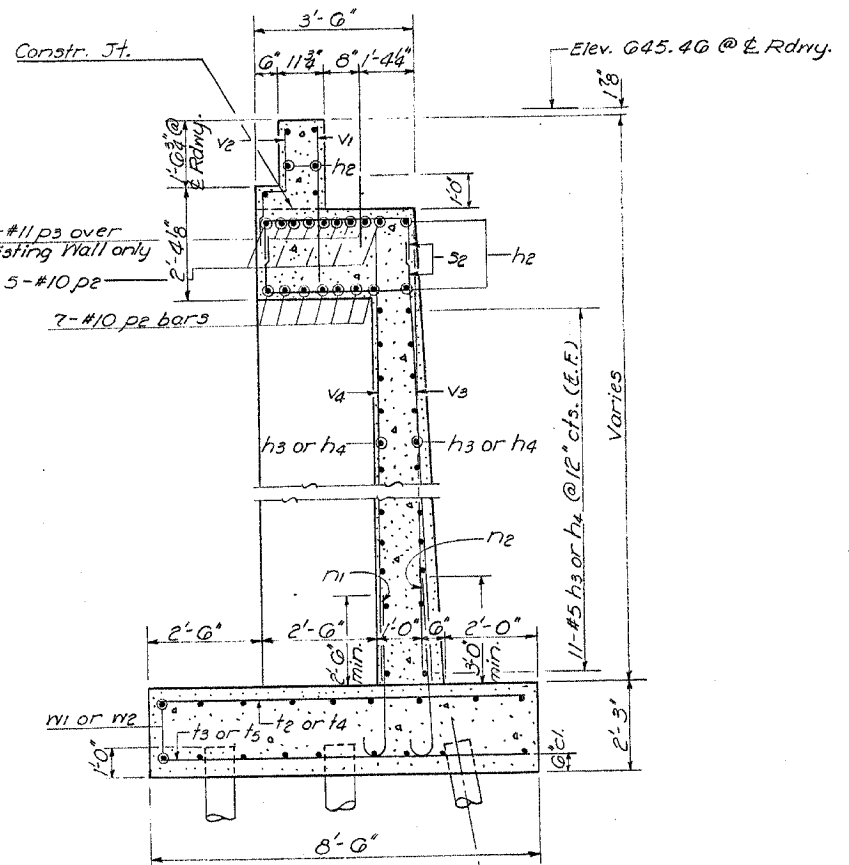
ROUTE NO.	SEC.	COUNTY	TOTAL SHEETS	SHEET NO.	SHEET NO.
F.A.P. 646	(102)BR-2	WHITESIDE	69	51	
CONTRACT #64427					



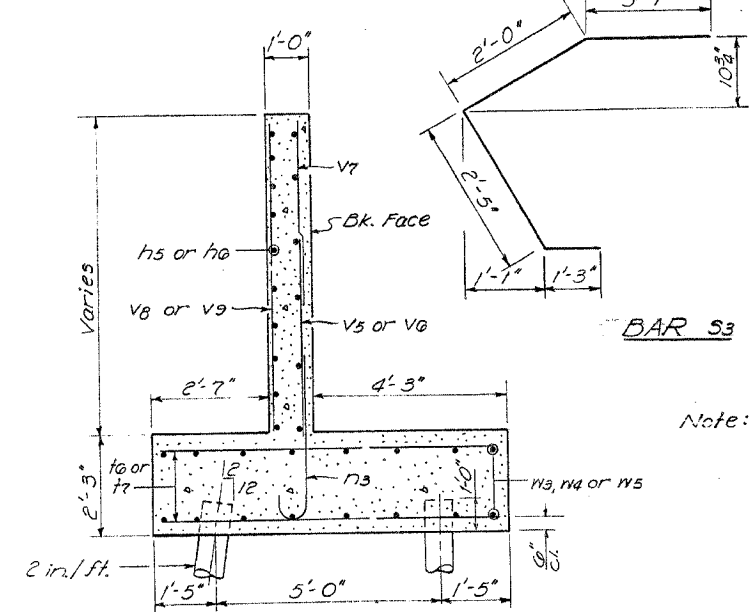
DETAIL 'B'



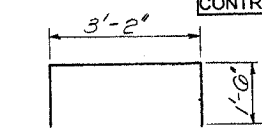
DETAIL 'A'



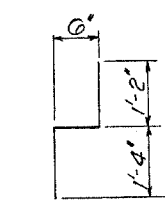
SECTION A-A



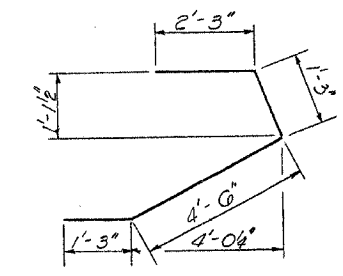
SEC. THRU WINGWALL



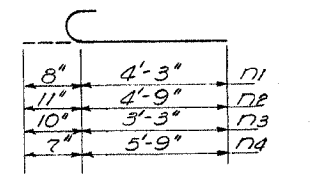
BAR 32



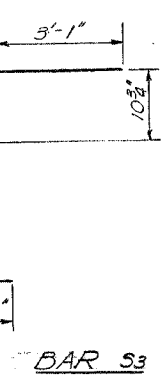
BAR V2



BARS 5



BARS n1, n2, n3 & n4



BAR S3

BILL OF MATERIAL

Bar	No.	Size	Length	Shape
h2	32	#4	33'-0"	—
h3	44	#5	14'-5"	—
h4	44	#5	12'-3"	—
h5	32	#4	28'-0"	—
h6	32	#4	13'-0"	—
n1	80	#6	4'-11"	C
n2	70	#8	5'-8"	C
n3	92	#7	4'-1"	C
n4	92	#5	6'-4"	C
p2	24	#10	59'-0"	—
p3	16	#11	15'-0"	—
s2	224	#5	6'-2"	□
s3	20	#5	8'-9"	<
s4	20	#5	9'-3"	>
t2	38	#7	9'-3"	—
t3	20	#5	9'-3"	—
t4	19	#6	6'-9"	—
t5	13	#5	6'-9"	—
t6	150	#6	7'-7"	—
t7	44	#6	5'-9"	—
v1	130	#5	3'-0"	—
v2	130	#5	3'-0"	—
v3	80	#8	12'-3"	—
v4	70	#6	12'-3"	—
v5	8	#6	14'-2"	—
v6	92	#5	7'-0"	—
v7	60	#4	7'-9"	—
v8	12	#4	14'-3"	—
v9	12	#4	11'-3"	—
w1	30	#5	14'-9"	—
w2	24	#5	13'-0"	—
w3	32	#5	17'-9"	—
w4	8	#5	22'-3"	—
w5	24	#5	33'-0"	—
Class X Concrete			Cu.Yds.	200.0
Reinforcement Bars			Lbs.	27570
Expansion Bolts (3/4" dia)			Each	210
Untreated Piles (up to 30)			Lin. Ft.	1140
Untreated Piles (301 to 45)			Lin. Ft.	1295
Test Piles (Timber)			Ea.	1
Concrete Removal			Cu.Yds	21

Note: Work this sheet with Sheet #7

DESIGNED Stanley Shum Tomoda
CHECKED R. W. Mathur
DRAWN jacobson
CHECKED R. W. Mathur

EXAMINED [Signature]
PASSED H. Baumann
APPROVED Richard H. Hollerman

MAY 13 1970

ABUTMENT DETAILS
S.B.I.R.T. 88 SEC. 102BR
WHITESIDE COUNTY
STA. 674 + 78