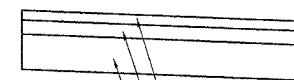


F.A.R. RTE.	SECTION	COUNTY	TOTAL SHEETS	SHEET NO.
573	116R-4	DEKALB	416	25
STA.		TO STA.		
FED. ROAD DIST. NO.		ILLINOIS FED. AID PROJECT		

STAGING TYPICAL SECTIONS

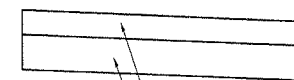
TEMPORARY PAVEMENT & SUB-BASE DETAIL

FLEXIBLE PAVEMENT OPTION



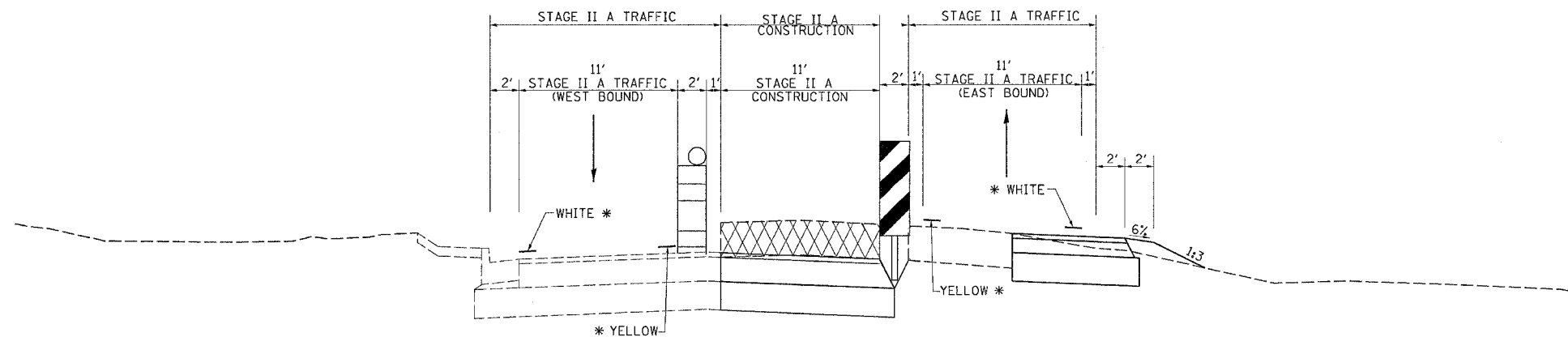
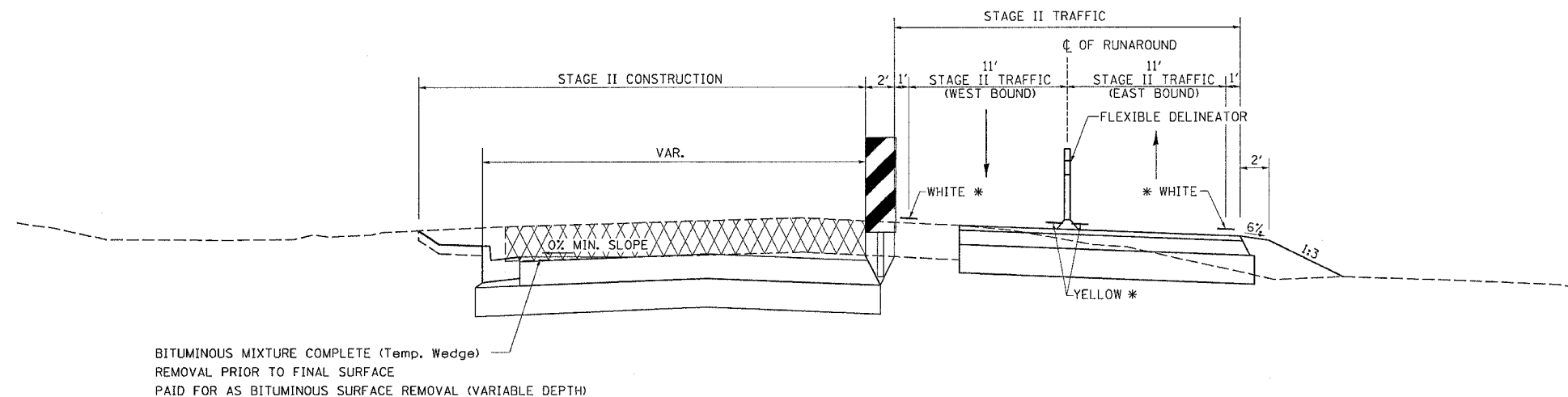
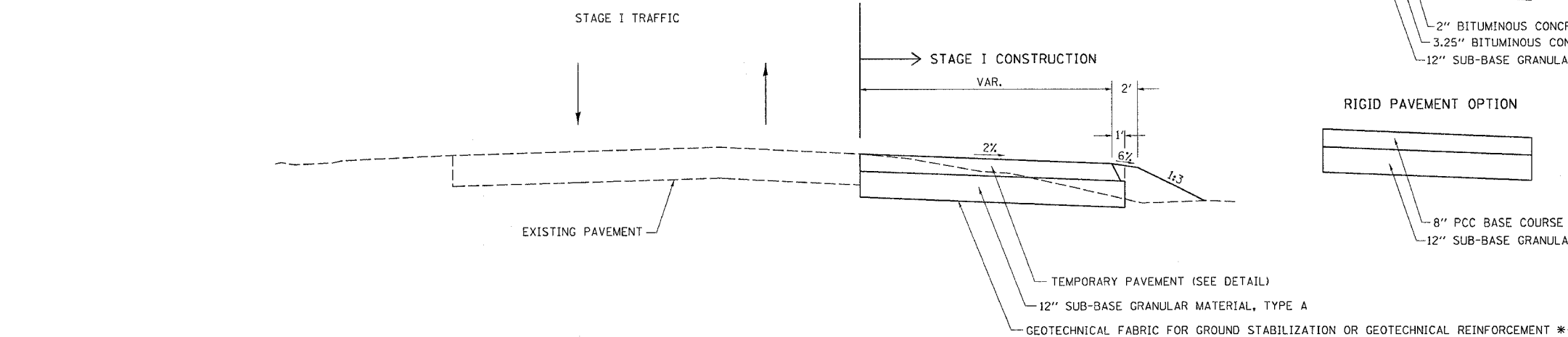
- 2" BITUMINOUS CONCRETE SURFACE COURSE, SUPERPAVE, MIX D, N70
- 3.25" BITUMINOUS CONCRETE BINDER COURSE, SUPERPAVE, IL 19.0, N70
- 12" SUB-BASE GRANULAR MATERIAL, TYPE A

RIGID PAVEMENT OPTION



- 8" PCC BASE COURSE
- 12" SUB-BASE GRANULAR MATERIAL, TYPE A

RUNAROUND CONSTRUCTION



- * ALL PAVEMENT MARKING TAPE IS TYPE III WITH COLOR OF TAPE SHOWN ON TYPICALS SEE SCHEDULE FOR PAINT PAVEMENT MARKING LOCATIONS
- ** SEE SCHEDULE FOR LOCATIONS

FILE NAME = #FILES
 LEVELS = #LEVELS
 SCALE = #SCALE
 PLOT DATE = #DATE
 OPERATOR = #OPERATOR
 REF = #REF
 REF = #REF