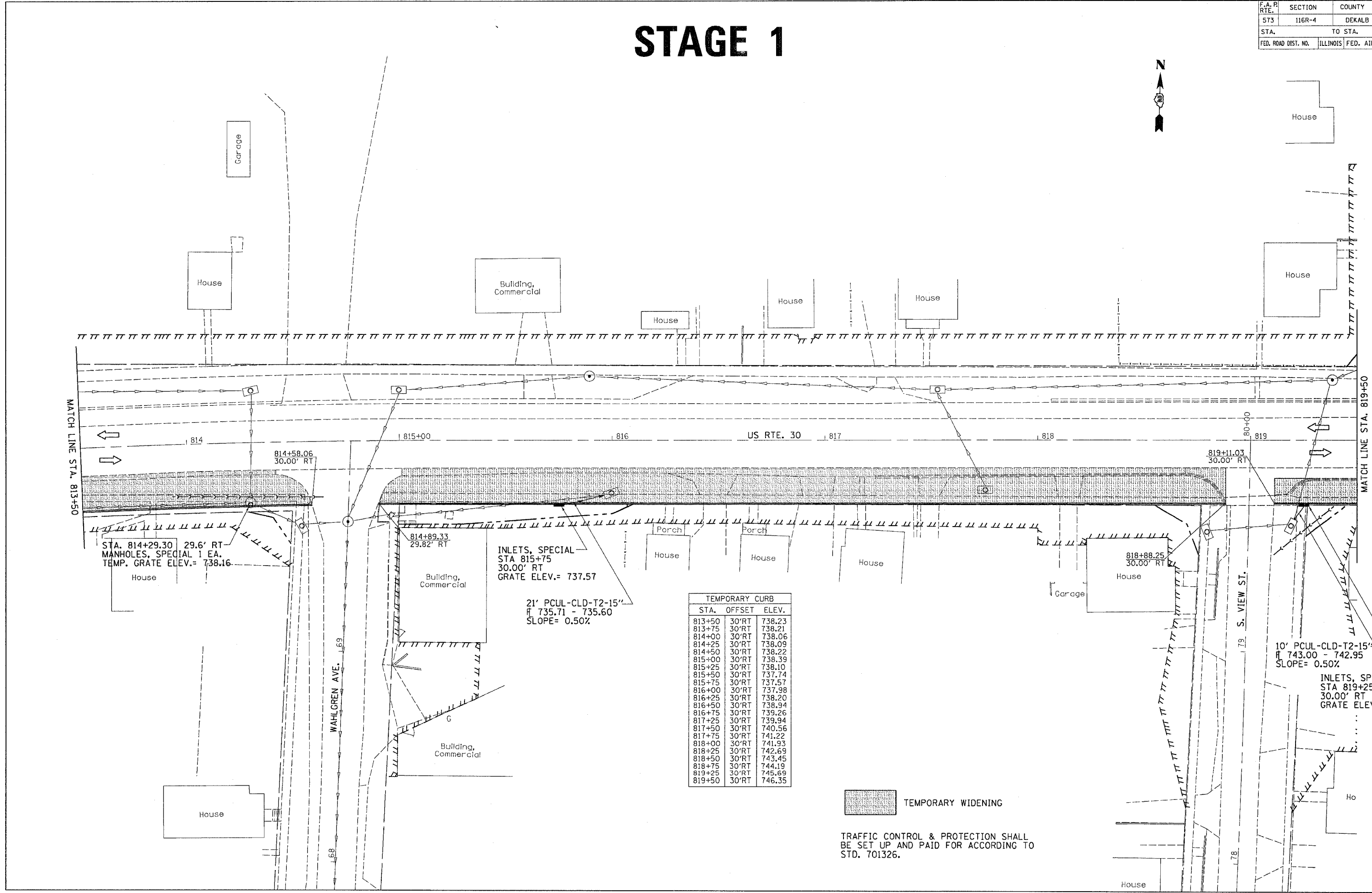


F.A. P. RTE.	SECTION	COUNTY	TOTAL SHEETS	SHEET NO.
573	116R-4	DEKALB	416	181
STA.		TO STA.		
FED. ROAD DIST. NO.		ILLINOIS FED. AID PROJECT		

STAGE 1



INLETS, SPECIAL
 STA 815+75
 30.00' RT
 GRATE ELEV.= 737.57

21' PCUL-CLD-T2-15"
 R 735.71 - 735.60
 SLOPE= 0.50%

TEMPORARY CURB		
STA.	OFFSET	ELEV.
813+50	30'RT	738.23
813+75	30'RT	738.21
814+00	30'RT	738.06
814+25	30'RT	738.09
814+50	30'RT	738.22
815+00	30'RT	738.39
815+25	30'RT	738.10
815+50	30'RT	737.74
815+75	30'RT	737.57
816+00	30'RT	737.98
816+25	30'RT	738.20
816+50	30'RT	738.94
816+75	30'RT	739.26
817+25	30'RT	739.94
817+50	30'RT	740.56
817+75	30'RT	741.22
818+00	30'RT	741.93
818+25	30'RT	742.69
818+50	30'RT	743.45
818+75	30'RT	744.19
819+25	30'RT	745.69
819+50	30'RT	746.35

10' PCUL-CLD-T2-15"
 R 743.00 - 742.95
 SLOPE= 0.50%

INLETS, SPECIAL
 STA 819+25
 30.00' RT
 GRATE ELEV = 745.69

TEMPORARY WIDENING

TRAFFIC CONTROL & PROTECTION SHALL
 BE SET UP AND PAID FOR ACCORDING TO
 STD. 701326.

FILE NAME = ATILES
 LEVELS = BLEVELS
 PLOT SCALE = 4PLOTSCALES
 PLOT DATE = Fri Sep 02 07:36:48 2005
 DRAFTER = JordanH
 REF REF REF