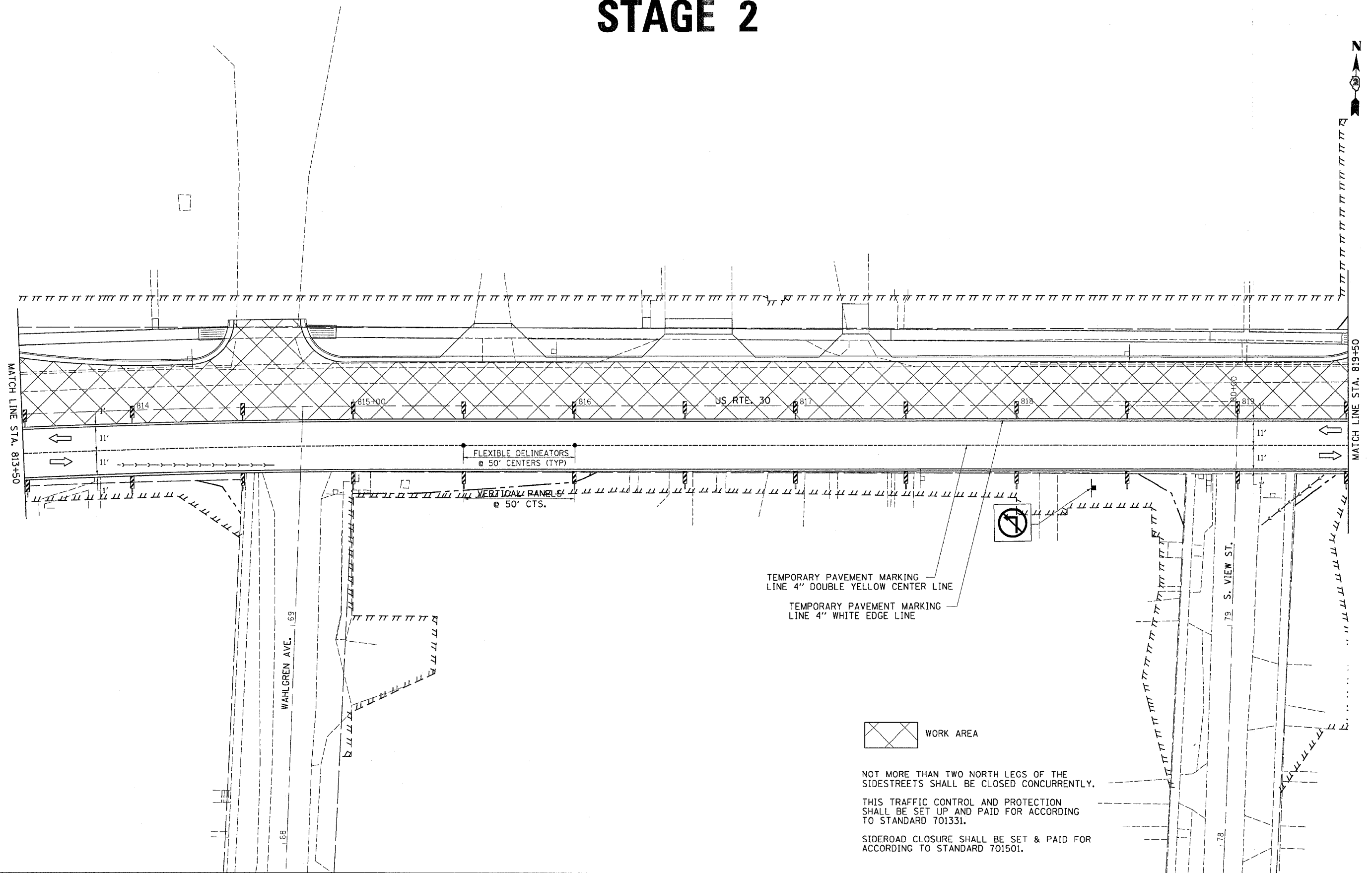


F.A. P. RTE.	SECTION	COUNTY	TOTAL SHEETS	SHEET NO.
573	116R-4	DEKALB	416	189
STA.		TO STA.		
FED. ROAD DIST. NO.		ILLINOIS FED. AID PROJECT		

# STAGE 2



FILE NAME : #ETL#  
 LEVELS : #LEVELS#  
 PLOT SCALE : #PLOTSCALE#  
 PLOT DATE : Fri Sep 02 07:38:47 2005  
 OPERATOR : JordanW  
 REF :  
 REF :

 WORK AREA

NOT MORE THAN TWO NORTH LEGS OF THE SIDESTREETS SHALL BE CLOSED CONCURRENTLY.

THIS TRAFFIC CONTROL AND PROTECTION SHALL BE SET UP AND PAID FOR ACCORDING TO STANDARD 701331.

SIDEROAD CLOSURE SHALL BE SET & PAID FOR ACCORDING TO STANDARD 701501.