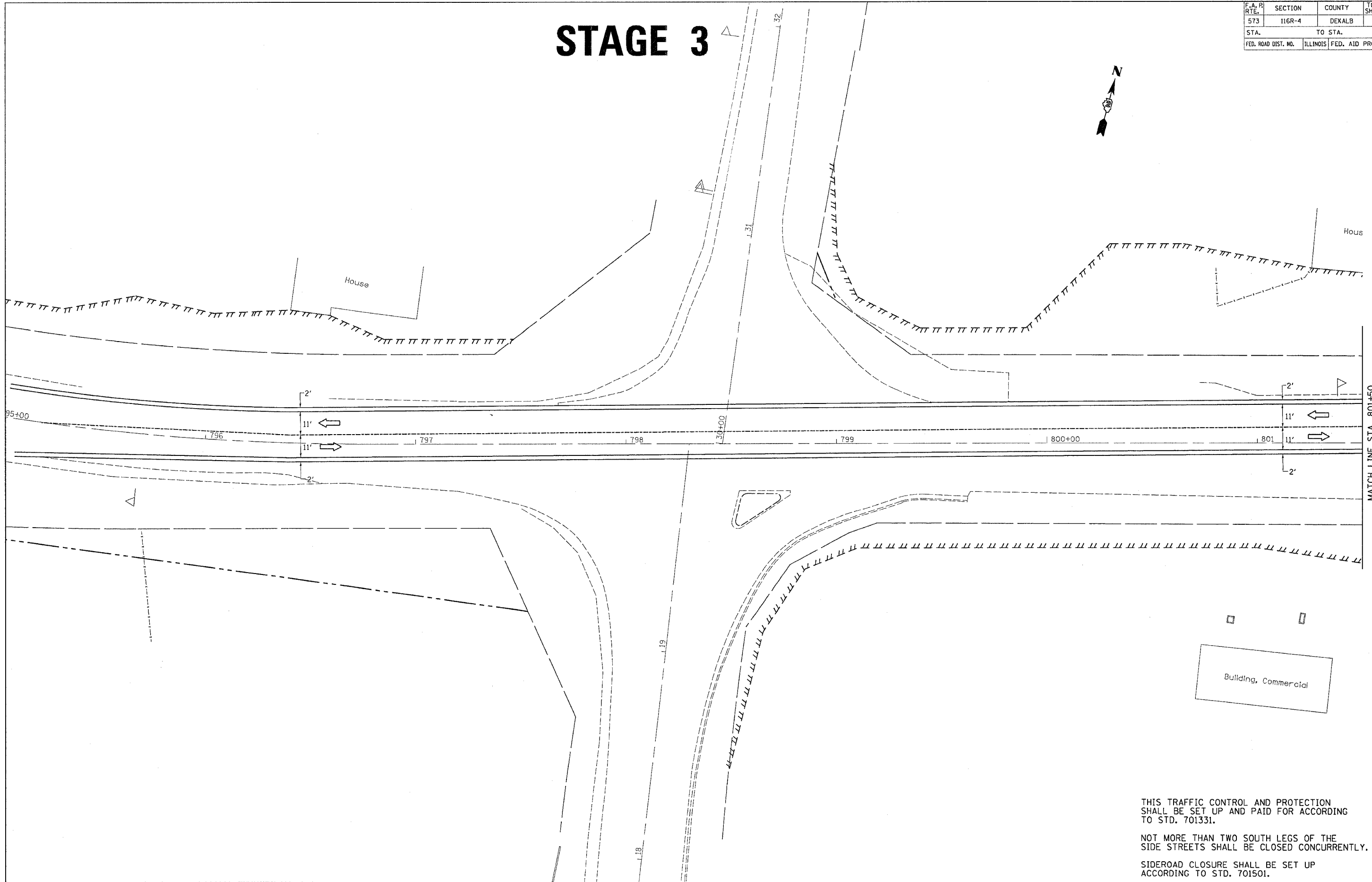


F.A. P. RTE.	SECTION	COUNTY	TOTAL SHEETS	SHEET NO.
573	116R-4	DEKALB	416	196
STA.		TO STA.		
FED. ROAD DIST. NO.		ILLINOIS	FED. AID PROJECT	

STAGE 3



THIS TRAFFIC CONTROL AND PROTECTION SHALL BE SET UP AND PAID FOR ACCORDING TO STD. 701331.

NOT MORE THAN TWO SOUTH LEGS OF THE SIDE STREETS SHALL BE CLOSED CONCURRENTLY.

SIDEROAD CLOSURE SHALL BE SET UP ACCORDING TO STD. 701501.

FILE NAME = #FILE#
 LEVELS = #LEVELS#
 PLOT SCALE = #PLOTSCALE#
 PLOT DATE = Fri Sep 02 07:36:51 2005
 OPERATOR = jordanhd
 REF REF