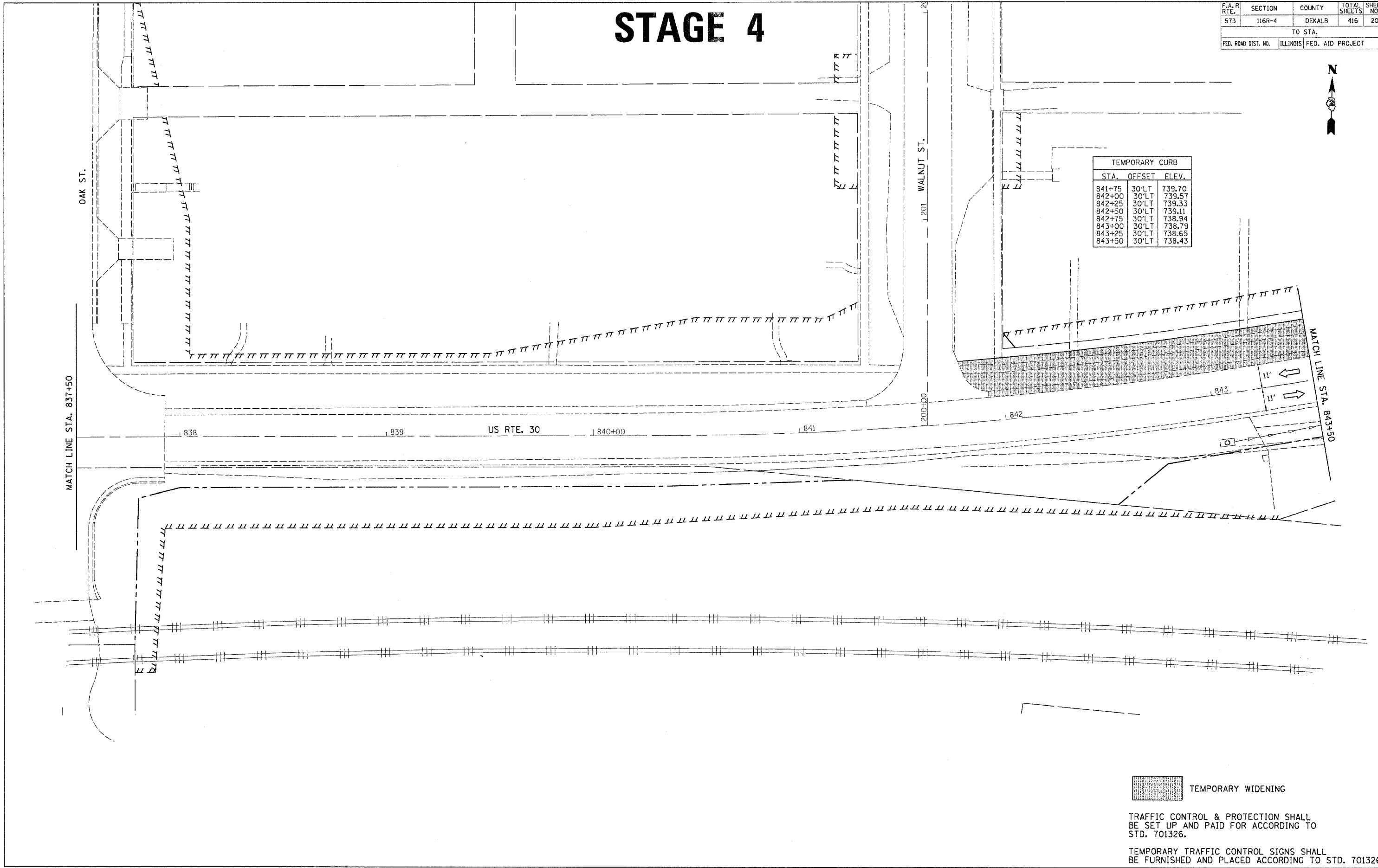


F.A. P. RTE.	SECTION	COUNTY	TOTAL SHEETS	SHEET NO.
573	116R-4	DEKALB	416	206
TO STA.				
FED. ROAD DIST. NO.	ILLINOIS	FED. AID PROJECT		

STAGE 4



TEMPORARY CURB		
STA.	OFFSET	ELEV.
841+75	30'LT	739.70
842+00	30'LT	739.57
842+25	30'LT	739.33
842+50	30'LT	739.11
842+75	30'LT	738.94
843+00	30'LT	738.79
843+25	30'LT	738.65
843+50	30'LT	738.43



TEMPORARY WIDENING

TRAFFIC CONTROL & PROTECTION SHALL BE SET UP AND PAID FOR ACCORDING TO STD. 701326.

TEMPORARY TRAFFIC CONTROL SIGNS SHALL BE FURNISHED AND PLACED ACCORDING TO STD. 701326

FILE NAME = #FILES
 LEVELS = #LEVELS
 PLOT SCALE = #PLOTS/SCALE
 PLOT DATE = Fri Sep 02 07:38:54 2005
 PLOTOR = j...
 REF REF REF