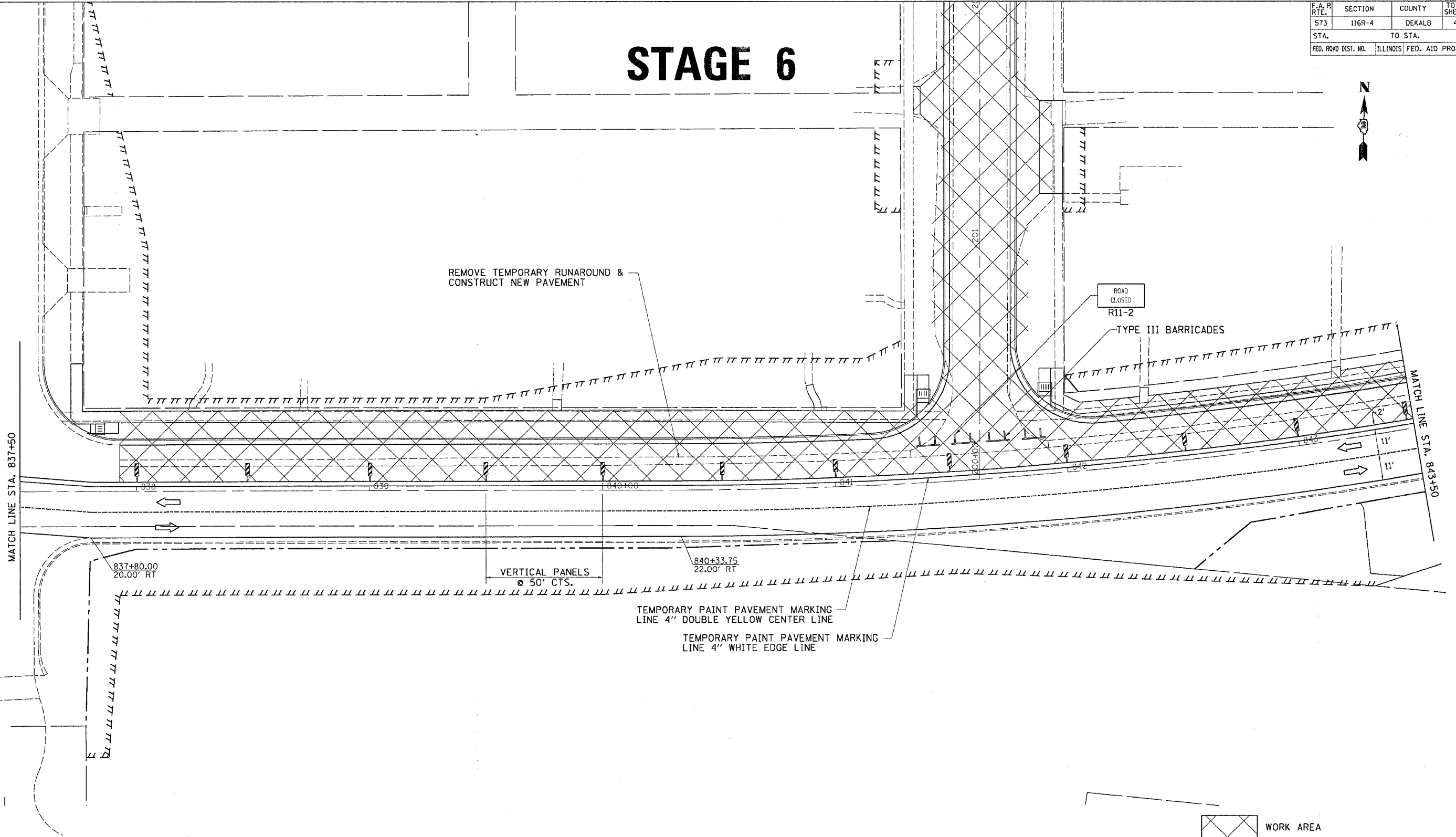


F.A.R. RTE.	SECTION	COUNTY	TOTAL SHEETS	SHEET NO.
573	116R-4	DEKALB	416	222
STA.		TO STA.		
FED. ROAD DIST. NO.	ILLINOIS	FED. AID PROJECT		

STAGE 6



REMOVE TEMPORARY RUNAROUND & CONSTRUCT NEW PAVEMENT

ROAD CLOSED R11-2

TYPE III BARRICADES

MATCH LINE STA. 837+50

MATCH LINE STA. 843+50

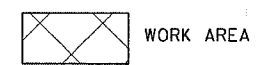
837+80.00
20.00' RT

VERTICAL PANELS
@ 50' CTS.

840+33.75
22.00' RT

TEMPORARY PAINT PAVEMENT MARKING
LINE 4" DOUBLE YELLOW CENTER LINE

TEMPORARY PAINT PAVEMENT MARKING
LINE 4" WHITE EDGE LINE



TEMPORARY TRAFFIC CONTROL SIGNS SHALL BE FURNISHED AND PLACED ACCORDING TO STD. 701331.

NOT MORE THAN TWO NORTH LEGS OF THE SIDESTREETS SHALL BE CLOSED CONCURRENTLY.

THIS TRAFFIC CONTROL AND PROTECTION SHALL BE SET UP AND PAID FOR ACCORDING TO STANDARD 701331.

SIDEROAD CLOSURE SHALL BE SET ACCORDING TO STANDARD 701501.

FILE NAME = #FILES
 LEVELS = #LEVELS
 PLOT SCALE = #PLOTS/SCALE
 PLOT DATE = Fri Sep 02 07:37:49 2005
 OPERATOR = Jordanhd
 REF REF REF REF