

F.A.S. RTE.	SECTION	COUNTY	TOTAL SHEETS	SHEET NO.
203	9BR-4	ROCK ISLAND	21	1

STATE OF ILLINOIS
DEPARTMENT OF TRANSPORTATION
DIVISION OF HIGHWAYS

**PROPOSED
HIGHWAY PLANS**

FAS ROUTE 203 MOLINE RD.
SECTION 9BR-4
PROJECT ACBHOS-0203(105)
ROCK ISLAND COUNTY
C-92-138-01

D92-089-01



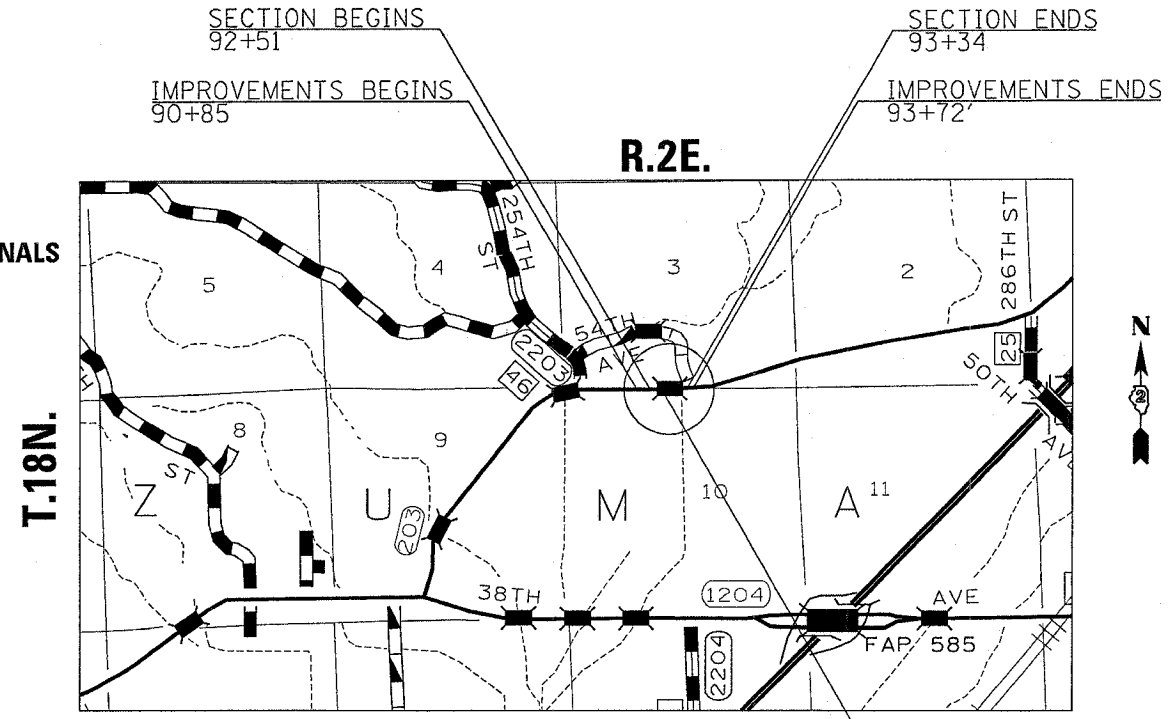
LOCATION OF SECTION INDICATED THUS: -

INDEX OF SHEETS

- 1 COVER SHEET
- 2-3 SUMMARY OF QUANTITIES
- 4 GENERAL NOTES
- 5 TYPICAL SECTIONS & BUTT-JOINT DETAILS
- 6 SCHEDULE OF QUANTITIES
- 7-8 ROADWAY PLAN SHEETS
- 9-10 EROSION DETAILS
- 11 BRIDGE GENERAL PLAN
- 12 BRIDGE GENERAL DATA
- 13 STEEL BRIDGE RAIL SIDE MOUNTED DETAIL
- 14-15 SUPERSTRUCTURE DETAILS
- 16 ABUTMENT DETAIL
- 17 CONCRETE REPAIR DETAIL
- 18 TRAFFIC CONTROL FOR ROAD CLOSURE (40.1)
- 19-21 CROSS SECTIONS

STATE STANDARDS

- 001001 AREAS OF REINFORCEMENT
- 001006 DECIMAL OF AN INCH AND A FOOT
- 280001-02 TEMPORARY EROSION CONTROL SYSTEMS
- 515001-02 NAME PLATE FOR BRIDGES
- 542401 METAL END SECTION FOR PIPE CULVERTS
- 630001-05 STEEL PLATE BEAM GUARDRAIL
- 630301-03 SHOULDER WIDENING FOR TYPE 1 GUARDRAIL TERMINALS
- 631032-01 TRAFFIC BARRIER TERMINAL, TYPE 6A
- 635001 DELINEATORS
- 635006-02 REFLECTOR AND TERMINAL REPLACEMENT
- 635011-01 REFLECTOR MARKER AND MOUNTING DETAILS
- 667101 PERMANENT SURVEY MARKERS
- 780001-01 TYPICAL PAVEMENT MARKINGS
- 781001-02 TYPICAL APPLICATIONS RAISED REFLECTIVE PAVEMENT MARKERS



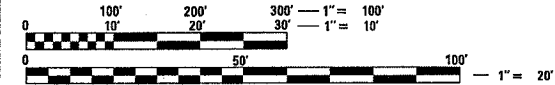
THE PROJECT IS A BRIDGE DECK BEAM REPLACEMENT PROJECT ON A SINGLE SPAN STRUCTURE WITH GUARDRAIL UPDATE AND A ROAD CLOSURE.

GROSS LENGTH OF SECTION = 282.21 FEET = 0.05 MILES
NET LENGTH OF SECTION = 282.21 FEET = 0.05 MILES

PROJECT ENGINEER: ROBERT WAGNER

SENIOR ENGINEER: THOMAS HALLA

PHONE: (815) 284-5993



FULL SIZE PLANS HAVE BEEN PREPARED USING STANDARD ENGINEERING SCALES. REDUCED SIZED PLANS WILL NOT CONFORM TO STANDARD SCALES. IN MAKING MEASUREMENTS ON REDUCED PLANS, THE ABOVE SCALES MAY BE USED.

J.U.L.I.E.
JOINT UTILITY LOCATION INFORMATION FOR EXCAVATION
1-800-892-0123

ROCK ISLAND COUNTY
ZUMA TOWNSHIP, SECTION 3

CONTRACT NO. 64719

STATE OF ILLINOIS
DEPARTMENT OF TRANSPORTATION
DIVISION OF HIGHWAYS

SUBMITTED SEPT 2 2005
Deputy Mounts
DEPUTY DIRECTOR OF HIGHWAYS, REGION ENGINEER

October 14, 2005
Mike Hine
ENGINEER OF DESIGN AND ENVIRONMENT

October 14, 2005
Eric E. Blum
DEPUTY DIRECTOR OF HIGHWAYS, CHIEF ENGINEER

**PRINTED BY THE AUTHORITY
OF THE STATE OF ILLINOIS**