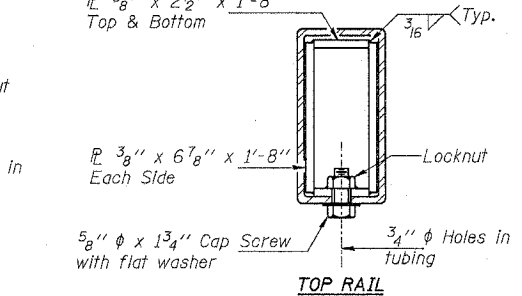


ROUTE NO.	SECTION	COUNTY	SHEET	SHEET NO.
FAS 203	9BR-M	ROCK ISLAND	21	13
FED. ROAD DIST. NO. 7	ILLINOIS	FED. AID PROJECT		

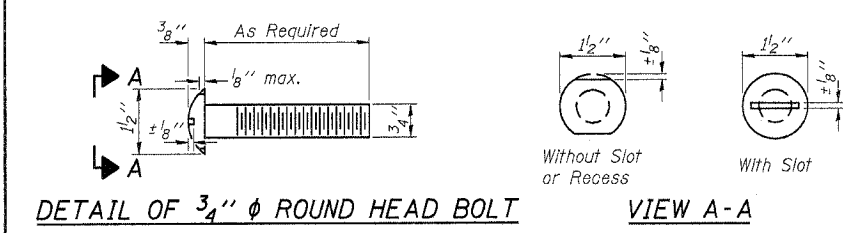
Contract No. 64719



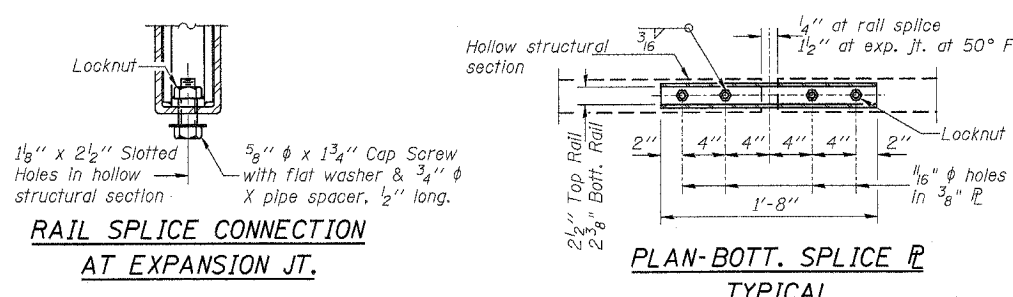
SECTIONS AT RAIL SPLICE

NOTES

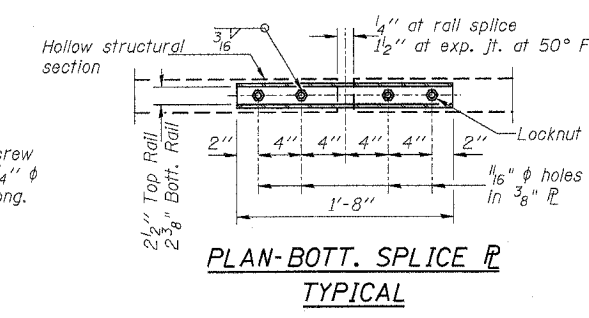
Hollow structural sections shall conform to the requirements of ASTM designation A 500 Grade B Structural Steel Tubing and shall meet the longitudinal CVN requirements of 15 ft-lbs at 0° F. All other steel shapes and plates shall conform to the requirements of AASHTO M 270 Grade 36 except posts and angles shall conform to AASHTO M 270, Grade 50. Bolts, cap screws, and nuts shall conform to the requirements of ASTM designation A 307 except for high strength bolts, nuts and washers noted which shall conform to AASHTO M 164. All bolts, nuts, cap screws, washers and lock washers shall be galvanized according to AASHTO M 232. All posts, railing, rail splices, anchor devices and angles shall be galvanized after shop fabrication according to AASHTO M 111 and ASTM A 385. Galvanized rail shall not be painted. Railing shall be according to Section 509 of the Standard Specifications, except as noted, and will be paid for at the contract unit price per foot for Steel Bridge Rail, Type SM. All field drilled holes shall be coated with an approved zinc rich paint before erection. For multi-span bridges, sufficient 1/4\"/>



DETAIL OF 3/4\"/>

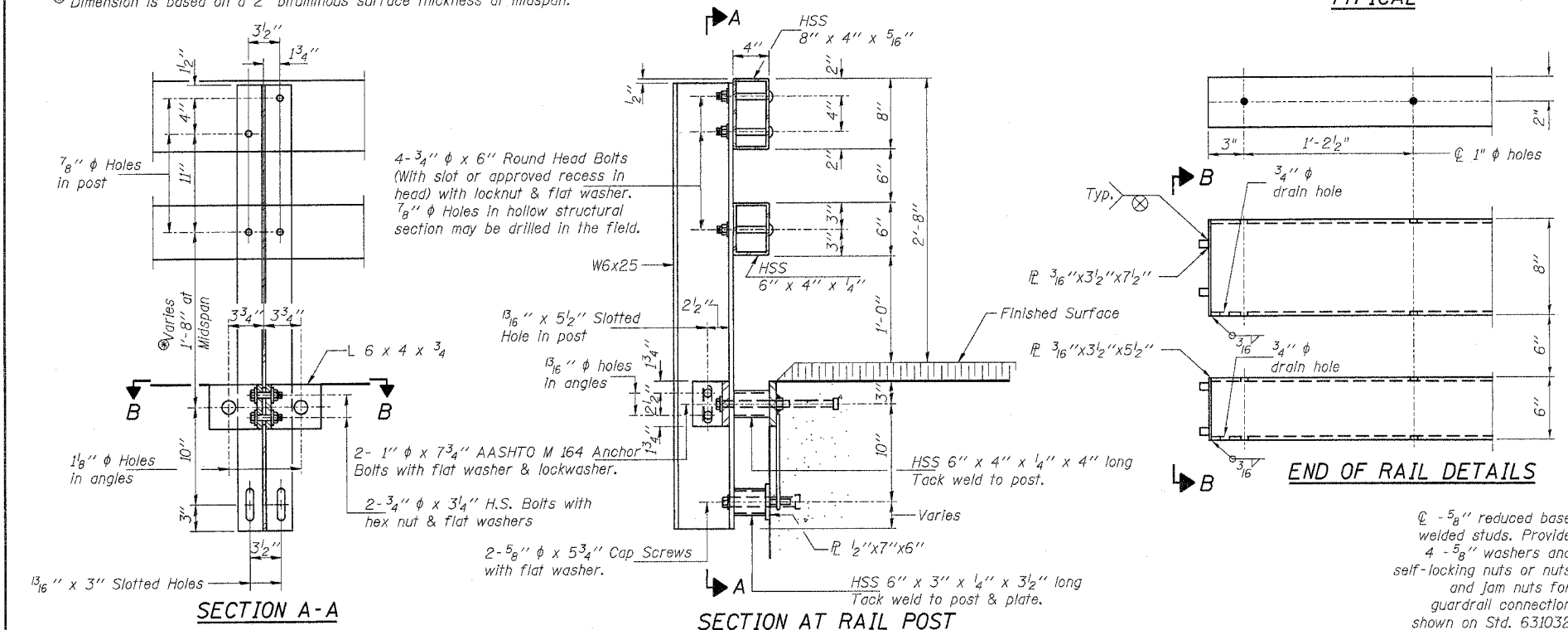


RAIL SPLICE CONNECTION AT EXPANSION JT.



PLAN-BOTT. SPLICE TYPICAL

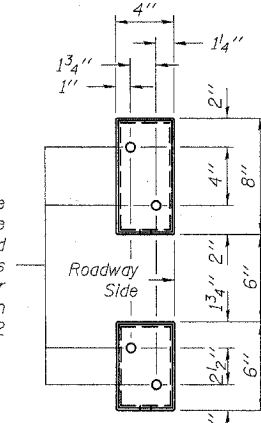
Dimension is based on a 2\"/>



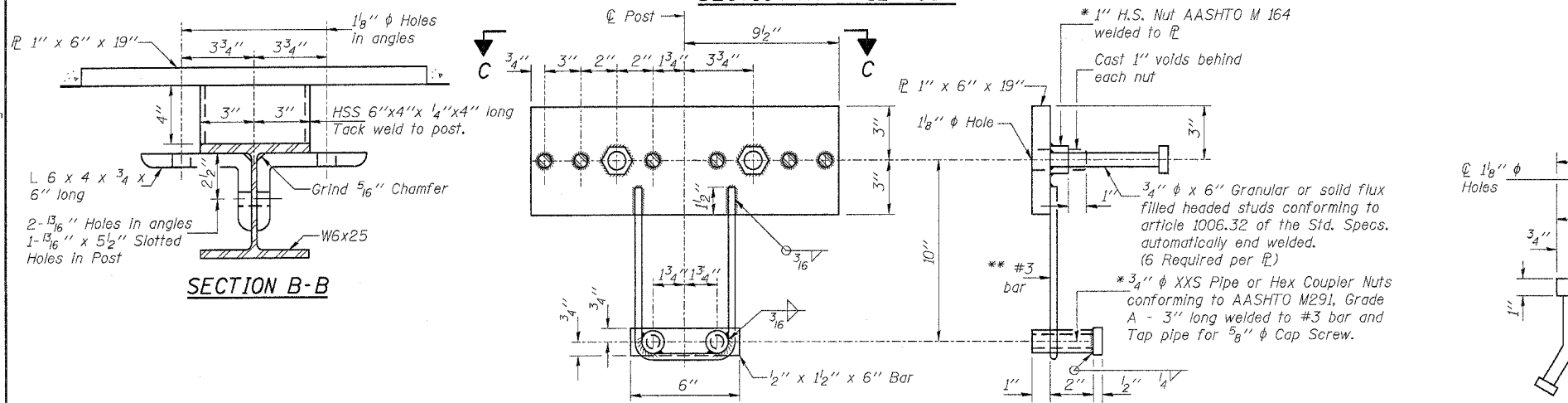
SECTION A-A

SECTION AT RAIL POST

END OF RAIL DETAILS

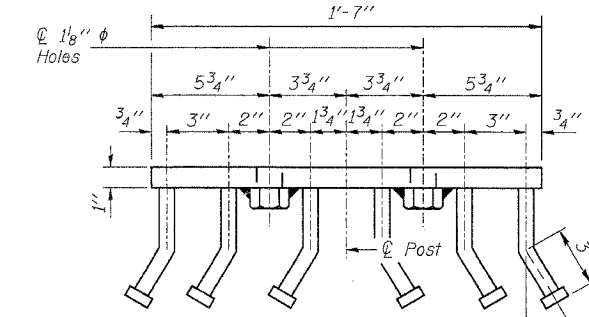


VIEW B-B



ANCHOR DEVICE

\* Threaded areas shall be plugged or blocked off during casting of beam. Galvanized after fabrication.  
 \*\* Whenever the lower insert assemblies interfere with strand locations, the #3 bars shall be cut and adjusted in order to allow raising or lowering of the lower inserts. Maximum adjustment not to exceed 1/2\"/>



VIEW C-C

BILL OF MATERIAL

Item	Unit	Quantity
Steel Bridge Rail, Type SM	Foot	158

ILLINOIS DEPARTMENT OF TRANSPORTATION  
 TYPE SM  
 STEEL BRIDGE RAIL SIDE MOUNTED  
 F.A.S. ROUTE 203-SECTION 9BR-M  
 ROCK ISLAND COUNTY  
 STATION 92+92.75  
 STRUCTURE NO. 081-0034

REVISIONS	
NAME	DATE

LIN ENGINEERING, LTD.  
 200 W. Chestnut  
 1577-483-488  
 Designd By: DLS  
 Date: 07/05

Channah, Illinois 62629  
 FAX: (618) 483-4706  
 Checked By: MTH  
 Drawn By: JMD  
 File: 0810034.DWG

11:04:56 AM  
 8/5/2005  
 ...\\0810034.dgn