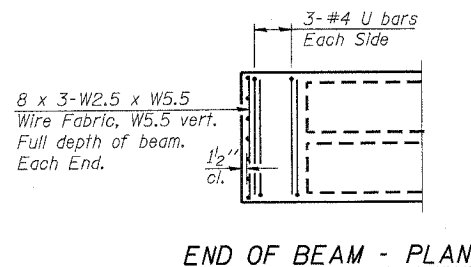


NOTES

- Prestressing steel shall be uncoated high strength, low relaxation 7-wire strand, Grade 270. The nominal diameter shall be 1/2" and the nominal cross-sectional area shall be 0.153 sq. in. Lifting loops shall be 2'-2" φ-270 ksi strands, as shown.
- The 1" φ rods in the transverse tie assembly shall be tightened to a snug fit and the threads set. Pockets that receive transverse tie bar on outside shall be filled with grout after transverse tie assembly is in place.
- Non prestressing steel shall conform to AASHTO M-31 or M 322 Grade 60.
- The bearing seat surfaces shall be adjusted by shimming to assure firm and even bearing. Two 1/8" fabric adjusting shims of the dimensions of the Exterior Bearing Pad shall be provided for each bearing.
- Keyway surfaces shall be cleaned to remove form oil or other bond breaking material prior to shipment of the beams. Cleaning shall be done by sandblasting the keyway areas between top of the beam and the bottom edge of the key.
- Corrosion Inhibitor, as covered in the Special Provisions, shall be used in the concrete for precast prestressed concrete deck beams.
- Required Release Strength, f'cl, shall be 4000 p.s.i.
- See sheet 4 of 7 for location of rail anchors.
- Bridge rail Inserts shall be cast in precast beams.

BILL OF MATERIAL

Precast Prestressed Conc. Deck Bms. (21" Depth)	Sq. Ft.	1410.8
---	---------	--------



LIN ENGINEERING, LTD.
 20 N. Chestnut
 Channahon, Illinois 63229
 (815) 483-4864
 (815) 483-4706
 Designed By: DLS
 Checked By: MTH
 Drawn By: JND
 Date: 07/05
 File: 0820034.dwg

REVISIONS	
NAME	DATE

ILLINOIS DEPARTMENT OF TRANSPORTATION
SUPERSTRUCTURE DETAILS - 2
MOLINE ROAD OVER ZUMA CREEK
F.A.S. ROUTE 203-SECTION 9BR-M
ROCK ISLAND COUNTY
STATION 92+92.75
STRUCTURE NO. 081-0034

...0810034.dwg

11:32:49 AM

8/5/2005