

F.A.S. RTE.	SECTION	COUNTY	TOTAL SHEETS	SHEET NO.
203	9BR-4	ROCK ISLAND	21	1

STATE OF ILLINOIS  
DEPARTMENT OF TRANSPORTATION  
DIVISION OF HIGHWAYS

**PROPOSED  
HIGHWAY PLANS**

FAS ROUTE 203 MOLINE RD.  
SECTION 9BR-4  
PROJECT ACBHOS-0203(105)  
ROCK ISLAND COUNTY  
C-92-138-01

D92-089-01



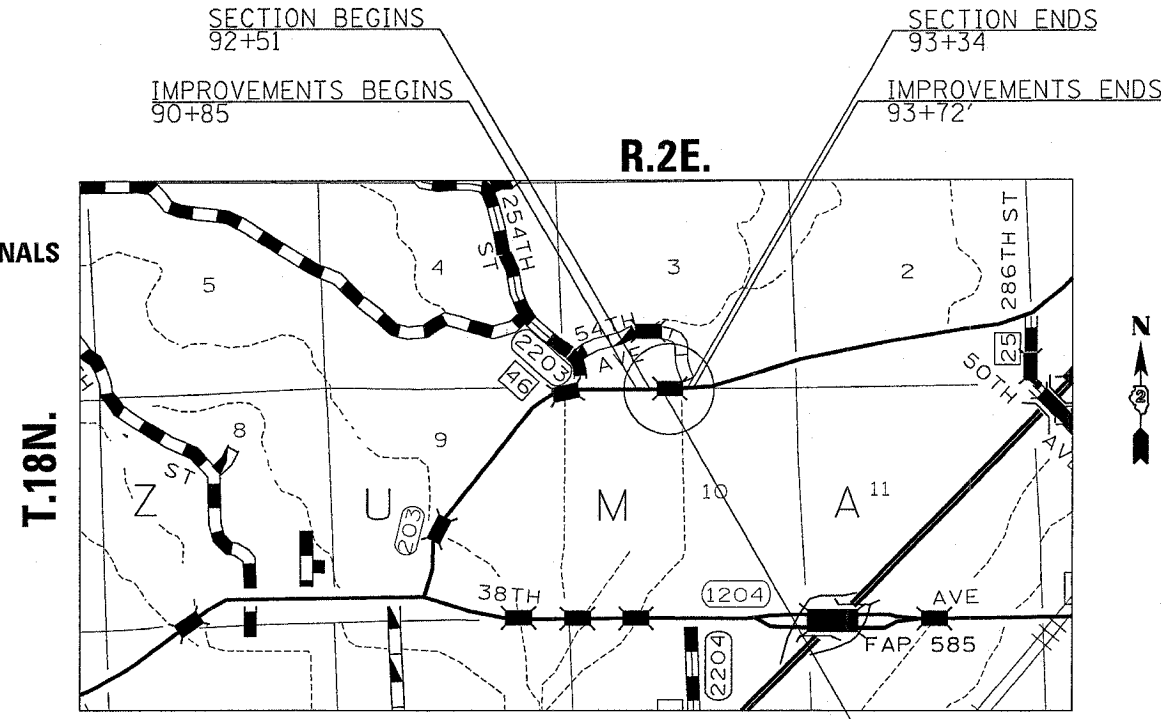
LOCATION OF SECTION INDICATED THUS: -

**INDEX OF SHEETS**

- 1 COVER SHEET
- 2-3 SUMMARY OF QUANTITIES
- 4 GENERAL NOTES
- 5 TYPICAL SECTIONS & BUTT-JOINT DETAILS
- 6 SCHEDULE OF QUANTITIES
- 7-8 ROADWAY PLAN SHEETS
- 9-10 EROSION DETAILS
- 11 BRIDGE GENERAL PLAN
- 12 BRIDGE GENERAL DATA
- 13 STEEL BRIDGE RAIL SIDE MOUNTED DETAIL
- 14-15 SUPERSTRUCTURE DETAILS
- 16 ABUTMENT DETAIL
- 17 CONCRETE REPAIR DETAIL
- 18 TRAFFIC CONTROL FOR ROAD CLOSURE (40.1)
- 19-21 CROSS SECTIONS

**STATE STANDARDS**

- 001001 AREAS OF REINFORCEMENT
- 001006 DECIMAL OF AN INCH AND A FOOT
- 280001-02 TEMPORARY EROSION CONTROL SYSTEMS
- 515001-02 NAME PLATE FOR BRIDGES
- 542401 METAL END SECTION FOR PIPE CULVERTS
- 630001-05 STEEL PLATE BEAM GUARDRAIL
- 630301-03 SHOULDER WIDENING FOR TYPE 1 GUARDRAIL TERMINALS
- 631032-01 TRAFFIC BARRIER TERMINAL, TYPE 6A
- 635001 DELINEATORS
- 635006-02 REFLECTOR AND TERMINAL REPLACEMENT
- 635011-01 REFLECTOR MARKER AND MOUNTING DETAILS
- 667101 PERMANENT SURVEY MARKERS
- 780001-01 TYPICAL PAVEMENT MARKINGS
- 781001-02 TYPICAL APPLICATIONS RAISED REFLECTIVE PAVEMENT MARKERS



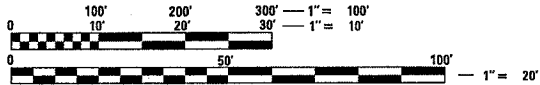
THE PROJECT IS A BRIDGE DECK BEAM REPLACEMENT PROJECT ON A SINGLE SPAN STRUCTURE WITH GUARDRAIL UPDATE AND A ROAD CLOSURE.

**GROSS LENGTH OF SECTION = 282.21 FEET = 0.05 MILES**  
**NET LENGTH OF SECTION = 282.21 FEET = 0.05 MILES**

PROJECT ENGINEER: ROBERT WAGNER

SENIOR ENGINEER: THOMAS HALLA

PHONE: (815) 284-5993



FULL SIZE PLANS HAVE BEEN PREPARED USING STANDARD ENGINEERING SCALES. REDUCED SIZED PLANS WILL NOT CONFORM TO STANDARD SCALES. IN MAKING MEASUREMENTS ON REDUCED PLANS, THE ABOVE SCALES MAY BE USED.

J.U.L.I.E.  
JOINT UTILITY LOCATION INFORMATION FOR EXCAVATION  
1-800-892-0123

ROCK ISLAND COUNTY  
ZUMA TOWNSHIP, SECTION 3

CONTRACT NO. 64719

STATE OF ILLINOIS  
DEPARTMENT OF TRANSPORTATION  
DIVISION OF HIGHWAYS

SUBMITTED SEPT 2 2005  
Deputy Mounts  
DEPUTY DIRECTOR OF HIGHWAYS, REGION ENGINEER

October 14, 2005  
Mike Hine  
ENGINEER OF DESIGN AND ENVIRONMENT

October 14, 2005  
Eric E. Blum  
DEPUTY DIRECTOR OF HIGHWAYS, CHIEF ENGINEER

**PRINTED BY THE AUTHORITY  
OF THE STATE OF ILLINOIS**

# SUMMARY OF QUANTITIES

F.A.S. RTE.	SECTION	COUNTY	TOTAL SHEETS	SHEET NO.
203	9BR-4	ROCK ISLAND	21	2
STA.		TO STA.		
FED. ROAD DIST. NO.		ILLINOIS	FED. AID PROJECT	

CODE NUMBER	PAY ITEM	UNIT	TOTAL QUANTITY	X080-2A 80 % FED 20 % STATE	
20200100	EARTH EXCAVATION	CU YD	52	52	
20400800	FURNISHED EXCAVATION	CU YD	83	83	
21101615	TOPSOIL FURNISH AND PLACE, 4"	SO YD	142	142	
25100630	EROSION CONTROL BLANKET	SO YD	4166	4166	
28000250	TEMPORARY EROSION CONTROL SEEDING	POUND	20	20	
28000400	PERIMETER EROSION BARRIER	FOOT	588	588	
28000500	INLET AND PIPE PROTECTION	EACH	1	1	
44000007	BITUMINOUS SURFACE REMOVAL 2"	SO YD	116	116	
48101200	AGGREGATE SHOULDERS, TYPE B	TON	220	220	
50101500	REMOVAL OF EXISTING SUPER STRUCTURES	EACH	1	1	
50400405	PRECAST PRESTRESSED CONCRETE DECK BEAMS (21" DEPTH)	SO FT	1411	1411	
50901005	STEEL BRIDGE RAIL, TYPE SM	FOOT	158	158	
51500100	NAME PLATES	EACH	1	1	
54213450	END SECTION 15	EACH	2	2	
54213465	END SECTION 30	EACH	2	2	
54200220	PIPE CULVERTS, CLASS D, TYPE 1, 15"	FOOT	90	90	
54200235	PIPE CULVERTS, CLASS D, TYPE 1, 30"	FOOT	124	124	
58100200	WATERPROOFING MEMBRANE SYSTEM	SO YD	158	158	

PLOT DATE = Fri Sep 02 11:46:59 2005  
 PLOT SCALE = 1/8" = 100'-0"  
 USER NAME = rjones

F.A.S. RTE.	SECTION	COUNTY	TOTAL SHEETS	SHEET NO.
203	98R-4	ROCK ISLAND	21	3
STA.		TO STA.		
FED. ROAD DIST. NO.	ILLINOIS	FED. AID PROJECT		

# SUMMARY OF QUANTITIES

CODE NUMBER	PAY ITEM	UNIT	TOTAL QUANTITY	X080-2A 80 % FED 20 % STATE	
58300100	PORTLAND CEMENT MORTAR FAIRING COURSE	FOOT	428	428	
59000100	EPOXY CRACK SEALING	FOOT	10	10	
* 63000000	STEEL PLATE BEAM GUARD RAIL, TYPE A	FOOT	12.5	12.5	
* 63100087	TRAFFIC BARRIER TERMINAL, TYPE 6A	EACH	4	4	
* 63100167	TRAFFIC BARRIER TERMINAL TYPE 1, SPECIAL (TANGENT)	EACH	3	3	
* 63100169	TRAFFIC BARRIER TERMINAL TYPE 1, SPECIAL (FLARED)	EACH	1	1	
63200310	GUARDRAIL REMOVAL	FOOT	288	288	
63500105	DELINEATORS	EACH	4	4	
66700305	PERMANENT SURVEY MARKERS, TYPE II	EACH	2	2	
67000400	ENGINEER'S FIELD OFFICE, TYPE A	CAL MO	3	3	
67100100	MOBILIZATION	L SUM	1	1	
* 78001110	PAINT PAVEMENT MARKING - LINE 4"	FOOT	560	560	
* 78100100	RAISED REFLECTIVE PAVEMENT MARKER	EACH	2	2	
78200410	GUARDRAIL MARKERS, TYPE A	EACH	16	16	
78201000	TERMINAL MARKER - DIRECT APPLIED	EACH	4	4	
X0322194	POLYMER MODIFIED PORTLAND CEMENT MORTAR	SQ FT	2.1	2.1	
X4066414	BITUMINOUS CONCRETE SURFACE COARSE, SUPERPAVE, MIX "C", N50	TON	95	95	
X7013015	TRAFFIC CONTROL FOR ROAD CLOSURE	L SUM	1	1	
Z0013798	CONSTRUCTION LAYOUT	L SUM	1	1	

\* SPECIALTY ITEMS

PLOT DATE : Fri Sep 02 11:46:59 2005  
 FILE NAME : c:\projects\2005\981\080910\1000.dgn  
 PLOT SCALE : 50.0000 / 1 IN.  
 USER NAME : j.parker

# GENERAL NOTES

ROUTE NO.	SEC.	COUNTY	TOTAL SHEETS	SHEET NO.
FAS 203 (Moline Road)	9BR-4	Rock Island	21	4
FED ROAD DIST. NO.	ILLINOIS	PROJECT		
Contract #64719				

The final top 100 mm (four inches) of soil in any right-of-way area disturbed by the Contractor must be capable of supporting vegetation. The soil must be from the A horizon (zero to 2' deep) of soil profiles of local soils.

The Contractor shall seed all disturbed areas within the project limits. Seeding Class 4 or 6 (modified) shall be used, except in front of properties where the grass will be mowed, then use Seeding, Class 1 (modified). Class 6 (modified) shall be used on front slopes and ditch bottoms. Class 4 shall be used behind Type A gutter, on all backslopes and areas behind the backslope, and beyond the toe of front slope on fill sections without ditches. This work will be included in the contract unit price per Cubic Meter (Cubic Yard) for FURNISHED EXCAVATION.

Fertilizer shall be applied to all disturbed areas and incorporated into the seedbed prior to seeding or placement of sod at the rate specified in Sections 250 and 252 of the Standard Specifications. This work shall be included in the cost of FURNISHED EXCAVATION.

Mulch Method II shall be applied over all seeded areas. This shall be included in the cost of the FURNISHED EXCAVATION.

The following Mixture Requirements are applicable for this project:

Mixture Uses(s):	Mainline Surface Course
PG:	PG 64-22
RAP%: (Max)	10%
Design Air Voids	4.2 @ N70
Mixture Composition (Gradation Mixture)	IL 9.5 or 12.5
Friction Aggregate	C
20 Year ESAL	4.3

This structure will retain the same number 081-0034.

Embankment quantities for the construction of the Traffic Barrier Terminals as shown in the plans are included in quantities for Furnished Excavation.

The Contractor shall supply the Resident Engineer with the manufacturer's installation requirements for the type of Steel Plate Beam Guardrail Terminal Type 1 Special (Tangent) or Steel Plate Beam Guardrail Terminal Type I Special (Flared).

Bituminous Prime Coat shall be placed in accordance with Section 406 of the Standard Specifications. The cost of the Bituminous Prime Coat shall be included in the contract unit price per TON for SURFACE COURSE, SUPERPAVE, MIX C, N50.

One 16d galvanized nail shall be used to toe nail the wood block out to the wood post on all Traffic Barrier Terminal Type I Specials.

Delineators shall be installed as shown in Standard 635001, except that the post shall be rotated 180° and only metal-backed delineators shall be permitted.

Delineators shall be placed at the ends of approach guardrail terminal sections, and at each headwall or end section of AR Culverts. This work will be paid for at the contract unit price each for DELINEATORS.

Pavement marking shall be done according to Standard 780001, except as follows:

1. All words, such as ONLY, shall be 2.4 m (8 feet) high.
2. All non-freeway arrows shall be the large size.
3. The distance between yellow no-passing lines shall be 200 mm (8"), not 180 mm (7") as shown in the detail of Typical Lane and Edge Lines.

Permanent survey markers, Type II shall be cast-in-place as shown on Highway Standard 667101. A marker shall be placed near each end of the structure in such a location that will take into account satellite and future construction. Location shall be determined by the Engineer.

The Contractor shall submit to the Engineer a description of location, elevation, and coordinates for each permanent survey marker. The Engineer shall submit this information to the Survey Crew.

The following quantities have been estimated for the Good Neighbor Policy as needed:  
 X4066414 Bituminous Surface Course, Superpave, Mix "C", N50 - 50 tons  
 48101200 Aggregate Shoulder, Type B - 80 ton

Rock Island County Engineer shall be informed 1 week prior to the construction beginning. Above listed shall be invited to the pre-construction meeting.

The Contractor shall be responsible for protecting utility property during construction operations as outlined in Article 107.31 of the Standard Specifications. A minimum of 48 hours advance notice is required for non-emergency work. The JULIE number is 800-892-0123. The following listed utilities located within the project limits or immediately adjacent to the project construction limits are members of JULIE:

Mediacom	Commonwealth Edison
Alliant Energy	Citizen's Telephone
Dome Pipeline Corp.	

Following are the known utilities located within the project limits or immediately adjacent to the project construction limits which are not members of JULIE and should be notified individually by the contractor:

Mr. Dennis Schultz  
 IDOT  
 819 Depot Ave.  
 Dixon, IL 61021

Due to environmental concerns, the following shall be strictly adhered to:

1. All work shall be performed from the existing decks and no work shall take place below the existing structure on the ground.
2. No fill shall be placed in or around Zuma Creek.

The Resident Engineer, prior to closing the road and after the project is finished, shall contact the corresponding Township and the Rock Island County Engineer to videotape the following roads: From Moline Road to 286 Street North/50<sup>th</sup> Avenue North, to IL 92 to Moline Road.

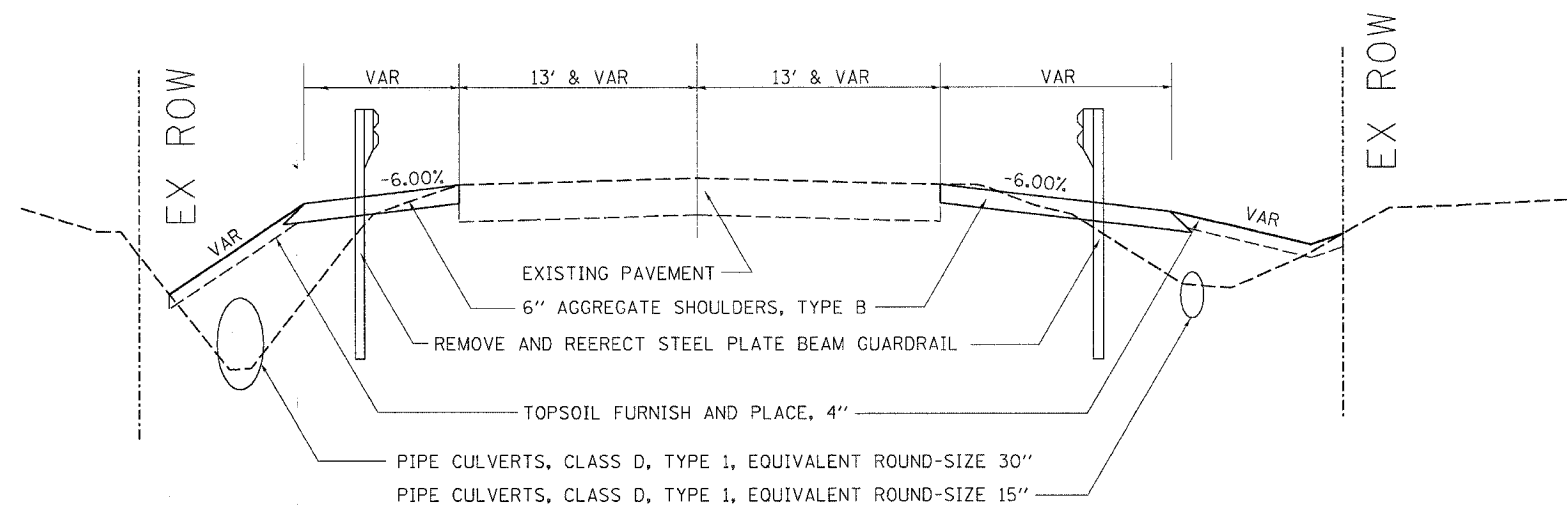
Program #5  
(Arch. Size)  
Enlarge  
200%  
Enlarge 107%

F.A.S. RTE.	SECTION	COUNTY	TOTAL SHEETS	SHEET NO.
203	9BR-4	ROCK ISLAND	21	5
STA.		TO STA.		
FED. ROAD DIST. NO.	ILLINOIS	FED. AID PROJECT		

# TYPICAL SECTIONS

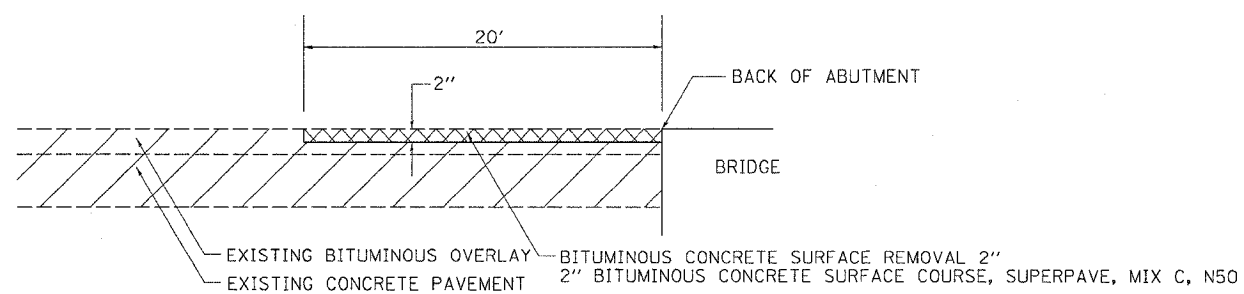
MOLINE RD.

STA. 91+15.47 - STA. 92+51.43  
 STA. 93+34.16 - STA. 93+71.95



## BITUMINOUS SURFACE REMOVAL

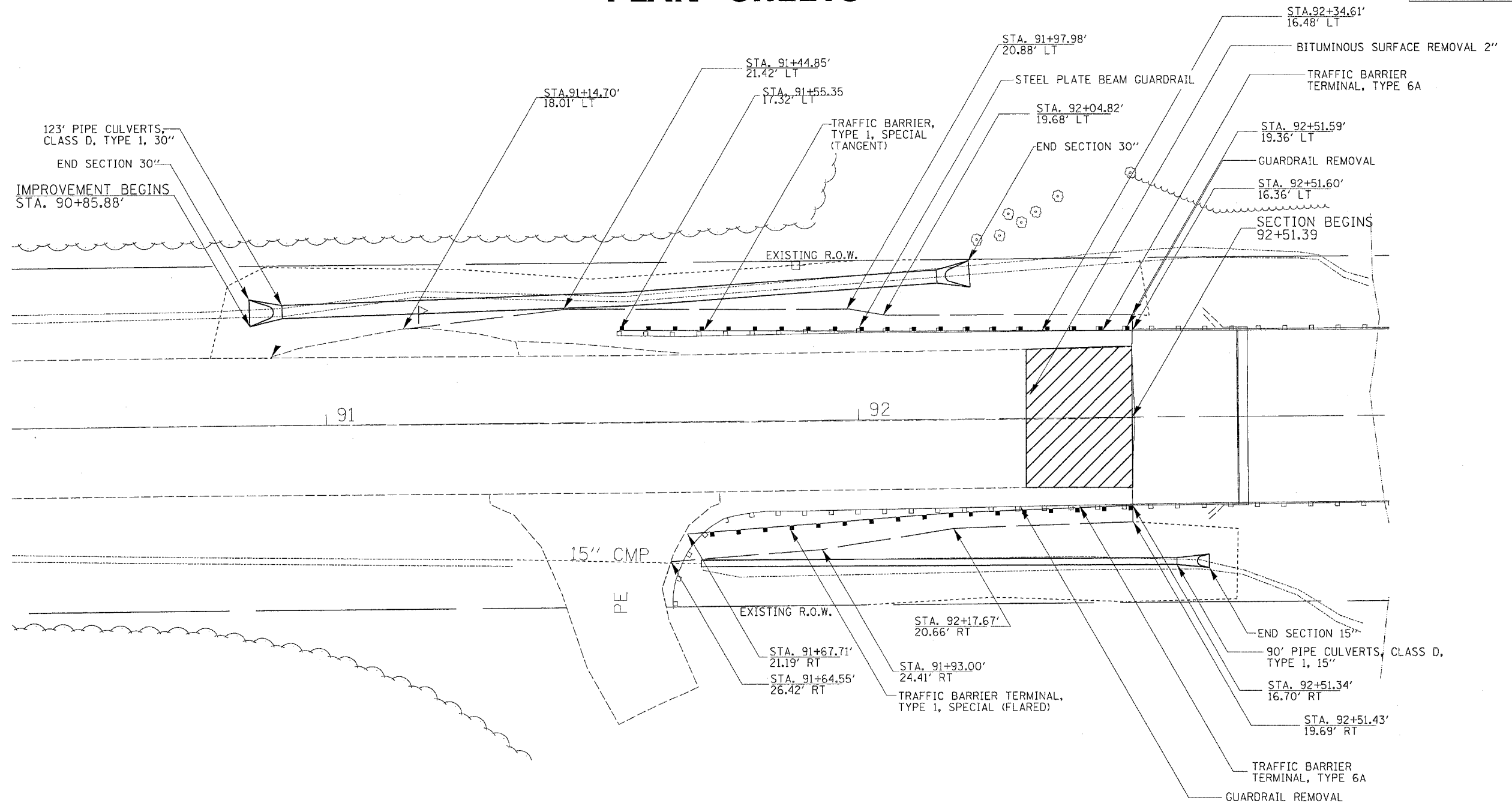
STA 92+31 TO STA 92+51  
 STA 93+34 TO STA 93+54





F.A.S. RTE.	SECTION	COUNTY	TOTAL SHEETS	SHEET NO.
203	9BR-4	ROCK ISLAND	21	7
STA.		TO STA.		
FED. ROAD DIST. NO.		ILLINOIS	FED. AID PROJECT	

# PLAN SHEETS



**NOTE:**  
SEE DISTRICT STD. 40.1 FOR LAYOUT OF ROAD CLOSURE

PLOT DATE = Fri, Sep 02 11:47:04 AM  
 FILE NAME = C:\Users\j...  
 PLOT SCALE = 20.0000 / IN.  
 USER NAME = j...

REVISIONS	
NAME	DATE

ILLINOIS DEPARTMENT OF TRANSPORTATION

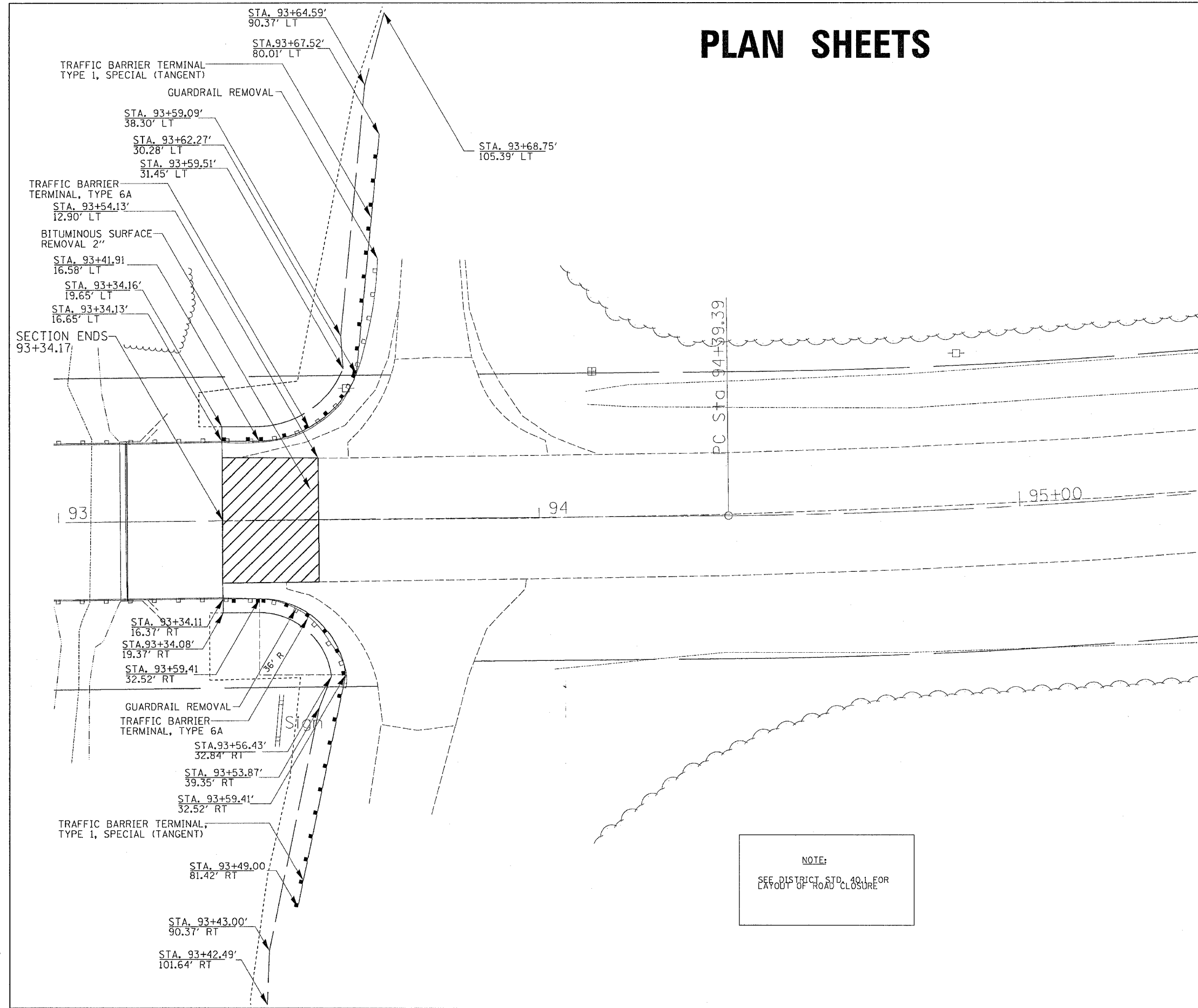
SCALE: VERT. \_\_\_\_\_  
 HORIZ. \_\_\_\_\_

DATE \_\_\_\_\_

DRAWN BY \_\_\_\_\_  
 CHECKED BY \_\_\_\_\_

F.A.S. RTE.	SECTION	COUNTY	TOTAL SHEETS	SHEET NO.
203	9BR-4	ROCK ISLAND	21	8
STA.		TO STA.		
FED. ROAD DIST. NO.		ILLINOIS FED. AID PROJECT		

# PLAN SHEETS



NOTE:  
SEE DISTRICT STD. 40.1 FOR  
LAYOUT OF ROAD CLOSURE

PLOT DATE = Fri Sep 02 11:47:04 2005  
FILE NAME = c:\p\projects\p208203\080908\plan.dgn  
PLOT SCALE = 20:0000 / IN.  
USER NAME = rjgpr-1

REVISIONS	
NAME	DATE

ILLINOIS DEPARTMENT OF TRANSPORTATION

SCALE: VERT. \_\_\_\_\_  
HORIZ. \_\_\_\_\_

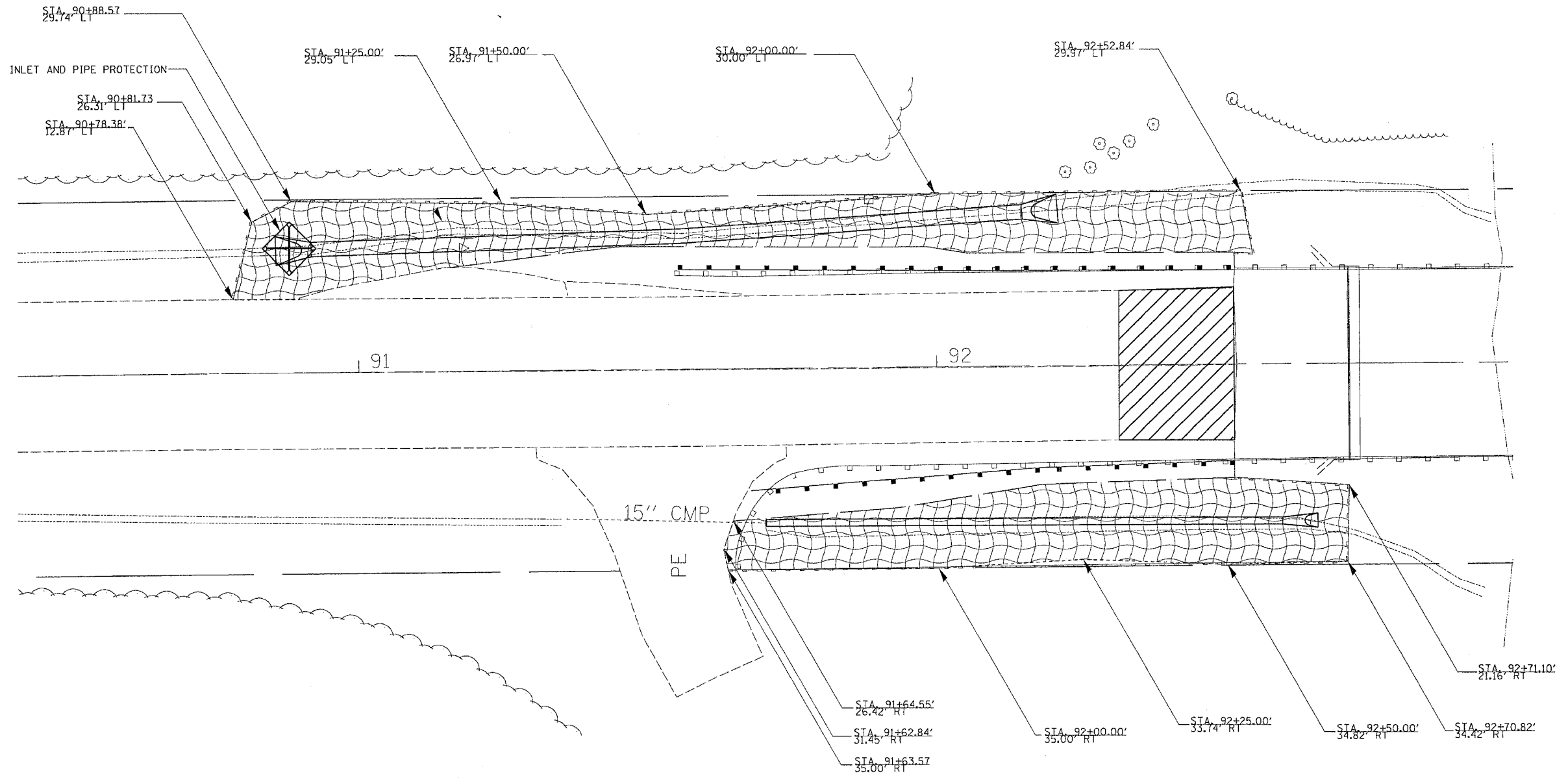
DATE \_\_\_\_\_

DRAWN BY \_\_\_\_\_  
CHECKED BY \_\_\_\_\_



# EROSION CONTROL SHEETS

CONTRACT NO. 64719				
F.A.S. RTE.	SECTION	COUNTY	TOTAL SHEETS	SHEET NO.
203	9BR-4	ROCK ISLAND	21	9
STA.		TO STA.		
FED. ROAD DIST. NO.	ILLINOIS	FED. AID PROJECT		



LEGEND	
	PERIMETER EROSION BLANKET
	EROSION CONTROL BLANKET & SEEDING
	INLET AND PIPE PROTECTION

PLOT DATE = Fri, Sep 02, 11:47:01, 2005  
 FILE NAME = c:\projects\981265\981265.dgn  
 PLOT SCALE = 20.0000' / IN.  
 USER NAME = reynor1

REVISIONS	
NAME	DATE

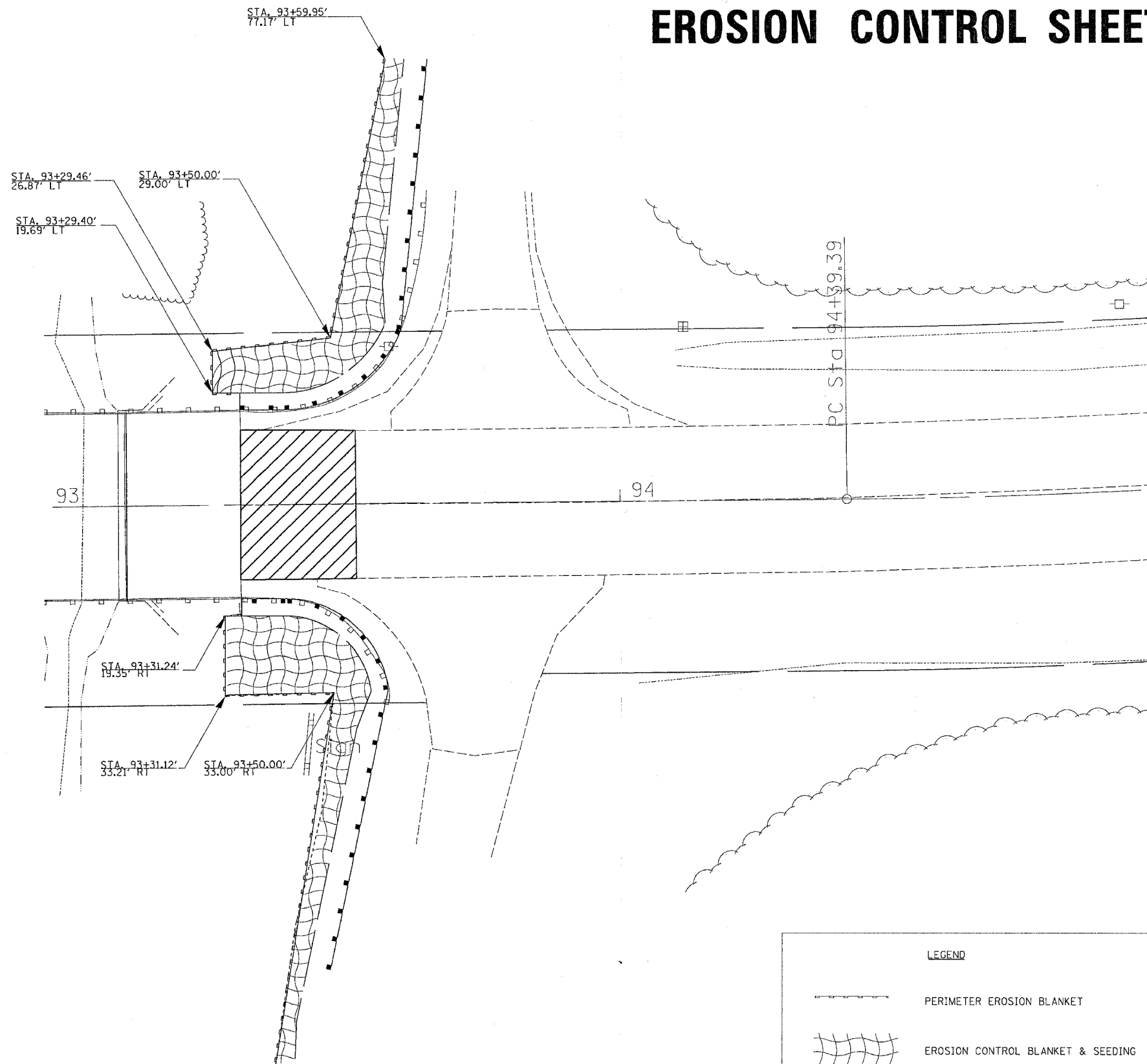
ILLINOIS DEPARTMENT OF TRANSPORTATION

SCALE: VERT. \_\_\_\_\_  
 HORIZ. \_\_\_\_\_  
 DATE \_\_\_\_\_

DRAWN BY \_\_\_\_\_  
 CHECKED BY \_\_\_\_\_

F.A.S. RTE.	SECTION	COUNTY	TOTAL SHEETS	SHEET NO.
203	9BR-4	ROCK ISLAND	21	10
STA.		TO STA.		
FED. ROAD DIST. NO.		ILLINOIS	FED. AID PROJECT	

# EROSION CONTROL SHEETS



LEGEND	
	PERIMETER EROSION BLANKET
	EROSION CONTROL BLANKET & SEEDING
	INLET AND PIPE PROTECTION

REVISIONS	
NAME	DATE

ILLINOIS DEPARTMENT OF TRANSPORTATION

SCALE: VERT.  
HORIZ.  
DATE

DRAWN BY  
CHECKED BY

## EROSION CONTROL SHEETS

PLOT DATE = Fri Sep 02 11:47:02 2005  
FILE NAME = c:\pwork\p20898\1\085981er.dgn  
PLOT SCALE = 26.86000' / IN.  
USER NAME = rajneer

ROUTE NO.	SECTION	COUNTY	SHEET	PAGE	SHEET NO.
FAS 203	9BR-M	ROCK ISLAND	21	11	7 SHEETS
FED. ROAD DIST. NO. 7		ILLINOIS	FED. AID PROJECT		

Contract No. 64719

Bench Mark:

Existing Structure: Designated as structure at Station 522+40, built in 1922 under SBI Route 3, Section 9-9B. Originally a slab bridge, the superstructure was replaced in 1970 with PPC-deck beams. The existing structure is a single span 21" x 36" PPC-deck beam bridge with closed abutments, top & bottom restrained, on piles. The back to back abutment length is 43'-0" and the out to out width is 33'-0". The existing deck beams and bridge railing are to be removed and replaced. Road closure shall be used during construction.

No Salvage

**Index of Sheets**

1. General Plan
2. General Notes
3. Type SM Steel Bridge Rail Side Mounted
4. Superstructure Details-1
5. Superstructure Details-2
6. Abutments
7. Concrete Repair

**LOADING HS20-44 (New Construction)**

No Allowance for future wearing surface.

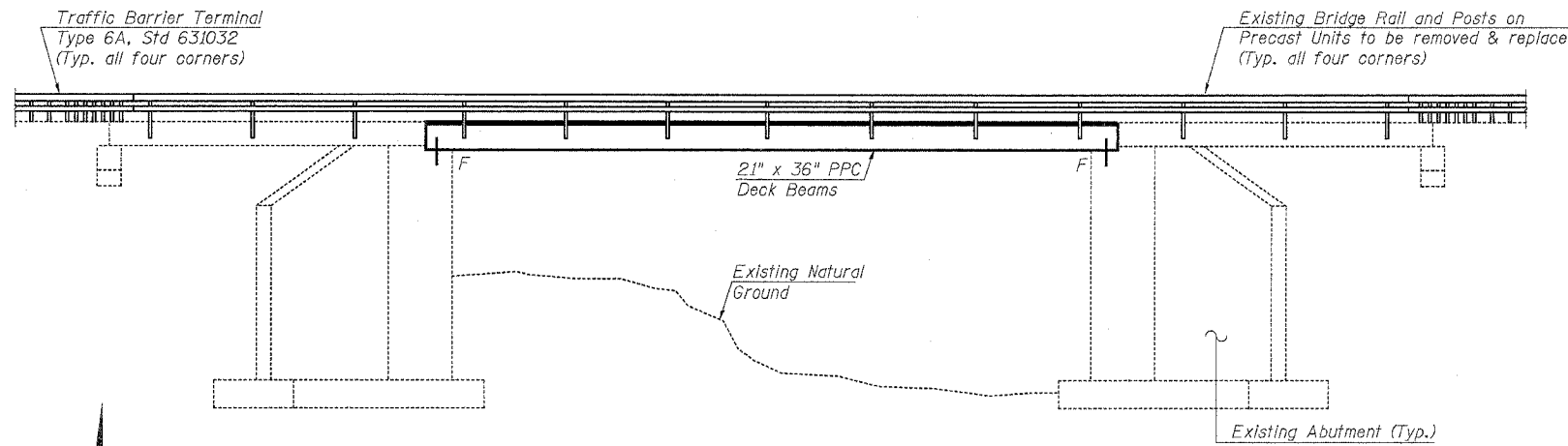
**DESIGN SPECIFICATIONS (New Construction)**

2002 AASHTO

**DESIGN STRESSES**

**PRECAST PRESTRESSED UNITS**

- $f'_c = 5,000$  psi
- $f'_{ci} = 4,000$  psi
- $f'_s = 270,000$  psi ( $\frac{1}{2}$ "  $\phi$  low lax. strands)
- $f_{si} = 201,960$  psi ( $\frac{1}{2}$ "  $\phi$  low lax. strands)



Sta. 92+00	Elev. 596.79
Sta. 92+50	Elev. 596.74
Sta. 93+00	Elev. 596.91
Sta. 93+50	Elev. 596.76
Sta. 94+00	Elev. 596.74

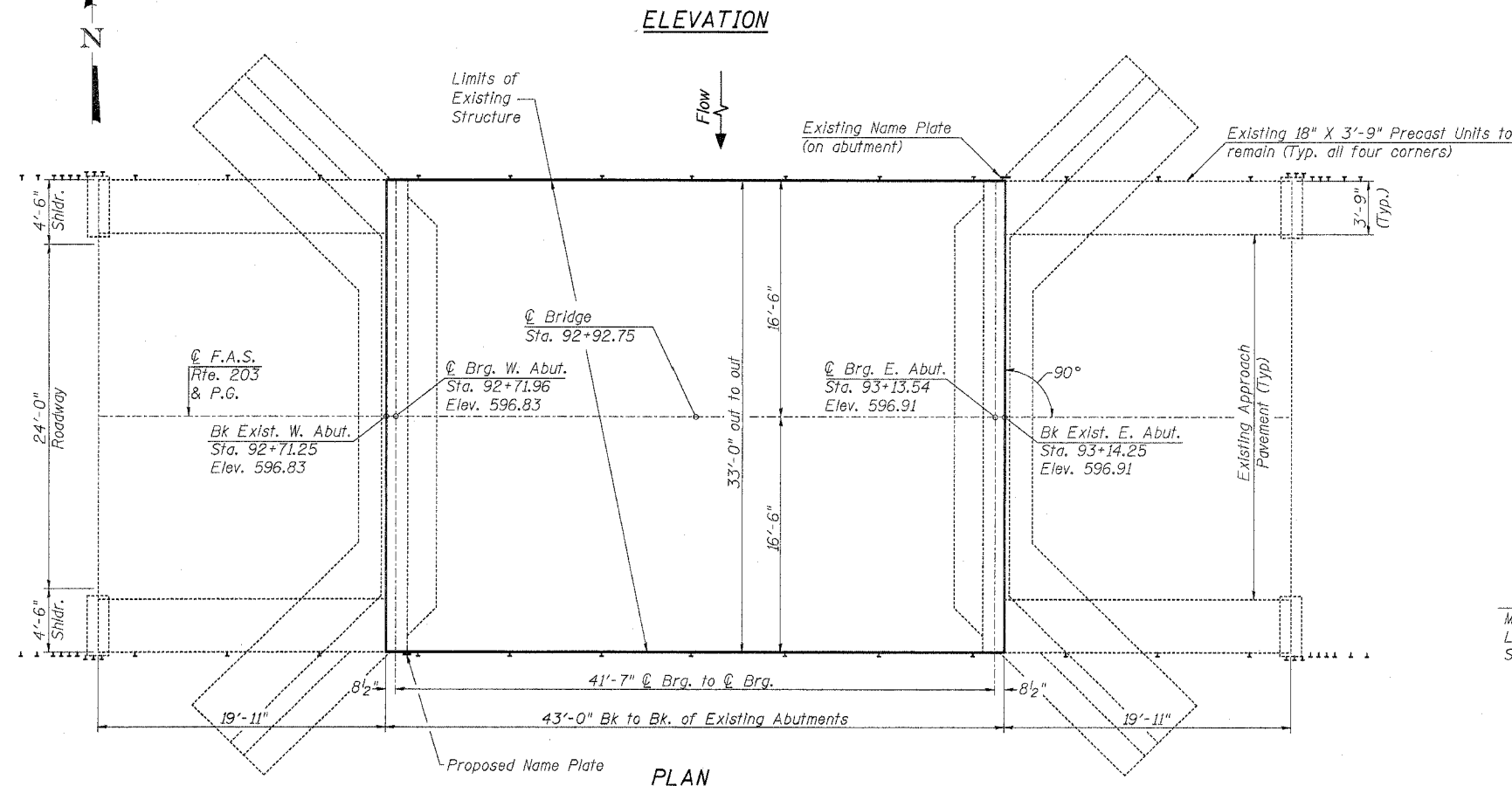
**EXISTING PROFILE GRADE**

(Along  $\phi$  Roadway)

**\*Existing Beam Removal and Proposed Beam Erection Sequence:**

1. Two adjacent lines of existing beams shall be removed.
2. One new beam shall be installed and doweled into position.
3. One adjacent existing beam shall be removed.
4. Repeat steps 2 and 3 for remainder of beams.

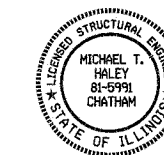
\* If the Contractor chooses an alternate method of beam removal and replacement, the contractor must submit details and calculations for a bracing system for approval. The details are to be signed & sealed by an Illinois licensed Structural Engineer.



STATION 92+93  
REBUILT 20... BY  
STATE OF ILLINOIS  
F.A.S. ROUTE 203-SEC 9BR-M  
LOADING HS20  
STRUCTURE NO. 081-0034

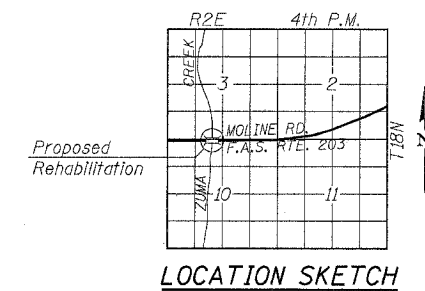
**NAME PLATE**

(See Std. 515001)  
Existing Nameplate to Remain



Michael J. Haley  
Michael T. Haley  
Licensed Structural Engineer  
State of Illinois No. 81-5991

8/5/05  
Date



...0810034.dgn

11:04:45 AM

8/5/2005

**LIN ENGINEERING, LTD.**  
200 W. Chestnut Chatham, Illinois 62629  
3171 483-488 FAX (317) 483-4700  
Designed By: DLS Checked By: MTH Drawn By: JWD  
Date: 07/05 File: 0810034.dgn

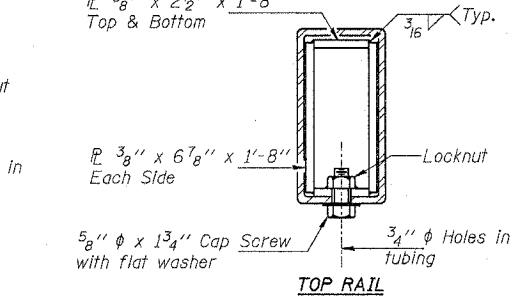
REVISIONS	
NAME	DATE

ILLINOIS DEPARTMENT OF TRANSPORTATION  
**GENERAL PLAN**  
MOLINE ROAD OVER ZUMA CREEK  
F.A.S. ROUTE 203-SECTION 9BR-M  
ROCK ISLAND COUNTY  
STATION 92+92.75  
STRUCTURE NO. 081-0034



ROUTE NO.	SECTION	COUNTY	SHEET	SHEET NO.
FAS 203	9BR-M	ROCK ISLAND	21	13
FED. ROAD DIST. NO. 7	ILLINOIS	FED. AID PROJECT		

Contract No. 64719



SECTIONS AT RAIL SPLICE

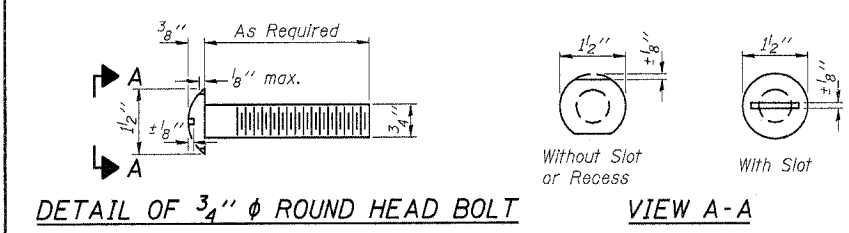
NOTES

Hollow structural sections shall conform to the requirements of ASTM designation A 500 Grade B Structural Steel Tubing and shall meet the longitudinal CVN requirements of 15 ft-lbs at 0° F. All other steel shapes and plates shall conform to the requirements of AASHTO M 270 Grade 36 except posts and angles shall conform to AASHTO M 270, Grade 50. Bolts, cap screws, and nuts shall conform to the requirements of ASTM designation A 307 except for high strength bolts, nuts and washers noted which shall conform to AASHTO M 164. All bolts, nuts, cap screws, washers and lock washers shall be galvanized according to AASHTO M 232. All posts, railing, rail splices, anchor devices and angles shall be galvanized after shop fabrication according to AASHTO M 111 and ASTM A 385. Galvanized rail shall not be painted. Railing shall be according to Section 509 of the Standard Specifications, except as noted, and will be paid for at the contract unit price per foot for Steel Bridge Rail, Type SM. All field drilled holes shall be coated with an approved zinc rich paint before erection. For multi-span bridges, sufficient 1/4" x 6" x 1'-2" galvanized steel shims shall be provided to align rail between adjacent spans. Cost included with Steel Bridge Rail, Type SM. The 1/2" x 7" x 6" plates that come in contact with concrete shall receive two coats of asphalt paint conforming to Section 1060.07 Type II or place 1/8" fabric bearing pads between the plates and concrete. The 3/4" high strength bolts used to connect the 6 x 4 x 3/4 angles to the post shall be tightened according to Article 505.04(F)(2) of the Standard Specifications. The 1" high strength bolts connecting the angles to the concrete shall be tightened to a snug fit and given an additional 1/8 turn. The 5/8" cap screws in bottom of posts shall be tightened to a snug fit only. For rail post spacing, See Sheet 4 of 7. For connection to existing precast approach beams, See Sheet 2 of 7.

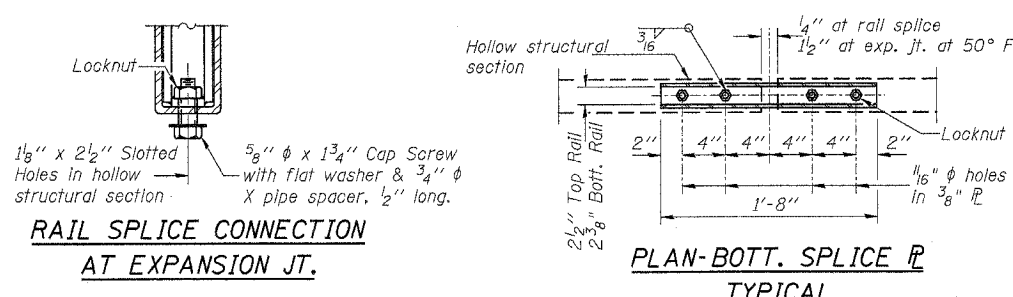
BILL OF MATERIAL

Item	Unit	Quantity
Steel Bridge Rail, Type SM	Foot	158

ILLINOIS DEPARTMENT OF TRANSPORTATION  
**TYPE SM**  
**STEEL BRIDGE RAIL SIDE MOUNTED**  
**F.A.S. ROUTE 203-SECTION 9BR-M**  
**ROCK ISLAND COUNTY**  
**STATION 92+92.75**  
**STRUCTURE NO. 081-0034**

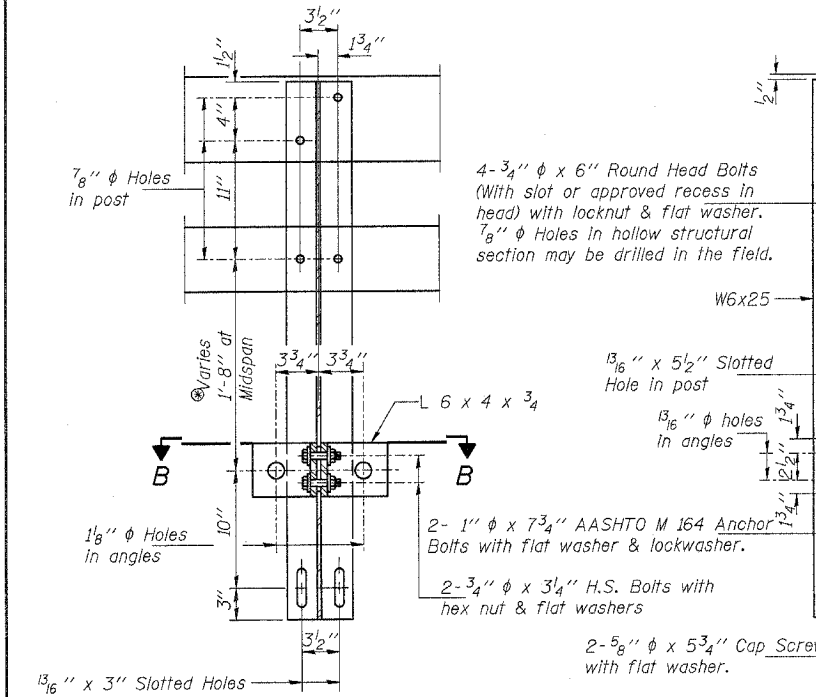


DETAIL OF 3/4"  $\phi$  ROUND HEAD BOLT VIEW A-A

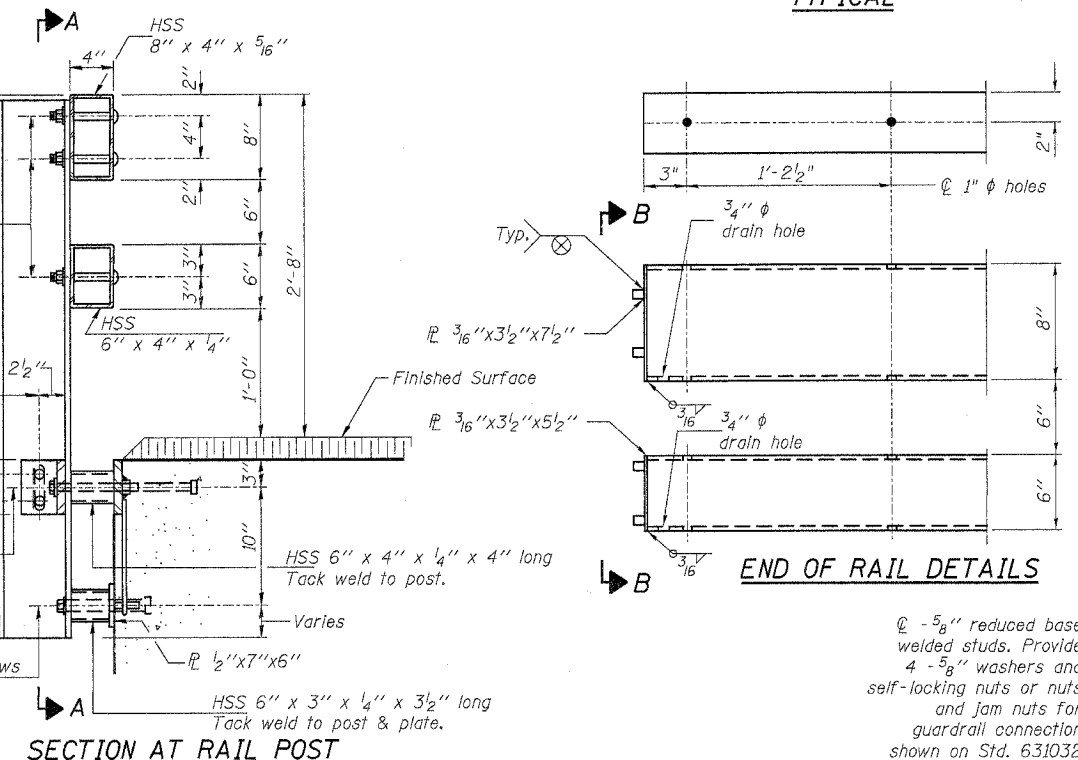


RAIL SPLICE CONNECTION AT EXPANSION JT. PLAN-BOTT. SPLICE TYPICAL

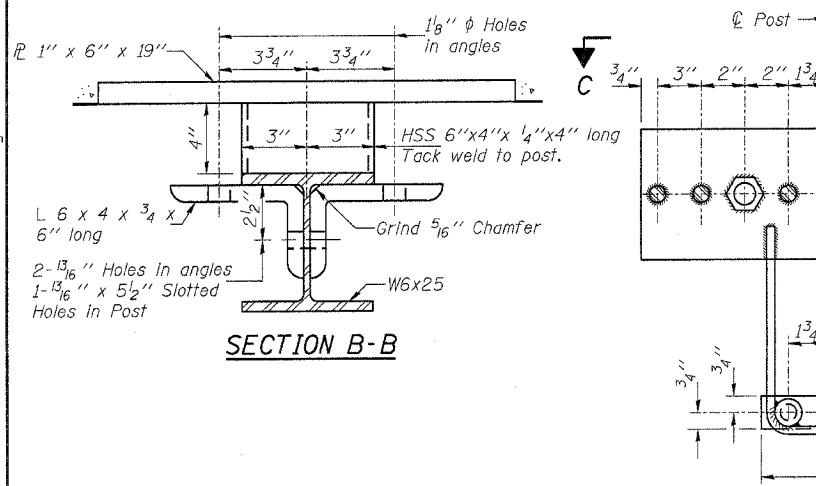
Dimension is based on a 2" bituminous surface thickness at midspan.



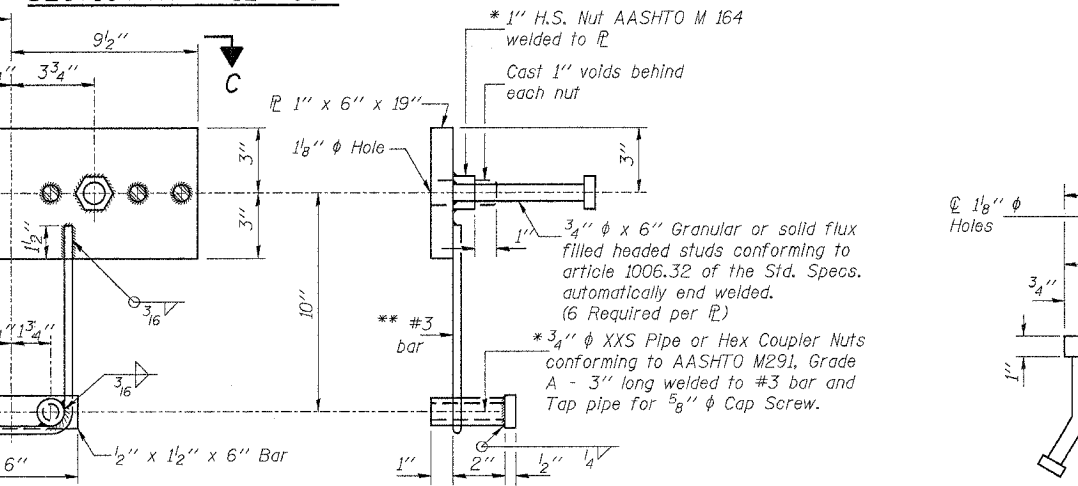
SECTION A-A



SECTION AT RAIL POST



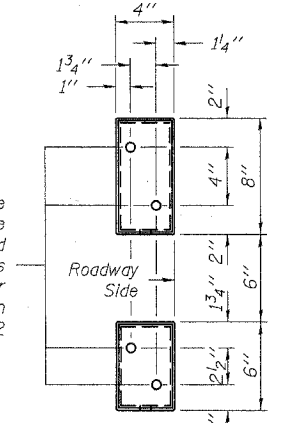
SECTION B-B



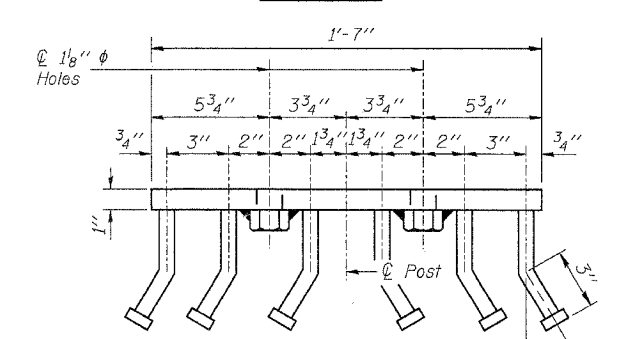
ANCHOR DEVICE

\* Threaded areas shall be plugged or blocked off during casting of beam. Galvanized after fabrication.  
 \*\* Whenever the lower insert assemblies interfere with strand locations, the #3 bars shall be cut and adjusted in order to allow raising or lowering of the lower inserts. Maximum adjustment not to exceed 1/2".

END OF RAIL DETAILS



VIEW B-B



VIEW C-C

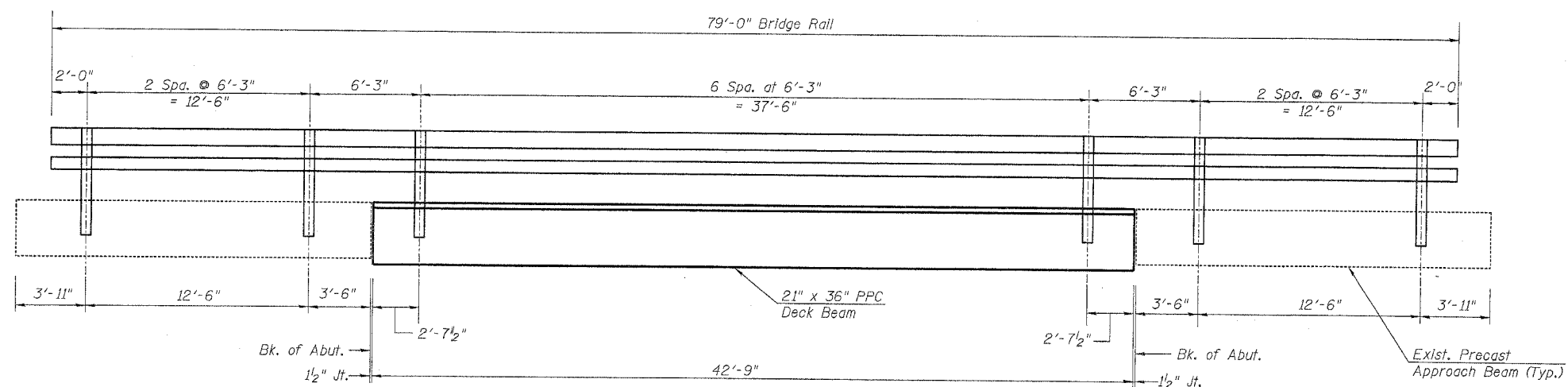
REVISIONS	
NAME	DATE

**LI ENGINEERING, LTD.**  
 200 W. Chestnut  
 1577-483-488  
 Designd By: DLS  
 Date: 07/05

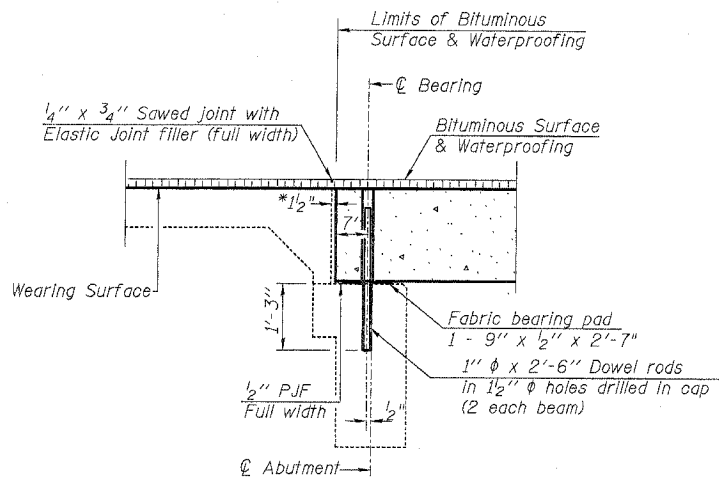
Channah, Illinois 62629  
 FAX: (618) 483-4706  
 Checked By: MTH  
 Drawn By: JMD  
 File: 0810034.DWG

11:04:56 AM  
 8/5/2005  
 \0810034.dgn

ROUTE NO.	SECTION	COUNTY	SHEET	SHEET	SHEET NO.
FAS 203	9BR-M	ROCK ISLAND	21	14	7 SHEETS
FED. ROAD DIST. NO. 7 ILLINOIS FED. AID PROJECT-					
Contract No. 64719					

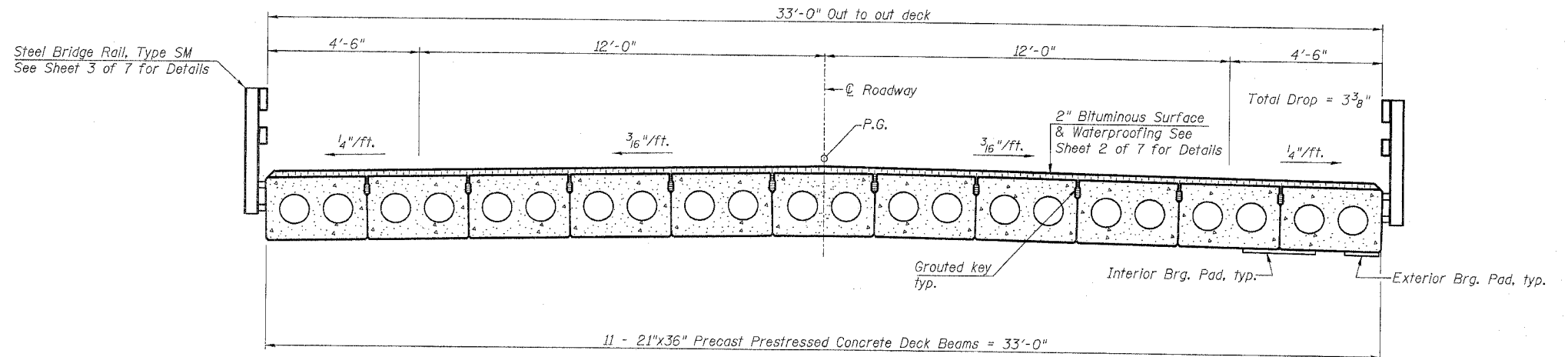


**RAIL POST SPACING**

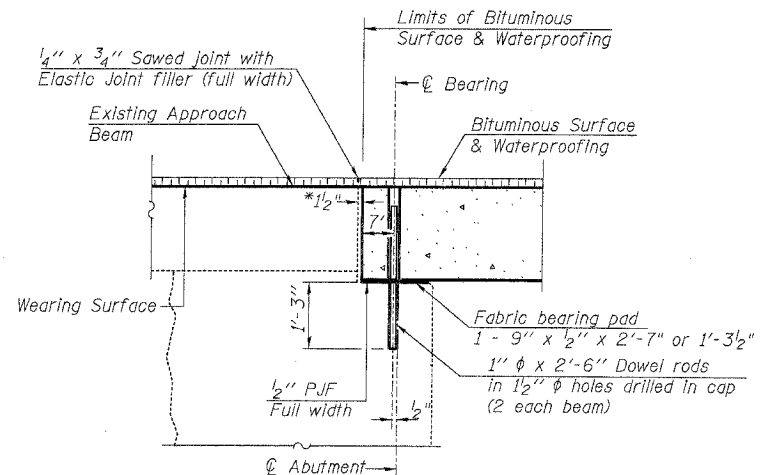


**SECTION THRU ABUTMENT AT INTERIOR BEAMS**

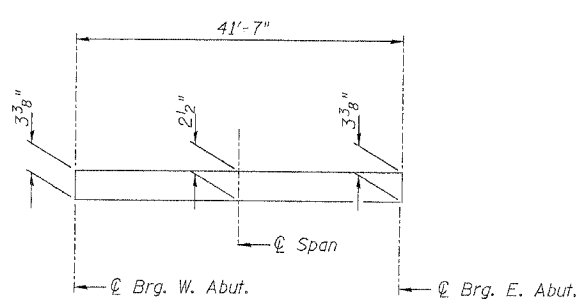
\* 1/2" Joint shall be filled with non-shrink grout. 1/2" dimension may vary to accommodate tolerance in beam length.



**CROSS SECTION**

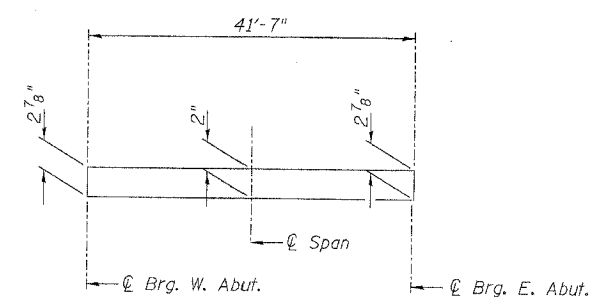


**SECTION THRU ABUTMENT AT OUTSIDE BEAMS**



**BITUMINOUS SURFACE PROFILE**

(Bituminous surface along ⊕ of Roadway)



**BITUMINOUS SURFACE PROFILE**

(Bituminous surface along edge of beams.)

Notes:  
 After beams have been erected, holes for dowel rods shall be drilled into substructure and dowel rods placed. Dowel holes shall be filled with non-shrink grout to top of beam and allowed to cure a minimum of 24 hrs prior to grouting the shear keys.  
 See sheet 5 of 7 for bearing pad details.  
 Dowel rods drilled in cap are included in the cost of Precast prestressed Concrete Deck Beams (21" depth).  
 See Sheet 2 of 7 for connection of rail posts to existing precast approach beams.

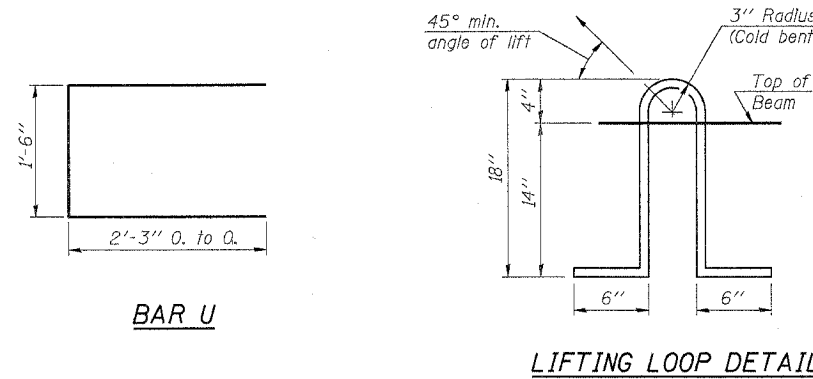
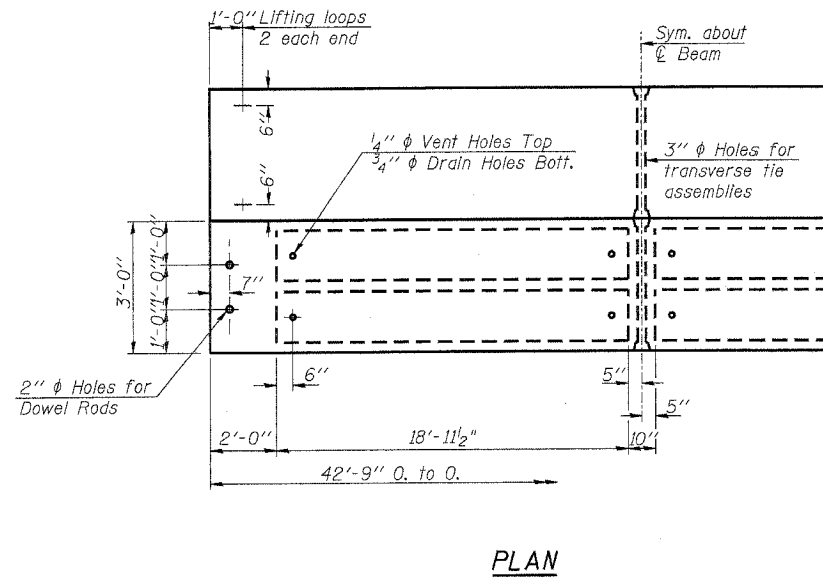
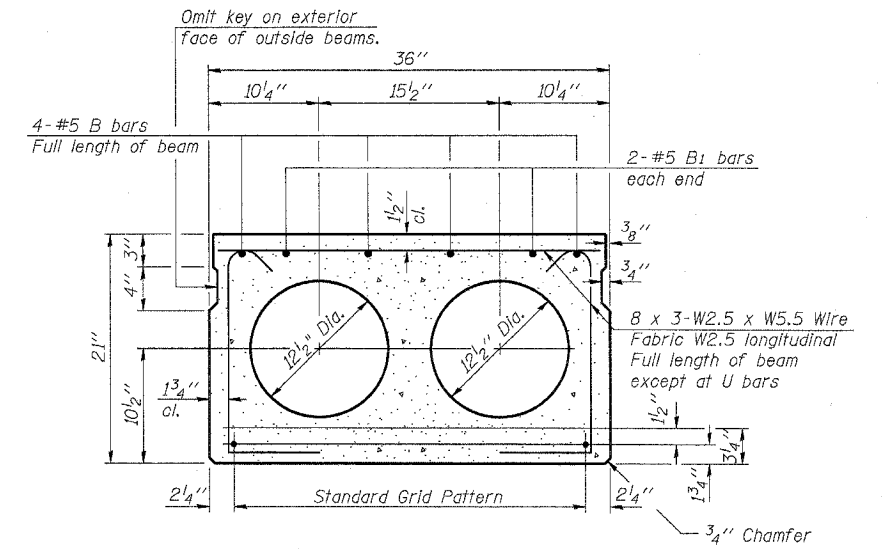
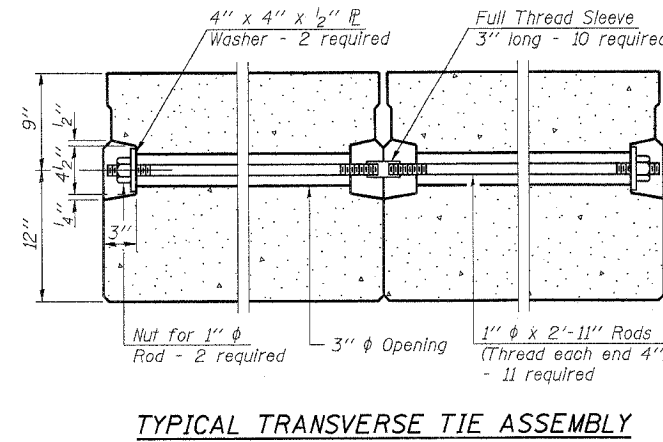
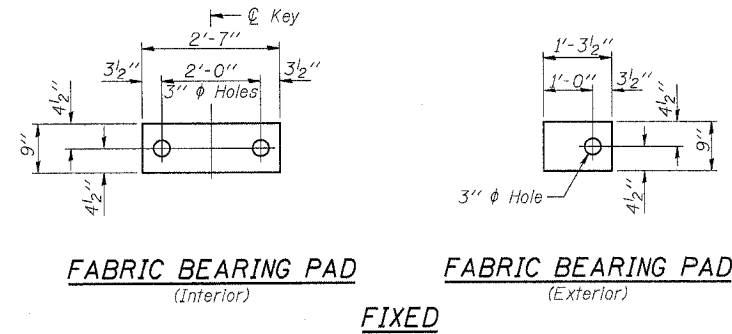
8/5/2005 11:32:39 AM ... \0810034.dgn

REVISIONS	
NAME	DATE

ILLINOIS DEPARTMENT OF TRANSPORTATION  
**SUPERSTRUCTURE DETAILS - 1**  
 MOLINE ROAD OVER ZUMA CREEK  
 F.A.S. ROUTE 203-SECTION 9BR-M  
 ROCK ISLAND COUNTY  
 STATION 92+92.75  
 STRUCTURE NO. 081-0034

**LIN ENGINEERING, LTD.**  
 20 N. Chestnut  
 217-431-4668  
 Designed By: DLS  
 Date: 07/05

Chatham, Illinois 62629  
 FAX: 217-431-4706  
 Checked By: WFM  
 Drawn By: JMD  
 File: 080034.DGN

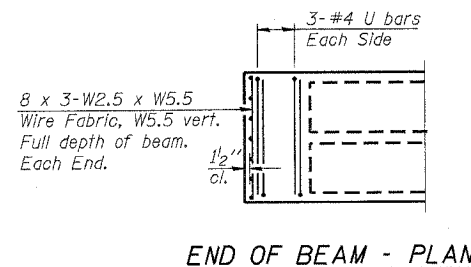


**NOTES**

- Prestressing steel shall be uncoated high strength, low relaxation 7-wire strand, Grade 270. The nominal diameter shall be 1/2" and the nominal cross-sectional area shall be 0.153 sq. in. Lifting loops shall be 2-2" phi-270 ksi strands, as shown.
- The 1" phi rods in the transverse tie assembly shall be tightened to a snug fit and the threads set. Pockets that receive transverse tie bar on outside shall be filled with grout after transverse tie assembly is in place.
- Non prestressing steel shall conform to AASHTO M-31 or M 322 Grade 60.
- The bearing seat surfaces shall be adjusted by shimming to assure firm and even bearing. Two 1/8" fabric adjusting shims of the dimensions of the Exterior Bearing Pad shall be provided for each bearing.
- Keyway surfaces shall be cleaned to remove form oil or other bond breaking material prior to shipment of the beams. Cleaning shall be done by sandblasting the keyway areas between top of the beam and the bottom edge of the key.
- Corrosion Inhibitor, as covered in the Special Provisions, shall be used in the concrete for precast prestressed concrete deck beams.
- Required Release Strength, f'cl, shall be 4000 p.s.i.
- See sheet 4 of 7 for location of rail anchors.
- Bridge rail Inserts shall be cast in precast beams.

**BILL OF MATERIAL**

Precast Prestressed Conc. Deck Bms. (21" Depth)	Sq. Ft.	1410.8
---	---------	--------



**LIN ENGINEERING, LTD.**

20 N. Chestnut  
 Channahon, Illinois 63229  
 (815) 483-4884 FAX (815) 483-4706  
 Designed By: DLS Checked By: MTH Drawn By: JND  
 Date: 07/05 File: 0820034.dwg

REVISIONS	
NAME	DATE

ILLINOIS DEPARTMENT OF TRANSPORTATION

**SUPERSTRUCTURE DETAILS - 2**

**MOLINE ROAD OVER ZUMA CREEK**

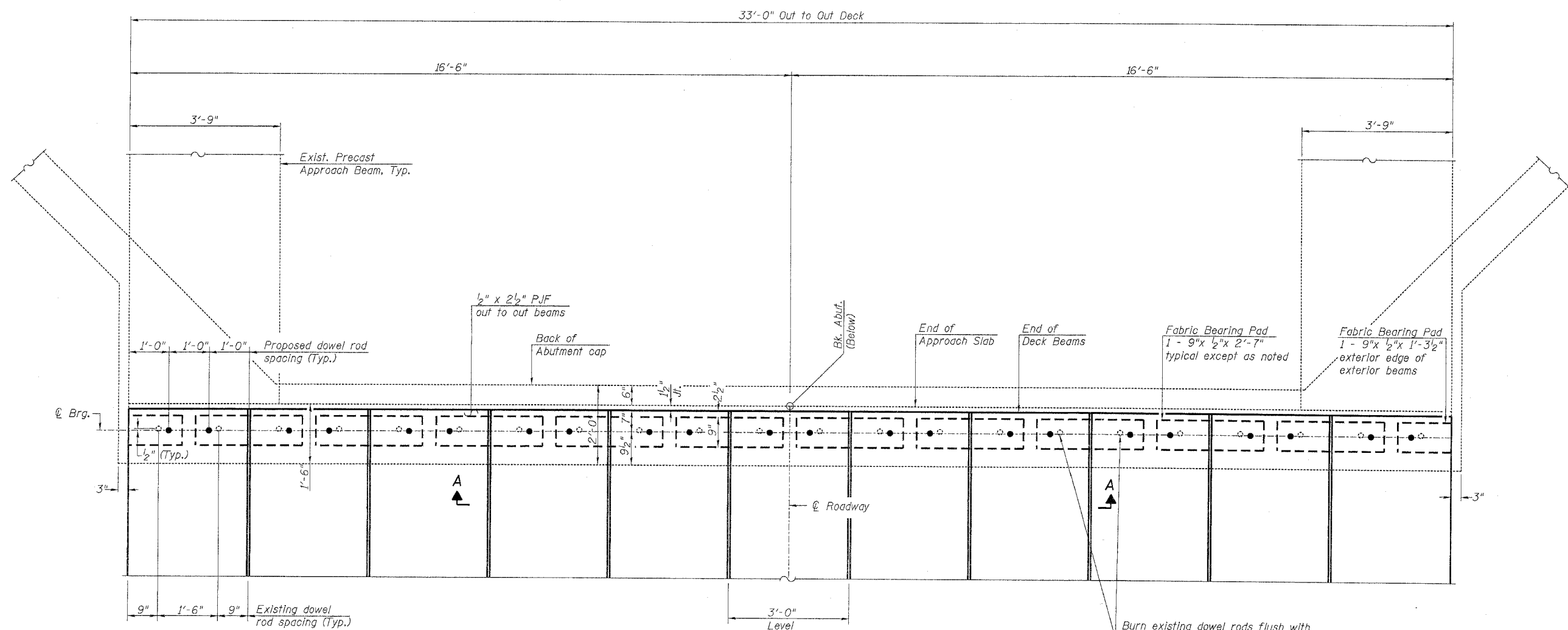
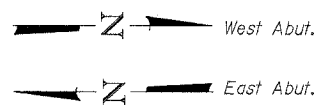
**F.A.S. ROUTE 203-SECTION 9BR-M**

**ROCK ISLAND COUNTY**

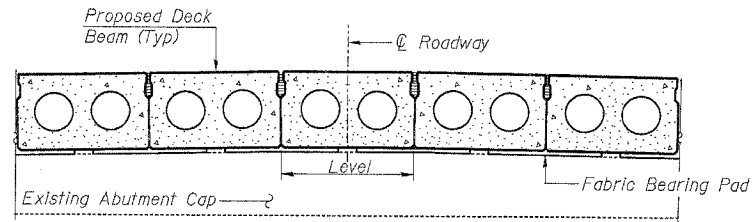
**STATION 92+92.75**

**STRUCTURE NO. 081-0034**

8/5/2005 11:32:49 AM ...0810034.dwg



**ABUTMENT PLAN**  
(Bituminous Surface not shown)



**SECTION A-A**  
(Bituminous surface and dowel rods not shown.)

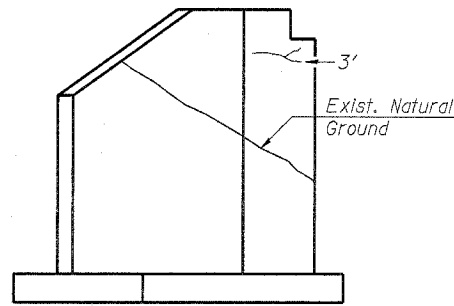
**LIN ENGINEERING, LTD.**  
210 N. DuSable  
Chicago, Illinois 60629  
Tel: 465-4666 Fax: 671-1774  
Designed By: DLS Checked By: MTH Drawn By: JMD  
Date: 07/05 File: 0810034.DGN

REVISIONS	
NAME	DATE

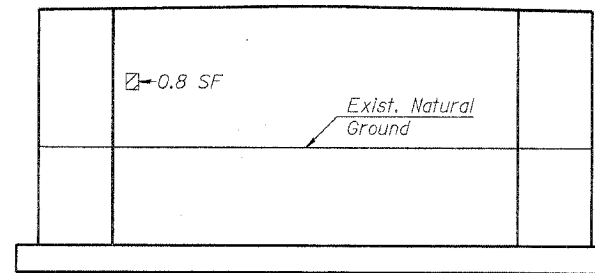
ILLINOIS DEPARTMENT OF TRANSPORTATION  
**ABUTMENTS**  
MOLINE ROAD OVER ZUMA CREEK  
F.A.S. ROUTE 203-SECTION 9BR-M  
ROCK ISLAND COUNTY  
STATION 92+92.75  
STRUCTURE NO. 081-0034

8/5/2005 11:32:57 AM ...\\0810034.dgn

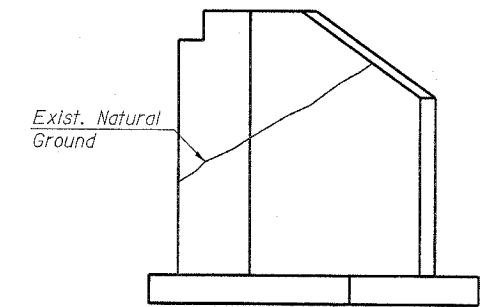




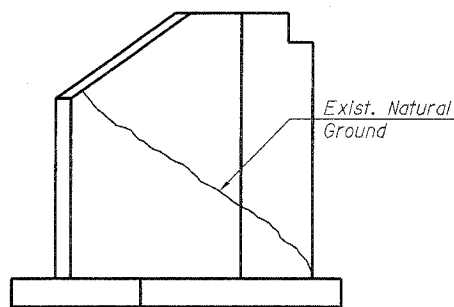
SOUTHWEST WINGWALL



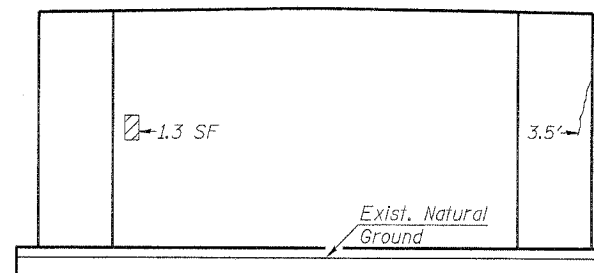
WEST ABUTMENT



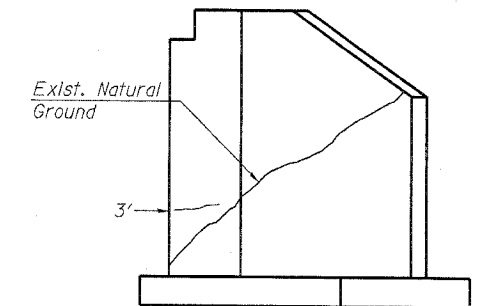
NORTHWEST WINGWALL



NORTHEAST WINGWALL



EAST ABUTMENT



SOUTHEAST WINGWALL

**BILL OF MATERIAL**

Item	Unit	Total
Epoxy Crack Sealing	Foot	9.5
Polymer Modified Portland Cement Mortar	Sq. Ft.	2.1

**LEGEND**

- 3' Epoxy Crack Sealing
- ▨ Polymer Modified Portland Cement Mortar

Notes:  
The quantities shown are for estimating purposes only. Area to be repaired will be determined by the Engineer at the time of Construction. Actual repair locations shall be shown on the as-built plans.

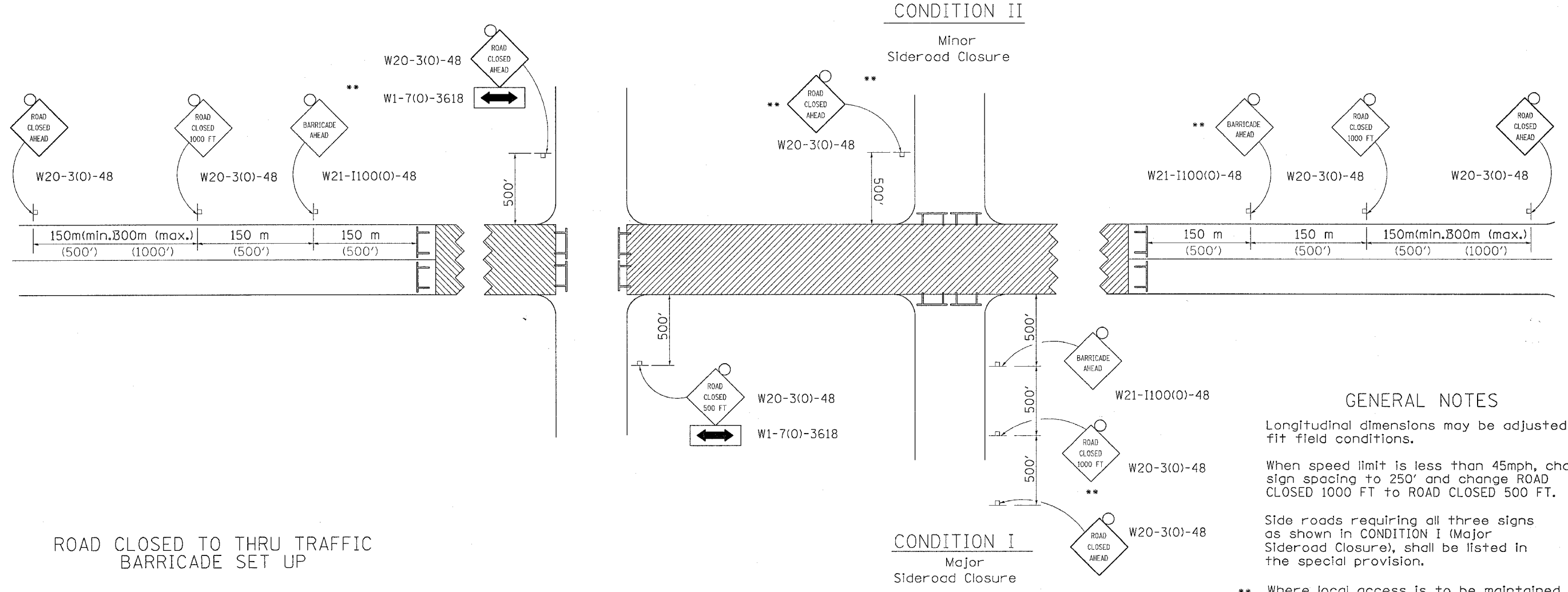
**LIN ENGINEERING, LTD.**  
200 W. Chestnut  
1271-1281-1282  
Chattanooga, Illinois 62629  
FAX 618-423-1128  
Developed By: DLS Checked By: MTH Drawn By: JM  
Date: 07/05 File: 0810034.DGN

REVISIONS	
NAME	DATE

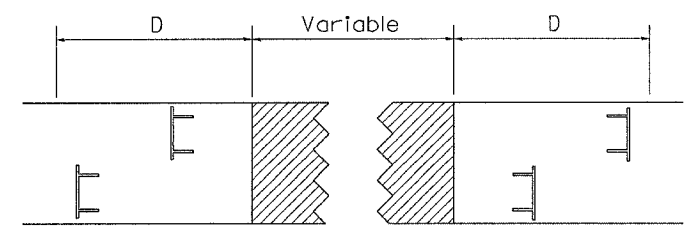
ILLINOIS DEPARTMENT OF TRANSPORTATION  
**CONCRETE REPAIR**  
MOLINE ROAD OVER ZUMA CREEK  
F.A.S. ROUTE 203-SECTION 9BR-M  
ROCK ISLAND COUNTY  
STATION 92+92.75  
STRUCTURE NO. 081-0034

F.A.S. RTE.	SECTION	COUNTY	TOTAL SHEETS	SHEET NO.
203	9BR-4	ROCK ISLAND	21	18
STA.		TO STA.		
FED. ROAD DIST. NO.		ILLINOIS FED. AID PROJECT		

# TRAFFIC CONTROL FOR ROAD CLOSURE






ROAD CLOSED TO THRU TRAFFIC BARRICADE SET UP



Type III Barricades and R11-4-4830 signs shall be as shown in "Road Closed To All Thru Traffic" detail on Highway Standard 702001. If the distance "D" exceeds 600 m (2000') an additional set of barricades and R11-4-4830 shall be placed at each end of the work area.

**SYMBOLS**

-  Work area
-  Type III Barricade with Flashers
-  Sign with flashing light

**GENERAL NOTES**

- Longitudinal dimensions may be adjusted to fit field conditions.
- When speed limit is less than 45mph, change sign spacing to 250' and change ROAD CLOSED 1000 FT to ROAD CLOSED 500 FT.
- Side roads requiring all three signs as shown in CONDITION I (Major Sideroad Closure), shall be listed in the special provision.
- \*\* Where local access is to be maintained, barricades are to be set up as shown in Road Closed to thru traffic.
- Type III Barricades and R11-2-4830 signs shall be as shown in "Road Closed To All Traffic" detail on Highway Standard 702001.

All dimensions are in millimeters (inches) unless otherwise shown.

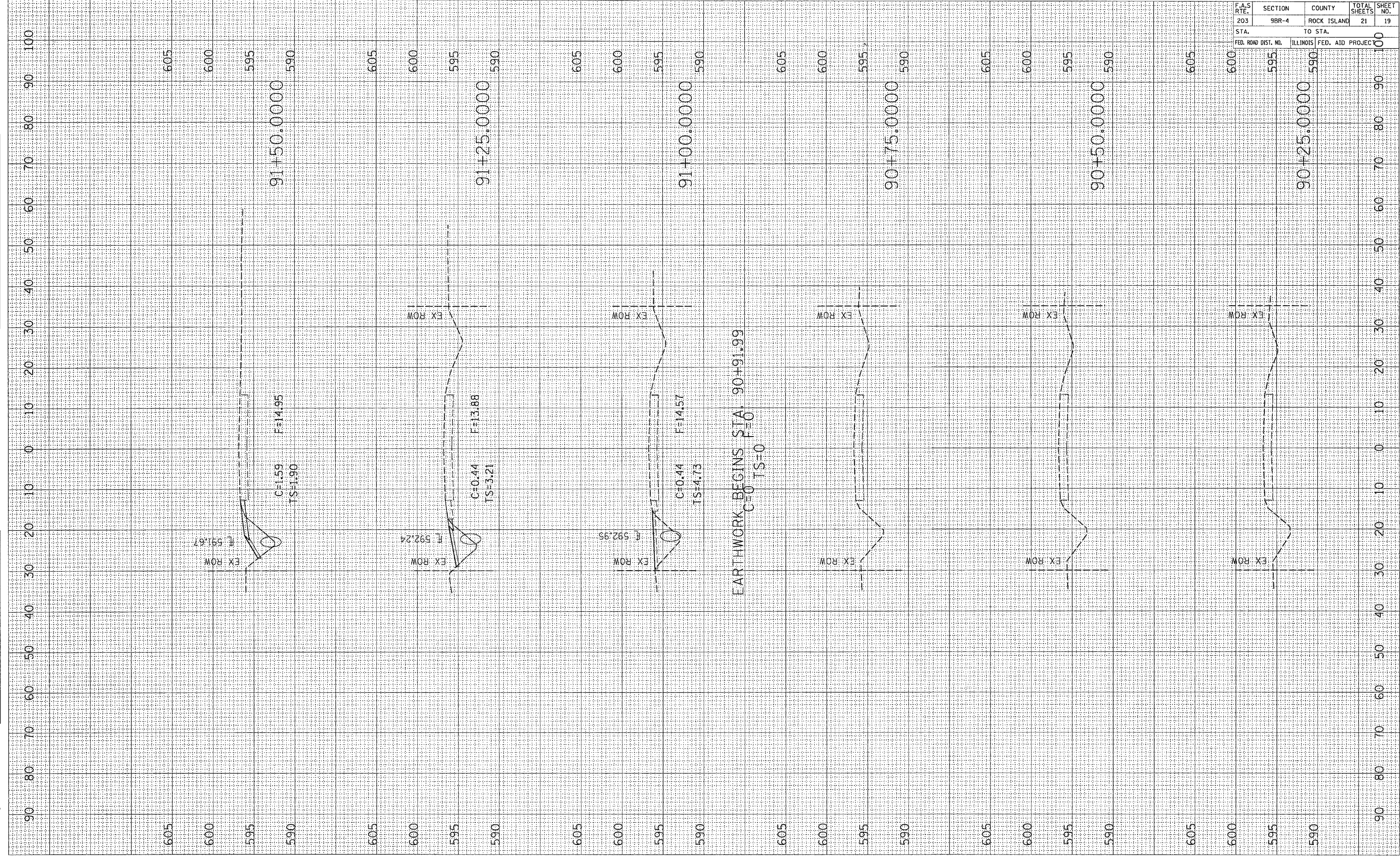
TYPICAL APPLICATION FOR ROAD CLOSURE

PLOT DATE = Fri, Sep 02, 11:47:05, 2005  
 FILE NAME = 5632003.dgn  
 PLOT SCALE = 5632003 / IN.  
 REFERENCE = REF\*

PLOT DATE = Fri Sep 02 11:47:08 2005  
 FILE NAME = c:\projects\2005\901\805290.dwg  
 PLOT SCALE = 10.0000 / IN.  
 USER NAME = rjg

ORIGINAL SURVEY BY DATE  
 SURVEYED BY DATE  
 NOTE BOOK NO.  
 TEMPLATE AREAS CHECKED

FINAL SURVEY BY DATE  
 SURVEYED BY DATE  
 NOTE BOOK NO.  
 TEMPLATE AREAS CHECKED



CONTRACT NO. 64719

F.A.S. RTE.	SECTION	COUNTY	TOTAL SHEETS	SHEET NO.
203	9BR-4	ROCK ISLAND	21	19

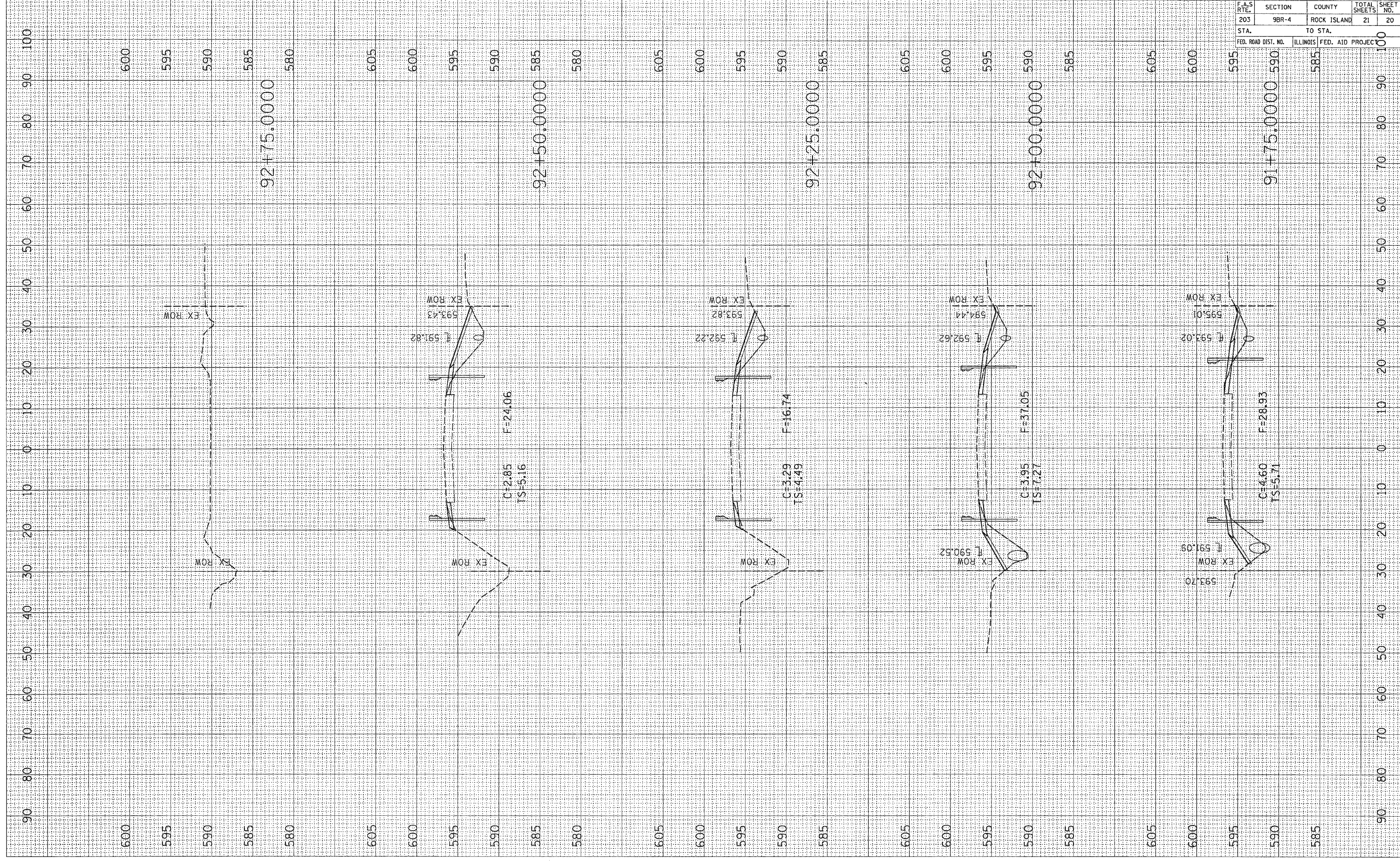
STA.	TO STA.
FED. ROAD DIST. NO.	ILLINOIS FED. AID PROJEC

PLOT DATE = Fri Sep 02 11:47:01 2005  
 FILE NAME = c:\p\projects\2005\901\888\901\888.dwg  
 PLOT SCALE = 1/8" = 1' / IN.  
 USER NAME = pgs1

ORIGINAL SURVEY PLOTTED  
 SURVEY PLOTTED  
 NOTE BOOK AREAS CHECKED  
 NO. AREAS CHECKED

FINAL SURVEY PLOTTED  
 NOTE BOOK AREAS CHECKED  
 NO. AREAS CHECKED

BY \_\_\_\_\_ DATE \_\_\_\_\_



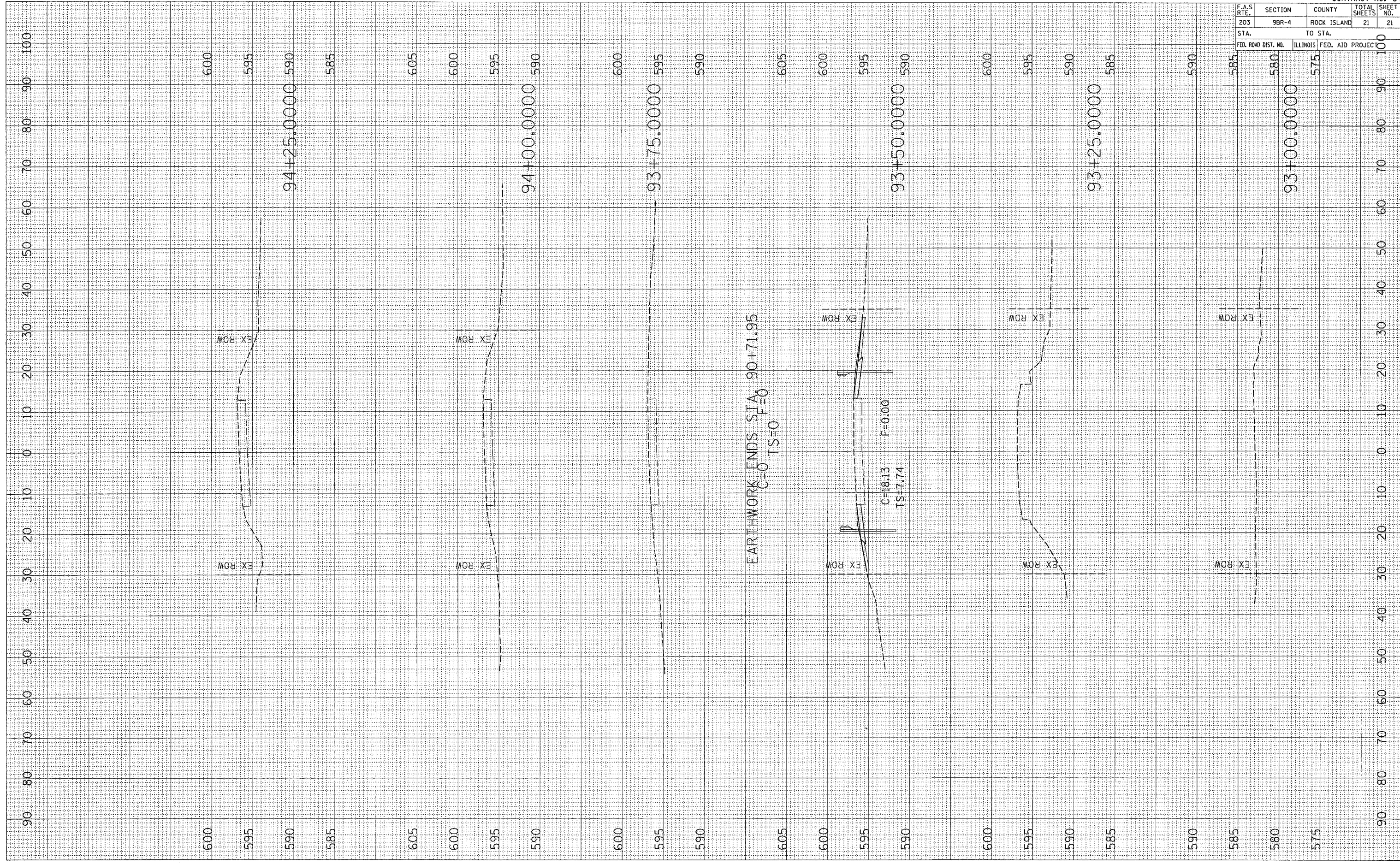
CONTRACT NG64719				
F.A.S. RTE.	SECTION	COUNTY	TOTAL SHEETS	SHEET NO.
203	9BR-4	ROCK ISLAND	21	20
STA.		TO STA.		
FED. ROAD DIST. NO.		ILLINOIS	FED. AID PROJECT	

PLOT DATE = Fri Sep 22 11:47:09 2005  
 FILE NAME = c:\projects\2005\981\981.dwg  
 PLOT SCALE = 18.0000' / IN.  
 USER NAME = feggs01

ORIGINAL SURVEY PLOTTED  
 SURVEY PLOTTED  
 NOTE BOOK AREAS CHECKED  
 NO.

FINAL SURVEY PLOTTED  
 SURVEY PLOTTED  
 NOTE BOOK AREAS CHECKED  
 NO.

BY: \_\_\_\_\_ DATE: \_\_\_\_\_  
 BY: \_\_\_\_\_ DATE: \_\_\_\_\_



CONTRACT NO. 64719

F.A.S. RTE.	SECTION	COUNTY	TOTAL SHEETS	SHEET NO.
203	9BR-4	ROCK ISLAND	21	21
STA. TO STA.		ILLINOIS FED. AID PROJEC		

FED. ROAD DIST. NO. 580 TO 575