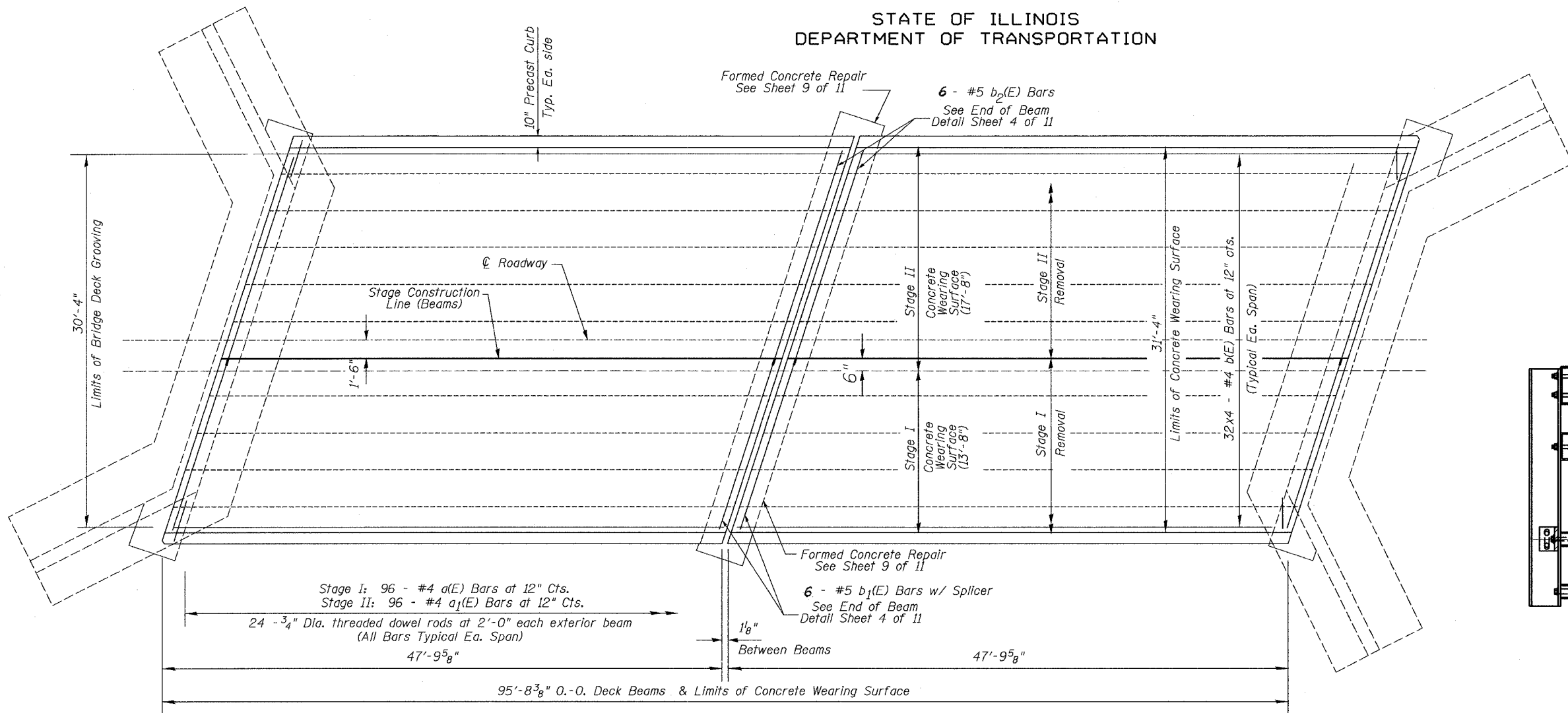


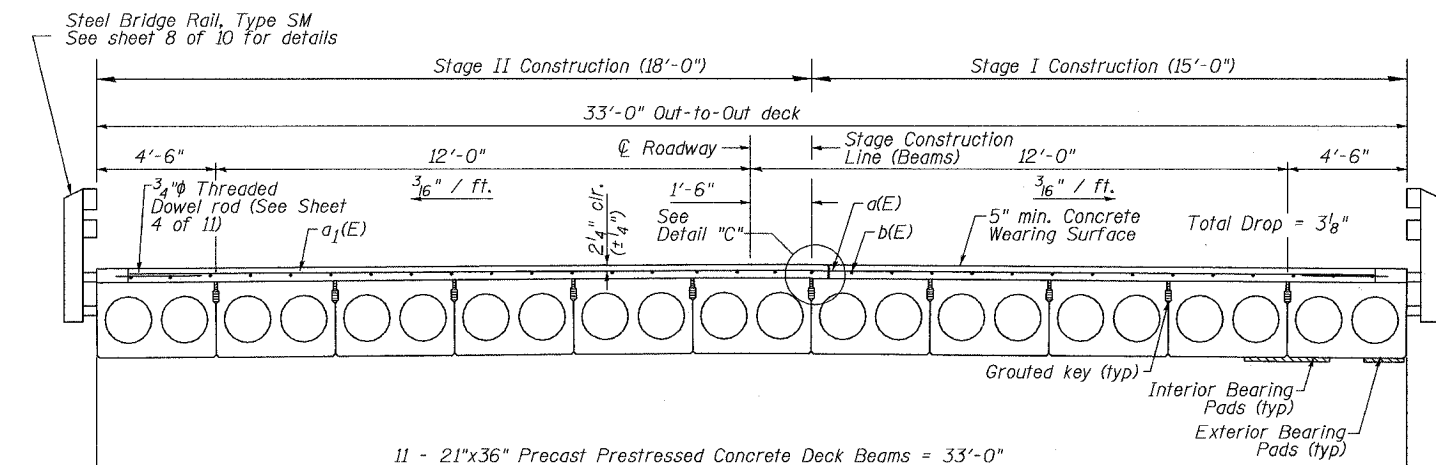
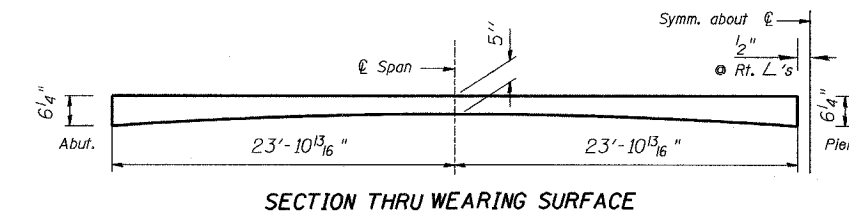
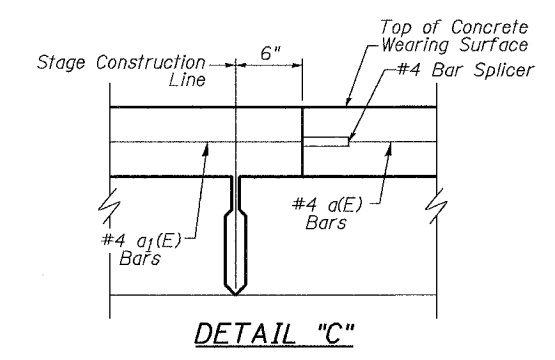
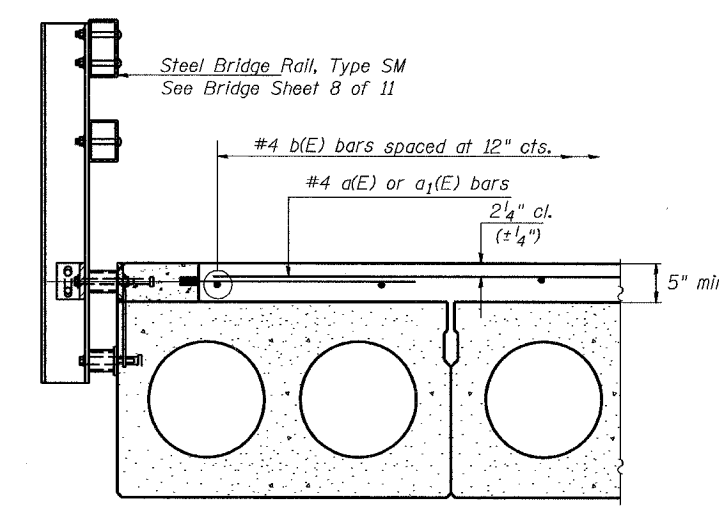
STATE OF ILLINOIS
DEPARTMENT OF TRANSPORTATION

ROUTE NO.	SECTION	COUNTY	TOTAL SHEETS	SHEET NO.	SHEET NO. 3
S.B.L.	*	Ogle	40	18	11 SHEETS
F.A.P.					
FED. ROAD DIST. NO. 7	ILL. INDS.	FED. AID PROJECT-			

* Section 119BR-3 Contract #64A47



See Bridge Sheet 5 of 11 for Sections thru Pier & Abutments



BILL OF MATERIAL - SUPERSTRUCTURE

Bar	Size	Number	Length	Shape
a(E)	#4	96	14'-7"	---
a ₁ (E)	#4	96	19'-8"	---
b(E)	#4	128	25'-0"	---
b ₁ (E)	#5	6	15'-5"	---
b ₂ (E)	#5	6	20'-6"	---
ITEM		UNIT	TOTAL	
Removal of Existing Superstructures		Each	1	
Bridge Deck Grooving		Sq Yd	323	
Concrete Wearing Surface		Sq Yd	333	
* Bar Splacers		Each	102	
Reinforcement Bars (Epoxy Coated)		Pound	4560	

DECK OVERLAY DETAILS
F.A.P. 553 (IL 72)
OVER STILLMAN CREEK
SECTION 119BR-3
OGLE COUNTY
STR. NO. 071-0042

DESIGNED	SB
CHECKED	RB
DRAWN	DB, BS
CHECKED	SB

MIN. BAR LAP
#4 Bar = 1'-4"

Reinforcement bars designated (E) shall be epoxy coated.
Bars indicated thus 32x4 - #4 etc. indicates 32 lines of bars with 4 lengths per line.
*See Bar Splicer Assembly Details Br. Sheet 11 of 11.