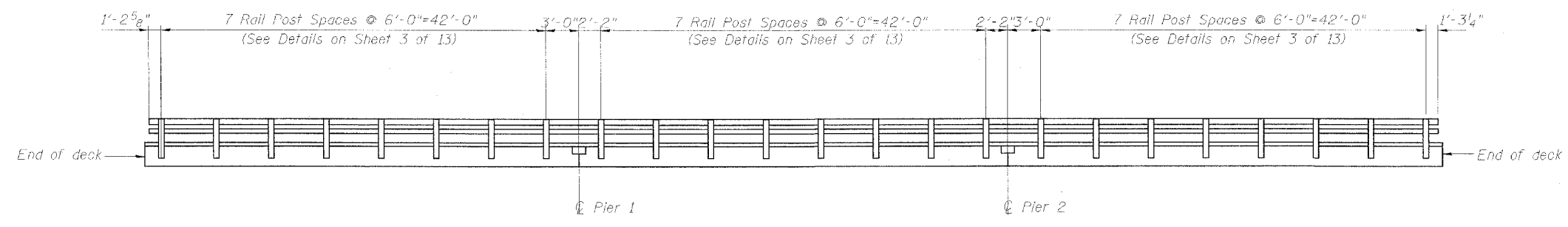
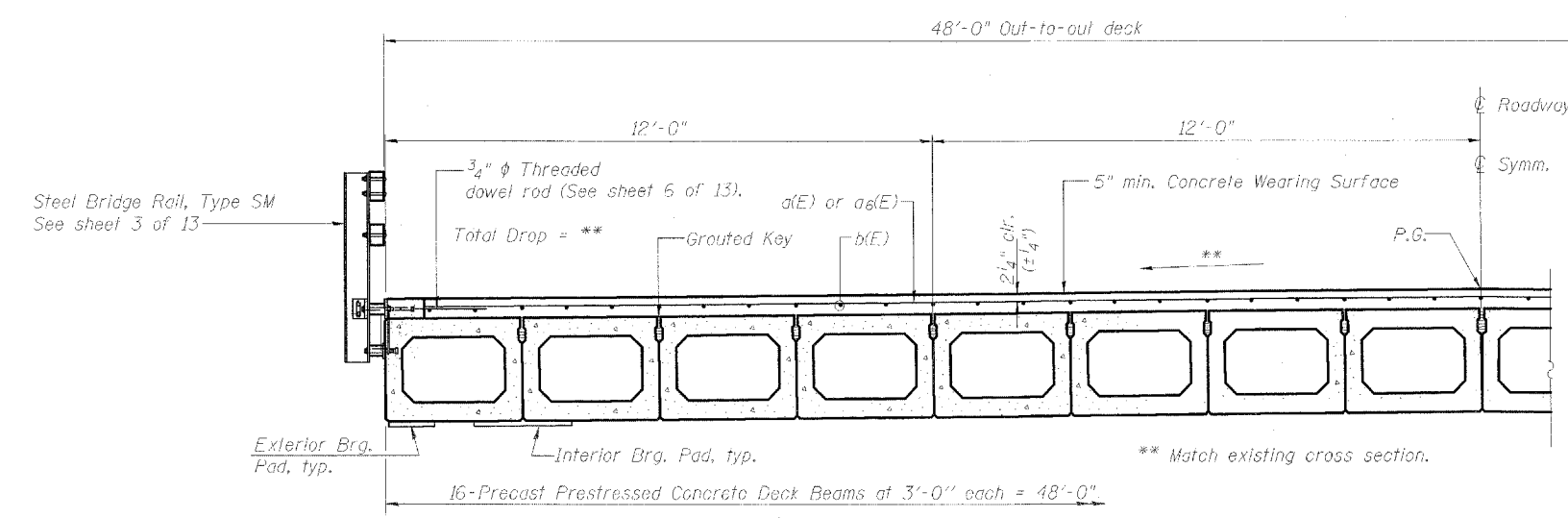


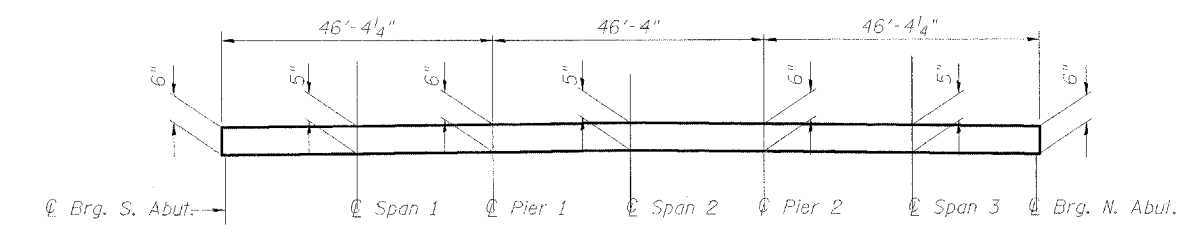
Contract #64A50



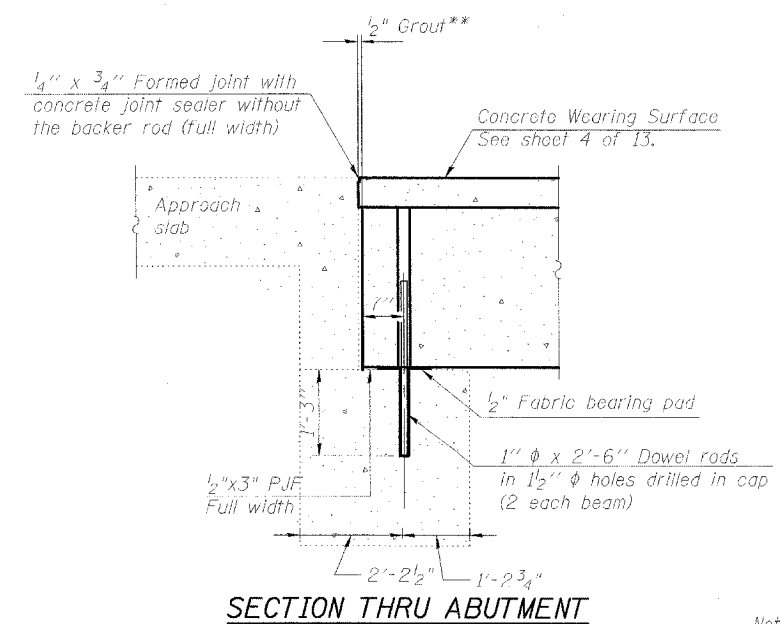
RAIL POST SPACING



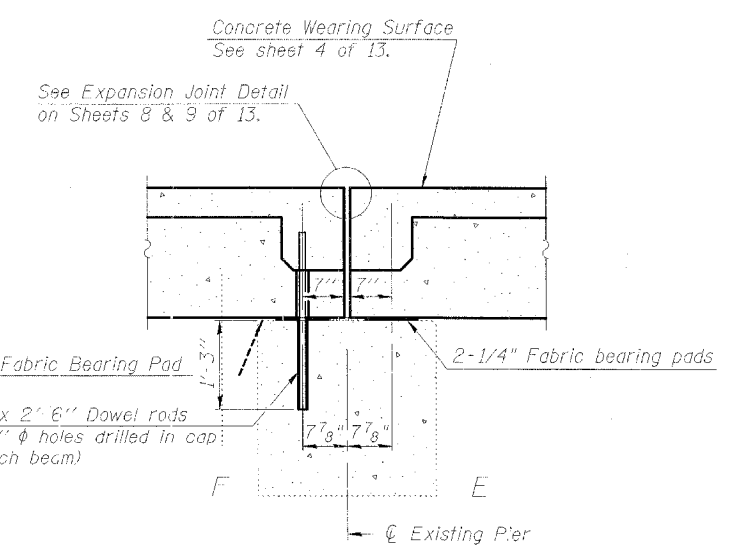
HALF CROSS SECTION
(Looking North)



REINFORCED CONCRETE WEARING SURFACE PROFILE
(Concrete wearing surface along C/L of Roadway)



SECTION THRU ABUTMENT



SECTION THRU PIER 2

**1/2" Joint shall be filled with non-shrink grout. 1/2" dimension may vary plus or minus to accommodate tolerance in beam lengths.

Notes:
After beams have been erected, holes shall be drilled into substructure and anchor dowels placed. Dowel holes shall be filled with non-shrink grout to top of beam and allowed to cure min. 24 hrs. prior to grouting the shear keys.
All horizontal dimensions are at right angles to beam ends.
See sheet 6 of 13 for bearing pad details.
See sheet 7 of 13 for Section thru Pier 1.

SUPERSTRUCTURE DETAILS

F.A.P. ROUTE 324 (IL 23)
SECTION 26 VBR-1
DEKALB COUNTY
STATION 1773+30.24
STRUCTURE NO. 019-0005

CHAMPAIGN, ILLINOIS
CHICAGO, ILLINOIS
EVANSVILLE, INDIANA
INDIANAPOLIS, INDIANA
KENOSHA, WISCONSIN
SPRING GREEN, WISCONSIN

Clark Dietz

REVISIONS		DRAWING NUMBER
NAME	DATE	
		S-5

DESIGNED BY: S.L.D. PROJECT NO. 102301
DRAWN BY: MEW DATE: 6/05
CHECKED BY: S.C.J.
APPROVED BY: H.M.
ACTIVITY: BRIDGES