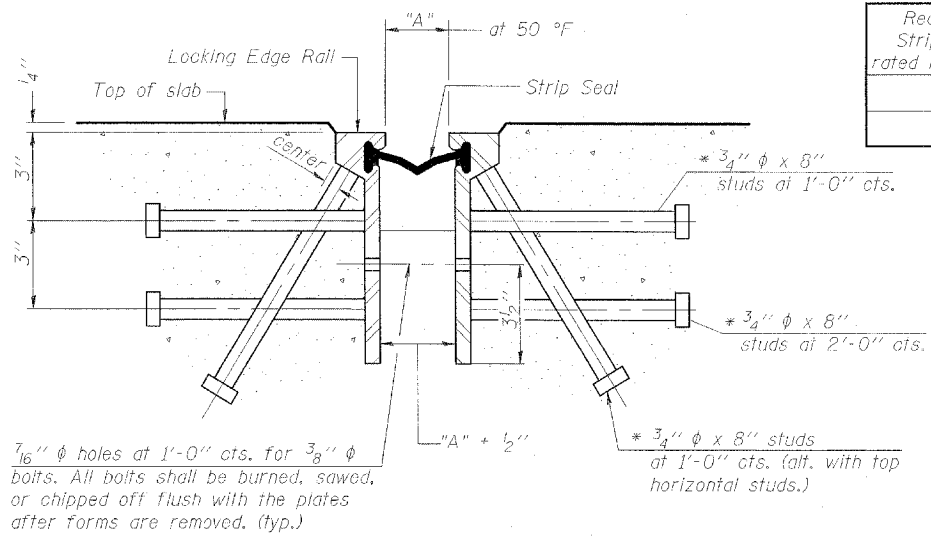
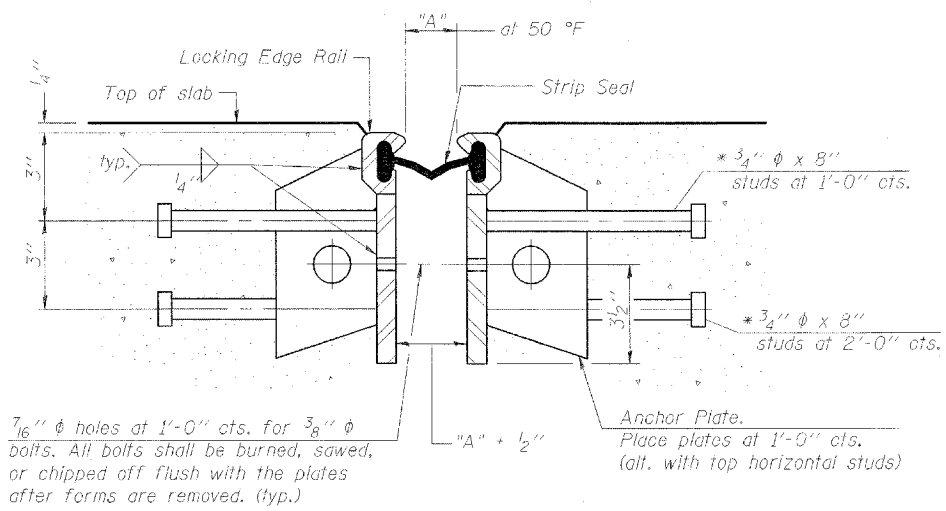


Contract #64A50



Required Strip Seal rated movement	"A"	Location
1"	1 1/8"	Pier 2
2"	1 3/4"	Pier 1

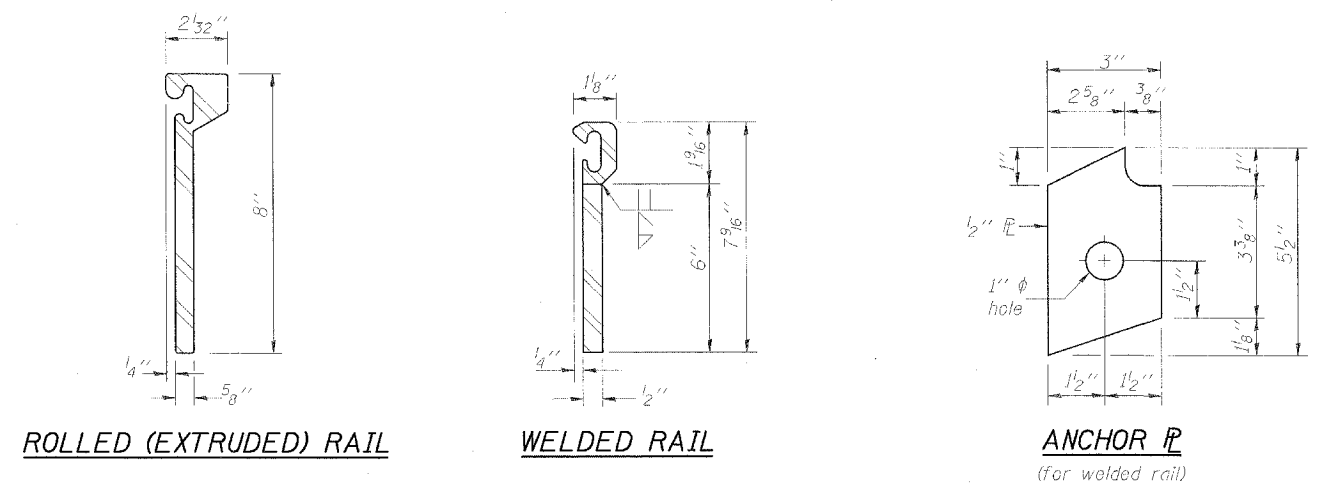


GENERAL NOTES

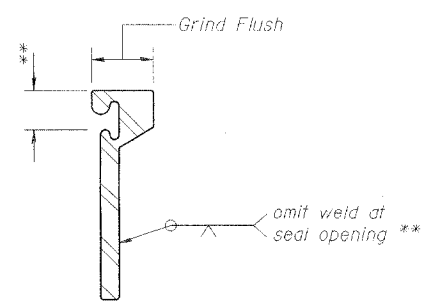
The strip seal shall be made continuous and shall have a minimum thickness of 1/4". The configuration of the strip seal shall match the configuration of the Locking Edge Rails.
 The height and thickness of the Locking Edge Rails shown are minimum dimensions. The actual configuration of the Locking Edge Rails and matching strip seal may vary from manufacturer to manufacturer. Flanged edge rails will not be allowed.
 Locking Edge Rails may be spliced at slope discontinuities and stage construction joints.
 The manufacturer's recommended installation methods shall be followed.
 The joint opening and deck dimensions detailed on the superstructure are based on a preformed joint seal. If the contractor elects to use the alternate strip seal joint, the opening and deck dimensions shall be modified according to the dimensions detailed on this sheet. Required modifications shall be made at no additional cost to the State.

SECTION THRU ROLLED RAIL EXP. JOINT
(576 Studs Required)

SECTION THRU WELDED RAIL EXP. JOINT
(344 Studs Required)
(232 Anchor Plates Required)



LOCKING EDGE RAILS



LOCKING EDGE RAIL SPLICE
The inside of the locking edge rail groove shall be free of weld residue.

**BRIDGE JOINT SYSTEM (EXPANSION)
(ALTERNATE-STRIP SEAL)**

F.A.P. ROUTE 324 (IL 23)
SECTION 26 VBR-1
DEKALB COUNTY
STATION 1773+30.24
STRUCTURE NO. 019-0005

Clark Dietz

CHAMPAIGN, ILLINOIS
CHICAGO, ILLINOIS
EVANSVILLE, INDIANA
INDIANAPOLIS, INDIANA
KENOSHA, WISCONSIN
SPRING GREEN, WISCONSIN

REVISIONS		DATE	DRAWING NUMBER
NAME			
			S-9

E:\Bridge-Joint-System.dgn 8/20/2005 9:35:30 AM