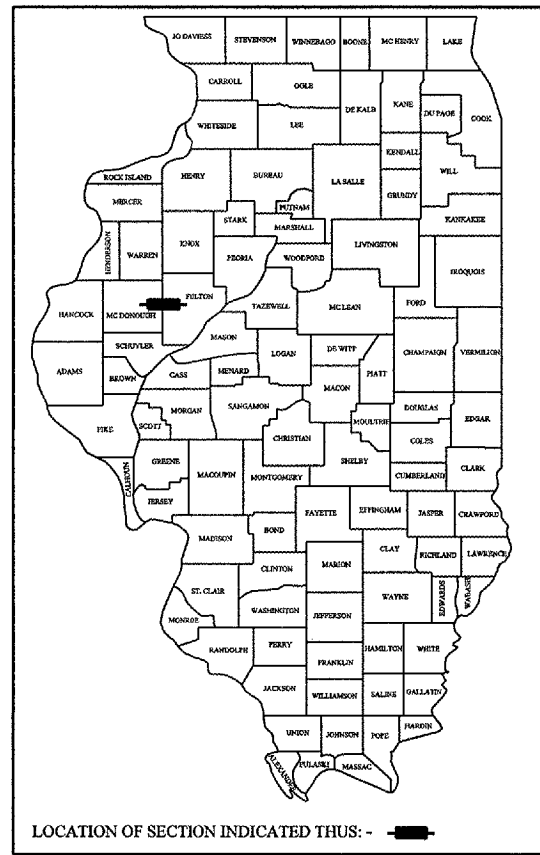


68382

F.A.P.	SECTION	COUNTY	TOTAL SHEETS	SHEET NO.
687	*	McDonough / Fulton	58	1

* D4 CULV EXT/REPAIR 2006

D-94-015-04



STATE OF ILLINOIS
DEPARTMENT OF TRANSPORTATION
DIVISION OF HIGHWAYS
**PROPOSED
HIGHWAY PLANS**
F.A.P. ROUTE 687 (IL. ROUTE 95)
D4 CULV EXT/ REPAIR 2006
McDONOUGH & FULTON COUNTIES
C-94-023-04

INDEX OF SHEETS

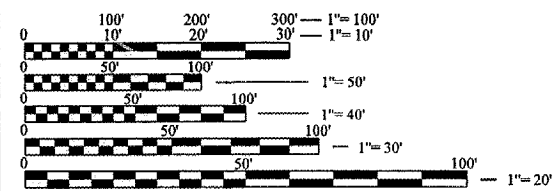
- 1. COVER SHEET
- 2. COMMITMENT & GENERAL NOTES
- 3. STATUS OF UTILITIES
- 4 - 5. SUMMARY OF QUANTITIES
- 6. TYPICAL SECTIONS
- 7 - 10. SCHEDULE OF QUANTITIES
- 11 - 19. EXISTING & PROPOSED PLAN SHEET
- 20 - 22. EROSION CONTROL PLANS
- 23 - 48. CROSS SECTIONS
- 49 - 58. CADD STANDARDS:
 - 205001-D4 542011-D4 635101-D4
 - 281001-D4 542016-D4
 - 542001-D4 630101-D4

LIST OF STANDARDS:

- 280001-02630001-05666001 702001-05
- 542301 630301-03701001-01
- 602401 631011-02701006-02
- 602701 635006-02701201-02
- 604001-02635011-02701301-02

ADT = 1,500
MU = 1.3%
SU = 5.2%

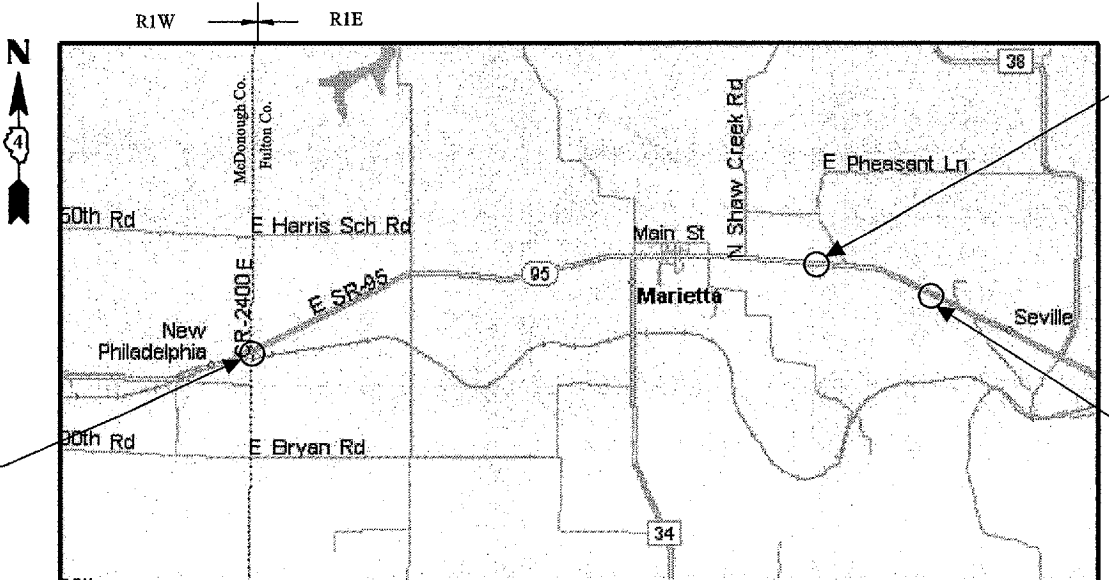
SCALES



FULL SIZE PLANS HAVE BEEN PREPARED USING STANDARD ENGINEERING SCALES. REDUCED SIZED PLANS WILL NOT CONFORM TO STANDARD SCALES. IN MAKING MEASUREMENTS ON REDUCED PLANS, THE ABOVE SCALES MAY BE USED.

J.U.L.I.E.
JOINT UTILITY LOCATION INFORMATION FOR EXCAVATION
1-800-892-0123

CONTRACT NO. 68382
CATALOG NO. 032839-00D



LOCATION 1
STA. 157+25 TO STA. 162+50

LOCATION 2
STA. 349+50 TO STA. 354+00

LOCATION 3
STA. 400+50 TO STA. 405+00

GROSS LENGTH OF SECTION = 24,775.00 FEET = 4.692 Mi
NET LENGTH OF SECTION = 1,425.00 FEET = 0.270 Mi

N.P.D.E.S.
REQUIRED

QC/QA
BITUMINOUS

DESCRIPTION:

This improvement consist of the extention of three cross road culverts, slope repair, installation of guardrail and others related works.

STATE OF ILLINOIS
DEPARTMENT OF TRANSPORTATION
DIVISION OF HIGHWAYS

SUBMITTED SEP 2, 2005

[Signature]
DEPUTY DIRECTOR OF HIGHWAYS, REGION ENGINEER

October 14, 2005
[Signature]
ENGINEER OF DESIGN AND ENVIRONMENT

October 14, 2005
[Signature]
DEPUTY DIRECTOR OF HIGHWAYS, CHIEF ENGINEER

PROJECT ENGINEER: M. ADDIS 309-671-3454

DESIGNER: LEONEL CRESPO 309-671-3459