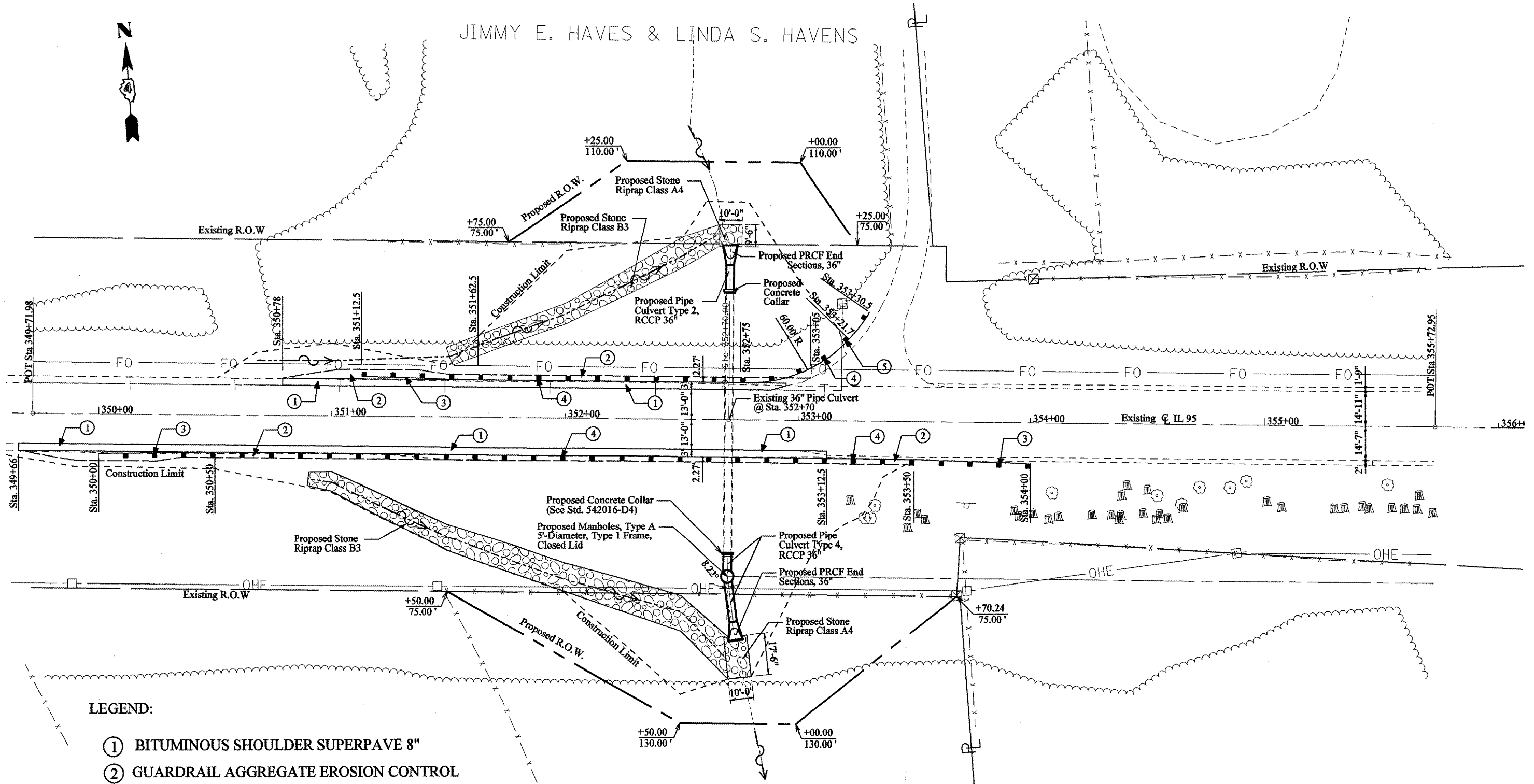


F.A.P. RTE.	SECTION	COUNTY	TOTAL SHEETS	SHEET NO.
687		McDonough / Fulton	58	15
STA. TO STA.				
FED. ROAD DIST. NO. ILLINOIS FED. AID PROJECT				
*D4 CULV. EXT. REPAIR 2006				



JIMMY E. HAVES & LINDA S. HAVENS



WILLIAM WRIGHT

LEGEND:

- ① BITUMINOUS SHOULDER SUPERPAVE 8"
- ② GUARDRAIL AGGREGATE EROSION CONTROL
- ③ TRAFFIC BARRIER TERMINAL TYPE 1 SPECIAL (TANGENT)
- ④ STEEL PLATE BEAM GUARDRAIL TYPE A
- ⑤ TRAFFIC BARRIER TERMINAL, TYPE 2
- ⑥ TRAFFIC BARRIER TERMINAL TYPE 1 SPECIAL (FLARED)

REVISIONS	
NAME	DATE

ILLINOIS DEPARTMENT OF TRANSPORTATION

PROPOSED PLANS
LOCATION #2

SCALE: VERT. _____
HORIZ. _____

DATE _____

DRAWN BY _____
CHECKED BY _____