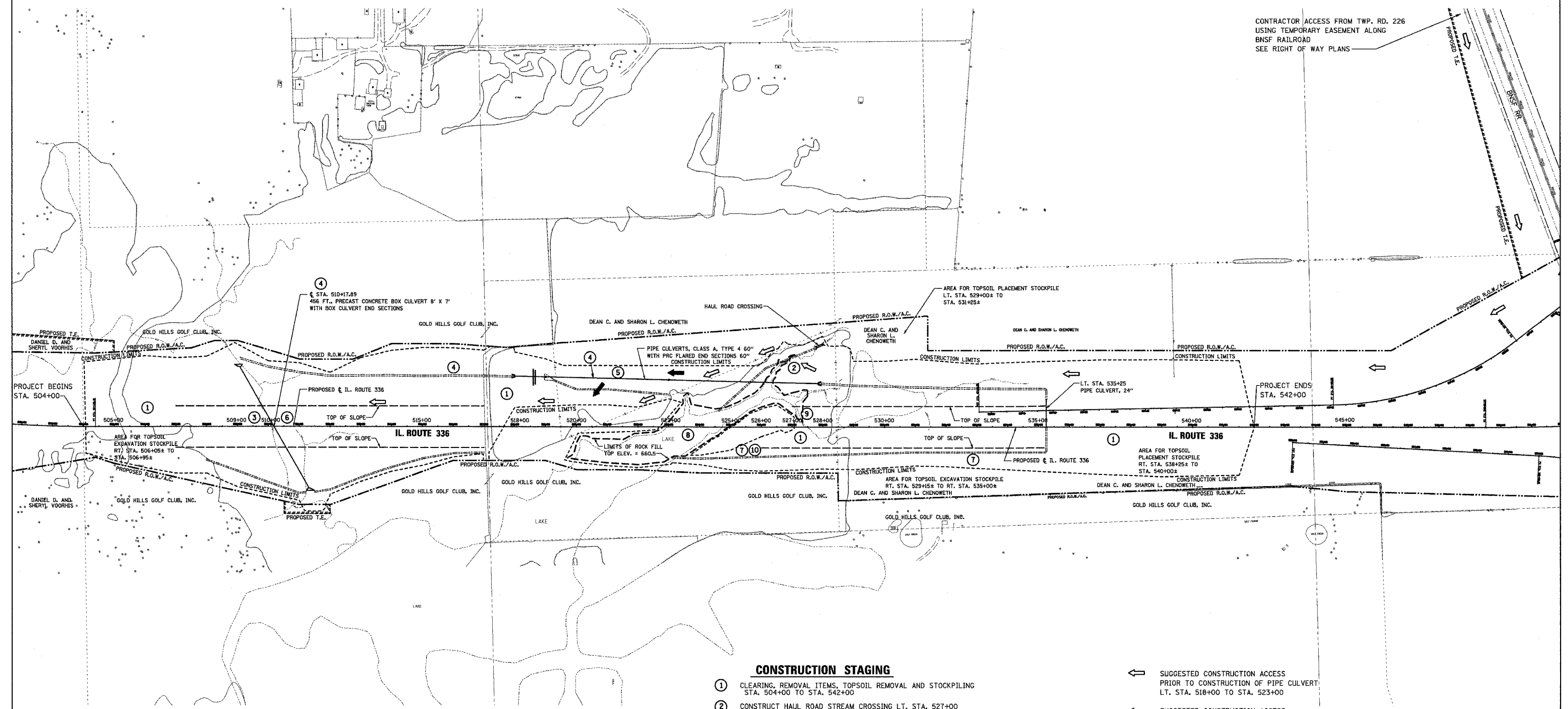


68452

| | | | | |
|---|---------|-----------|--------------|-----------|
| F.A.P. RTE. | SECTION | COUNTY | TOTAL SHEETS | SHEET NO. |
| 315 | (55-2)A | McDONOUGH | 55 | 10 |
| STA. | TO STA. | | | |
| FED. ROAD DIST. NO. 4 ILLINOIS FED. AID PROJECT | | | | |

CONTRACTOR ACCESS FROM TWP. RD. 226
USING TEMPORARY EASEMENT ALONG
BNSF RAILROAD
SEE RIGHT OF WAY PLANS



CONSTRUCTION STAGING

- ① CLEARING, REMOVAL ITEMS, TOPSOIL REMOVAL AND STOCKPILING STA. 504+00 TO STA. 542+00
- ② CONSTRUCT HAUL ROAD STREAM CROSSING LT. STA. 527+00 (ALLOW FOR CONSTRUCTION OF 60" PIPE CULVERT LT. STA. 518+00 TO STA. 523+00)
- ③ UNSUITABLE REMOVAL, DRAINAGE BLANKET AND WICK DRAINS
- ④ BEGIN CONSTRUCTION OF:
 - a) 60" PIPE CULVERT LT. STA. 518+00 TO STA. 523+00
 - b) DITCH LT. STA. 509+00± TO STA. 518+00
 - c) BOX CULVERT STA. 510+17.89
- ⑤ AT COMPLETION OF 60" PIPE CULVERT LT. STA. 523+00, RELOCATE HAUL ROAD TO LT. STA. 522+00± TO COMPLETE 60" PIPE CULVERT LT. STA. 523+00 TO 528+00±
- ⑥ AT COMPLETION OF BOX CULVERT STA. 510+17.89, INSTALL SETTLEMENT PLATFORM AND BEGIN PLACEMENT OF EMBANKMENT
- ⑦ DRAINAGE DITCH AND SEDIMENT BASIN RT. STA. 522+00 TO STA. 535+25
- ⑧ ROCK FILL PLACEMENT LT. STA. 519+75 TO STA. 527+50
- ⑨ COMPLETE ALL REMAINING DRAINAGE WORK, EROSION CONTROL, TOPSOIL PLACEMENT AND SEEDING
- ⑩ FINAL CLEANING OF SEDIMENT BASIN

- ⇐ SUGGESTED CONSTRUCTION ACCESS PRIOR TO CONSTRUCTION OF PIPE CULVERT LT. STA. 518+00 TO STA. 523+00
- ⇐ SUGGESTED CONSTRUCTION ACCESS AFTER CONSTRUCTION OF PIPE CULVERT LT. STA. 518+00 TO STA. 523+00



NOT TO SCALE

| REVISIONS | |
|-----------|------|
| NAME | DATE |
| | |
| | |
| | |
| | |
| | |
| | |
| | |
| | |
| | |
| | |

ILLINOIS DEPARTMENT OF TRANSPORTATION
CONSTRUCTION STAGING PLAN
IL. ROUTE 336
DATE 8/29/05
DRAWN BY DLC
CHECKED BY KMC