

682452

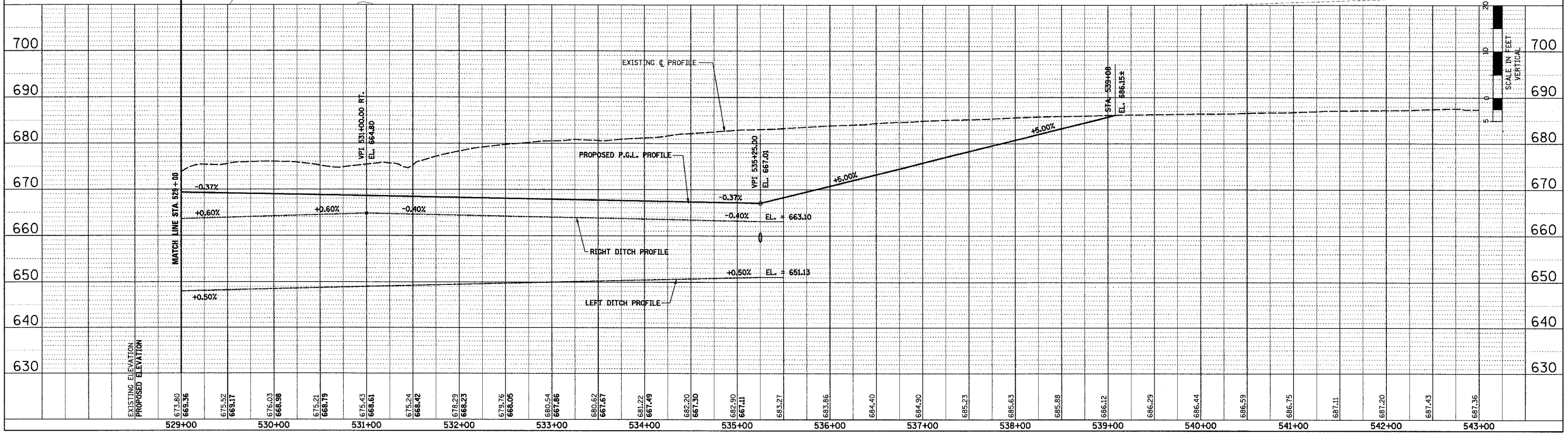
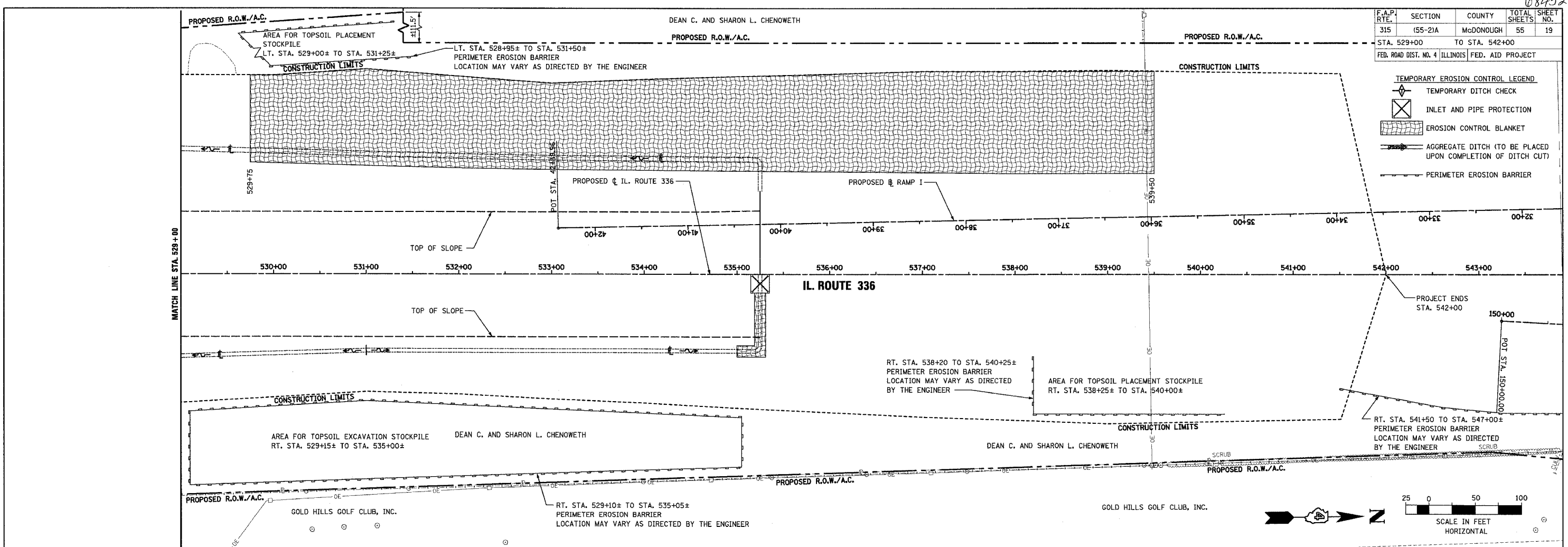
| | | | | |
|---|----------|----------------|--------------|-----------|
| F.A.P. RTE. | SECTION | COUNTY | TOTAL SHEETS | SHEET NO. |
| 315 | (55-21A) | McDONOUGH | 55 | 19 |
| STA. 529+00 | | TO STA. 542+00 | | |
| FED. ROAD DIST. NO. 4 (ILLINOIS) FED. AID PROJECT | | | | |

TEMPORARY EROSION CONTROL LEGEND

- ◇ TEMPORARY DITCH CHECK
- ⊗ INLET AND PIPE PROTECTION
- ▨ EROSION CONTROL BLANKET
- AGGREGATE DITCH (TO BE PLACED UPON COMPLETION OF DITCH CUT)
- PERIMETER EROSION BARRIER

| | | |
|----------------|----------|------|
| PLAN | SURVEYED | DATE |
| NO. | BY | |
| NOTE BOOK NO. | CHECKED | |
| CADD FILE NAME | DATE | |

| | | |
|--------------------------|----------|------|
| PROFILE | SURVEYED | DATE |
| NO. | BY | |
| NOTE BOOK NO. | CHECKED | |
| STRUCTURE NOTATIONS CHRD | DATE | |



EROSION CONTROL PLAN AND PROFILE - IL. ROUTE 336 - STA. 529+00 TO STA. 542+00

3/25/2005 2:52:41 PM