

F.A.P. ROUTE	SECTION	COUNTY	TOTAL SHEETS	SHEET NO.
804	25R,TS	CHAMPAIGN	19	1

D-95-023-05
CONTRACT # 70476

STATE OF ILLINOIS
DEPARTMENT OF TRANSPORTATION
DIVISION OF HIGHWAYS
**PLANS FOR PROPOSED
HIGHWAY IMPROVEMENT**

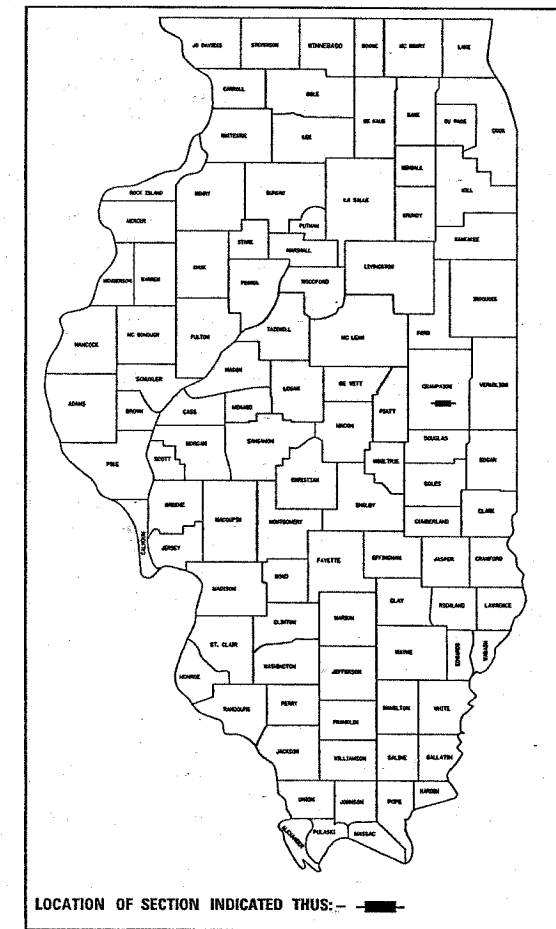
FOR INDEX OF SHEETS, SEE SHEET NO. 2
FOR SUMMARY OF QUANTITIES, SEE SHEET NO. 3

PLAN: 1" = 30'
PROFILE HORIZ.: N.A.
PROFILE VERT.: N.A.
CROSS SECTIONS - N.A.

**F.A.P. ROUTE 804 (US RTE 45)
SECTION 25R,TS
CHAMPAIGN COUNTY
PROJECT ACHS-0804 (185)**

C-95-023-05

INTERSECTION IMPROVEMENT & TRAFFIC SIGNAL MODERNIZATION



DESIGNED BY: JEFF ALLEN PROJECT ENGINEER: SCOTT NEIHART (217) 465 - 4181

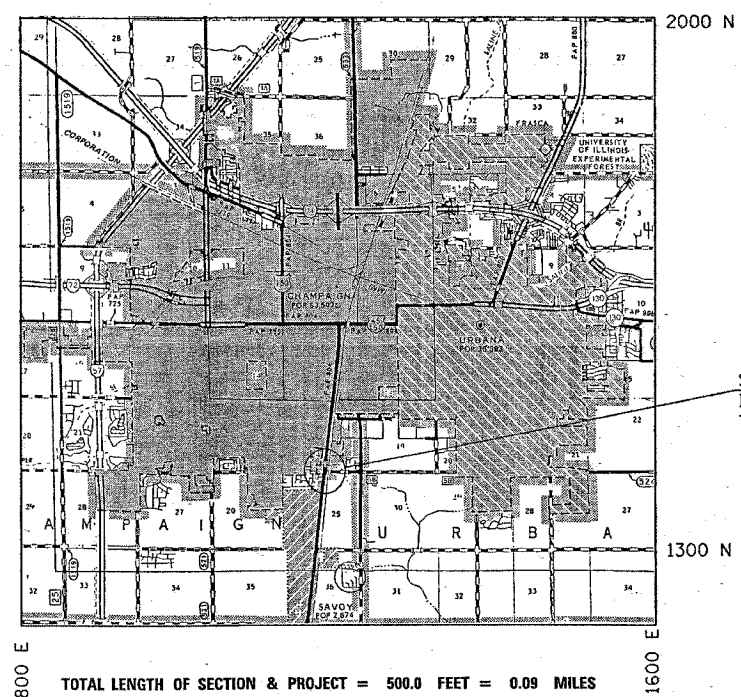
DESIGN TRAFFIC

2005	21,000 ADT
2025	27,800 ADT
PU	27,352 ADT
SU	403 ADT
MU	45 ADT

DESIGN PERIOD 20

% PU	98.39
% SU	1.45
% MU	0.16
TRAFFIC FACTOR =	
SN =	NA

**DESIGN DESIGNATION
N.A.**



TOTAL LENGTH OF SECTION & PROJECT = 500.0 FEET = 0.09 MILES
NET LENGTH OF SECTION & PROJECT = 500.0 FEET = 0.09 MILES

STATE OF ILLINOIS
DEPARTMENT OF TRANSPORTATION
DIVISION OF HIGHWAYS

SUBMITTED: AUG 30 20 09
REGIONAL ENGINEER

EXAMINED: October 14 20 05
Mike Rine
ENGINEER OF DESIGN AND ENVIRONMENT

APPROVED: October 14 20 05
Eric S. Ham
DEPUTY DIRECTOR, DIVISION OF HIGHWAYS

FOR UNDERGROUND UTILITY
LOCATIONS CALL
TOLL FREE J.U.L.I.E. TELEPHONE NO.
1-800-892-0123
CHAMPAIGN TOWNSHIP

CONTRACT NO. 70476

F.A.P. ROUTE 804 SECTION 25R,TS CHAMPAIGN COUNTY

PRINTED BY AUTHORITY OF THE STATE OF ILLINOIS

F.A.P. RTE.	SECTION	COUNTY	TOTAL SHEETS	SHEET NO.
804	25B.IS	CHAMPAIGN	19	2

GENERAL NOTES

G. N. -100
ENGLISH UNITS OF MEASUREMENT SHALL GOVERN OVER AND SUPERSEDE ANY METRIC UNITS SHOWN IN THIS CONTRACT. WHERE INCLUDED, METRIC UNITS ARE FOR INFORMATION ONLY.

G. N. -105.07B
EXISTING STATE-OWNED AND MAINTAINED UTILITY LINES ARE SHOWN ON THE PLANS TO INDICATE THEIR PRESENCE AND APPROXIMATE LOCATION. THE CONTRACTOR SHALL SECURE AN APPROVED LOCATING FIRM TO LOCATE STATE-OWNED UTILITIES PRIOR TO COMMENCING ANY EXCAVATION IN THE VICINITY OF THESE LINES IN ACCORDANCE TO SECTION 803 OF THE STANDARD SPECIFICATIONS. SHOULD ANY OF THE LINES BE DAMAGED BY THE CONTRACTOR'S OPERATION, THE CONTRACTOR SHALL REPAIR THEM TO THE SATISFACTION OF THE ENGINEER AT NO COST TO THE STATE.

ALSO THERE MAY BE UTILITIES PRESENT WHICH WERE INSTALLED BY THE STATE BUT ARE MAINTAINED BY OTHERS (CITY, TOWN, ETC.) THE APPROXIMATE LOCATIONS OF THESE LINES ARE ALSO SHOWN ON THE PLANS ALONG WITH THE NAME OF THE MAINTAINING AGENCY. THE CONTRACTOR SHALL COORDINATE THE LOCATION OF THESE LINES WITH THE LOCAL AGENCY PRIOR TO COMMENCING ANY EXCAVATION OR BORING IN THEIR VICINITY. SHOULD THESE LINES BE DAMAGED BY THE CONTRACTOR'S OPERATIONS, THE CONTRACTOR SHALL REPAIR THEM TO THE SATISFACTION OF, AND AT NO COST TO, THE LOCAL AGENCY AND THE STATE.

G. N. -107.31
UTILITY LINES WERE PLOTTED FROM INFORMATION FURNISHED BY THE VARIOUS UTILITY COMPANIES INVOLVED (QUALITY LEVEL C &/OR QUALITY LEVEL D) AND THE ACCURACY SHOULD BE CONSIDERED APPROXIMATE ONLY.

UTILITY COMPANIES MAY BE ADJUSTING THEIR FACILITIES DURING CONSTRUCTION. THE CONTRACTOR SHALL COOPERATE WITH THESE ORGANIZATIONS WHILE THESE ADJUSTMENTS ARE BEING PERFORMED. J.U.L.I.E. - JOINT UTILITY LOCATION INFORMATION FOR EXCAVATORS SYSTEM (800)892-0123.

G. N. -440B
THE EXISTING TIE BARS BETWEEN THE EXISTING PAVEMENT AND EXISTING MEDIANS, GUTTERS AND/OR COMBINATION CURB AND GUTTERS THAT ARE FOUND SUITABLE FOR REUSE SHALL BE CLEANED, STRAIGHTENED AND INCORPORATED INTO THE NEW CONSTRUCTION. ANY EXISTING TIE BARS THAT ARE FOUND UNSUITABLE TO BE INCORPORATED INTO THE PROPOSED CONSTRUCTION DUE TO EXCESSIVE RUSTING OR DISTRESS SHALL BE REMOVED FLUSH WITH THE FACE OF THE EXISTING CONCRETE AND DISPOSED OF OUTSIDE THE LIMITS OF THE RIGHT-OF-WAY IN ACCORDANCE WITH ARTICLE 202.03 OF THE STANDARD SPECIFICATIONS.

THIS WORK WILL NOT BE PAID FOR SEPARATELY BUT SHALL BE CONSIDERED INCLUDED IN THE VARIOUS REMOVAL PAY ITEMS AND NO ADDITIONAL COMPENSATION WILL BE ALLOWED.

G. N. -1004.01
COARSE AGGREGATE GRADATION CA-10 MAY BE USED WHENEVER COARSE AGGREGATE CA-6 IS SPECIFIED IN THE STANDARD SPECIFICATIONS.

INDEX OF SHEETS

SHEET NO.	ITEM
1	COVER SHEET
2	GENERAL NOTES, INDEX OF SHEETS & STANDARDS IN THE PLANS
3-4	SUMMARY OF QUANTITIES
5-7	EXISTING TYPICAL CROSS SECTIONS
8-9	PROPOSED TYPICAL CROSS SECTIONS
10	SCHEDULE OF QUANTITIES
11	PLAN DETAIL SHEET
12	PAVEMENT MARKING DETAIL SHEET
13	TEMPORARY TRAFFIC SIGNAL INSTALLATION SHEET
14-16	SIGNAL PLAN SHEETS
17	UTILITIES SHEET
18	DETAIL OF CONCRETE MEDIAN, TYPE SB-6 (DOWELLED)
19	DETAIL OF MAST ARM DAMPENING DEVICE

HIGHWAY STANDARDS IN THE PLANS

606301-02	PC CONCRETE ISLANDS AND MEDIANS
701601-04	URBAN LANE CLOSURE, MULTILANE 1W OR 2W WITH NONTRAVERSABLE MEDIAN
701701-04	URBAN LANE CLOSURE, MULTILANE INTERSECTION
701801-03	LANE CLOSURE, MULTILANE 1W OR 2W CROSSWALK OR SIDEWALK CLOSURE
702001-05	TRAFFIC CONTROL DEVICES
720016-01	MAST ARM MOUNTED STREET NAME SIGNS
780001-01	TYPICAL PAVEMENT MARKINGS
814001	CONCRETE HANDHOLES
814006	DOUBLE HANDHOLES
857001	STANDARD PHASE DESIGNATION DIAGRAMS AND PHASE SEQUENCE
877001-02	STEEL MAST ARM ASSEMBLY AND POLE
877011-02	STEEL COMBINATION MAST ARM ASSEMBLY AND POLE
878001-03	CONCRETE FOUNDATION DETAILS
880006	TRAFFIC SIGNAL MOUNTING DETAILS
886001	DETECTOR LOOP INSTALLATIONS
886006	TYPICAL LAYOUT FOR DETECTOR LOOPS
000001-04	STANDARD SYMBOLS, ABBREVIATIONS, AND PATTERNS
001006	DECIMAL OF AN INCH AND OF A FOOT

STATE OF ILLINOIS
DEPARTMENT OF TRANSPORTATION
DISTRICT FIVE

REVIEWED BY: *Dennis L. Maxwell*
DISTRICT ENGINEER OF PROGRAM DEVELOPMENT

DATE: 9/1/2005

EXAMINED BY: *Jeffrey J. Bush*
DISTRICT ENGINEER OF PROJECT IMPLEMENTATION

James Decker
DISTRICT ENGINEER OF BUREAU OF OPERATIONS

SUMMARY OF QUANTITIES

LOCATION OF WORK: F. A. P. 840
US RTE 45 & WINDSOR RD.

CONTRACT NO. 70476				
F.A.P. RTE.	SECTION	COUNTY	TOTAL SHEETS	SHEET NO.
804	25B.15	CHAMPAIGN	.19	3

CODE NO.	ITEM	CONSTRUCTION TYPE CODE:	TOTAL UNIT	URBAN QUANTITY	FAP 804	FAP 804	FAP 804
					90% FEDERAL 10% STATE 1000-1A	90% FEDERAL 5% STATE 5% CITY Y031-1F	100% CITY Y030-1E
20200500	EARTH EXCAVATION (WIDENING)		CU YD	160.0	160.0	160.0	
31101200	SUB-BASE GRANULAR MATERIAL, TYPE B 4"		SQ YD	483.0	483.0	483.0	
35400300	PORTLAND CEMENT CONCRETE BASE COURSE WIDENING 8"		SQ YD	483.0	483.0	483.0	
42001300	PROTECTIVE COAT		SQ YD	554.0	554.0	554.0	
44000500	COMBINATION CURB AND GUTTER REMOVAL		FOOT	546.0	546.0	546.0	
44003100	MEDIAN REMOVAL		SQ FT	1,161.0	1,161.0	1,161.0	
44003800	MEDIAN SURFACE REMOVAL		SQ FT	1,745.0	1,745.0	1,745.0	
60619122	CONCRETE MEDIAN, TYPE SB-6 (DOWELLED)		SQ FT	640.0	640.0	640.0	
67000500	ENGINEERS FIELD OFFICE TYPE B		CAL MO	3.0	3.0	3.0	
67100100	MOBILIZATION		L SUM	1.0	1.0	1.0	
70102630	TRAFFIC CONTROL AND PROTECTION, STANDARD 701601		L SUM	1.0	1.0	1.0	
70102635	TRAFFIC CONTROL AND PROTECTION, STANDARD 701701		L SUM	1.0	1.0	1.0	
70102640	TRAFFIC CONTROL AND PROTECTION, STANDARD 701801		L SUM	1.0	1.0	1.0	
70103815	TRAFFIC CONTROL SURVEILLANCE		CAL DA	9.0	9.0	9.0	
70300210	TEMPORARY PAVEMENT MARKING - LETTERS AND SYMBOLS		SQ FT	125.0	125.0	125.0	
70300220	TEMPORARY PAVEMENT MARKING - LINE 4"		FOOT	2,955.0	2,955.0	2,955.0	
70300240	TEMPORARY PAVEMENT MARKING - LINE 6"		FOOT	443.0	443.0	443.0	
70300260	TEMPORARY PAVEMENT MARKING - LINE 12"		FOOT	223.0	223.0	223.0	
70300280	TEMPORARY PAVEMENT MARKING - LINE 24"		FOOT	131.0	131.0	131.0	
* 78008300	POLYUREA PAVEMENT MARKING TYPE II - LETTERS & SYMBOLS		SQ FT	125.0	125.0	125.0	
* 78008310	POLYUREA PAVEMENT MARKING TYPE II - LINE 4"		FOOT	2,955.0	2,955.0	2,955.0	
* 78008330	POLYUREA PAVEMENT MARKING TYPE II - LINE 6"		FOOT	443.0	443.0	443.0	
* 78008350	POLYUREA PAVEMENT MARKING TYPE II - LINE 12"		FOOT	223.0	223.0	223.0	
* 78008370	POLYUREA PAVEMENT MARKING TYPE II - LINE 24"		FOOT	131.0	131.0	131.0	
78300100	PAVEMENT MARKING REMOVAL		SQ FT	125.0	125.0	125.0	
78300105	PAVEMENT MARKING REMOVAL		FOOT	1,577.0	1,577.0	1,577.0	
80500205	SERVICE INSTALLATION, TYPE B (MODIFIED)		EACH	1.0		1.0	
81012300	CONDUIT IN TRENCH, 1" DIA., PVC		FOOT	146.0		146.0	
81012600	CONDUIT IN TRENCH, 2" DIA., PVC		FOOT	36.0		36.0	
81012700	CONDUIT IN TRENCH, 2 1/2" DIA., PVC		FOOT	49.0		49.0	
81030100	CONDUIT SPLICE		EACH	3.0		3.0	
81400100	HANDHOLE		EACH	1.0		1.0	
81500200	TRENCH AND BACKFILL FOR ELECTRICAL WORK		FOOT	85.0		85.0	
81702110	ELECTRIC CABLE IN CONDUIT, 600V (XLP-TYPE USE) 1/C NO. 10		FOOT	1,504.0			1,504.0
85700200	FULL-ACTUATED CONTROLLER AND TYPE IV CABINET		EACH	1.0		1.0	
86600020	GULFBOX JUNCTION REMOVAL		EACH	1.0		1.0	
87301215	ELECTRIC CABLE IN CONDUIT, SIGNAL NO. 14 2C		FOOT	392.0		392.0	
87301225	ELECTRIC CABLE IN CONDUIT, SIGNAL NO. 14 3C		FOOT	1,427.0		1,427.0	

SUMMARY OF QUANTITIESLOCATION OF WORK: F. A. P. 840
US RTE 45 & WINDSOR RD.

F.A.P. RIE.	SECTION	COUNTY	TOTAL SHEETS	SHEET NO.
804	25B.IS	CHAMPAIGN	19	4

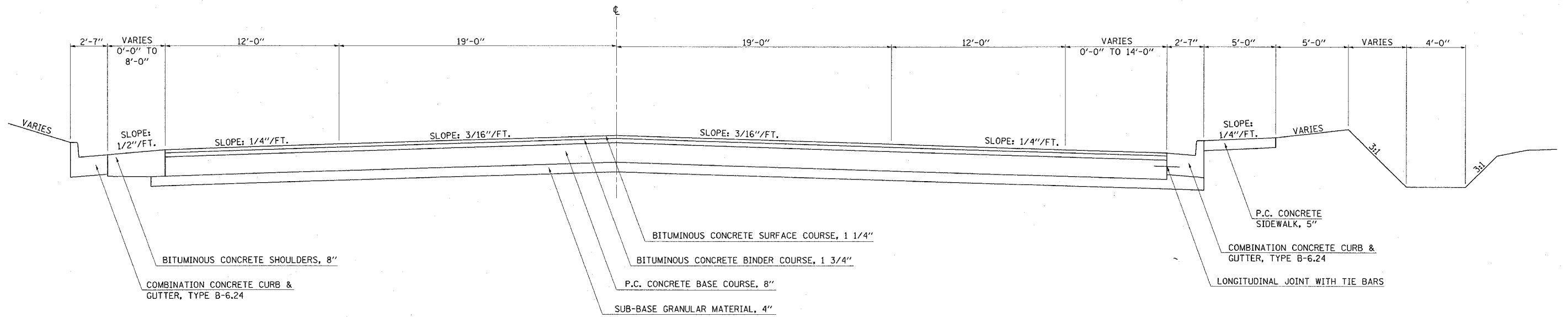
CODE NO	ITEM	TOTAL	CONSTRUCTION TYPE CODE:	UNIT	URBAN QUANTITY	FAP 804	FAP 804	FAP 804	90% FED 5% STATE 5% CITY Y032-1F
						90% FEDERAL 10% STATE 1000-1A	90% FEDERAL 5% STATE 5% CITY Y031-1F	100% CITY Y030-1E	
87301235	ELECTRIC CABLE IN CONDUIT, SIGNAL NO. 14	4C		FOOT	787.0		787.0		
87301245	ELECTRIC CABLE IN CONDUIT, SIGNAL NO. 14	5C		FOOT	1,172.0		1,172.0		
87301255	ELECTRIC CABLE IN CONDUIT, SIGNAL NO. 14	7C		FOOT	3,600.0		3,600.0		
87301515	ELECTRIC CABLE IN CONDUIT, LEAD-IN, NO. 18	3 PAIR		FOOT	5,178.0		5,178.0		
87502680	TRAFFIC SIGNAL POST, ALUMINUM 14 FT.			EACH	1.0		1.0		
87502700	TRAFFIC SIGNAL POST, ALUMINUM 16 FT.			EACH	3.0		3.0		
87601100	PEDESTRIAN PUSH-BUTTON POST, GALVANIZED STEEL, TYPE I			EACH	1.0		1.0		
87700270	STEEL MAST ARM ASSEMBLY AND POLE, 46 FT.			EACH	1.0		1.0		
87702950	STEEL COMBINATION MAST ARM ASSEMBLY AND POLE 44 FT.			EACH	1.0		1.0		
87702960	STEEL COMBINATION MAST ARM ASSEMBLY AND POLE 46 FT.			EACH	1.0		1.0		
87702970	STEEL COMBINATION MAST ARM ASSEMBLY AND POLE 48 FT.			EACH	1.0		1.0		
87800100	CONCRETE FOUNDATION, TYPE A			FOOT	3.1		3.1		
87800415	CONCRETE FOUNDATION, TYPE E 36-INCH DIAMETER			FOOT	52.0		52.0		
87900200	DRILL EXISTING HANDHOLE			EACH	12.0		12.0		
88200100	TRAFFIC SIGNAL BACKPLATE			EACH	12.0		12.0		
88500100	INDUCTIVE LOOP DETECTOR			EACH	17.0		17.0		
88600100	DETECTOR LOOP, TYPE I			FOOT	628.0		628.0		
88800100	PEDESTRIAN PUSH-BUTTON			EACH	4.0		4.0		
89000100	TEMPORARY TRAFFIC SIGNAL INSTALLATION			EACH	1.0		1.0		
89502300	REMOVE ELECTRIC CABLE FROM CONDUIT			FOOT	9,762.0		9,762.0		
89502375	REMOVE EXISTING TRAFFIC SIGNAL EQUIPMENT			EACH	1.0		1.0		
89502380	REMOVE EXISTING HANDHOLE			EACH	1.0		1.0		
89502385	REMOVE EXISTING CONCRETE FOUNDATION			EACH	6.0		6.0		
X0300739	UNINTERRUPT POWER SUPPLY			EACH	1.0		1.0		
X0323713	RADIO INTERCONNECT SYSTEM, COMPLETE			EACH	1.0				1.0
X7240500	RELOCATE EXISTING SIGNS			EACH	4.0		4.0		
X8730027	ELECTRIC CABLE IN CONDUIT, GROUNDING, NO. 6	1C		FOOT	777.0		777.0		
X8730250	ELECTRIC CABLE IN CONDUIT NO. 20 3/C, TWISTED, SHIELDED			FOOT	1,002.0		1,002.0		
X8801310	SIGNAL HEAD ,POLYCARBONATE, LED, 1-FACE, 3-SECTION, MAST ARM MOUNTED			EACH	8.0		8.0		
X8801400	SIGNAL HEAD ,POLYCARBONATE, LED, 1-FACE, 5-SECTION, MAST ARM MOUNTED			EACH	4.0		4.0		
X8801447	SIGNAL HEAD ,POLYCARBONATE, LED, 2-FACE, 5-SECTION, BRACKET MOUNTED			EACH	4.0		4.0		
X8810395	PEDESTRIAN SIGNAL HEAD, POLYCARBONATE, LED, 1-FACE, BRACKET MOUNTED			EACH	4.0		4.0		
XX001164	LUMINAIRE, HIGH PRESSURE SODIUM, SPECIAL			EACH	3.0			3.0	
XX002192	RELOCATE EXISTING EMERGENCY VEHICLE PRIORITY SYSTEM, COMPLETE			EACH	1.0		1.0		
XX003167	STREET NAME SIGN MAST ARM MOUNTED (INSTALL ONLY)			EACH	4.0		4.0		
XX005710	PAINT NEW TRAFFIC SIGNAL POST			EACH	5.0			5.0	
Z0048665	RAILROAD PROTECTIVE LIABILITY INSURANCE			L SUM	1.0		1.0		
Z0050400	REMOVE AND REPLACE ANCHOR BOLTS			EACH	16.0		16.0		
X0325141	PAINT NEW MAST ARM POLE, 40 FEET AND OVER			EACH	1.0			1.0	
X0325142	PAINT NEW COMBINATION MAST ARM POLE, 40 FEET AND OVER			EACH	3.0			3.0	

F.A.P. RTE.	SECTION	COUNTY	TOTAL SHEETS	SHEET NO.
804	25R,TS	CHAMPAIGN	19	5

EXISTING TYPICAL CROSS SECTION

U. S. ROUTE 45

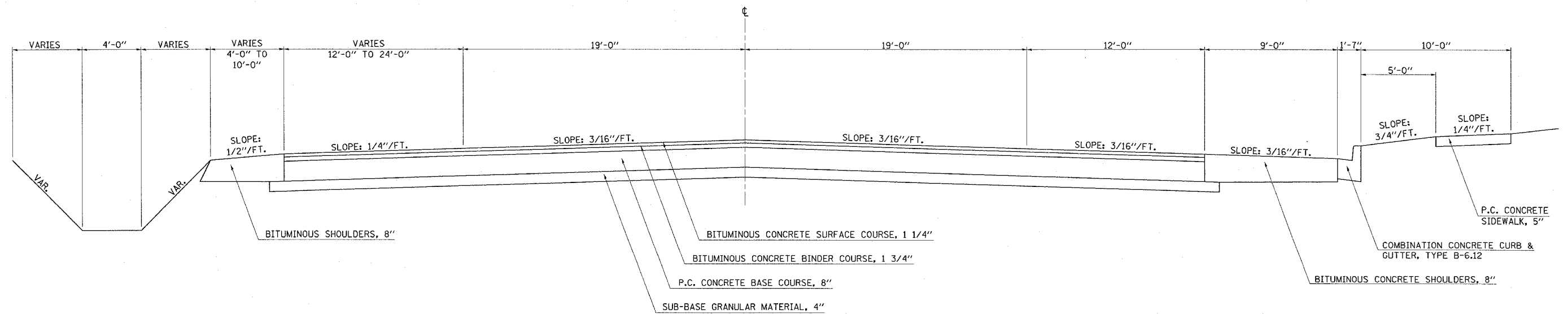
STATION 77+00.00 TO STATION 78+60.59



EXISTING TYPICAL CROSS SECTION

U. S. ROUTE 45

STATION 81+38.88 TO STATION 82+00.00



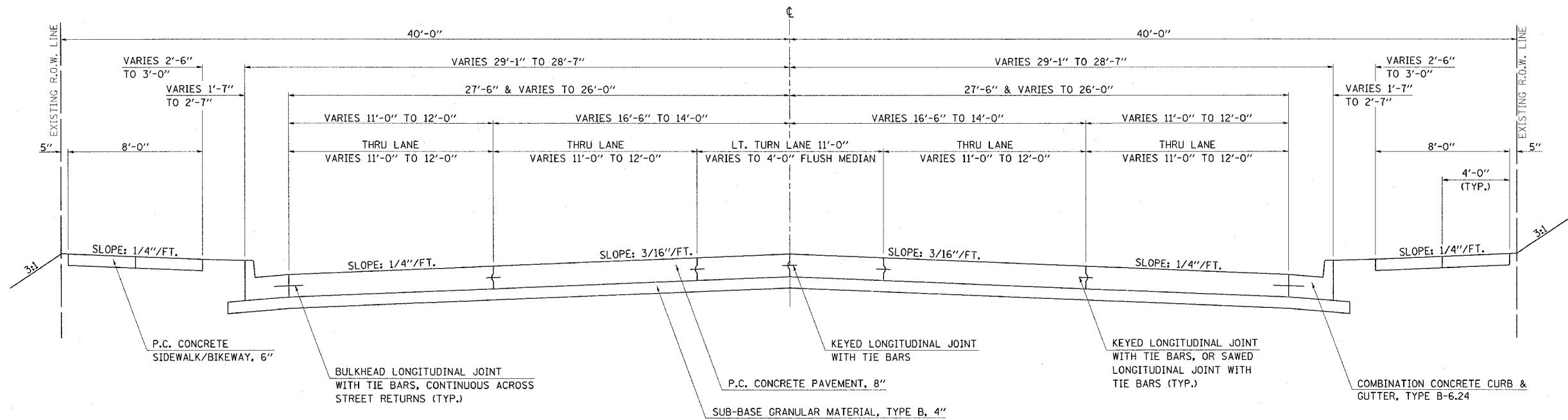
PLOT DATE = 8/28/2005
 FILE NAME = s:\projects\4582385 (v8)\spc001.dgn
 PLOT SCALE = 28.0000 / IN.
 USER NAME = alpcj

CONTRACT NO. 70476				
F.A.P. RTE.	SECTION	COUNTY	TOTAL SHEETS	SHEET NO.
804	25R,TS	CHAMPAIGN	19	6

EXISTING TYPICAL CROSS SECTION

WINDSOR ROAD

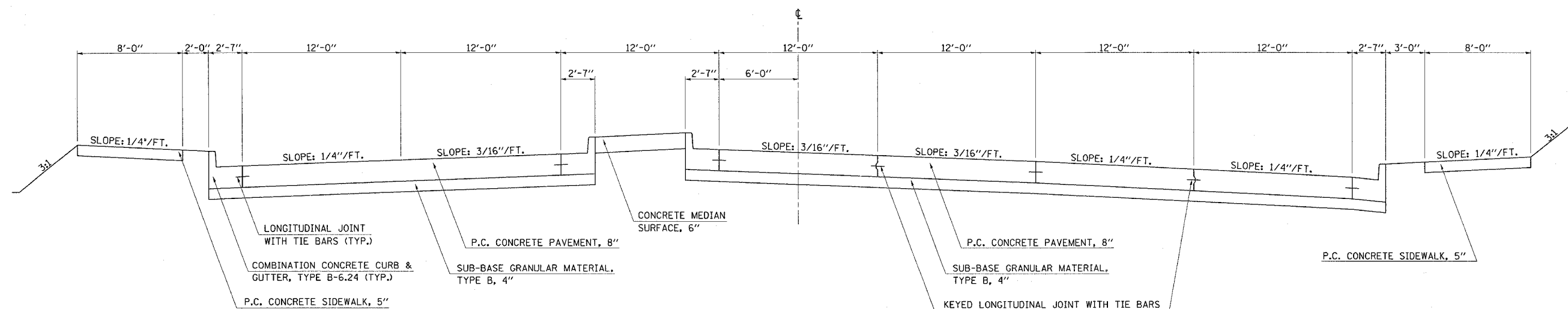
STATION 5+00.00 TO STATION 8+30.00



EXISTING TYPICAL CROSS SECTION

WINDSOR ROAD

STATION 8+30.00 TO STATION 9+63.00



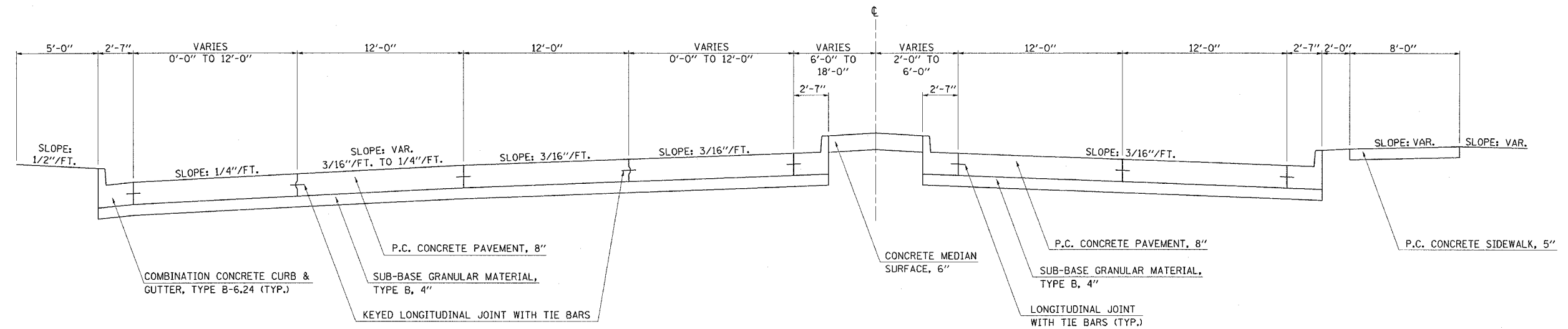
PLOT DATE = 8/29/2005
 FILE NAME = 25R,TS.dwg
 USER NAME = ellanj

F.A.P. RTE.	SECTION	COUNTY	TOTAL SHEETS	SHEET NO.
804	25R,TS	CHAMPAIGN	19	7

EXISTING TYPICAL CROSS SECTION

WINDSOR ROAD

STATION 10+43.00 TO STATION 15+00.00



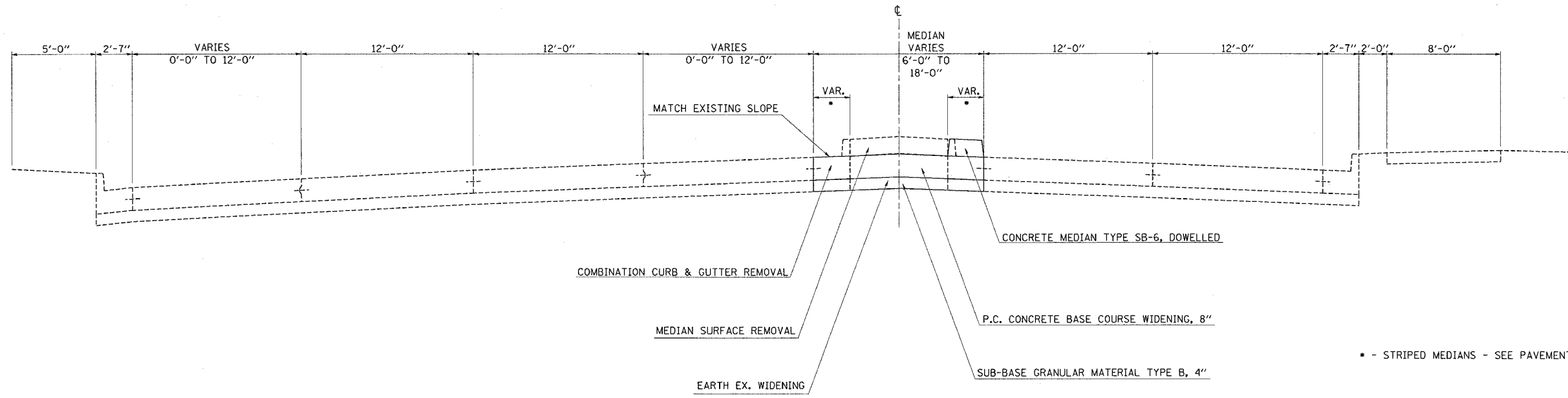
PLOT DATE = 8/29/2005
 FILE NAME = c:\projects\2005\10476\p0476.dgn
 PLOT SCALE = 20/8000 / IN.
 USER NAME = g12001

F.A.P. RTE.	SECTION	COUNTY	TOTAL SHEETS	SHEET NO.
804	25R,TS	CHAMPAIGN	19	9

PROPOSED TYPICAL CROSS SECTION

WINDSOR ROAD

STATION 10+43.00 TO STATION 15+00.00



SCHEDULE OF QUANTITIES

F.A.P. RTE.	SECTION	COUNTY	TOTAL SHEETS	SHEET NO.
804	25B.IS	CHAMPAIGN	19	10

EARTH EXCAVATION WIDENING	STATION	TO	STATION	QUANTITY
	7+27.49		9+64.05	98.6 CU. YD.
	10+43.76		11+80.29	60.6 CU. YD.
			TOTAL	159.2 CU. YD.

COMB. CONC. CURB & GUTTER REM.	STATION	TO	STATION	QUANTITY
	9+46.32		9+62.05	43.4 FT.
	8+29.84		9+40.15	229.4 FT.
	10+47.94		11+80.29	272.9 FT.
			TOTAL	545.7 FT.

MEDIAN REMOVAL	STATION	TO	STATION	QUANTITY
	7+27.49		8+29.84	1133.8 SQ. FT.
	9+57.64		9+62.05	15.9 SQ. FT.
	10+45.76		10+48.03	10.7 SQ. FT.
			TOTAL	1160.4 SQ. FT.

MEDIAN SURFACE REMOVAL	STATION	TO	STATION	QUANTITY
	8+29.84		9+40.15	746.1 SQ. FT.
	9+46.32		9+57.64	65.2 SQ. FT.
	10+48.03		11+80.30	932.9 SQ. FT.
			TOTAL	1744.2 SQ. FT.

SUB-BASE GRAN. MAT. TYPE B, 4"	STATION	TO	STATION	QUANTITY
	7+27.49		9+64.05	298.8 SQ. YD.
	10+43.76		11+80.29	183.8 SQ. YD.
			TOTAL	482.6 SQ. YD.

PCC BASE COURSE WID., 8"	STATION	TO	STATION	QUANTITY
	7+27.49		9+64.05	298.8 SQ. YD.
	10+43.76		11+80.29	183.8 SQ. YD.
			TOTAL	482.6 SQ. YD.

PROTECTIVE COAT	STATION	TO	STATION	QUANTITY
	7+27.49		9+64.05	98.8 SQ. YD.
	10+43.76		11+80.29	183.8 SQ. YD.
	10+62.34		11+80.30	70.1 SQ. YD.
	10+58.99		10+63.24	0.9 SQ. YD.
			TOTAL	553.6 SQ. YD.

CONC. MEDIAN TYPE SB-6 DOW.	STATION	TO	STATION	QUANTITY
	10+62.34		11+80.30	630.9 SQ. FT.
	10+58.99		10+63.24	8.7 SQ. FT.
			TOTAL	639.6 SQ. FT.

ITEM	WEST LEG	EAST LEG	TOTAL
12" DIAGONAL (YELLOW)	111.6	0.0	111.6 FT.
12" DIAGONAL (WHITE)	84.8	26.9	111.7 FT.
4" DOUBLE (YELLOW)	593.1	0.0	593.1 FT.
4" DOUBLE (WHITE)	408.0	321.5	729.5 FT.
4" SOLID (YELLOW)	0.0	254.6	254.6 FT.
4" SOLID (WHITE)	55.0	0.0	55.0 FT.
6" CROSS WALK (WHITE)	244.1	198.5	442.6 FT.
24" STOP BAR (WHITE)	61.8	69.1	130.9 FT.
LEFT TURN ARROW (15.6 SQ. FT. PER ARROW)	62.4	62.4	124.8 SQ. FT.

REMOVE EXISTING CONCRETE FOUNDATION	LOCATION	EACH
	STA. 78+94; 48' LT.	1
	STA. 79+31.5; 66' RT.	1
	STA. 79+46.3; 78' RT.	1
	STA. 79+55.5; 98' RT.	1
	STA. 79+98; 65' RT.	1
	STA. 80+45.5; 80' LT.	1
	STA. 80+96; 53' RT.	1
	TOTAL	7 EACH

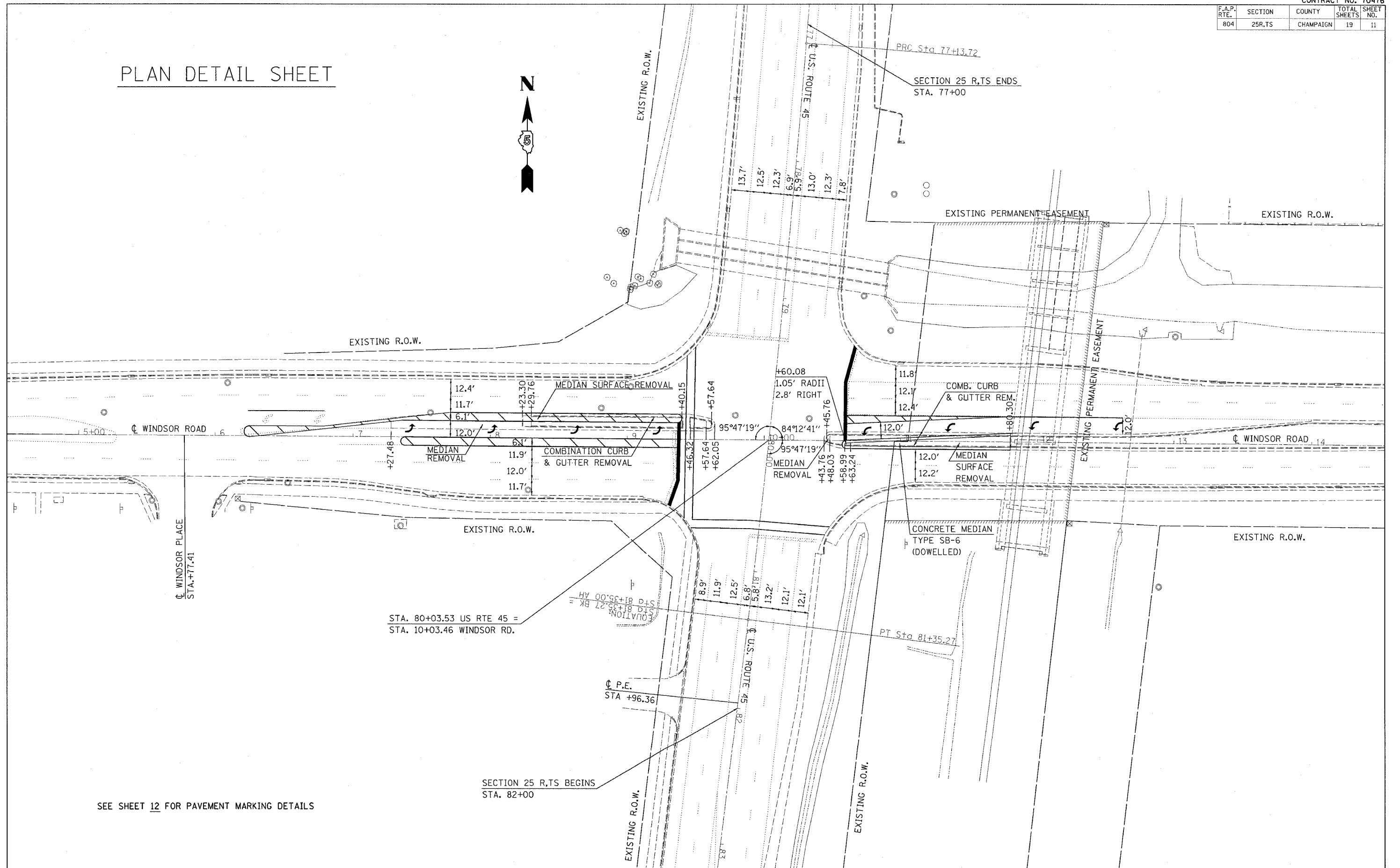
GULFBOX JUNCTION REMOVAL	LOCATION	EACH
	STA. 76+03; 57' RT.	1

REMOVE EXISTING HANDHOLE	LOCATION	EACH
	STA. 80+03; 87' RT.	1

HANDHOLE	LOCATION	EACH
	STA. 76+03; 57' RT.	1

F.A.P. RTE.	SECTION	COUNTY	TOTAL SHEETS	SHEET NO.
804	25R.TS	CHAMPAIGN	19	11

PLAN DETAIL SHEET



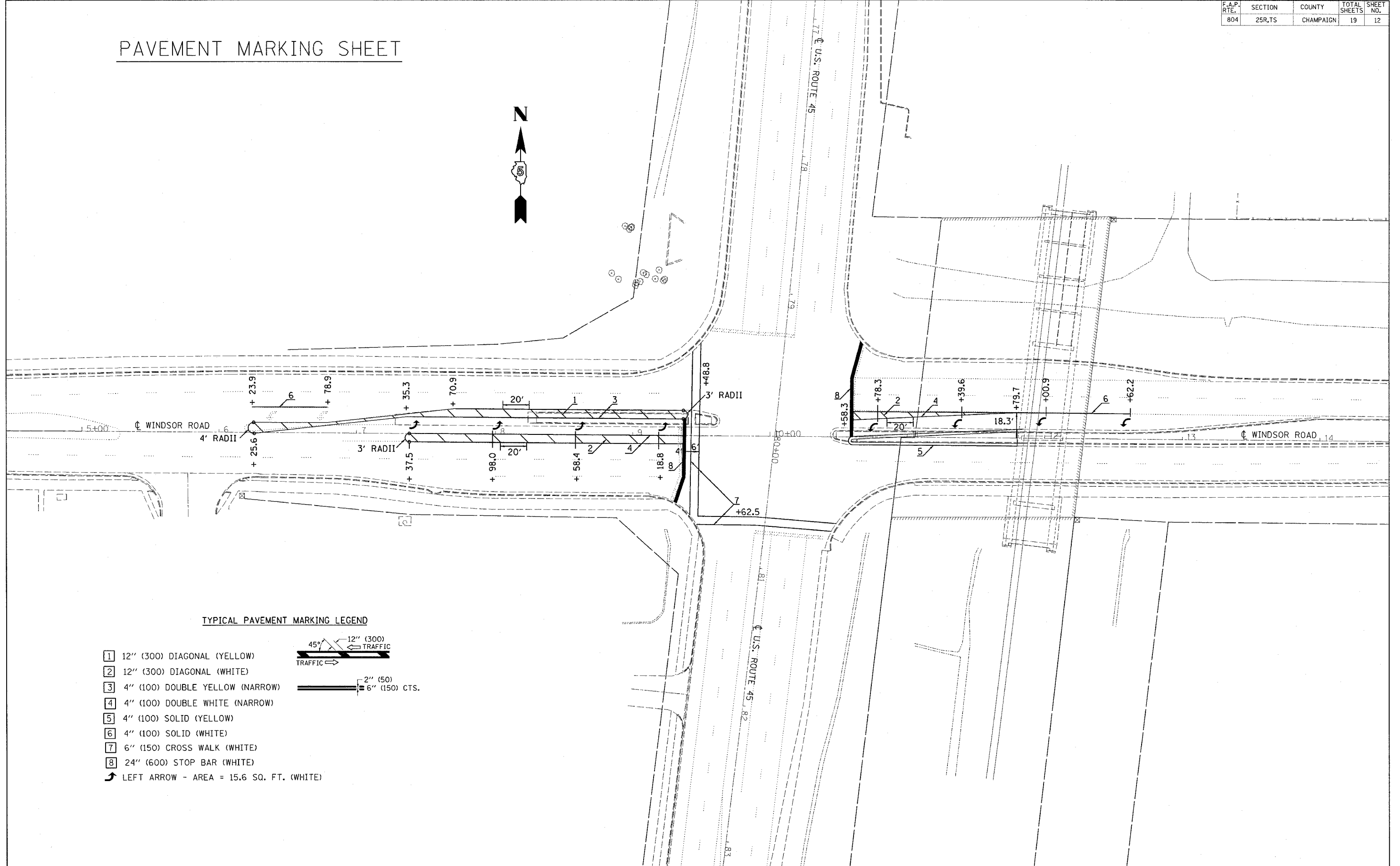
SEE SHEET 12 FOR PAVEMENT MARKING DETAILS

SECTION 25 R,TS BEGINS
STA. 82+00

PLOT DATE = #DATE#
 FILE NAME = #FILE#
 PLOT SCALE = #SCALE#
 USER NAME = #USER#

F.A.P. RTE.	SECTION	COUNTY	TOTAL SHEETS	SHEET NO.
804	25R,TS	CHAMPAIGN	19	12

PAVEMENT MARKING SHEET

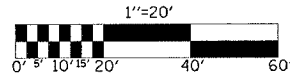


TYPICAL PAVEMENT MARKING LEGEND

- 1 12" (300) DIAGONAL (YELLOW)
 - 2 12" (300) DIAGONAL (WHITE)
 - 3 4" (100) DOUBLE YELLOW (NARROW)
 - 4 4" (100) DOUBLE WHITE (NARROW)
 - 5 4" (100) SOLID (YELLOW)
 - 6 4" (100) SOLID (WHITE)
 - 7 6" (150) CROSS WALK (WHITE)
 - 8 24" (600) STOP BAR (WHITE)
 - ↗ LEFT ARROW - AREA = 15.6 SQ. FT. (WHITE)
-
-

PLOT DATE * * * *
 FILE NAME * * * *
 PLOT SCALE * * * *
 USER NAME * * * *

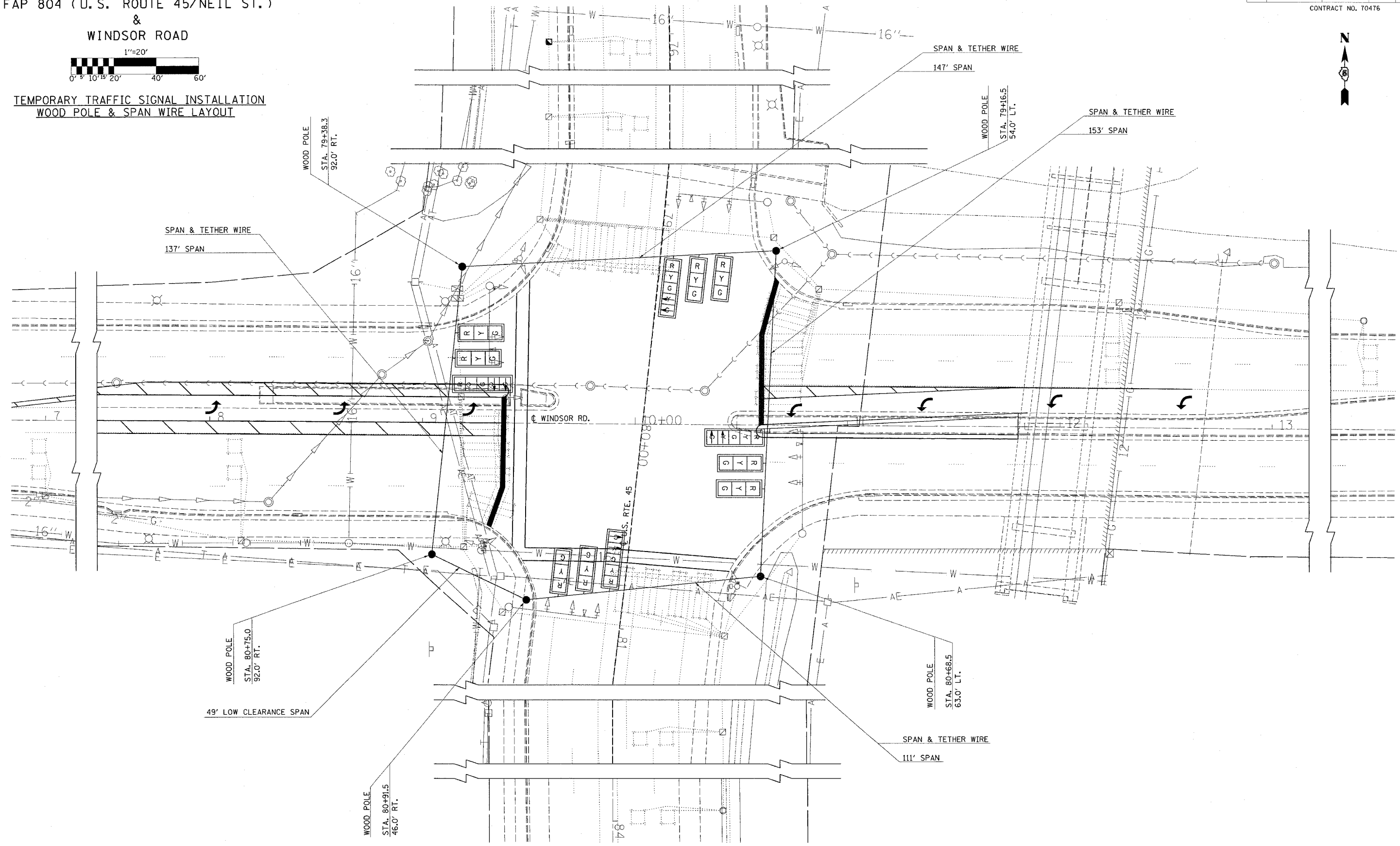
TRAFFIC SIGNAL MODERNIZATION FAP 804 (U. S. ROUTE 45/NEIL ST.) & WINDSOR ROAD



TEMPORARY TRAFFIC SIGNAL INSTALLATION WOOD POLE & SPAN WIRE LAYOUT

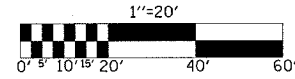
F.A.P. RTE.	SECTION	COUNTY	TOTAL SHEETS	SHEET NO.
804	25R,TS	CHAMPAIGN	19	13

CONTRACT NO. 70476



TRAFFIC SIGNAL MODERNIZATION FAP 804 (U.S. ROUTE 45/NEIL ST.)

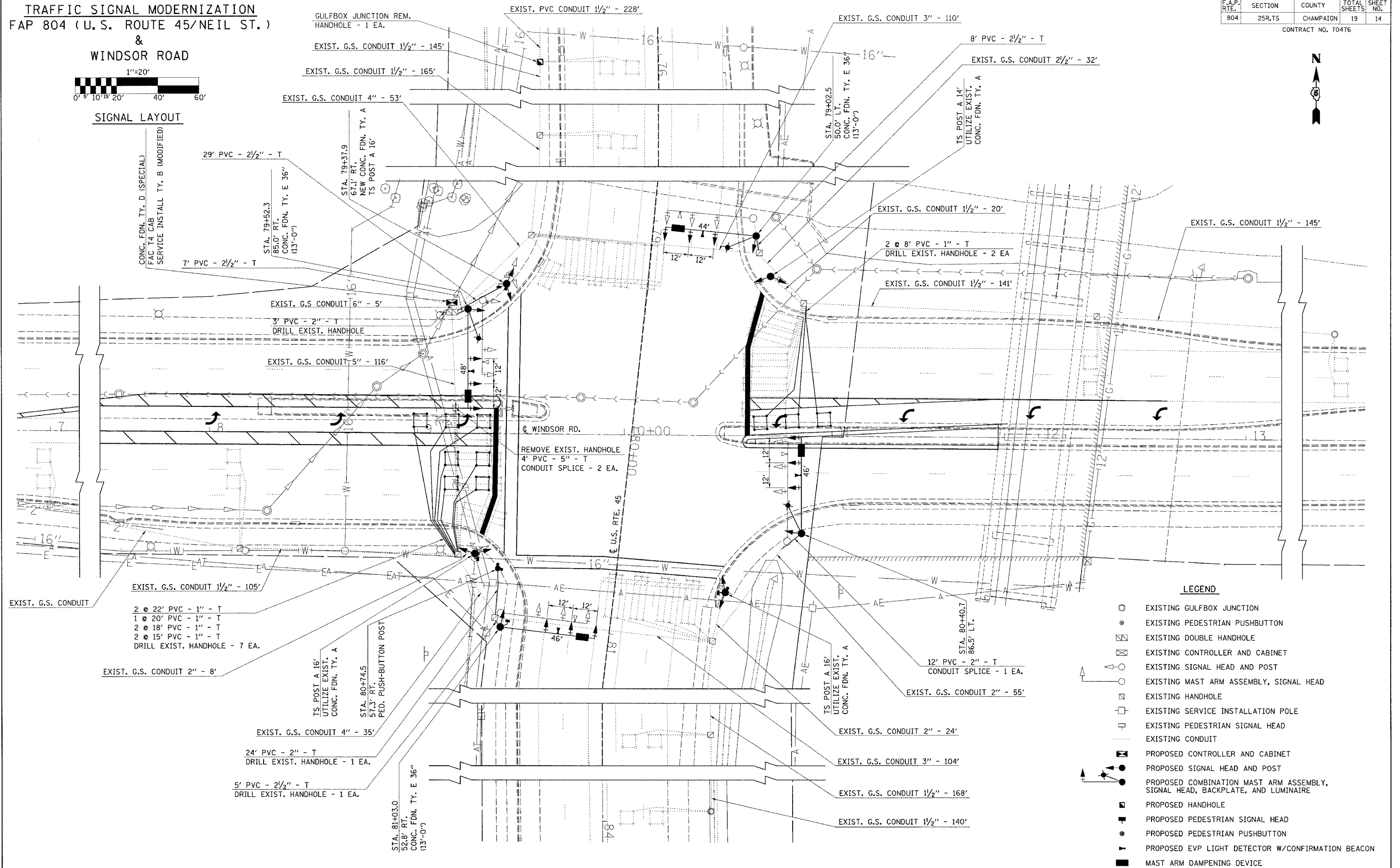
WINDSOR ROAD



SIGNAL LAYOUT

F.A.P. RTEL.	SECTION	COUNTY	TOTAL SHEETS	SHEET NO.
804	25R,TS	CHAMPAIGN	19	14

CONTRACT NO. 70476



CONC. FDN. TY. D (SPECIAL)
FAC T4 CAB
SERVICE INSTALL TY. B (MODIFIED)

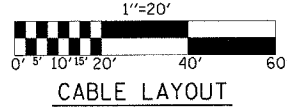
EXIST. G.S. CONDUIT
2 @ 22' PVC - 1" - T
1 @ 20' PVC - 1" - T
2 @ 18' PVC - 1" - T
2 @ 15' PVC - 1" - T
DRILL EXIST. HANDHOLE - 7 EA.

LEGEND

- EXISTING GULFBOX JUNCTION
- EXISTING PEDESTRIAN PUSHBUTTON
- EXISTING DOUBLE HANDHOLE
- EXISTING CONTROLLER AND CABINET
- EXISTING SIGNAL HEAD AND POST
- EXISTING MAST ARM ASSEMBLY, SIGNAL HEAD
- EXISTING HANDHOLE
- EXISTING SERVICE INSTALLATION POLE
- EXISTING PEDESTRIAN SIGNAL HEAD
- EXISTING CONDUIT
- PROPOSED CONTROLLER AND CABINET
- PROPOSED SIGNAL HEAD AND POST
- PROPOSED COMBINATION MAST ARM ASSEMBLY, SIGNAL HEAD, BACKPLATE, AND LUMINAIRE
- PROPOSED HANDHOLE
- PROPOSED PEDESTRIAN SIGNAL HEAD
- PROPOSED PEDESTRIAN PUSHBUTTON
- PROPOSED EVP LIGHT DETECTOR W/CONFIRMATION BEACON
- MAST ARM DAMPENING DEVICE

TRAFFIC SIGNAL MODERNIZATION
FAP 804 (U.S. ROUTE 45/NEIL ST.)

&
WINDSOR ROAD



CABLE LAYOUT

PULL: 4 NO. 14 2/C; 4 NO. 14 3/C;
 13 NO. 14 5/C; 8 NO. 14 7/C;
 4 NO. 20 3/C; 19 NO. 14 2/C, T.S.

ADD: 2 NO. 14 2/C, SIG.; 5 NO. 14 3/C, SIG.;
 4 NO. 14 4/C, SIG.; 4 NO. 14 5/C, SIG.;
 16 NO. 14 7/C, SIG.; 4 NO. 20 3/C;
 18 NO. 18, 3 PR., L-I; 2 NO. 6 1/C, XLP

PULL: 3 NO. 14 2/C; 3 NO. 14 3/C;
 6 NO. 14 5/C; 5 NO. 14 5/C;
 2 NO. 20 3/C; 8 NO. 14 2/C, T.S.

ADD: 1 NO. 14 2/C, SIG.; 3 NO. 14 3/C, SIG.;
 3 NO. 14 4/C, SIG.; 2 NO. 14 5/C, SIG.;
 8 NO. 14 7/C, SIG.; 2 NO. 20 3/C;
 2 NO. 10 1/C, XLP; 1 NO. 6 1/C, XLP;
 9 NO. 18, 3 PR., L-I

PULL: 1 NO. 14 2/C, T.S.
 ADD: 1 NO. 18, 3 PR., L-I

PULL: 2 NO. 14 2/C, T.S.
 ADD: 2 NO. 18, 3 PR., L-I

PULL: 3 NO. 14 5/C; 2 NO. 14 7/C;
 1 NO. 20 3/C; 11 NO. 14 2/C, T.S.

ADD: 1 NO. 14 3/C, SIG.; 1 NO. 14 5/C, SIG.;
 4 NO. 14 7/C, SIG.; 9 NO. 18, 3 PR., L-I;
 1 NO. 20 3/C; 2 NO. 10 1/C, XLP;
 1 NO. 6 1/C, XLP

1 NO. 14 2/C, XIG.; 1 NO. 14 4/C, SIG.;
 2 NO. 14 7/C, SIG.; 1 NO. 6 1/C, XLP

1 NO. 14 3/C, XIG.; 1 NO. 14 5/C, SIG.;
 2 NO. 14 7/C, SIG.; 1 NO. 20 3/C;
 2 NO. 10 1/C, XLP; 1 NO. 6 1/C, XLP

PULL: 3 NO. 14 5/C; 2 NO. 14 7/C;
 1 NO. 20 3/C; 5 NO. 14 2/C, T.S.

ADD: 1 NO. 14 3/C, SIG.; 1 NO. 14 5/C, SIG.;
 4 NO. 14 7/C, SIG.; 6 NO. 18, 3 PR., L-I;
 1 NO. 20 3/C; 2 NO. 10 1/C, XLP;
 1 NO. 6 1/C, XLP

1 NO. 14 3/C, SIG.; 1 NO. 14 5/C, SIG.;
 2 NO. 14 7/C, SIG.; 1 NO. 20 3/C;
 2 NO. 10 1/C, XLP; 1 NO. 6 1/C, XLP

PULL: 1 NO. 14 5/C; 1 NO. 14 7/C;
 5 NO. 14 2/C, T.S.

ADD: 2 NO. 14 7/C, SIG.;
 6 NO. 18, 3 PR., L-I;
 1 NO. 6 1/C, XLP

PULL: 1 NO. 14 5/C; 1 NO. 14 7/C

ADD: 2 NO. 14 7/C, SIG.; 1 NO. 6 1/C, XLP

PULL: 2 NO. 14 2/C, T.S.
 ADD: 2 NO. 18, 3 PR., L-I

PULL: 1 NO. 14 2/C, T.S.
 ADD: 1 NO. 18, 3 PR., L-I

ADD: 1 NO. 6 1/C, XLP

PULL: 2 NO. 14 5/C; 1 NO. 14 7/C;
 1 NO. 20 3/C

ADD: 1 NO. 14 3/C, SIG.; 1 NO. 14 5/C, SIG.;
 2 NO. 14 7/C, SIG.; 1 NO. 20 3/C;
 2 NO. 10 1/C, XLP; 1 NO. 6 1/C, XLP;
 3 NO. 18, 3 PR., L-I

PULL: 1 NO. 14 2/C; 1 NO. 14 3/C;
 1 NO. 14 5/C; 1 NO. 14 7/C

ADD: 1 NO. 14 2/C, SIG.; 1 NO. 14 4/C, SIG.;
 2 NO. 14 7/C, SIG.; 1 NO. 6 1/C, XLP

PULL: 2 NO. 14 2/C, T.S.
 ADD: 1 NO. 18, 3 PR., L-I

PULL: 1 NO. 14 2/C; 1 NO. 14 3/C;
 3 NO. 14 5/C; 2 NO. 14 7/C;
 1 NO. 20 3/C; 5 NO. 14 5/C

ADD: 1 NO. 14 2/C, SIG.; 1 NO. 14 3/C, SIG.;
 1 NO. 14 4/C, SIG.; 1 NO. 14 5/C, SIG.;
 4 NO. 14 7/C, SIG.; 1 NO. 20 3/C;
 2 NO. 10 1/C, XLP; 1 NO. 6 1/C, XLP;
 3 NO. 18, 3 PR., L-I

PULL: 1 NO. 14 2/C, T.S.
 ADD: 1 NO. 18, 3 PR., L-I

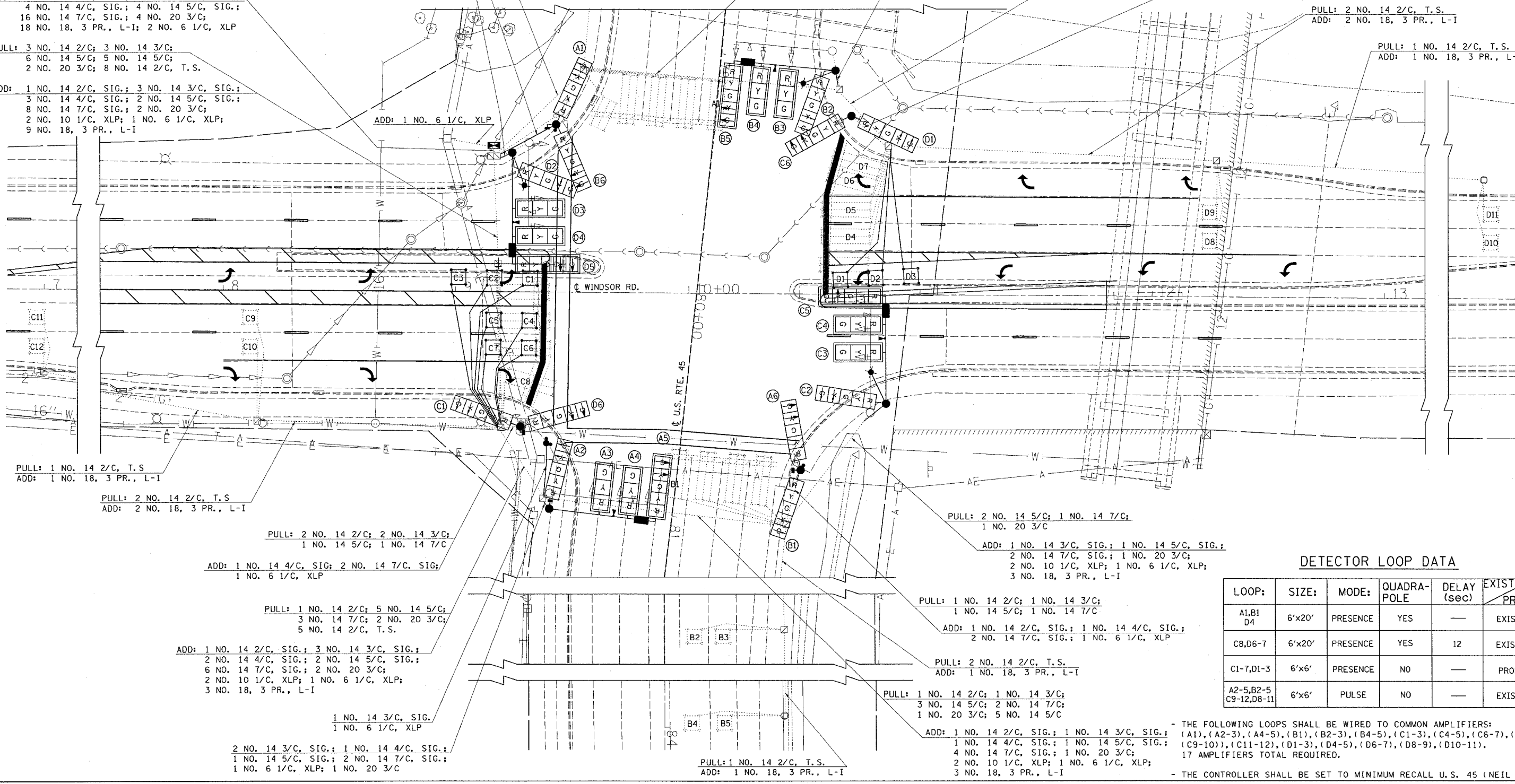
ADD: 1 NO. 14 2/C, SIG.; 3 NO. 14 3/C, SIG.;
 2 NO. 14 4/C, SIG.; 2 NO. 14 5/C, SIG.;
 6 NO. 14 7/C, SIG.; 2 NO. 20 3/C;
 2 NO. 10 1/C, XLP; 1 NO. 6 1/C, XLP;
 3 NO. 18, 3 PR., L-I

1 NO. 14 3/C, SIG.
 1 NO. 6 1/C, XLP

2 NO. 14 3/C, SIG.; 1 NO. 14 4/C, SIG.;
 1 NO. 14 5/C, SIG.; 2 NO. 14 7/C, SIG.;
 1 NO. 6 1/C, XLP; 1 NO. 20 3/C

F.A.P. RTE.	SECTION	COUNTY	TOTAL SHEETS	SHEET NO.
804	25R,TS	CHAMPAIGN	19	15

CONTRACT NO. T0476



DETECTOR LOOP DATA

LOOP:	SIZE:	MODE:	QUADRA-POLE	DELAY (sec)	EXIST. PROP.
A1,B1 D4	6'x20'	PRESENCE	YES	—	EXIST.
C8,D6-7	6'x20'	PRESENCE	YES	12	EXIST.
C1-7,D1-3	6'x6'	PRESENCE	NO	—	PROP.
A2-5,B2-5 C9-12,D8-11	6'x6'	PULSE	NO	—	EXIST.

- THE FOLLOWING LOOPS SHALL BE WIRED TO COMMON AMPLIFIERS: (A1), (A2-3), (A4-5), (B1), (B2-3), (B4-5), (C1-3), (C4-5), (C6-7), (C8), (C9-10), (C11-12), (D1-3), (D4-5), (D6-7), (D8-9), (D10-11). 17 AMPLIFIERS TOTAL REQUIRED.

- THE CONTROLLER SHALL BE SET TO MINIMUM RECALL U.S. 45 (NEIL ST.).

F.A.P. RTE.	SECTION	COUNTY	TOTAL SHEETS	SHEET NO.
804	25R.TS	CHAMPAIGN	19	16

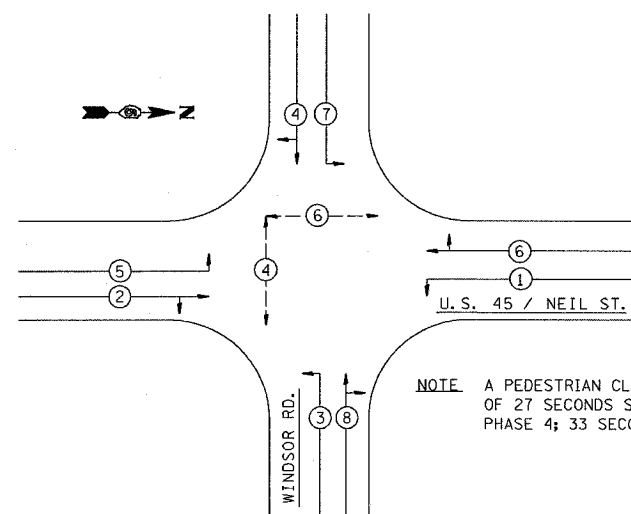
CONTRACT NO. 70476

PUSH
BUTTON
TO
CROSS
NEIL
STREET

PUSH
BUTTON
TO
CROSS
WINDSOR
ROAD

NOTE: PEDESTRIAN PUSH-BUTTON SIGNS SHALL BE MOUNTED ABOVE THE PEDESTRIAN PUSH-BUTTONS. THE SIGNS SHALL BE BOLTED TO THE POSTS. THE SIGNS SHALL BE CONSIDERED AS INCLUDED IN THE COST OF PEDESTRIAN PUSH-BUTTONS IN ACCORDANCE WITH SECTION 888 OF THE STANDARD SPECIFICATIONS.

PEDESTRIAN PUSH-BUTTON SIGN DETAIL



NOTE: A PEDESTRIAN CLEARANCE INTERVAL OF 27 SECONDS SHALL BE USED FOR PHASE 4; 33 SECONDS FOR PHASE 6.

PHASE DESIGNATION DIAGRAM

ITEMS TO BE RETURNED TO THE CITY OF CHAMPAIGN

ITEM	QUANTITY
CONTROLLER CABINET	1 EACH
CONTROLLER	1 EACH
TRAFFIC SIGNAL POST & BASE	5 EACH

GENERAL NOTES

- THE CONTROLLER SHALL BE SET TO MINIMUM RECALL U.S. 45/NEIL ST.
- THE FINAL LOCATIONS OF ALL TRAFFIC CONTROL ITEMS SHALL BE VERIFIED BY THE ENGINEER IN THE FIELD.
- COMBINATION MAST ARM ASSEMBLIES SHALL BE FURNISHED WITH 15 FT. LUMINAIRE TRUSS ARMS WITH A MOUNTED LUMINAIRE HEIGHT OF 40 FT.
- TIMINGS SHOWN ARE FOR INITIAL OPERATION AND MAY BE ADJUSTED TO REFLECT SITE CONDITIONS PER APPROVAL OF THE TRAFFIC OPERATIONS ENGINEER.
- SIGNAL FACES FOR THE NORTH APPROACH ARE NOTED AS "A", "B" FOR THE SOUTH APPROACH, "C" FOR THE WEST APPROACH, AND "D" FOR THE EAST APPROACH.
- ITEMS REMOVED WILL BECOME THE PROPERTY OF THE CONTRACTOR UNLESS OTHERWISE NOTED ON THE PLANS.
- ALL PAVEMENT MARKING QUANTITIES WILL BE INCLUDED IN THE DESIGN PLANS.
- A NO. 6 1/C XLP CABLE HAS BEEN FURNISHED TO PROVIDE A BONDED GROUND TO CONNECT ALL TRAFFIC SIGNAL POSTS, POLES, CABINETS, EXPOSED METAL CONDUITS AND HANDHOLES. THE BONDED GROUND SHALL BE CONNECTED AT THE SERVICE INSTALLATION.
- ALL TRAFFIC SIGNAL MAST ARM ASSEMBLIES MUST BE DESIGNED FOR THE LOADINGS SHOWN ON THE HIGHWAY STANDARDS OR THESE SIGNAL PLANS, WHICHEVER IS GREATER.
- THE INTERNALLY ILLUMINATED STREET NAME SIGNS SHALL OPERATE VIA A NO. 14 3/C SPLICED INTO THE NO. 10 1/C LUMINAIRE CABLE. SEE SPECIAL PROVISIONS.

BILL OF MATERIALS
FAP 804 (U.S. ROUTE 45) & WINDSOR RD.

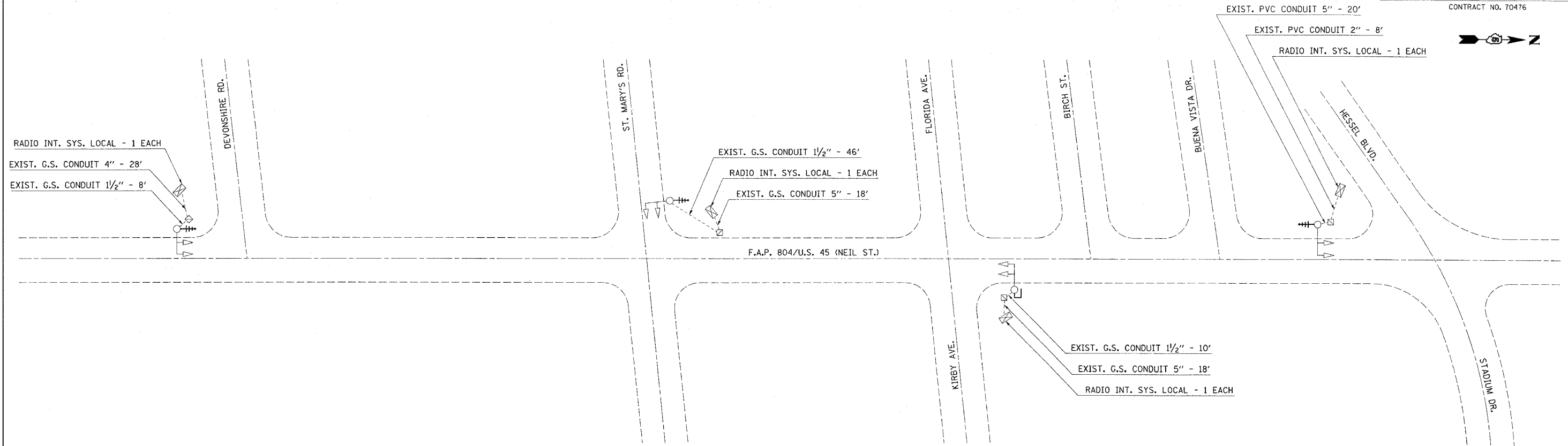
ITEM	UNIT	QUANTITY
SERVICE INSTALLATION, TYPE B (MODIFIED)	EACH	1
CONDUIT IN TRENCH, 1" DIA., PVC	FOOT	146
CONDUIT IN TRENCH, 2" DIA., PVC	FOOT	36
CONDUIT IN TRENCH, 2 1/2" DIA., PVC	FOOT	49
CONDUIT SPLICE	EACH	3
HANDHOLE	EACH	1
TRENCH AND BACKFILL FOR ELECTRICAL WORK	FOOT	85
ELECTRIC CABLE IN CONDUIT, 600V (XLP-TYPE USE) 1/C NO. 10	FOOT	1504
FULL-ACTUATED CONTROLLER AND TYPE IV CABINET	EACH	1
GULFBOX JUNCTION REMOVAL	EACH	1
ELECTRIC CABLE IN CONDUIT, SIGNAL NO. 14 2C	FOOT	392
ELECTRIC CABLE IN CONDUIT, SIGNAL NO. 14 3C	FOOT	1427
ELECTRIC CABLE IN CONDUIT, SIGNAL NO. 14 4C	FOOT	787
ELECTRIC CABLE IN CONDUIT, SIGNAL NO. 14 5C	FOOT	1172
ELECTRIC CABLE IN CONDUIT, SIGNAL NO. 14 7C	FOOT	3600
ELECTRIC CABLE IN CONDUIT, LEAD-IN, NO. 18 3 PAIR	FOOT	5178
TRAFFIC SIGNAL POST, ALUMINUM 14 FT.	EACH	1
TRAFFIC SIGNAL POST, ALUMINUM 16 FT.	EACH	3
PEDESTRIAN PUSH-BUTTON POST, GALVANIZED STEEL, TYPE I	EACH	1
STEEL MAST ARM ASSEMBLY AND POLE, 46 FT.	EACH	1
STEEL COMBINATION MAST ARM ASSEMBLY AND POLE 44 FT.	EACH	1
STEEL COMBINATION MAST ARM ASSEMBLY AND POLE 46 FT.	EACH	1
STEEL COMBINATION MAST ARM ASSEMBLY AND POLE 48 FT.	EACH	1
CONCRETE FOUNDATION, TYPE A	FOOT	3.1
CONCRETE FOUNDATION, TYPE E 36-INCH DIAMETER	FOOT	52
DRILL EXISTING HANDHOLE	EACH	12
INDUCTIVE LOOP DETECTOR	EACH	17
DETECTOR LOOP, TYPE I	FOOT	628
PEDESTRIAN PUSH-BUTTON	EACH	4
TEMPORARY TRAFFIC SIGNAL INSTALLATION	EACH	1
REMOVE ELECTRIC CABLE FROM CONDUIT	FOOT	9762
REMOVE EXISTING TRAFFIC SIGNAL EQUIPMENT	EACH	1
REMOVE EXISTING HANDHOLE	EACH	1
REMOVE EXISTING CONCRETE FOUNDATION	EACH	6
UNINTERRUPTIBLE POWER SUPPLY	EACH	1
RELOCATE EXISTING SIGNS	EACH	4
ELECTRIC CABLE IN CONDUIT, GROUNDING, NO. 6 1C	FOOT	777
ELECTRIC CABLE IN CONDUIT NO. 20 3/C, TWISTED, SHIELDED	FOOT	1002
SIGNAL HEAD, POLYCARBONATE, LED, 1-FACE, 3-SECTION, MAST ARM MOUNTED	EACH	8
SIGNAL HEAD, POLYCARBONATE, LED, 1-FACE, 5-SECTION, MAST ARM MOUNTED	EACH	4
SIGNAL HEAD, POLYCARBONATE, LED, 2-FACE, 5-SECTION, BRACKET MOUNTED	EACH	4
PEDESTRIAN SIGNAL HEAD, POLYCARBONATE, LED, 1-FACE, BRACKET MOUNTED	EACH	4
LUMINAIRE, HIGH PRESSURE SODIUM, SPECIAL	EACH	3
RELOCATE EXISTING EMERGENCY VEHICLE PRIORITY SYSTEM, COMPLETE	EACH	1
STREET NAME SIGN MAST ARM MOUNTED (INSTALL ONLY)	EACH	4
TRAFFIC SIGNAL BACKPLATE	EACH	12

GENERAL NOTES

- THE FOLLOWING SIGNAL HEADS SHALL BE WIRED IN PARALLEL AT THE MAST POLE HANDHOLE: (A3, A4), (B3, B4), (C3, C4), (D3, D4) - EACH MAST ARM MOUNTED SIGNAL HEAD SHALL HAVE ITS OWN INDIVIDUAL CABLE FROM THE MAST POLE HANDHOLE TO THE SIGNAL HEAD.
- THE ACTUAL LOCATION OF ALL SIGNAL FOUNDATIONS, HANDHOLES, AND TRAFFIC CONTROLLER WILL BE DETERMINED IN THE FIELD BY THE ENGINEER.
- POST MOUNTED SIGNALS SHALL BE INSTALLED SO THAT NO PART OF THE SIGNAL HEAD IS WITHIN 2 FT. OF THE FACE OF CURB.
- ALL MAST ARM POLES SHALL BE A MINIMUM OF 6 FT. FROM THE CENTER OF THE POLE TO THE FACE OF CURB (ON THE MAST ARM SIDE) OR AS SHOWN ON THE PLANS.
- ALIGN ADJACENT RED INDICATIONS TO SAME HEIGHT ABOVE PAVEMENT.
- THE BASE FOR A TRAFFIC SIGNAL POST SHALL BE SITUATED SUCH THAT THE HANDHOLE IS LOCATED ON A SIDE AWAY FROM A TRAVELED LANE.
- PEDESTRIAN PUSHBUTTON SIGNAL SIGNS SHALL BE MOUNTED ABOVE THE APPROPRIATE PEDESTRIAN PUSHBUTTON.
- THE ANTI-BACKUP FEATURE SHALL BE HARDWIRED ON THE BACKPANEL OF THE CONTROLLER CABINET.

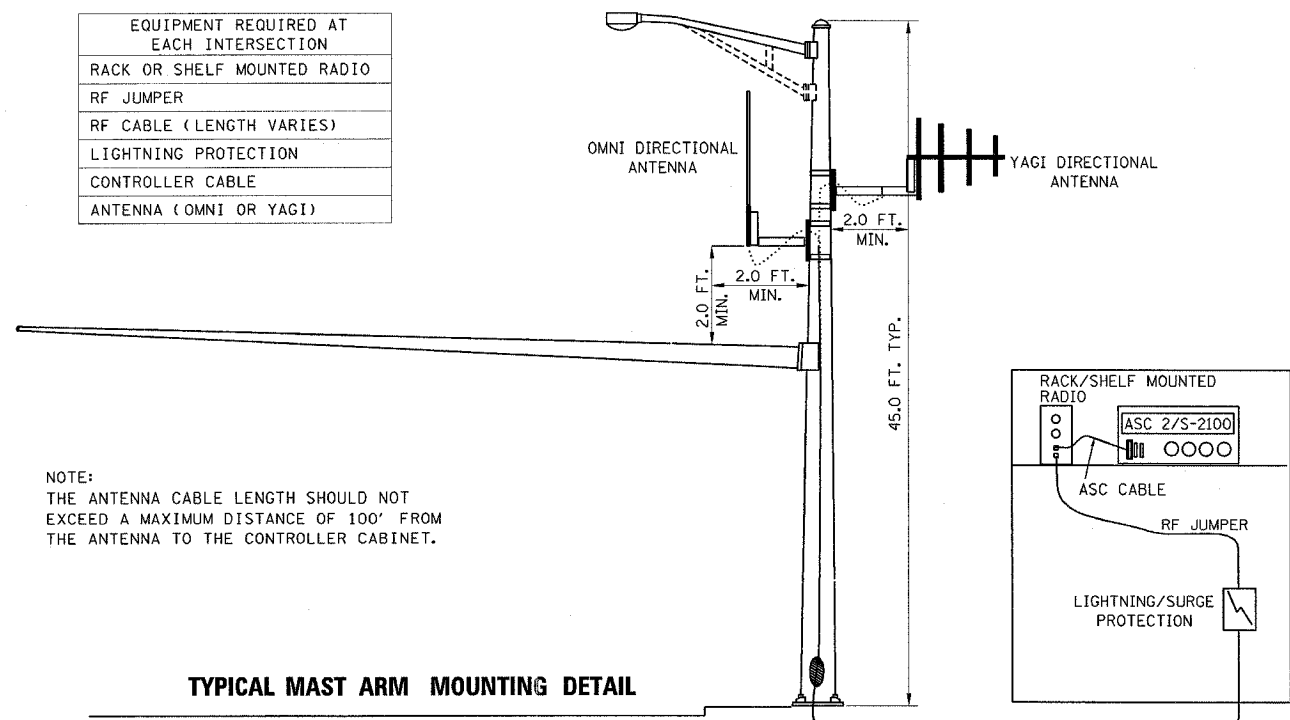
F.A.P. RTE.	SECTION	COUNTY	TOTAL SHEETS	SHEET NO.
804	25R,TS	CHAMPAIGN	19	16A

CONTRACT NO. 70476



RADIO INTERCONNECT ANTENNA MOUNTING DETAILS

EQUIPMENT REQUIRED AT EACH INTERSECTION
RACK OR SHELF MOUNTED RADIO
RF JUMPER
RF CABLE (LENGTH VARIES)
LIGHTNING PROTECTION
CONTROLLER CABLE
ANTENNA (OMNI OR YAGI)



NOTE:
THE ANTENNA CABLE LENGTH SHOULD NOT EXCEED A MAXIMUM DISTANCE OF 100' FROM THE ANTENNA TO THE CONTROLLER CABINET.

TYPICAL MAST ARM MOUNTING DETAIL

NOT TO SCALE

NOTE:
RADIO ANTENNA TO BE MOUNTED ON MAST ARM STRAIN POLE (SEE ANTENNA DETAILS).

LEGEND

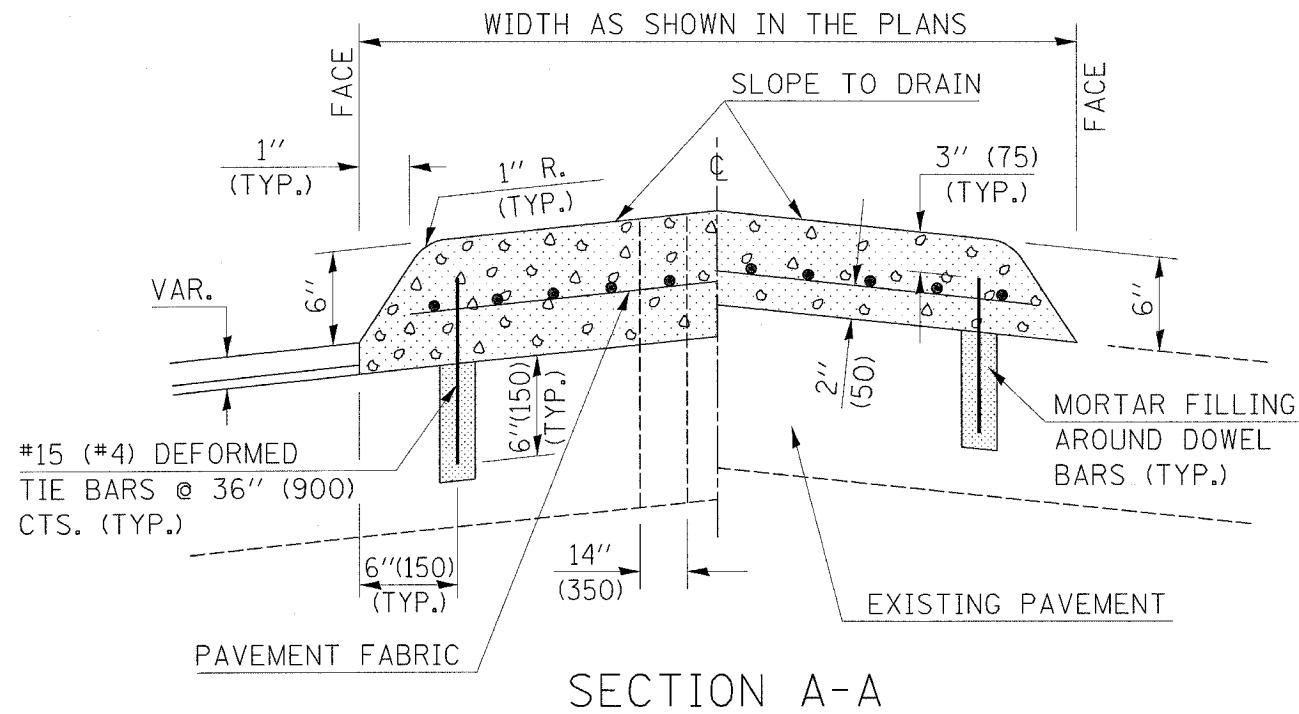
- ⊠ EXISTING CONTROLLER AND CABINET
- ⊙ EXISTING SIGNAL HEAD AND POST
- ⊙ EXISTING MAST ARM ASSEMBLY, SIGNAL HEAD
- ⊠ EXISTING HANDHOLE
- ⊠ EXISTING SERVICE INSTALLATION POLE
- EXISTING CONDUIT
- ⊠ PROPOSED RADIO INTERCONNECT ANTENNA - YAGI DIRECTIONAL
- ⊠ PROPOSED RADIO INTERCONNECT ANTENNA - OMNI DIRECTIONAL

F.A.P. RTE.	SECTION	COUNTY	TOTAL SHEETS	SHEET NO.
804	25R,TS	CHAMPAIGN	19	18

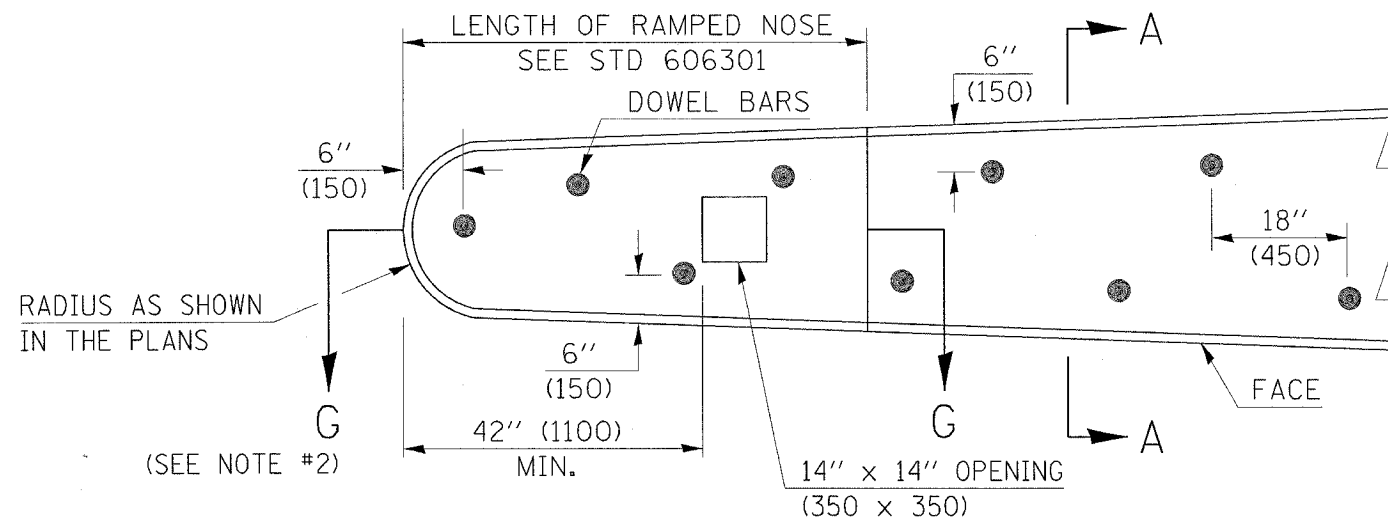
DETAIL OF CONCRETE MEDIAN, TYPE SB-6 (DOWELED)

GENERAL NOTES

1. THE GENERAL NOTES FOR STANDARD 606301 SHALL APPLY.
2. SECTION G-G SHALL BE THE SAME AS SHOWN ON STANDARD 606301.
3. DOWEL BARS @ 36" (900) CTS. OR AS DIRECTED BY THE ENGINEER.
4. THIS WORK WILL BE PAID FOR AT THE CONTRACT UNIT PRICE PER SQ FOOT (m²) FOR CONCRETE MEDIAN, TYPE SB-6 (DOWELED), INCLUDING THE COST OF FURNISHING AND INSTALLING THE DOWEL BARS, MORTAR FILLING, PAVEMENT FABRIC AND THE REMOVAL AND DISPOSAL OF THE EXISTING PAVEMENT FOR THE 14" x 14" (350 x 350) OPENING, IF REQUIRED, AND NO ADDITIONAL COMPENSATION WILL BE ALLOWED.



SECTION A-A



PLAN OF MEDIAN

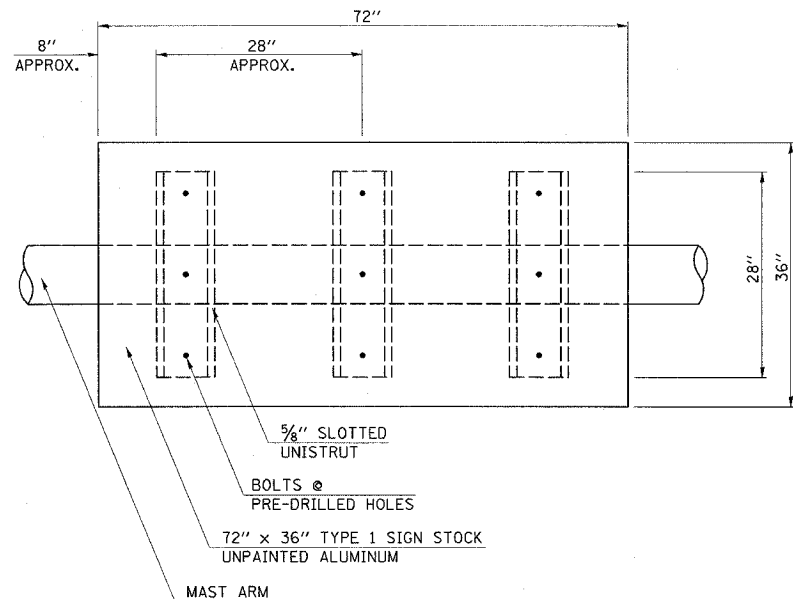
	NAME	DATE	REVISIONS	
DESIGNED	J.M.H.	1-89	NAME	DATE
CHECKED	F.M.S.	1-89	J.Y.B.	06/02
CADD NO.			K.A.G.	06/03

ALL DIMENSIONS ARE IN INCHES (MILLIMETERS) UNLESS OTHERWISE SHOWN.

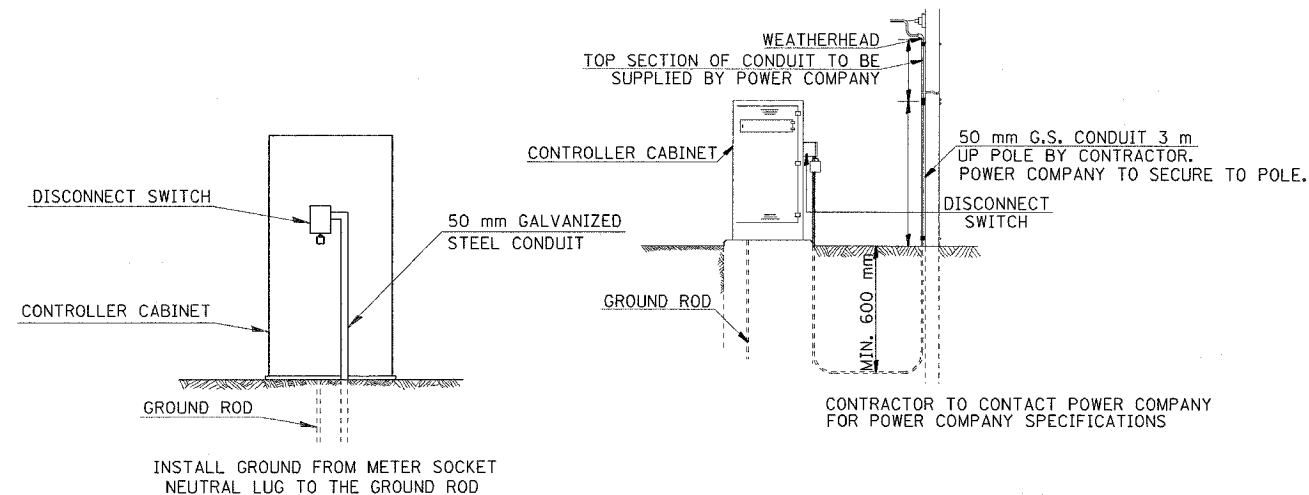
F.A.P. RTE.	SECTION	COUNTY	TOTAL SHEETS	SHEET NO.
804	25R,TS	CHAMPAIGN	19	19

CONTRACT NO. 70476

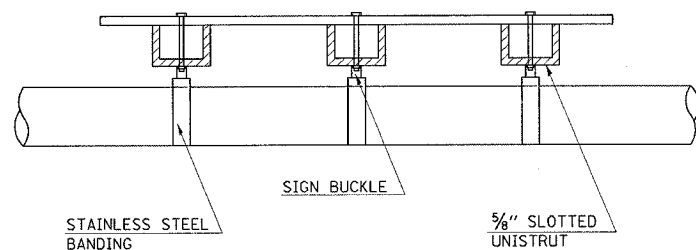
MAST ARM DAMPENING DEVICE MOUNTING DETAIL



PLAN VIEW

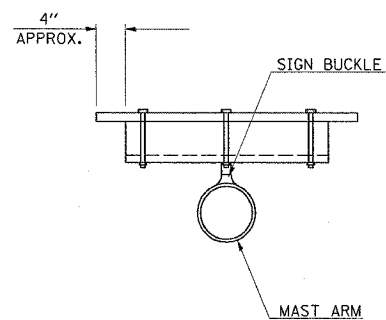


DETAIL OF SERVICE INSTALLATION, TYPE B (MODIFIED)

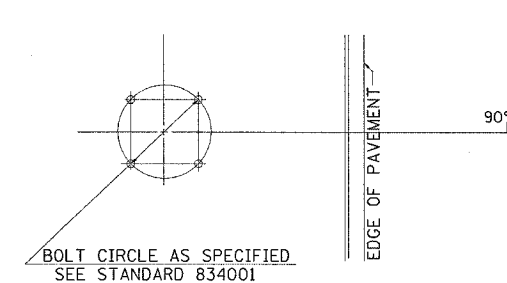


ELEVATION

NOTE: PAINT ENDS OF UNISTRUT WITH SPRAY ON GALVANIZED PAINT



CROSS SECTION



DETAIL OF MAST ARM FOUNDATION BOLT PATTERN