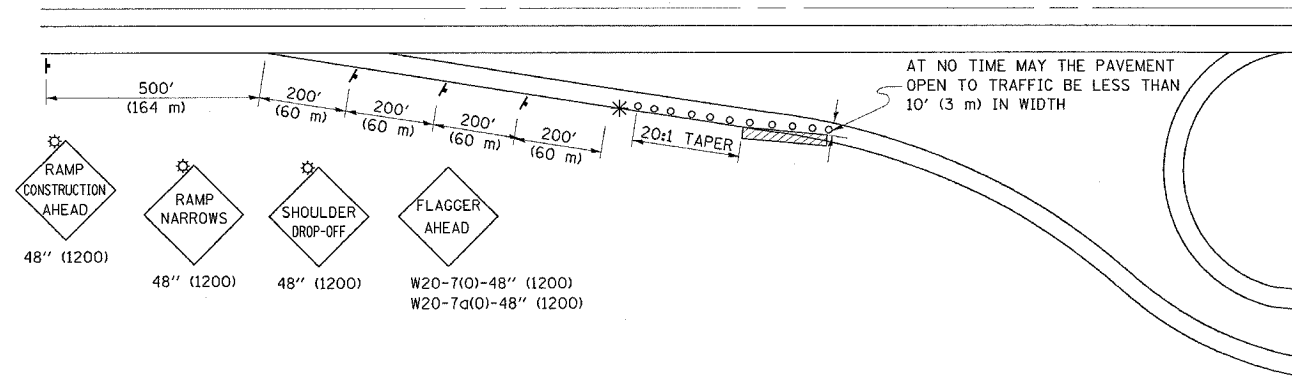


F.A.I. RTE.	SECTION	COUNTY	TOTAL SHEETS	SHEET NO.
74	*	VERMILION	13	8

\*92(11,12,12-URS-1,I

### SPECIAL DETAIL FOR RAMP WORK AREAS

TYPICAL APPLICATION OF TRAFFIC CONTROL DEVICES



#### SYMBOLS

- TYPE I OR II BARRICADES OR DRUMS @ 50' (15 m) CTS.
- \* FLAGGER PLACED AS DIRECTED BY THE ENGINEER DURING DAYTIME CONSTRUCTION
- † SIGN ON PORTABLE OR PERMANENT SUPPORT
- ▨ WORK AREA
- ⊛ FLASHING LIGHT

#### GENERAL NOTES

1. CONSTRUCTION OPERATIONS SHALL BE CONFINED TO AN AREA NARROW ENOUGH THAT A MINIMUM OF 10' (3 m) OF PAVEMENT SHALL BE OPEN TO TRAFFIC AT ALL TIMES.
2. CONES MAY BE SUBSTITUTED FOR BARRICADES DURING DAY OPERATIONS, AT 25' (7.5 m) SPACING.
3. FLASHING LIGHTS REQUIRED ON SIGNS IF DROP-OFF EXISTS DURING NON-WORKING HOURS.
4. WHEN NO WORK IS BEING PERFORMED, THE FLAGGER WILL NOT BE REQUIRED. IF THE FLAGGER IS NOT PRESENT, THE FLAGGER SIGNS SHALL BE REMOVED OR COVERED.
5. ALL SIGNS SHALL BE POST MOUNTED IF WORK IN THE AREA EXCEEDS FOUR DAYS OF DAYTIME OPERATIONS.
6. LONGITUDINAL DIMENSIONS MAY BE ADJUSTED SLIGHTLY TO FIT FIELD CONDITIONS.
7. ALL VEHICLES, EQUIPMENT, WORKERS (EXCEPT FLAGGER) AND THEIR ACTIVITIES ARE RESTRICTED AT ALL TIMES TO ONE SIDE OF THE PAVEMENT UNLESS OTHERWISE AUTHORIZED BY THE DISTRICT ENGINEER.
8. TYPE I OR II BARRICADES, VERTICAL BARRICADES, OR DRUMS WITH LIGHTS REQUIRED TO MARK HAZARD DROP-OFF.

#### REVISIONS

D.L.P.	NAME	DATE
3-95		08/00
F-5.01	K.A.G.	01/05

ALL DIMENSIONS ARE IN INCHES (MILLIMETERS) UNLESS OTHERWISE SHOWN.