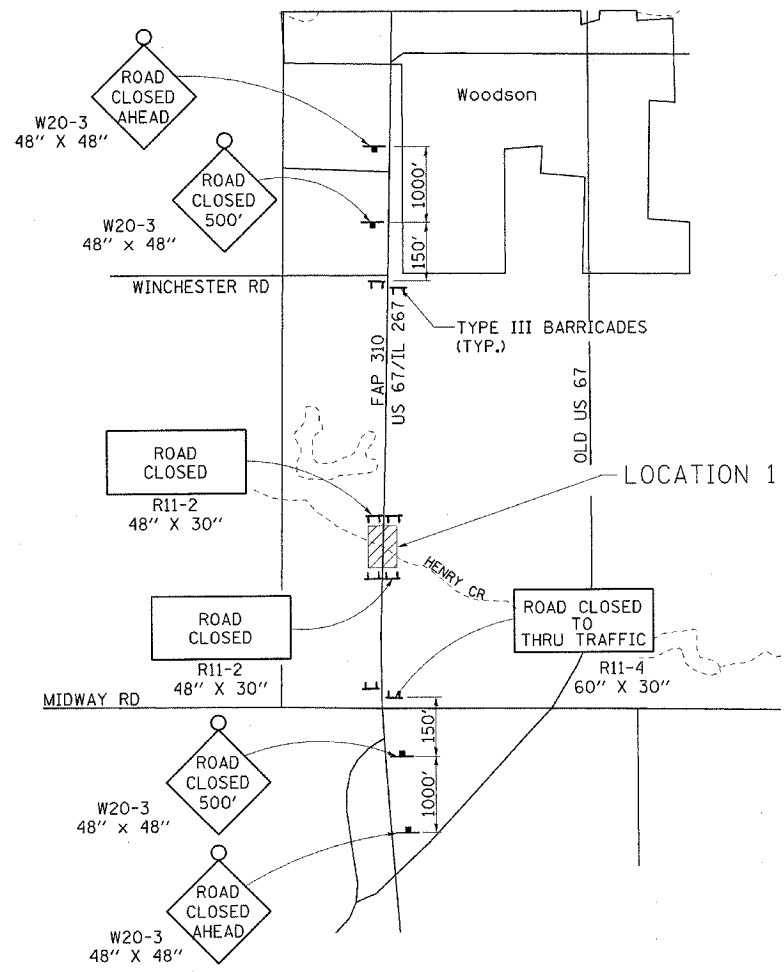
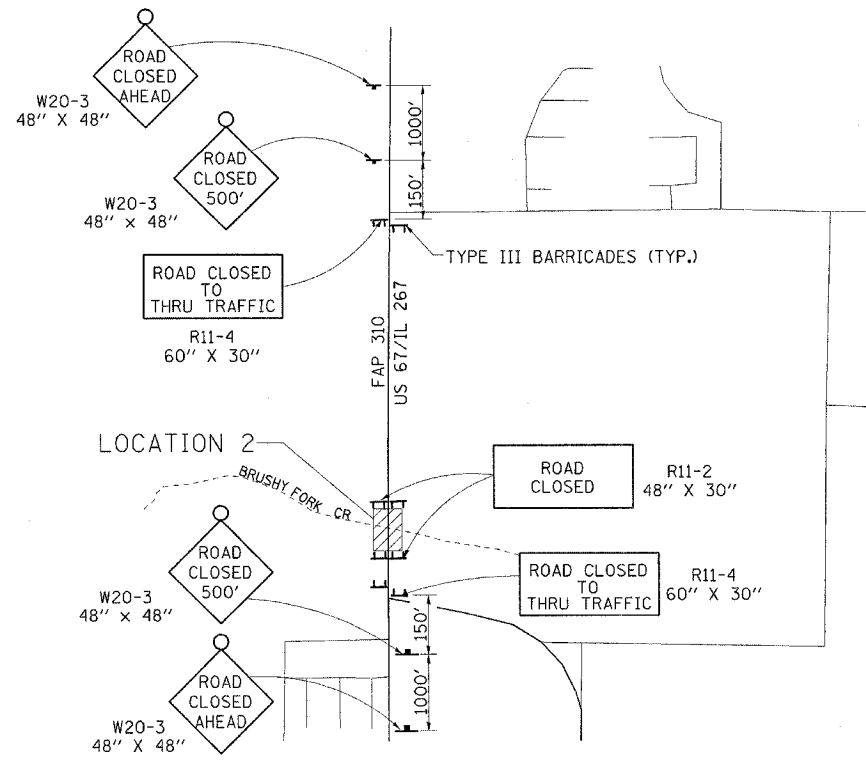


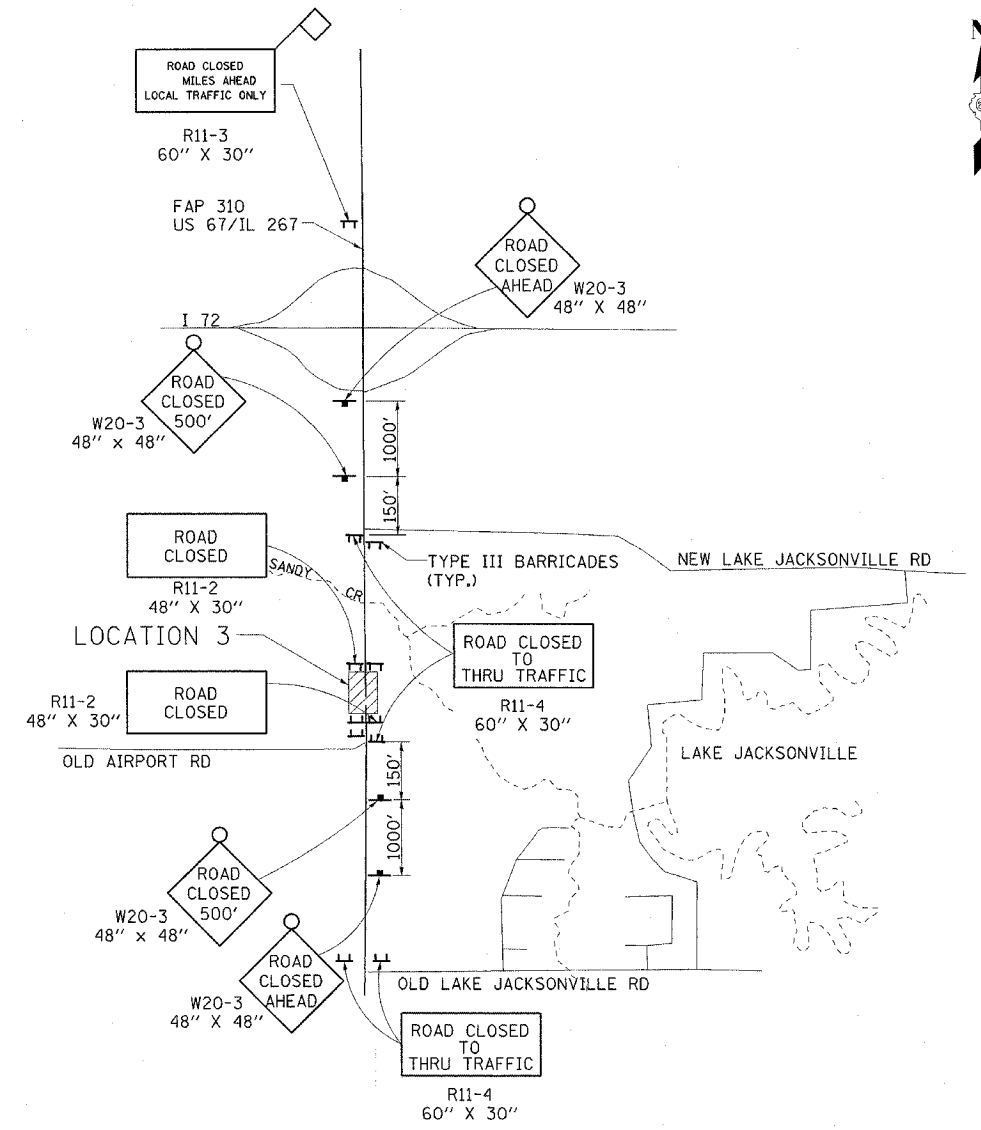
F.A.P. RTE.	SECTION	COUNTY	TOTAL SHEETS	SHEET NO.
310	81B-1	MORGAN	114	17
STA.		TO STA.		
CONTRACT NO. 72528				



LOCATION 1 DETAIL

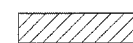


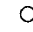


LOCATION 2 DETAIL



LOCATION 3 DETAIL

LEGEND

-  WORK AREA
-  SIGN
-  TYPE III BARRICADES WITH R11-2 4830
-  TYPE A FLASHING LIGHT

REVISIONS	
NAME	DATE
TMJ	08-05-05

ILLINOIS DEPARTMENT OF TRANSPORTATION  
**ROAD CLOSURE DETAIL**  
 FAP ROUTE 310 (US 67/IL 267)  
 SECTION 81B-1  
 MORGAN COUNTY

SCALE: \_\_\_\_\_ DATE \_\_\_\_\_ DRAWN BY BANDY  
 CHECKED BY STEUART