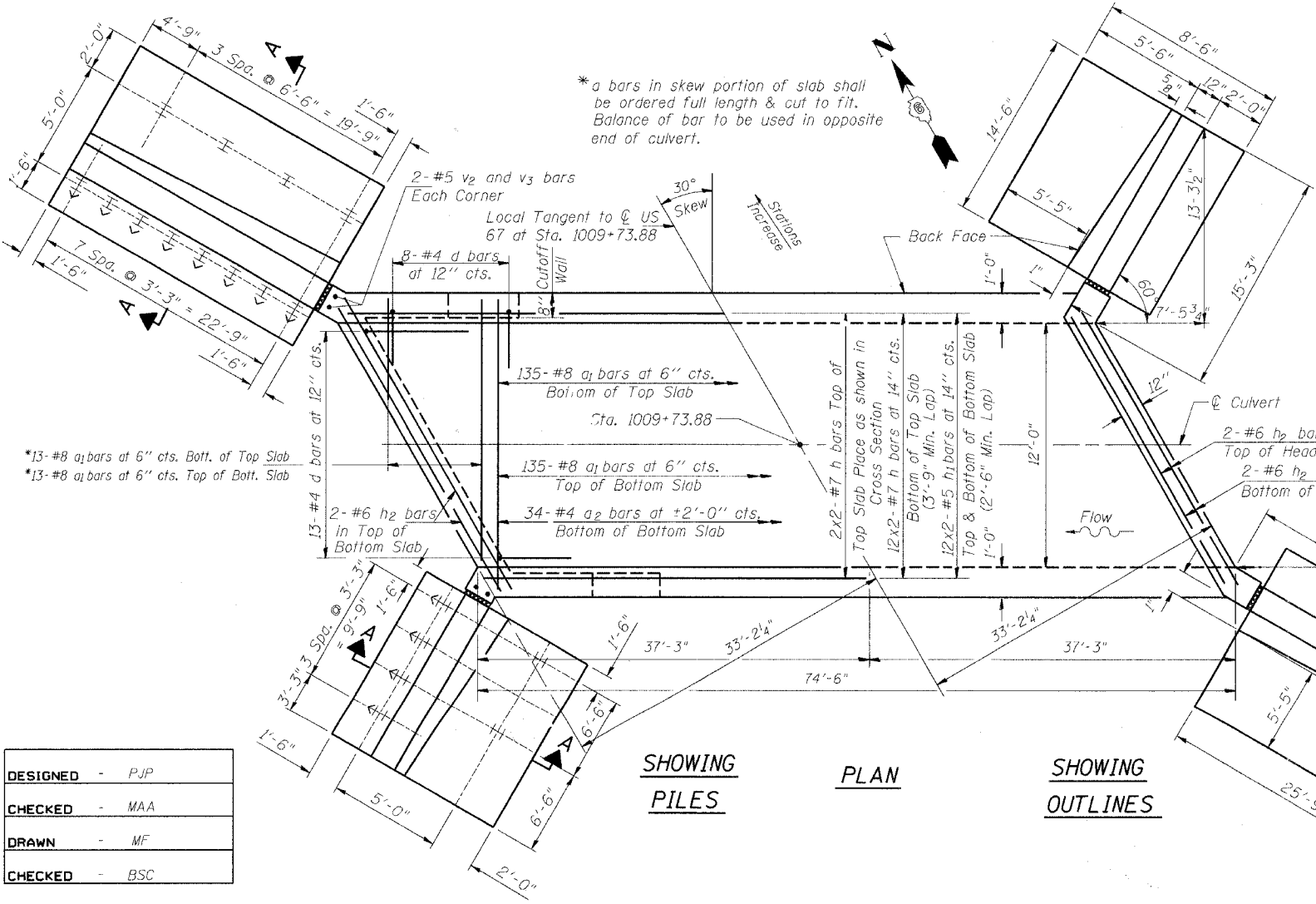
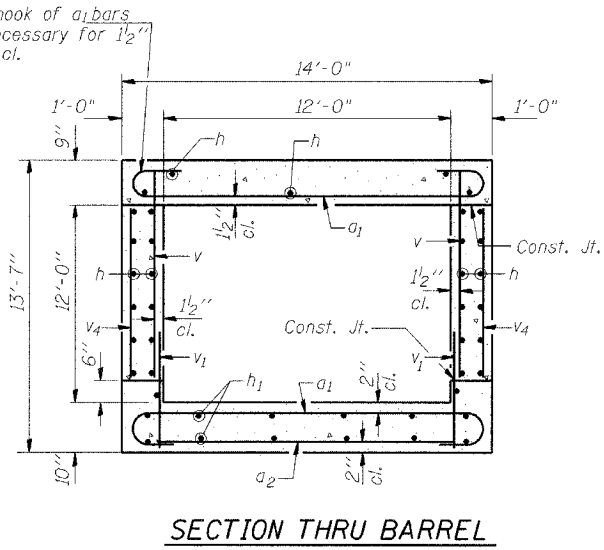
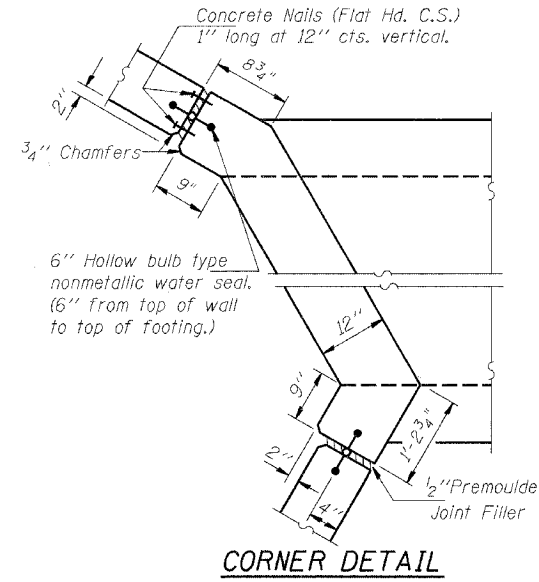
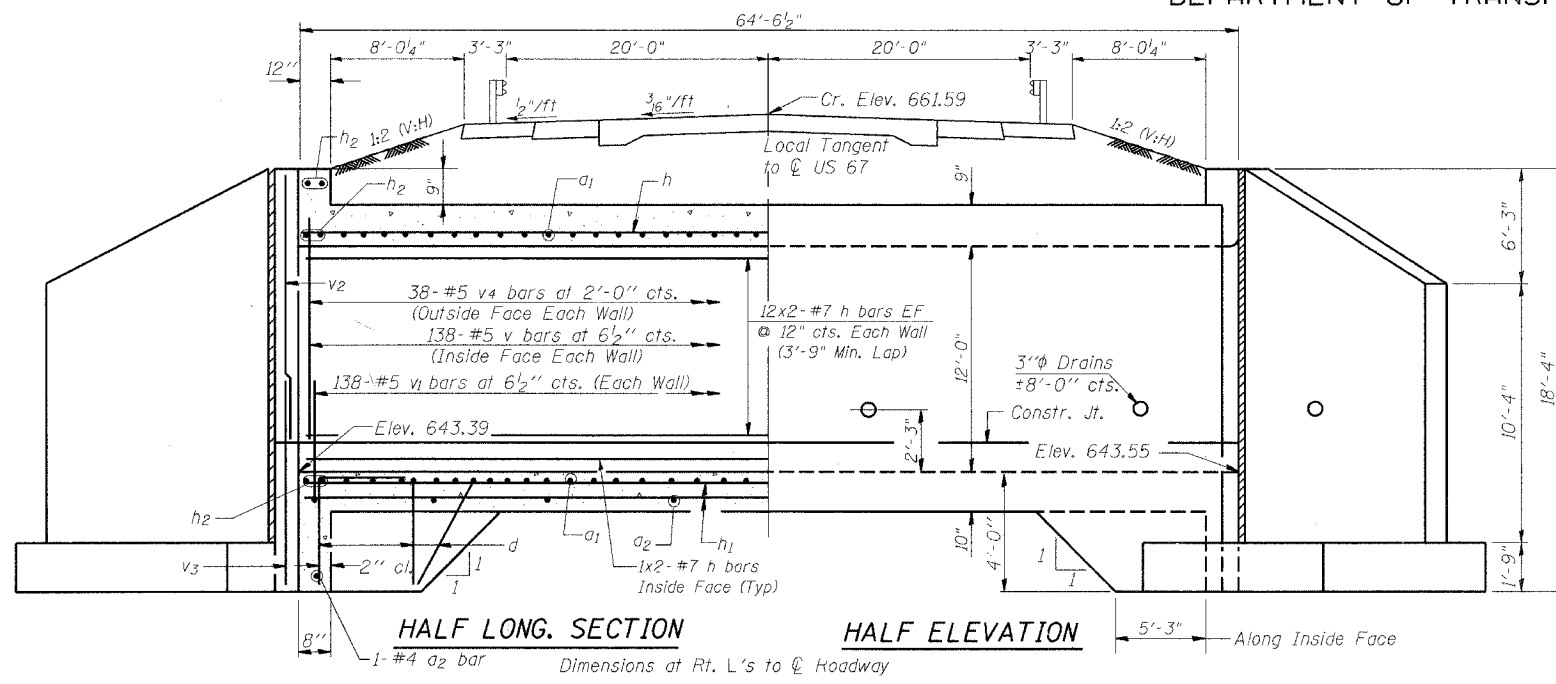


STATE OF ILLINOIS
DEPARTMENT OF TRANSPORTATION

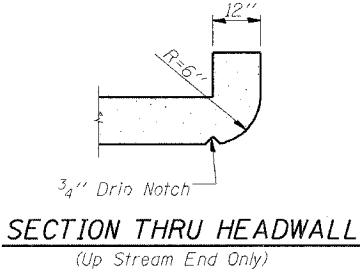
ROUTE NO. FAP 164	SECTION 81B-1	COUNTY MORGAN	SHEET NO. 114	SHEET 40	SHEET NO. 1 2 SHEETS
FED. ROAD DIST. NO. 6		ILLINOIS		FED. AID PROJECT	



DESIGNED	- PJP
CHECKED	- MAA
DRAWN	- MF
CHECKED	- BSC

NOTES

Reinforcement Bars shall conform to the requirements of AASHTO M-31, M-42 or M-53, Grade 60.
Bars indicated thus 12 x 4-#5 etc. indicates 12 lines of bars with 4 lengths per line.
Reinforcement bars designated (E) shall be epoxy coated.
All construction joints shall be bonded.
For section A-A see sheet 2 of 2.
Removal and replacement of weak soils with Rockfill-foundation may be required beneath the culvert. The Engineer will determine the required depth following excavation to plan grade.



APPROVED
FOR STRUCTURAL ADEQUACY ONLY
Ralph E. Anderson (TJD)
ENGINEER OF BRIDGES AND STRUCTURES



Michael Bellano 11-10-04
Illinois Structural No. 081-005084
Exp. 11/30/06

DESIGN STRESSES
fy = 60,000 psi
f'c = 3,500 psi

LOADING HS 20-44 & ALT.

PLANS PREPARED BY:
WOOLPERT LLP
345 Fountains Pkwy, Suite A
Fairview Heights, IL
62208-2044
618.632.7004
FAX: 618.632.0100

STATE OF ILLINOIS
DEPARTMENT OF TRANSPORTATION
US ROUTE 67 OVER
HENRY CREEK
FAP 164 - SECTION 81B-1
MORGAN COUNTY
STATION 1009+73.88
CULVERT PLAN LONGITUDINAL SECTION
AND DETAILS