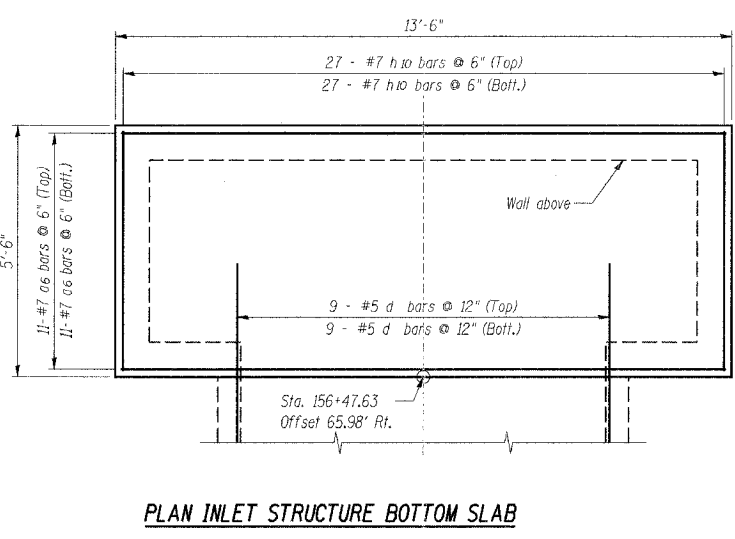
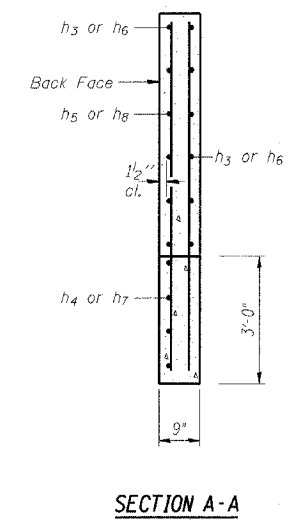
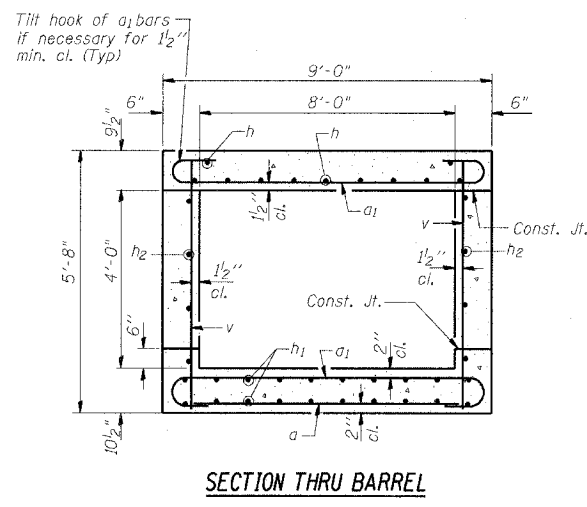
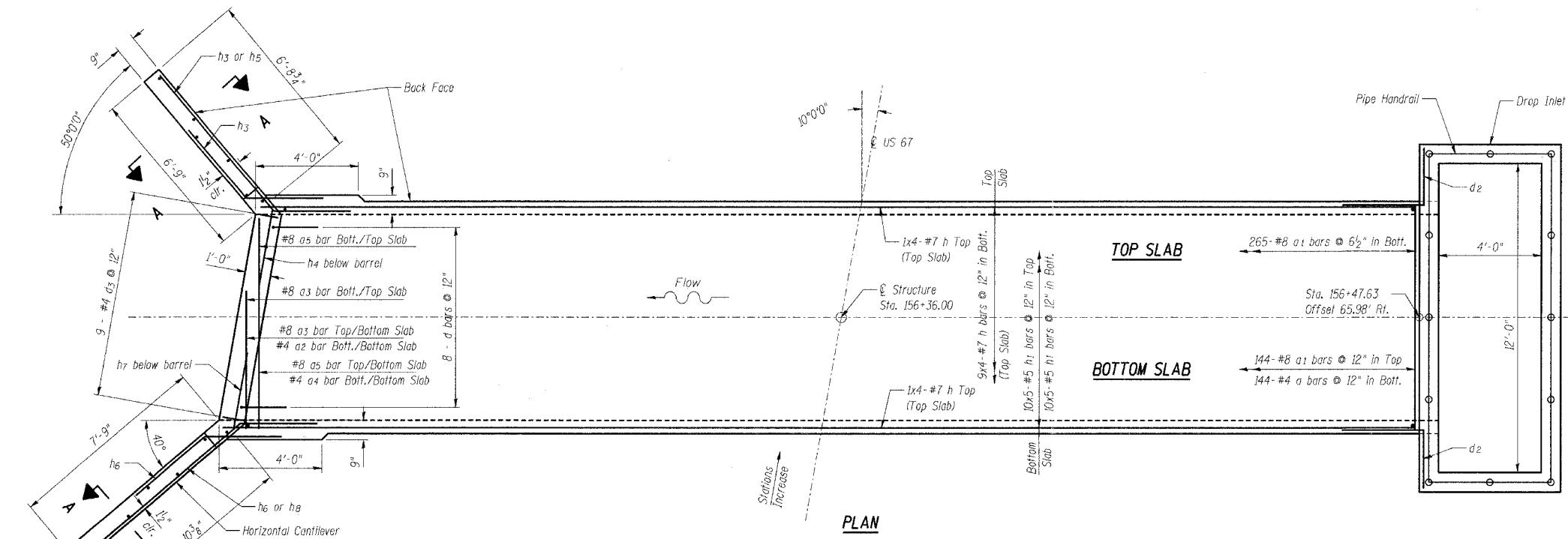
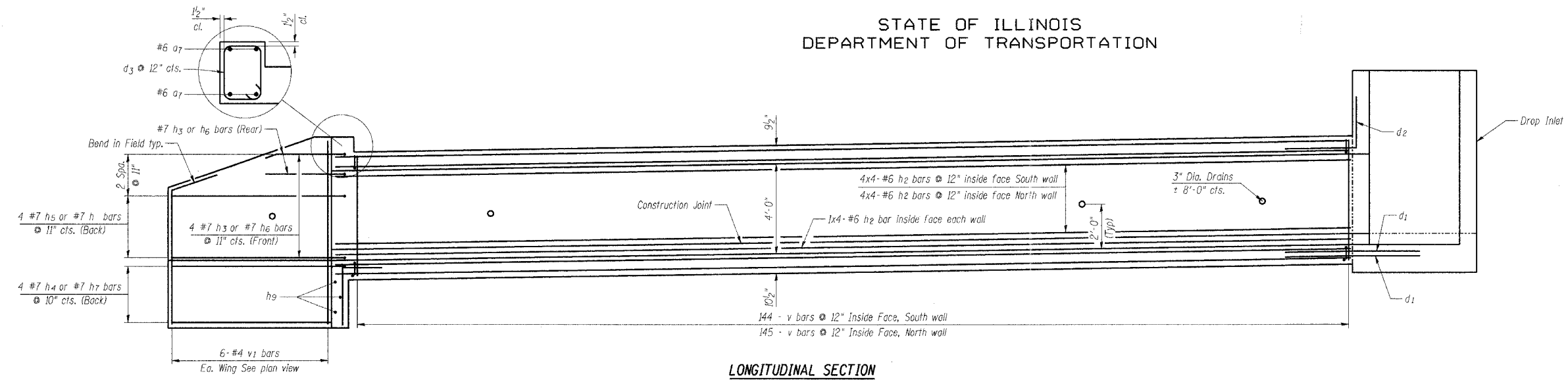


STATE OF ILLINOIS  
DEPARTMENT OF TRANSPORTATION

ROUTE NO.	SECTION	COUNTY	STATION	SHEET	SHEET NO. 2 3 SHEETS
FAP 164	81B-1	MORGAN	141	50	
FED. ROAD DIST. NO. 9	ILLINOIS	FED. AID PROJECT-			



DESIGNED	- PJP
CHECKED	- MAA
DRAWN	- MF
CHECKED	- BSC

**NOTES:**  
All construction joints shall be bonded.  
For Drop Inlet details, see Sheet 3 of 3.

PLANS PREPARED BY:  
**WOOLPERT** LLP  
345 Fountains Pkwy, Suite A  
Fairview Heights, IL  
62208-2044  
618.632.7004  
FAX: 618.632.0100

STATE OF ILLINOIS  
DEPARTMENT OF TRANSPORTATION  
US ROUTE 67 OVER  
TRIBUTARY TO SANDY CREEK  
FAP 164 - SECTION 81B-1  
MORGAN COUNTY  
STATION 156+36.00  
CULVERT PLAN, LONGITUDINAL SECTION  
AND DETAILS