

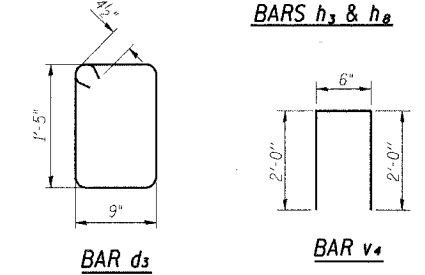
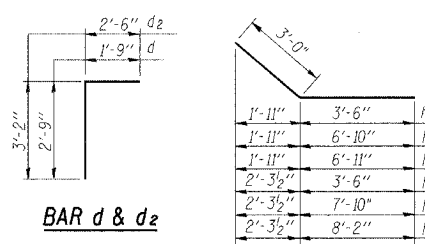
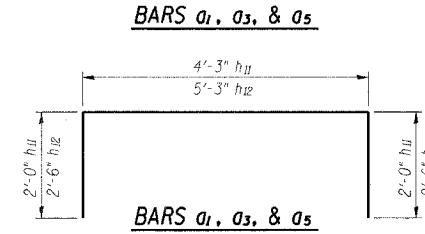
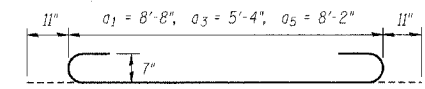
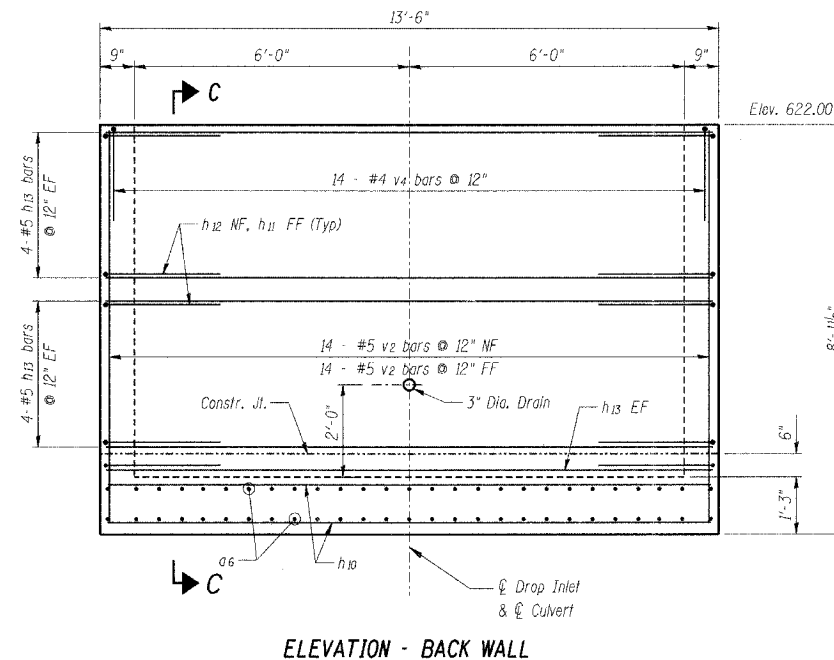
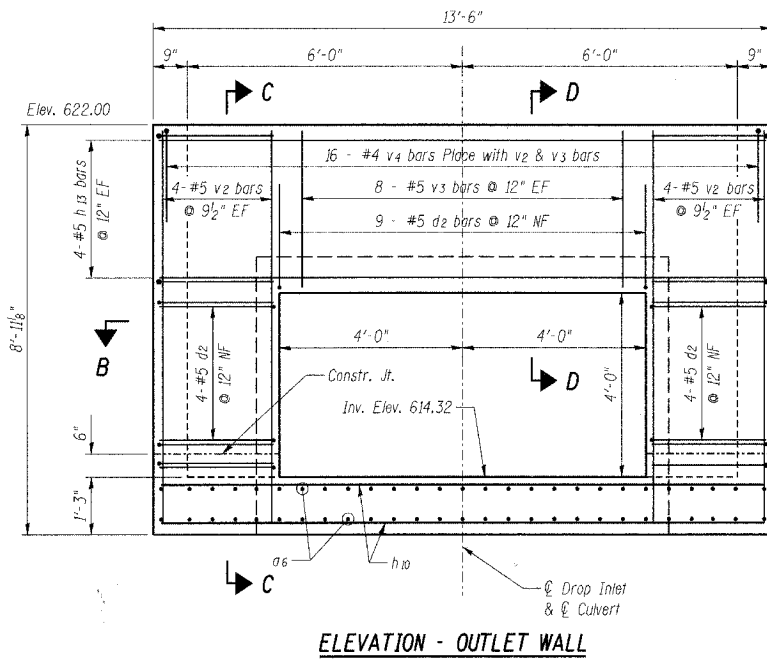
STATE OF ILLINOIS
DEPARTMENT OF TRANSPORTATION

ROUTE NO. FAP 164	SECTION 81B-1	COUNTY MORGAN	TOTAL SHEETS 141	SHEET NO. 51
FED. ROAD DIST. NO. 6		ILLINOIS FED. AID PROJECT		

SHEET NO. 3
3 SHEETS

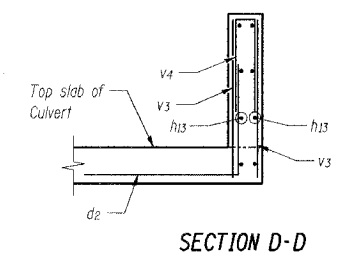
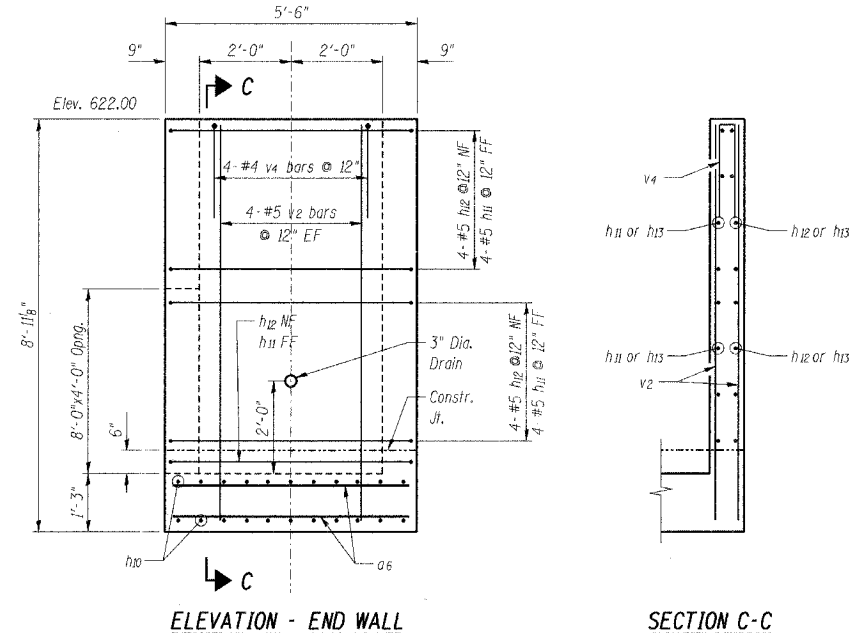
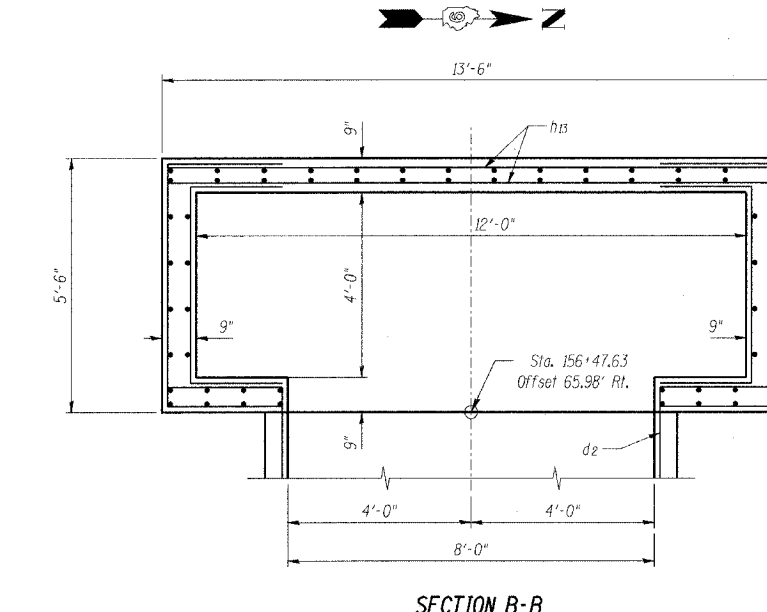
BILL OF MATERIAL

Bar	No.	Size	Length	Shape
a	144	#4	8'-9"	
a1	409	#8	10'-6"	
a2	1	#4	5'-4"	
a3	2	#8	7'-2"	
a4	1	#4	7'-2"	
a5	2	#8	10'-0"	
a6	22	#7	13'-3"	
a7	4	#6	8'-2"	
d	8	#5	4'-4"	
d1	18	#5	6'-0"	
d2	16	#5	5'-8"	
d3	9	#4	5'-1"	
h	44	#7	32'-0"	
h1	100	#5	31'-0"	
h2	42	#6	31'-5"	
h3	6	#7	6'-6"	
h4	4	#7	9'-10"	
h5	4	#7	9'-11"	
h6	6	#7	6'-6"	
h7	4	#7	10'-10"	
h8	4	#7	11'-2"	
h9	3	#6	8'-7"	
h10	54	#7	5'-3"	
h11	18	#5	8'-3"	
h12	18	#5	10'-3"	
h13	24	#5	13'-3"	
v	289	#5	5'-4"	
v1	12	#4	8'-1"	
v2	60	#5	8'-7"	
v3	16	#5	3'-5"	
v4	38	#4	4'-6"	
Concrete Box Culverts		Cu. Yd.	116	
Reinforcement Bars		Pound	25600	
Pipe Handrail		Ft.	35	



BAR d3

BAR v4



SECTION D-D

DESIGNED	-	PJP
CHECKED	-	MAA
DRAWN	-	MF
CHECKED	-	B5C

NOTES:
All construction joints shall be bonded.

PLANS PREPARED BY:
WOOLPERT LLP
345 Fountains Pkwy, Suite A
Fairview Heights, IL
62208-2044
618.632.7004
FAX: 618.632.0100

STATE OF ILLINOIS
DEPARTMENT OF TRANSPORTATION
US ROUTE 67 OVER
TRIBUTARY TO SANDY CREEK
FAP 164 - SECTION 81B-1
MORGAN COUNTY
STATION 156+36.00
CULVERT PLAN, LONGITUDINAL SECTION
AND DETAILS