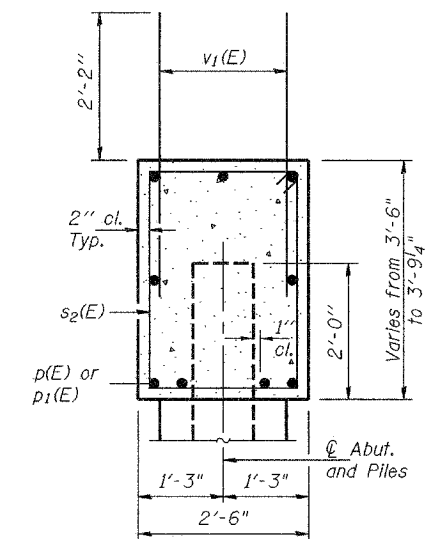
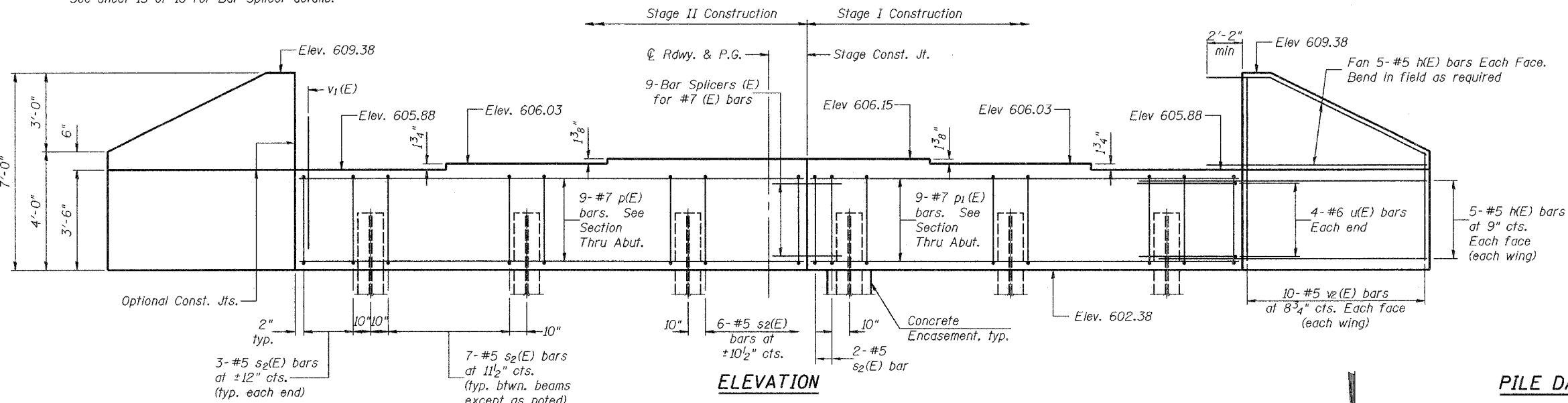


STATE OF ILLINOIS
DEPARTMENT OF TRANSPORTATION

ROUTE NO.	SECTION	COUNTY	TOTAL SHEETS	SHEET NO.	SHEET NO. 13
F.A.P. 310	81B-1	MORGAN	114	64	16 SHEETS
FED. ROAD DIST. NO. 7	ILLINOIS	FED. AID PROJECT-			

Contract #72528

Notes: Pour steps monolithically with cap.
Reinforcement bars designated (E) shall be epoxy coated.
See sheet 15 of 16 for Bar Splicer details.

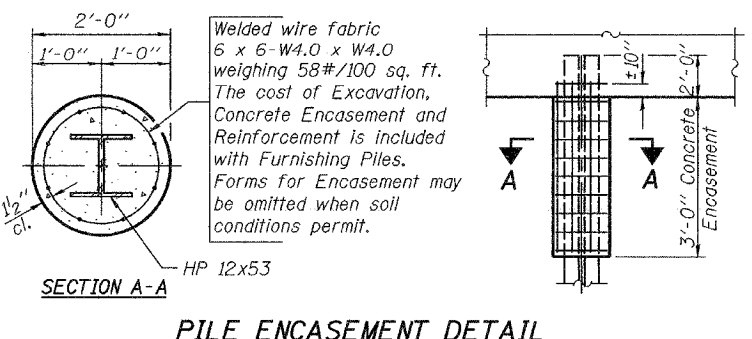
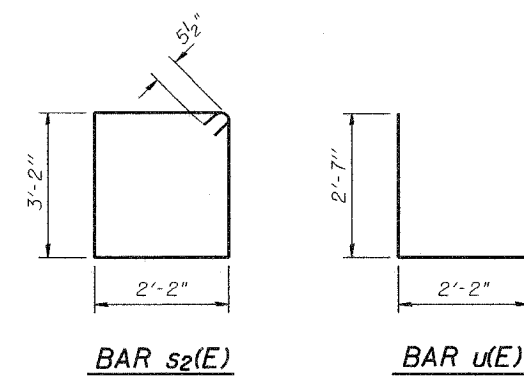
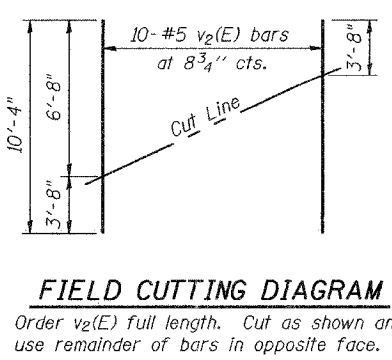
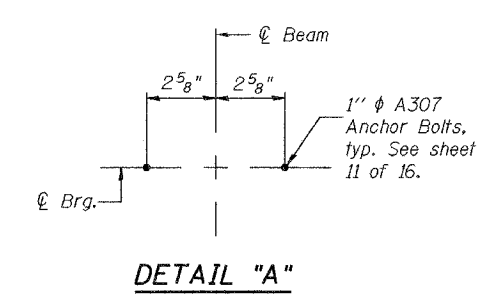
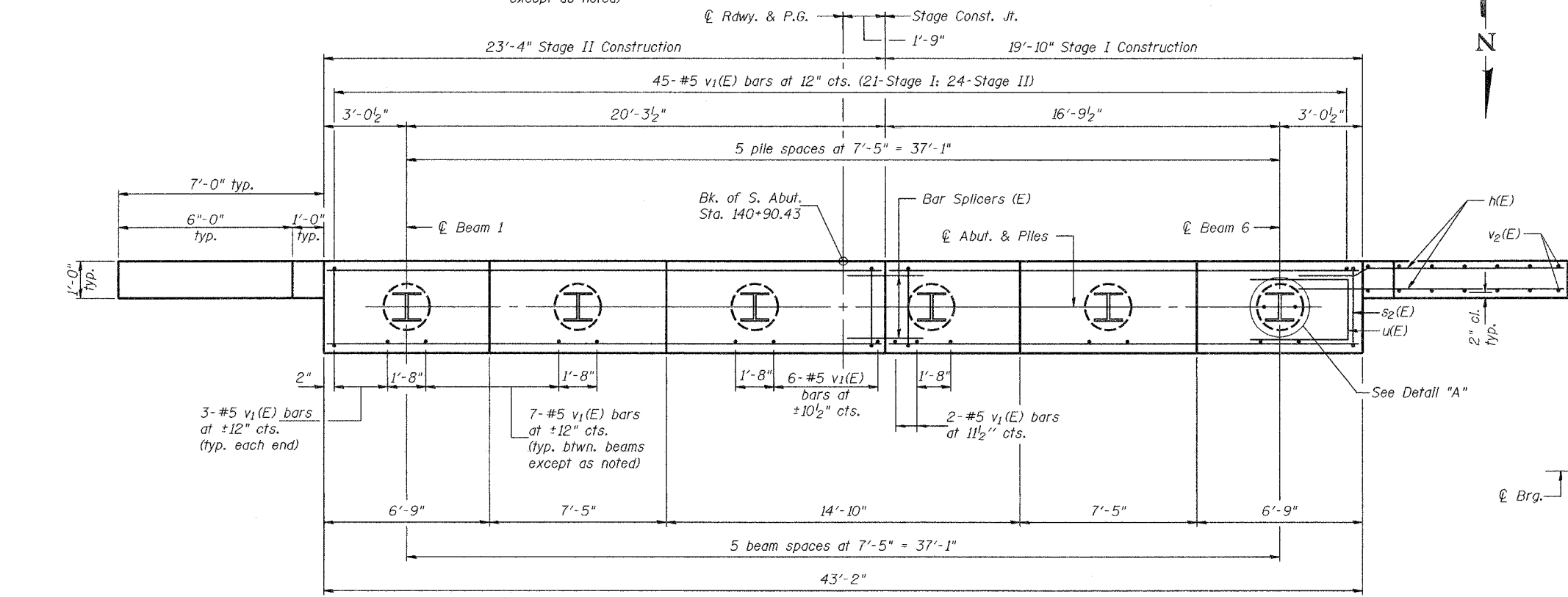


PILE DATA

Type: HP12x53
Capacity: Driven to Refusal
Est. Length: 35'
No. Required: 5 + 1 test pile

BILL OF MATERIAL

Bar	No.	Size	Length	Shape	
h(E)	40	#5	11'-7"		
p(E)	9	#7	23'-0"		
p1(E)	9	#7	19'-6"		
s2(E)	42	#5	11'-7"	□	
u(E)	8	#6	7'-4"	□	
v1(E)	87	#5	4'-4"		
v2(E)	20	#5	10'-4"		
Concrete Structures				Cu. Yd.	17.6
Reinforcement Bars, Epoxy Coated				Pound	2470
Structure Excavation				Cu. Yd.	45.6
Furnishing Steel					
Piles HP12 x 53				Lin. Ft.	175
Driving Steel Piles				Lin. Ft.	175
Test Pile Steel HP12x53				Each	1



SOUTH ABUTMENT
F.A.P. ROUTE 310 - SECTION 81B-1
MORGAN COUNTY
STATION 140+34.43
STRUCTURE NO. 069-0504

DESIGNED	A.B.G.
CHECKED	W.A.B.
DRAWN	θMC Frank Lowry
CHECKED	A.B.G & W.A.B.

September 30, 2005

EXAMINED *Thomas J. Damagala*
ENGINEER OF BRIDGE DESIGN

PASSED *Ralph E. Anderson*
ENGINEER OF BRIDGES AND STRUCTURES