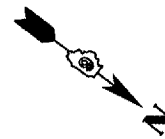


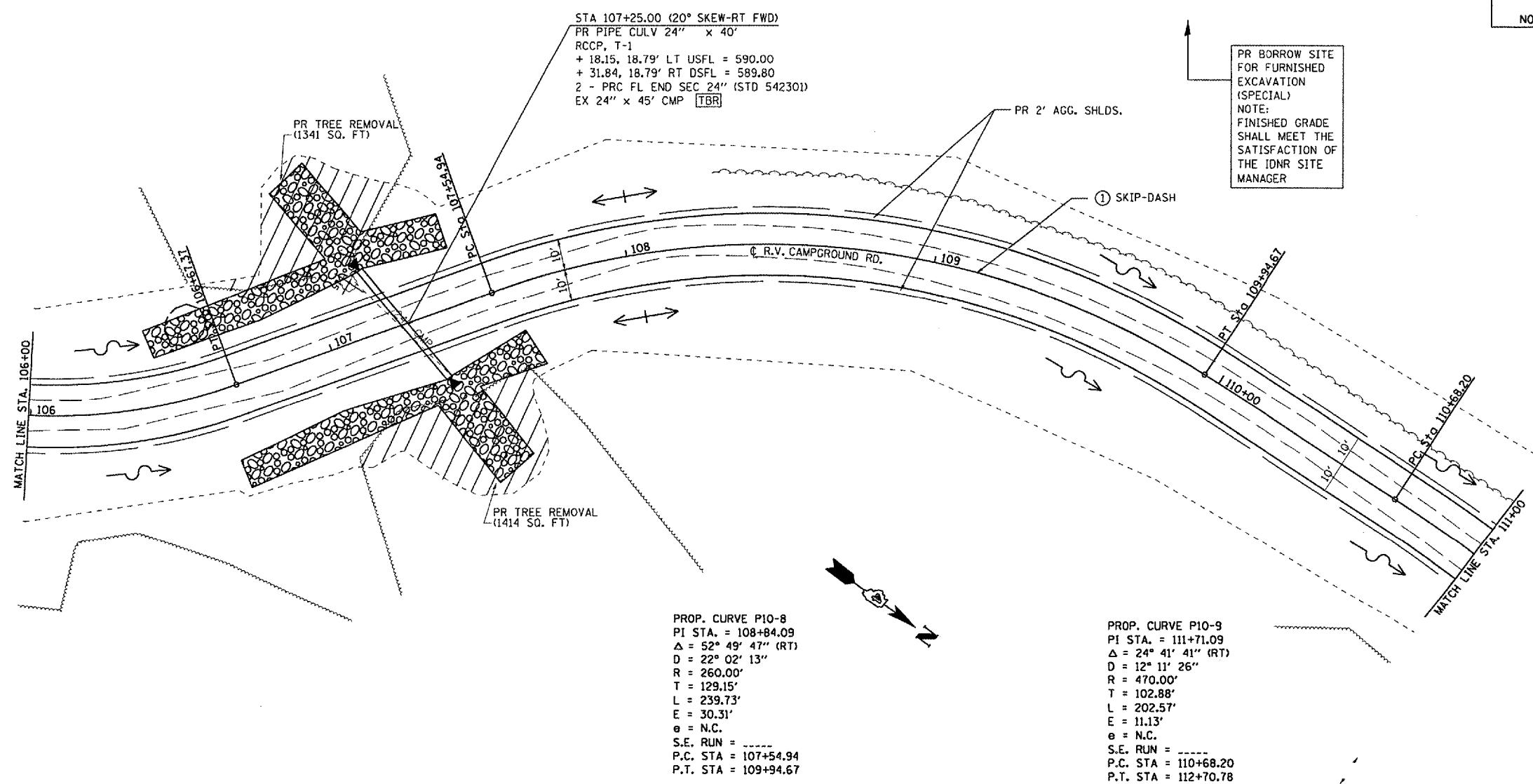
F.A. RTE.	SECTION	COUNTY	TOTAL SHEETS	SHEET NO.
*	**	SCHUYLER	139	25
STA.		TO STA.		
FED. ROAD DIST. NO.		ILLINOIS FED. AID PROJECT		
* OTHER ROUTE 1 (WEINBERG KING STATE PARK)				
** WEIN KING ST PK INT ROS 2				



PAVEMENT MARKING LEGEND

- ① PREFORMED PLASTIC PAVEMENT MARKING - LINE 5" (YELLOW)
- ② PREFORMED PLASTIC PAVEMENT MARKING - LINE 8" (YELLOW) @ 5' CTS.
- ③ PREFORMED PLASTIC PAVEMENT MARKING - LINE 24" (WHITE)
- ④ PREFORMED PLASTIC PAVEMENT MARKING - LETTERS & SYMBOLS (WHITE)

NOTE : NO PROPOSED EDGE LINE STRIPING, EXCEPT AS CALLED OUT.



PLOT DATE = 8/24/2005
 PLOT SCALE = 41.3705' / IN.
 USER NAME = hembd

REVISIONS	
NAME	DATE

ILLINOIS DEPARTMENT OF TRANSPORTATION

PLAN VIEW

WEINBERG KING STATE PARK

SCALE: VERT. _____
 HORIZ. _____
 DATE _____

DRAWN BY BOK
 CHECKED BY JCN