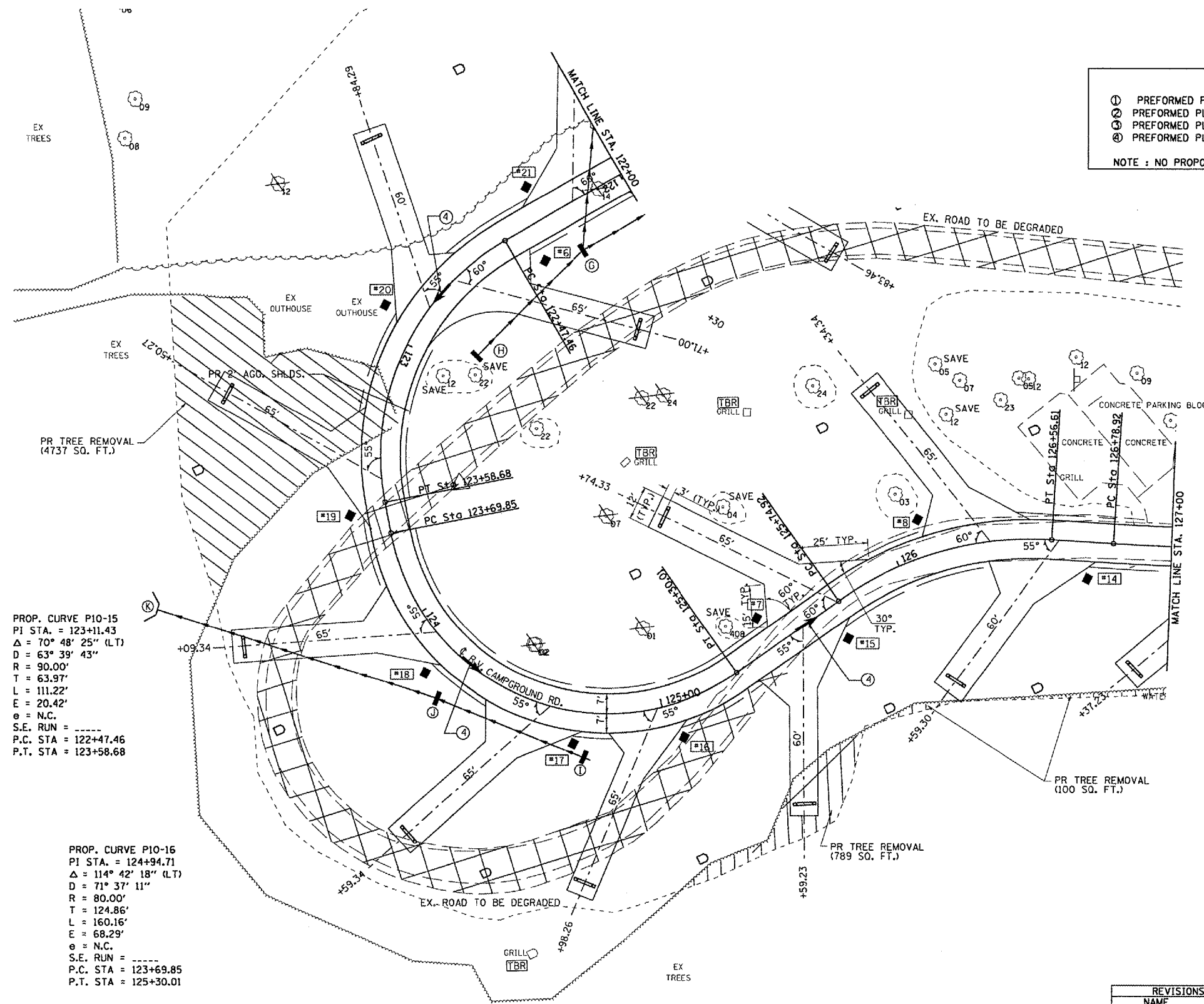


F.A. RTE.	SECTION	COUNTY	TOTAL SHEETS	SHEET NO.
.	**	SCHUYLER	139	31
STA.		TO STA.		
FED. ROAD DIST. NO.	ILLINOIS	FED. AID PROJECT		
* OTHER ROUTE 1 (WEINBERG KING STATE PARK)				
** WEIN KING ST PK INT RDS 2				

- PR. FIRE RING GRILL
- PR. CAMP PAD MARKERS

- PAVEMENT MARKING LEGEND**
- ① PREFORMED PLASTIC PAVEMENT MARKING - LINE 5" (YELLOW)
  - ② PREFORMED PLASTIC PAVEMENT MARKING - LINE 8" (YELLOW) @ 5' CTS.
  - ③ PREFORMED PLASTIC PAVEMENT MARKING - LINE 24" (WHITE)
  - ④ PREFORMED PLASTIC PAVEMENT MARKING - LETTERS & SYMBOLS (WHITE)
- NOTE : NO PROPOSED EDGE LINE STRIPING, EXCEPT AS CALLED OUT.



PROP. CURVE P10-15  
 PI STA. = 123+11.43  
 Δ = 70° 48' 25" (LT)  
 D = 63° 39' 43"  
 R = 90.00'  
 T = 63.97'  
 L = 111.22'  
 E = 20.42'  
 θ = N.C.  
 S.E. RUN = -----  
 P.C. STA = 122+47.46  
 P.T. STA = 123+58.68

PROP. CURVE P10-16  
 PI STA. = 124+94.71  
 Δ = 114° 42' 18" (LT)  
 D = 71° 37' 11"  
 R = 80.00'  
 T = 124.86'  
 L = 160.16'  
 E = 68.29'  
 θ = N.C.  
 S.E. RUN = -----  
 P.C. STA = 123+69.85  
 P.T. STA = 125+30.01

- 1-PR CONC. HDWL. FOR PIPE DRAIN
- ① 88.0' RT STA 123+75.00 DSFL = 591.55
- 4-PR INLET, T-A W/T-8G (STD 602301 & 604036)
- ② 17.0' LT STA 122+50.00 TOG=591.00 INV.=589.58 (16")
- ③ 17.0' LT STA 122+90.00 TOG=591.40 INV.=589.98 (16")
- ④ 24.0' RT STA 124+75.00 TOG=598.10 INV.=596.68 (16")
- ⑤ 17.0' RT STA 124+25.00 TOG=596.70 INV.=595.28 (16")
- PR PIPE DRAIN 8" x 233.0 FEET
- ⑥ -⑦ =65.0 FEET @ +0.62%
- ⑧ -⑨ =58.0 FEET @ -2.41%
- ⑩ -⑪ =110.0 FEET @ -3.39%

PLOT DATE = 6/24/2006  
 PLOT SCALE = 43.375' / IN.  
 USER NAME = kenwad

REVISIONS	
NAME	DATE

ILLINOIS DEPARTMENT OF TRANSPORTATION

**PLAN VIEW**

WEINBERG KING STATE PARK

SCALE: VERT. \_\_\_\_\_  
 HORIZ. \_\_\_\_\_

DATE \_\_\_\_\_ DRAWN BY BOK  
 CHECKED BY JCN