

F.A. RTE.	SECTION	COUNTY	TOTAL SHEETS	SHEET NO.
.	**	SCHUYLER	139	35
STA.		TO STA.		
FED. ROAD DIST. NO.		ILLINOIS FED. AID PROJECT		

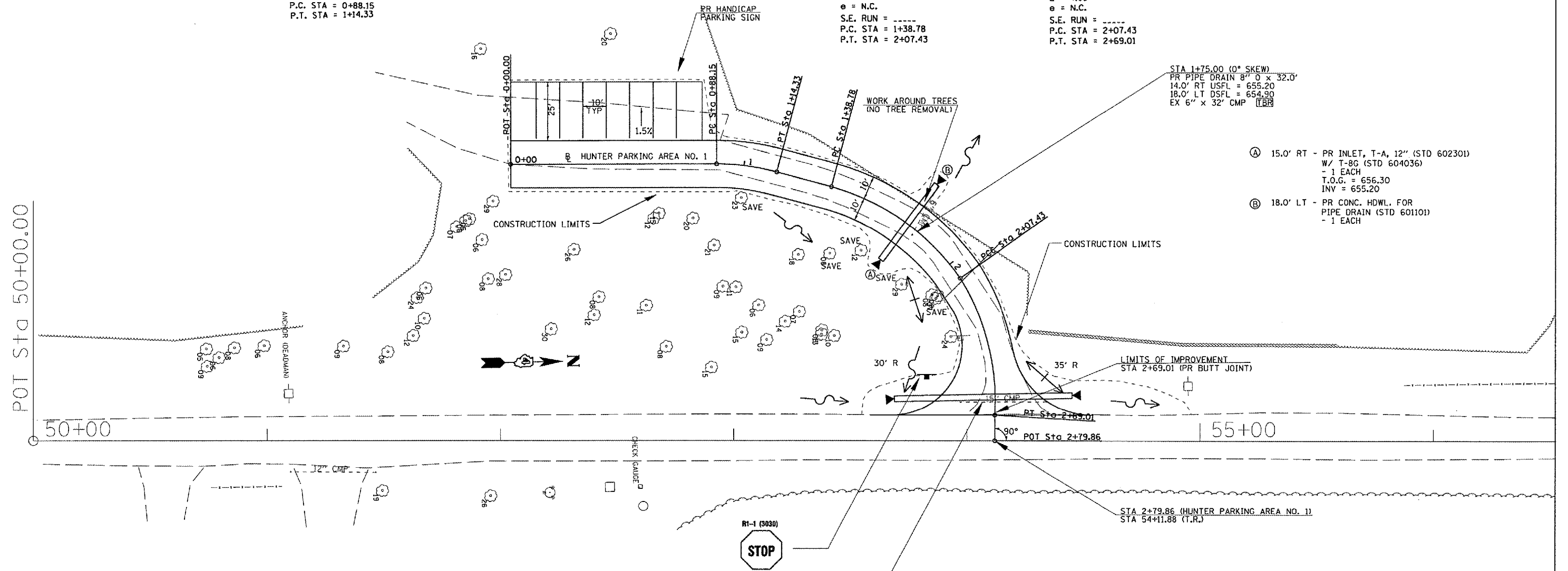
- WEINBERG KING STATE PARK
- WEINBERG KING ST. PK. INTERNAL ROADS #2

PROP. CURVE PHUNTER-1
 PI STA. = 1+01.31
 $\Delta = 14^\circ 59' 57''$ (RT)
 D = 57° 17' 45"
 R = 100.00'
 T = 13.16'
 L = 26.18'
 E = 0.86'
 e = N.C.
 S.E. RUN = -----
 P.C. STA = 0+88.15
 P.T. STA = 1+14.33

NOTE: NO PROPOSED PAVEMENT MARKINGS

PROP. CURVE PHUNTER-2
 PI STA. = 1+74.52
 $\Delta = 39^\circ 19' 52''$ (RT)
 D = 57° 17' 45"
 R = 100.00'
 T = 35.74'
 L = 68.65'
 E = 6.19'
 e = N.C.
 S.E. RUN = -----
 P.C. STA = 1+38.78
 P.T. STA = 2+07.43

PROP. CURVE PHUNTER-3
 PI STA. = 2+39.23
 $\Delta = 35^\circ 16' 58''$ (RT)
 D = 57° 17' 45"
 R = 100.00'
 T = 31.80'
 L = 61.58'
 E = 4.93'
 e = N.C.
 S.E. RUN = -----
 P.C. STA = 2+07.43
 P.T. STA = 2+69.01



- (A) 15.0' RT - PR INLET, T-A, 12" (STD 602301) W/ T-8G (STD 604036) - 1 EACH
 T.O.G. = 656.30
 INV = 655.20
- (B) 18.0' LT - PR CONC. HDWL. FOR PIPE DRAIN (STD 601101) - 1 EACH

STA 2+61.00 (0° SKEW)
 PR PIPE CULV 15" x 76.0'
 CS/A, TYPE 1
 33.0' LT USFL = 654.60
 43.0' RT DSFL = 654.80
 2-METAL END SEC, 15" (STD 542401)
 EX 15" x 40' CMP TBR

REVISIONS	
NAME	DATE

ILLINOIS DEPARTMENT OF TRANSPORTATION
PLAN VIEW
 WEINBERG KING STATE PARK
 SCALE: VERT. #NONE
 HORIZ. #NONE
 DATE
 DRAWN BY BDK
 CHECKED BY JCN

PLOT DATE = 8/24/2005
 FILE NAME = \\snp\pl\l\hnterparking.dgn
 PLOT SCALE = 43.3733 / IN.
 REFERENCE = #REF#