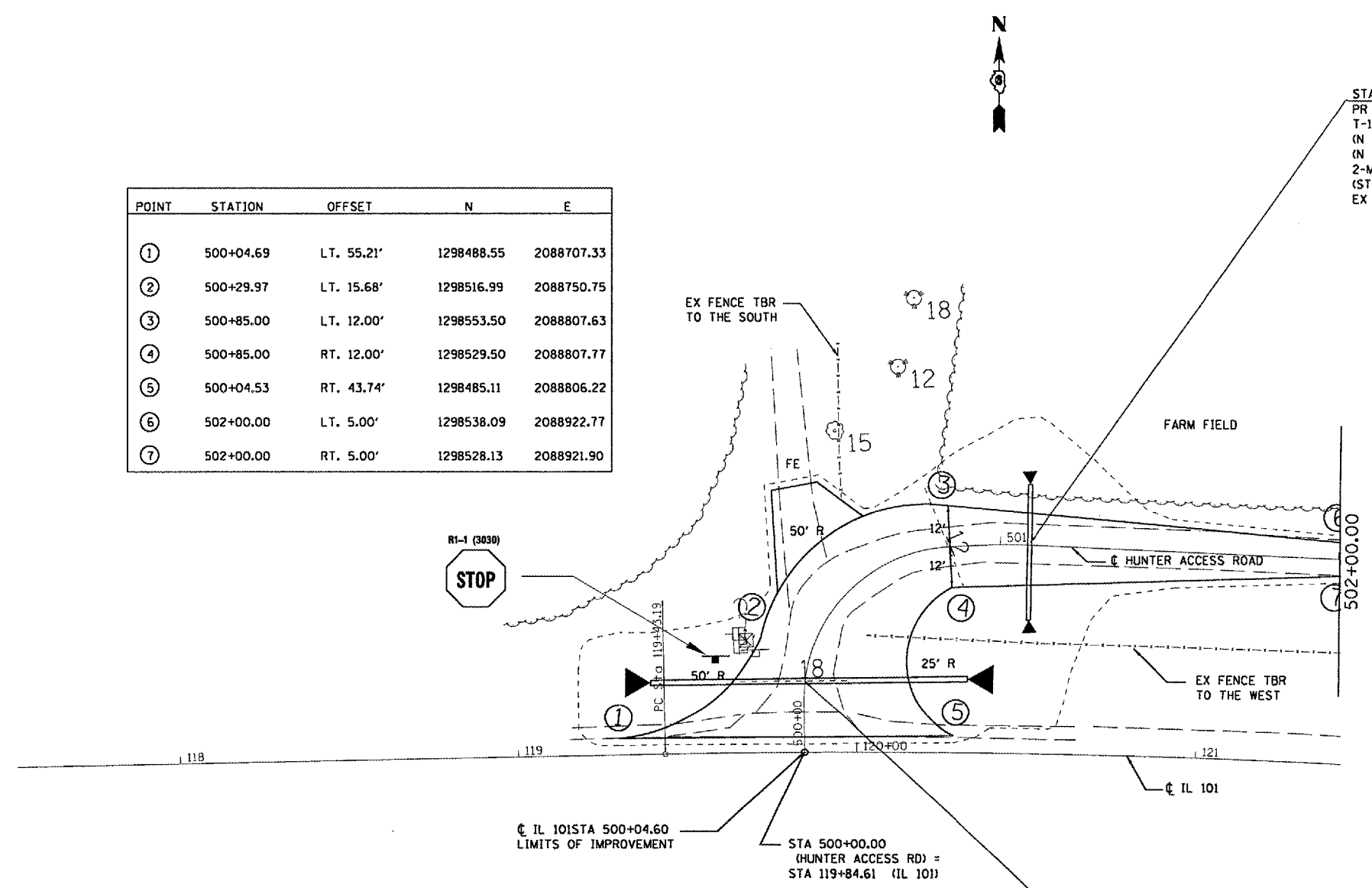


F.A. RTE.	SECTION	COUNTY	TOTAL SHEETS	SHEET NO.
*	**	SCHUYLER	139	36

STA.	TO STA.
FED. ROAD DIST. NO.	ILLINOIS FED. AID PROJECT

* OTHER ROUTE 1 (WEINBERG KING STATE PARK)
 ** WEIM KING ST PK INT RDS 2

POINT	STATION	OFFSET	N	E
①	500+04.69	LT. 55.21'	1298488.55	2088707.33
②	500+29.97	LT. 15.68'	1298516.99	2088750.75
③	500+85.00	LT. 12.00'	1298553.50	2088807.63
④	500+85.00	RT. 12.00'	1298529.50	2088807.77
⑤	500+04.53	RT. 43.74'	1298485.11	2088806.22
⑥	502+00.00	LT. 5.00'	1298538.09	2088922.77
⑦	502+00.00	RT. 5.00'	1298528.13	2088921.90



STA 501+08.68 (0° SKEW)
 PR PIPE CULVERT. 15" Ø x 40'
 T-1, CS/A
 (N 1298558.79, E 2088832.41) 18' LT USFL = 553.70
 (N 1298518.86, E 2088830.04) 22' RT DSFL = 553.30
 2-METAL END SEC 15" Ø
 (STD 542401)
 EX 12" x 30' CMP TBR

STA 500+22.00 (0° SKEW)
 PR PIPE CULVERT. 18" Ø x 98'
 T-1, CS/A
 (N 1298504.89, E 2088717.38) 46' LT USFL = 552.14
 (N 1298502.04, E 2088811.36) 48' RT DSFL = 553.12
 2-METAL END SEC 18" Ø
 (STD 542301)
 EX 18" x 60' CMP TBR

IL 101 STA 500+04.60
 LIMITS OF IMPROVEMENT

STA 500+00.00
 (HUNTER ACCESS RD) =
 STA 119+84.61 (IL 101)

REVISIONS	
NAME	DATE

ILLINOIS DEPARTMENT OF TRANSPORTATION

PLAN VIEW

WEINBERG KING STATE PARK

SCALE: VERT. _____
 HORIZ. _____

DATE _____ DRAWN BY BDK
 CHECKED BY ZSH

PLAN SHEET-HUNTER ACCESS ROAD

PLOT DATE = 8/24/2005
 PLOT SCALE = 1" = 40'
 USER NAME = hertobd