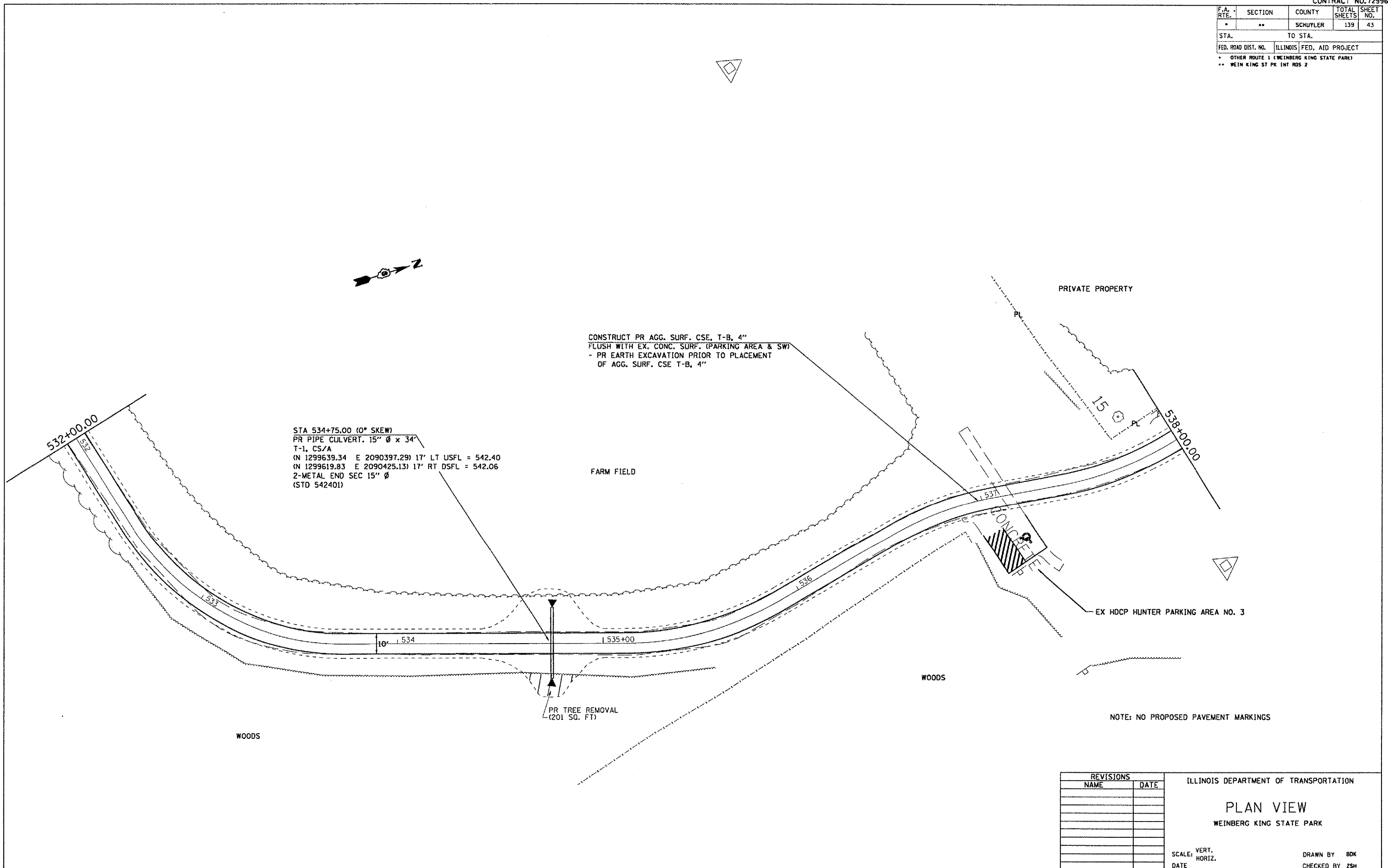


F.A. RTE.	SECTION	COUNTY	TOTAL SHEETS	SHEET NO.
*	**	SCHUYLER	139	43
STA.		TO STA.		
FED. ROAD DIST. NO.		ILLINOIS	FED. AID PROJECT	
* OTHER ROUTE 1 (WEINBERG KING STATE PARK)				
** WEIN KING ST PK INT RDS 2				



STA 534+75.00 (0° SKEW)
 PR PIPE CULVERT, 15" Ø x 34"
 T-1, CS/A
 (N 1299639.34 E 2090397.29) 17' LT USFL = 542.40
 (N 1299619.83 E 2090425.13) 17' RT DSFL = 542.06
 2-METAL END SEC 15" Ø
 (STD 542401)

CONSTRUCT PR AGG. SURF. CSE, T-B, 4"
 FLUSH WITH EX. CONC. SURF. (PARKING AREA & SW)
 - PR EARTH EXCAVATION PRIOR TO PLACEMENT
 OF AGG. SURF. CSE T-B, 4"

FARM FIELD

PRIVATE PROPERTY

EX HDCP HUNTER PARKING AREA NO. 3

WOODS

WOODS

PR TREE REMOVAL
 (201 SQ. FT)

NOTE: NO PROPOSED PAVEMENT MARKINGS

REVISIONS	
NAME	DATE

ILLINOIS DEPARTMENT OF TRANSPORTATION
PLAN VIEW
 WEINBERG KING STATE PARK

SCALE: VERT. _____
 HORIZ. _____
 DATE _____
 DRAWN BY BDK
 CHECKED BY ZSH

PLOT DATE = 8/24/2005
 PLOT SCALE = 43.375' / IN.
 USER NAME = kmbtd