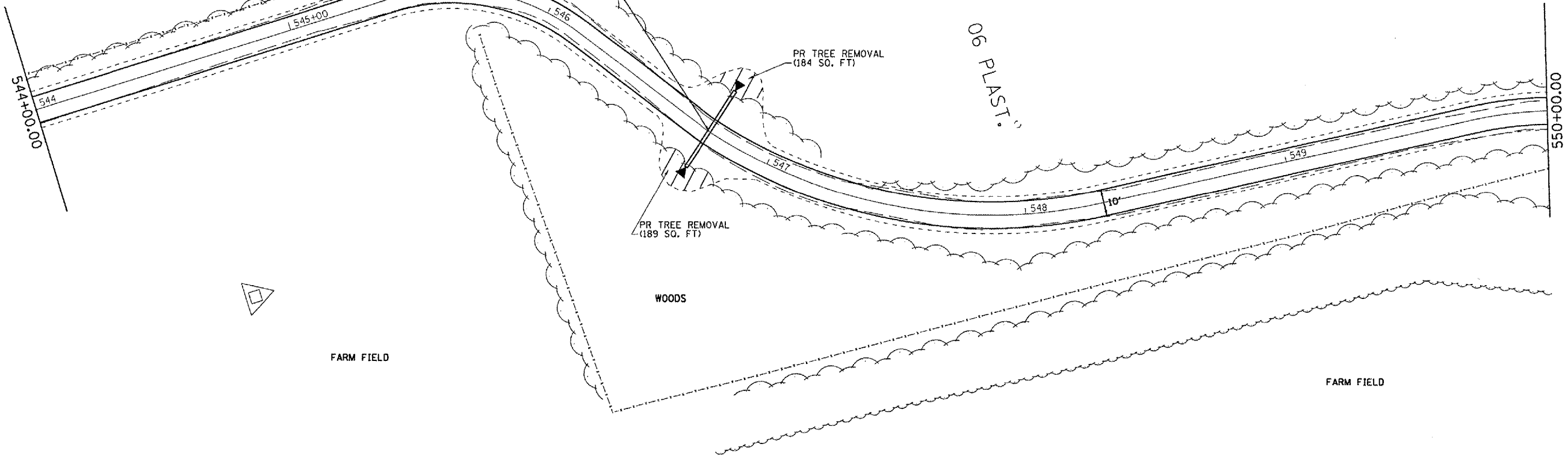


F.A. RTE.	SECTION	COUNTY	TOTAL SHEETS	SHEET NO.
*	**	SCHUYLER	139	45
STA.		TO STA.		
FED. ROAD DIST. NO.		ILLINOIS	FED. AID PROJECT	
* OTHER ROUTE 1 (WEINBERG KING STATE PARK)				
** WEIN KING ST PK INT RDS 2				

STA 546+75.00 (10° SKEW)  
 PR PIPE CULVERT, 15" Ø x 34'  
 T-1, CS/A  
 (N 1300787.70 E 2090581.85) 18' LT DSFL = 531.36  
 (N 1300761.38 E 2090603.37) 16' RT USFL = 531.70  
 2-METAL END SEC 15" Ø  
 (STD 542401)



WOODS



FARM FIELD

WOODS

FARM FIELD

REVISIONS	
NAME	DATE

ILLINOIS DEPARTMENT OF TRANSPORTATION

PLAN VIEW  
 WEINBERG KING STATE PARK

SCALE: VERT.  
 HORIZ.  
 DATE

DRAWN BY: BDK  
 CHECKED BY: ZSH

**PLAN SHEET-HUNTER ACCESS ROAD**

PLOT DATE = 8/24/2005  
 PLOT SCALE = 43.75' / IN.  
 USER NAME = kmbd