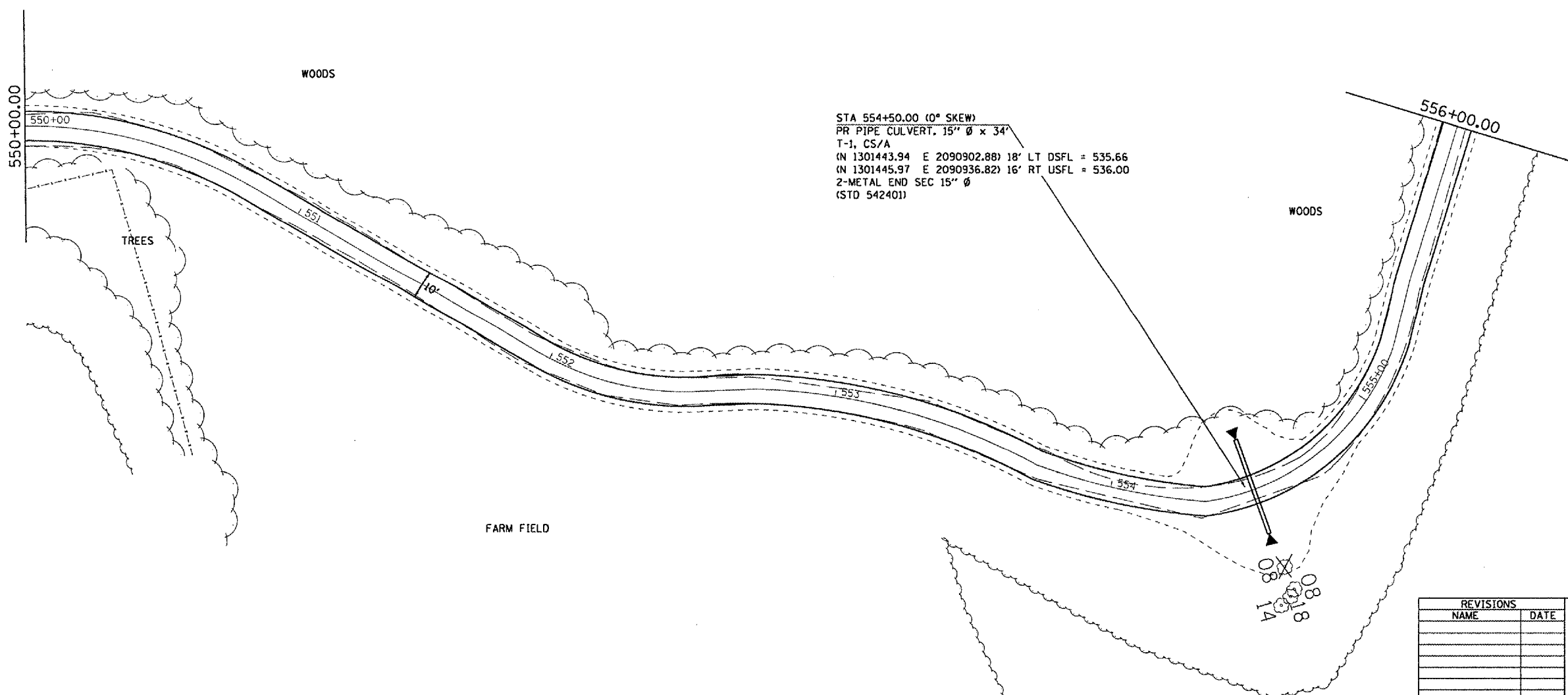


F.A. RTE.	SECTION	COUNTY	TOTAL SHEETS	SHEET NO.
*	**	SCHUYLER	139	46
STA.		TO STA.		
FED. ROAD DIST. NO.		ILLINOIS FED. AID PROJECT		
* OTHER ROUTE 1 (WEINBERG KING STATE PARK)				
** WEIN KING ST PK INT ROS 2				



STA 554+50.00 (0° SKEW)
 PR PIPE CULVERT, 15" Ø x 34'
 T-1, CS/A
 (N 1301443.94 E 2090902.88) 18' LT DSFL = 535.66
 (N 1301445.97 E 2090936.82) 16' RT USFL = 536.00
 Z-METAL END SEC 15" Ø
 (STD 542401)

REVISIONS	
NAME	DATE

ILLINOIS DEPARTMENT OF TRANSPORTATION
PLAN VIEW
 WEINBERG KING STATE PARK
 SCALE: VERT. _____
 HORIZ. _____
 DATE _____
 DRAWN BY BDK
 CHECKED BY ZSH

PLOT DATE = 8/24/2005
 FILE NAME = c:\projects\72996\contract 2.d\vt_hunteraccess.dgn
 USER NAME = kmrb