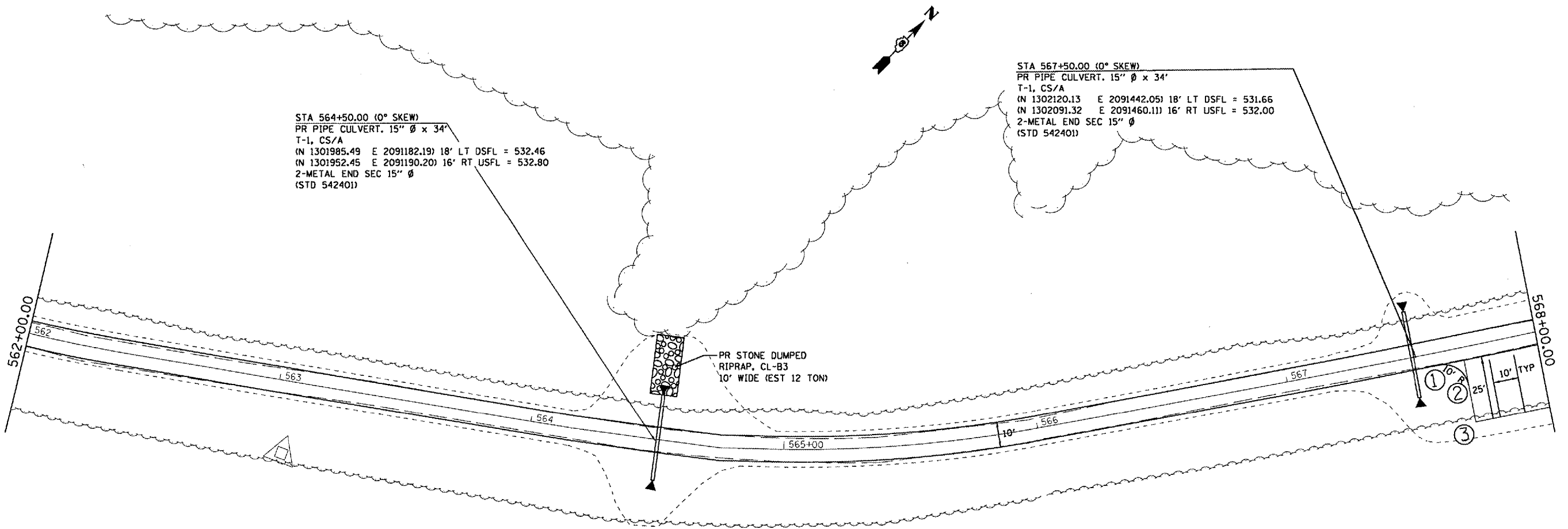


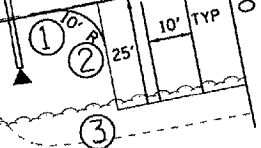
F.A. RTE.	SECTION	COUNTY	TOTAL SHEETS	SHEET NO.
*	**	SCHUYLER	139	48
STA.		TO STA.		
FED. ROAD DIST. NO.		ILLINOIS	FED. AID PROJECT	
* OTHER ROUTE 1 (WEINBERG KING STATE PARK)				
** WEIN KING ST PR INT RDS 2				



STA 564+50.00 (0° SKEW)
 PR PIPE CULVERT, 15" Ø x 34'
 T-1, CS/A
 (N 1301985.49 E 2091182.19) 18' LT DSFL = 532.46
 (N 1301952.45 E 2091190.20) 16' RT USFL = 532.80
 2-METAL END SEC 15" Ø
 (STD 542401)

STA 567+50.00 (0° SKEW)
 PR PIPE CULVERT, 15" Ø x 34'
 T-1, CS/A
 (N 1302120.13 E 2091442.05) 18' LT DSFL = 531.66
 (N 1302091.32 E 2091460.11) 16' RT USFL = 532.00
 2-METAL END SEC 15" Ø
 (STD 542401)

PR STONE DUMPED
 RIPRAP, CL-B3
 10' WIDE (EST 12 TON)



PLOT DATE = 8/24/2005
 PLOT SCALE = 41.37127 / IN.
 USER NAME = kentbd

REVISIONS	
NAME	DATE

ILLINOIS DEPARTMENT OF TRANSPORTATION
PLAN VIEW
 WEINBERG KING STATE PARK
 SCALE: VERT. DRAWN BY BOK
 HORIZ. CHECKED BY ZSH
 DATE