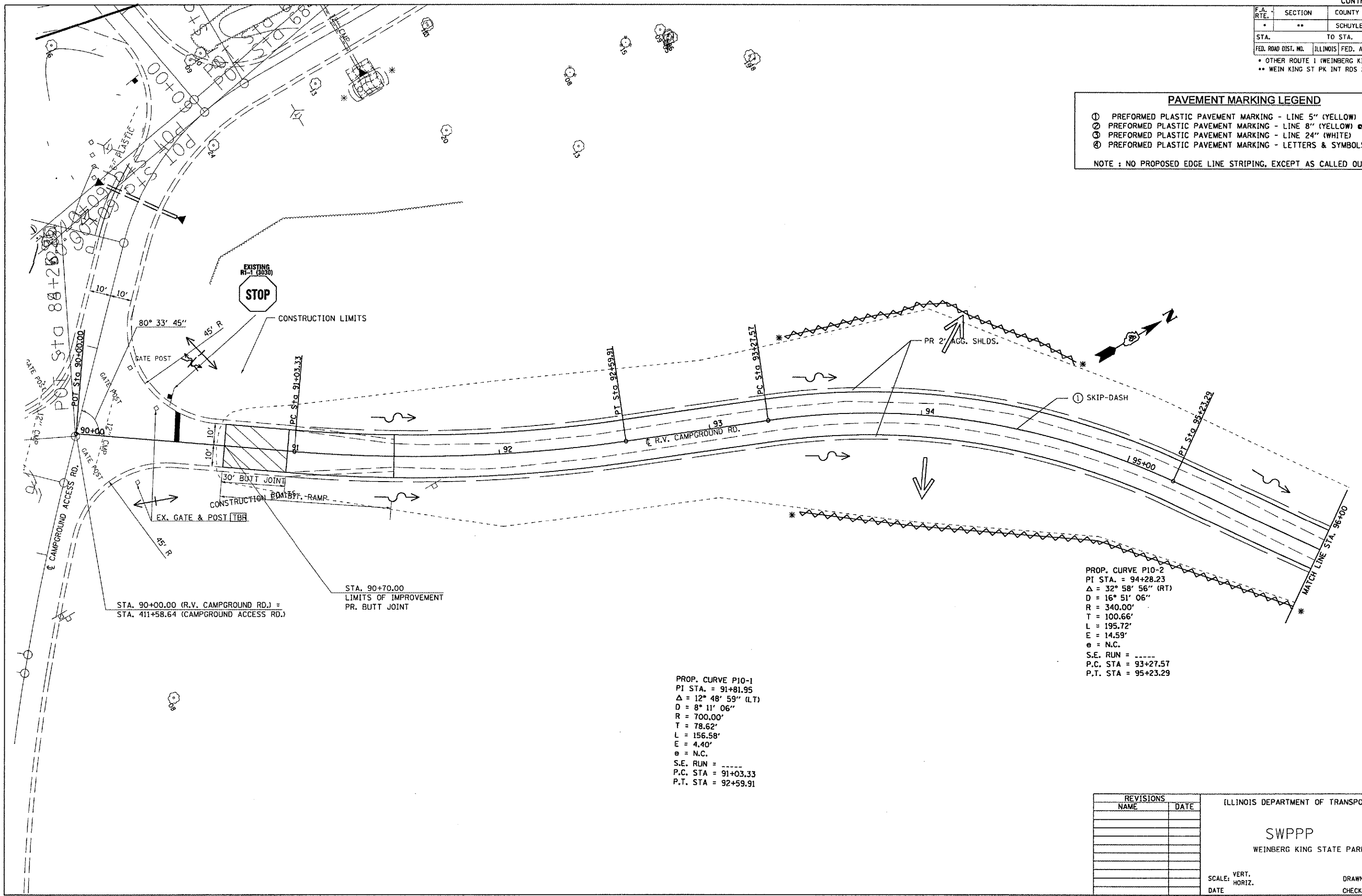


F.A. RTE.	SECTION	COUNTY	TOTAL SHEETS	SHEET NO.
*	**	SCHUYLER	139	55
STA.		TO STA.		
FED. ROAD DIST. NO.		ILLINOIS	FED. AID PROJECT	
* OTHER ROUTE 1 (WEINBERG KING STATE PARK)				
** WEIN KING ST PK INT RDS 2				

**PAVEMENT MARKING LEGEND**

- ① PREFORMED PLASTIC PAVEMENT MARKING - LINE 5" (YELLOW)
- ② PREFORMED PLASTIC PAVEMENT MARKING - LINE 8" (YELLOW) @ 5' CTS.
- ③ PREFORMED PLASTIC PAVEMENT MARKING - LINE 24" (WHITE)
- ④ PREFORMED PLASTIC PAVEMENT MARKING - LETTERS & SYMBOLS (WHITE)

NOTE : NO PROPOSED EDGE LINE STRIPING, EXCEPT AS CALLED OUT.



PROP. CURVE P10-2  
 PI STA. = 94+28.23  
 $\Delta = 32^\circ 58' 56''$  (RT)  
 $D = 16^\circ 51' 06''$   
 $R = 340.00'$   
 $T = 100.66'$   
 $L = 195.72'$   
 $E = 14.59'$   
 $e = N.C.$   
 S.E. RUN = -----  
 P.C. STA = 93+27.57  
 P.T. STA = 95+23.29

PROP. CURVE P10-1  
 PI STA. = 91+81.95  
 $\Delta = 12^\circ 48' 59''$  (LT)  
 $D = 8^\circ 11' 06''$   
 $R = 700.00'$   
 $T = 78.62'$   
 $L = 156.58'$   
 $E = 4.40'$   
 $e = N.C.$   
 S.E. RUN = -----  
 P.C. STA = 91+03.33  
 P.T. STA = 92+59.91

STA. 90+00.00 (R.V. CAMPGROUND RD.) =  
 STA. 411+58.64 (CAMPGROUND ACCESS RD.)

STA. 90+70.00  
 LIMITS OF IMPROVEMENT  
 PR. BUTT JOINT

REVISIONS	
NAME	DATE

ILLINOIS DEPARTMENT OF TRANSPORTATION

**SWPPP**

WEINBERG KING STATE PARK

SCALE: VERT. \_\_\_\_\_  
 HORIZ. \_\_\_\_\_  
 DATE \_\_\_\_\_

DRAWN BY BDK  
 CHECKED BY JCN

PLOT DATE = 8/24/2005  
 PLOT SCALE = 1" = 40.00'  
 USER NAME = kerrybd