

F.A. RTE.	SECTION	COUNTY	TOTAL SHEETS	SHEET NO.
*	**	SCHUYLER	139	59

STA. TO STA.

FED. ROAD DIST. NO. ILLINOIS FED. AID PROJECT

* OTHER ROUTE 1 (WEINBERG KING STATE PARK)
 ** WEIN KING ST PK INT RDS 2

PAVEMENT MARKING LEGEND

- ① PREFORMED PLASTIC PAVEMENT MARKING - LINE 5" (YELLOW)
- ② PREFORMED PLASTIC PAVEMENT MARKING - LINE 8" (YELLOW) @ 5' CTS.
- ③ PREFORMED PLASTIC PAVEMENT MARKING - LINE 24" (WHITE)
- ④ PREFORMED PLASTIC PAVEMENT MARKING - LETTERS & SYMBOLS (WHITE)

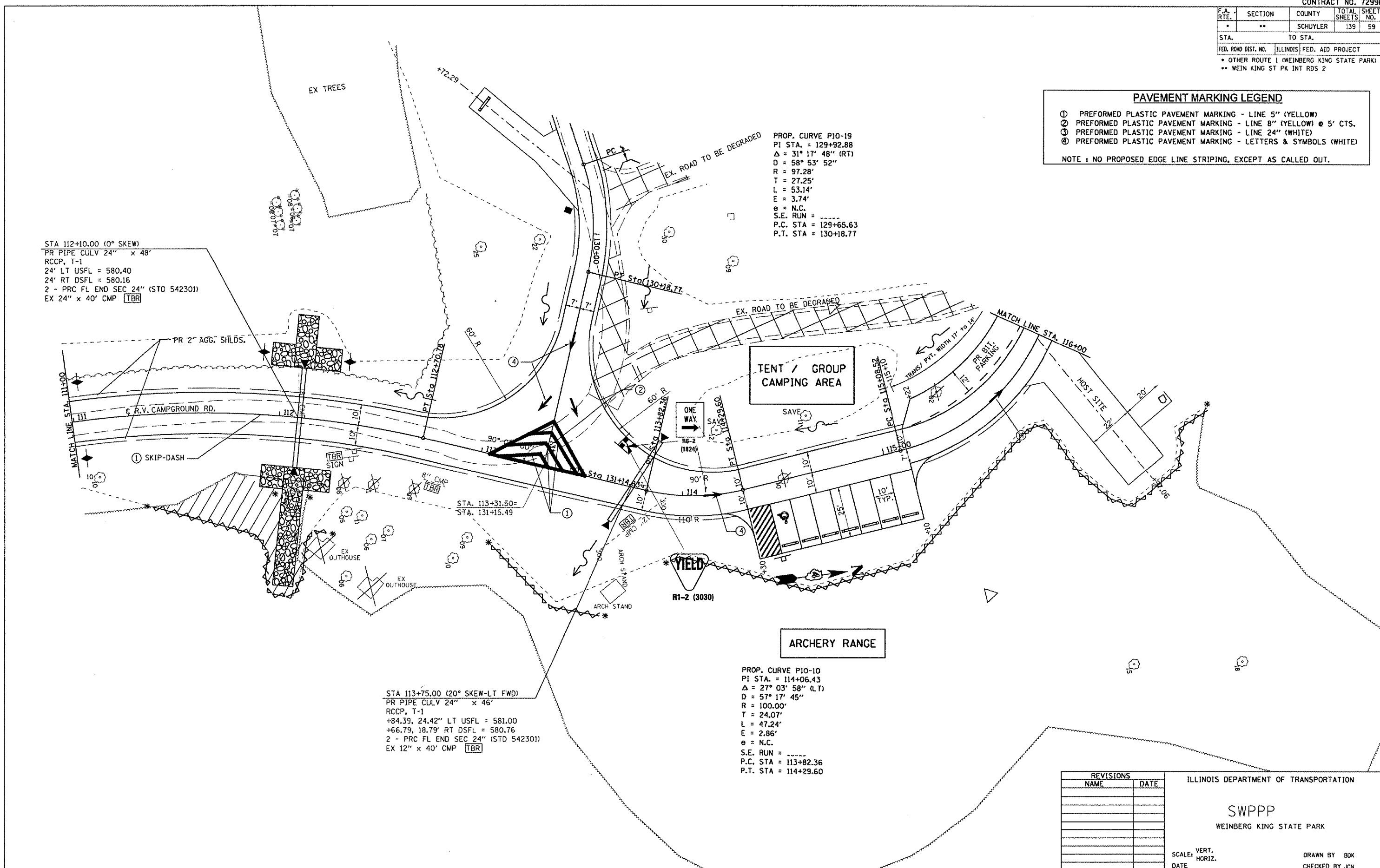
NOTE : NO PROPOSED EDGE LINE STRIPING, EXCEPT AS CALLED OUT.

PROP. CURVE P10-19
 PI STA. = 129+92.88
 $\Delta = 31^\circ 17' 48''$ (RT)
 D = 58° 53' 52"
 R = 97.28'
 T = 27.25'
 L = 53.14'
 E = 3.74'
 $\theta =$ N.C.
 S.E. RUN = -----
 P.C. STA = 129+65.63
 P.T. STA = 130+18.77

STA 112+10.00 (0° SKEW)
 PR PIPE CULV 24" x 48"
 RCCP, T-1
 24' LT USFL = 580.40
 24' RT DSFL = 580.16
 2 - PRC FL END SEC 24" (STD 542301)
 EX 24" x 40' CMP TBR

STA 113+75.00 (20° SKEW-LT FWD)
 PR PIPE CULV 24" x 46"
 RCCP, T-1
 +84.39, 24.42' LT USFL = 581.00
 +66.79, 18.79' RT DSFL = 580.76
 2 - PRC FL END SEC 24" (STD 542301)
 EX 12" x 40' CMP TBR

PROP. CURVE P10-10
 PI STA. = 114+06.43
 $\Delta = 27^\circ 03' 58''$ (LT)
 D = 57° 17' 45"
 R = 100.00'
 T = 24.07'
 L = 47.24'
 E = 2.86'
 $\theta =$ N.C.
 S.E. RUN = -----
 P.C. STA = 113+82.36
 P.T. STA = 114+29.60



PLOT DATE = 8/24/2005
 PLOT SCALE = 1" = 40'
 USER NAME = kensid

REVISIONS		ILLINOIS DEPARTMENT OF TRANSPORTATION
NAME	DATE	
		SWPPP WEINBERG KING STATE PARK SCALE: VERT. _____ HORIZ. _____ DATE _____ DRAWN BY BDK CHECKED BY JCN