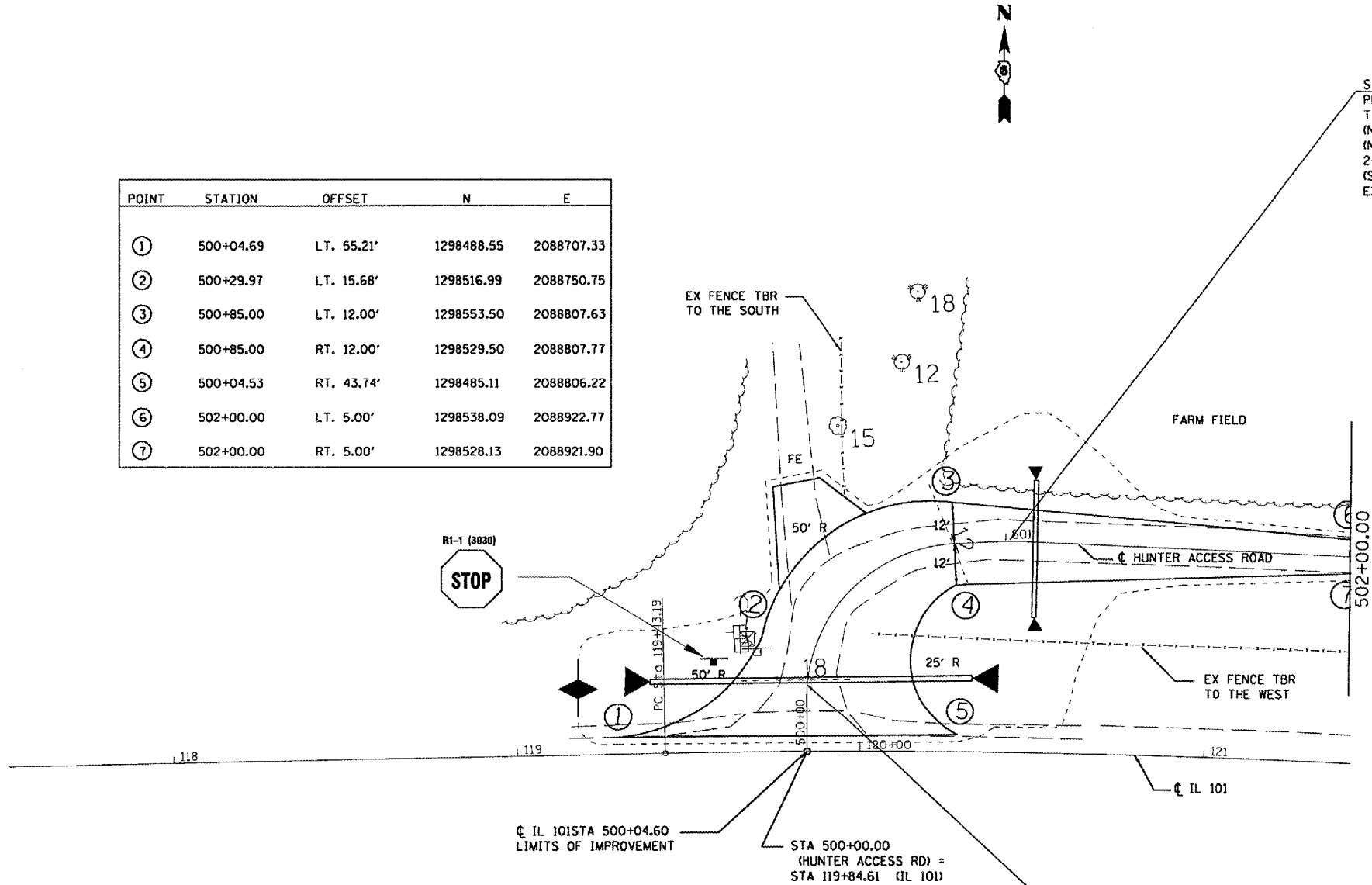


F.A. RTE.	SECTION	COUNTY	TOTAL SHEETS	SHEET NO.
*	**	SCHUYLER	139	64
STA.		TO STA.		
FED. ROAD DIST. NO.		ILLINOIS	FED. AID PROJECT	
* OTHER ROUTE 1 (WEINBERG KING STATE PARK)				
** WEIN KING ST PK INT ROS 2				

POINT	STATION	OFFSET	N	E
①	500+04.69	LT. 55.21'	1298488.55	2088707.33
②	500+29.97	LT. 15.68'	1298516.99	2088750.75
③	500+85.00	LT. 12.00'	1298553.50	2088807.63
④	500+85.00	RT. 12.00'	1298529.50	2088807.77
⑤	500+04.53	RT. 43.74'	1298485.11	2088806.22
⑥	502+00.00	LT. 5.00'	1298538.09	2088922.77
⑦	502+00.00	RT. 5.00'	1298528.13	2088921.90



STA 501+08.68 (10° SKEW)  
 PR PIPE CULVERT, 15" Ø x 40'  
 T-1, CS/A  
 (N 1298558.79, E 2088832.41) 18' LT USFL = 553.70  
 (N 1298518.86, E 2088830.04) 22' RT DSFL = 553.30  
 2-METAL END SEC 15" Ø  
 (STD 542401)  
 EX 12" x 30' CMP TBR



CL IL 101 STA 500+04.60  
 LIMITS OF IMPROVEMENT

STA 500+00.00  
 (HUNTER ACCESS RD) =  
 STA 119+84.61 (IL 101)

STA 500+22.00 (10° SKEW)  
 PR PIPE CULVERT, 18" Ø x 98'  
 T-1, CS/A  
 (N 1298511.65, E 2088718.13) 46' LT USFL = 552.14  
 (N 1298496.00, E 2088810.82) 48' RT DSFL = 553.12  
 2- METAL END SEC 18" Ø  
 (STD 542301)  
 EX 18" x 60' CMP TBR

REVISIONS	
NAME	DATE

ILLINOIS DEPARTMENT OF TRANSPORTATION  
**SWPPP**  
 WEINBERG KING STATE PARK  
 SCALE: VERT. \_\_\_\_\_  
 HORIZ. \_\_\_\_\_  
 DATE \_\_\_\_\_  
 DRAWN BY BDK  
 CHECKED BY JCN

PLOT DATE = 8/24/2005  
 PLOT SCALE = 43.3735' / IN.  
 USER NAME = hantebd