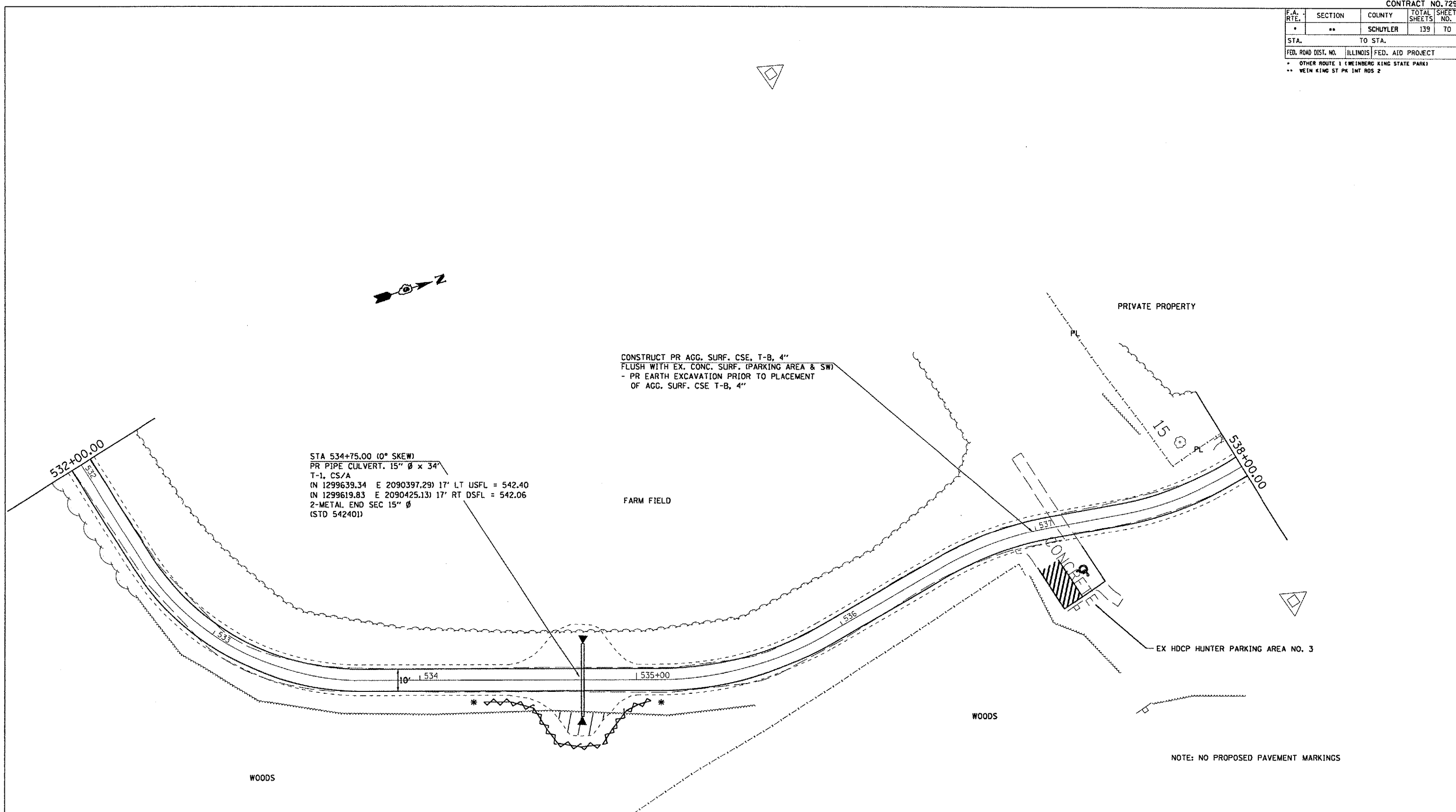


F.A. RTE.	SECTION	COUNTY	TOTAL SHEETS	SHEET NO.
*	**	SCHUYLER	139	70
STA.		TO STA.		
FED. ROAD DIST. NO.		ILLINOIS FED. AID PROJECT		
* OTHER ROUTE 1 (WEINBERG KING STATE PARK)				
** WEIN KING ST PK INT ROS 2				



STA 534+75.00 (0° SKEW)  
 PR PIPE CULVERT. 15" Ø x 34"  
 T-1, CS/A  
 (N 1299639.34 E 2090397.29) 17' LT USFL = 542.40  
 (N 1299619.83 E 2090425.13) 17' RT DSFL = 542.06  
 2-METAL END SEC 15" Ø  
 (STD 542401)

CONSTRUCT PR AGG. SURF. CSE, T-B, 4"  
 FLUSH WITH EX. CONC. SURF. (PARKING AREA & SW)  
 - PR EARTH EXCAVATION PRIOR TO PLACEMENT  
 OF AGG. SURF. CSE T-B, 4"

PRIVATE PROPERTY

FARM FIELD

CONCRETE

EX HDCP HUNTER PARKING AREA NO. 3

WOODS

WOODS

NOTE: NO PROPOSED PAVEMENT MARKINGS

PLOT DATE = 8/24/2005  
 FILE NAME = d:\projects\swppp\contract 2 v0\hnt.hunter.access.psdgn  
 PLOT SCALE = 1" = 40'  
 USER NAME = hntsd

REVISIONS	
NAME	DATE

ILLINOIS DEPARTMENT OF TRANSPORTATION

**SWPPP**

WEINBERG KING STATE PARK

SCALE: VERT. \_\_\_\_\_  
 HORIZ. \_\_\_\_\_

DATE \_\_\_\_\_ DRAWN BY BDK  
 CHECKED BY JCN

**SWPPP-HUNTER ACCESS ROAD**