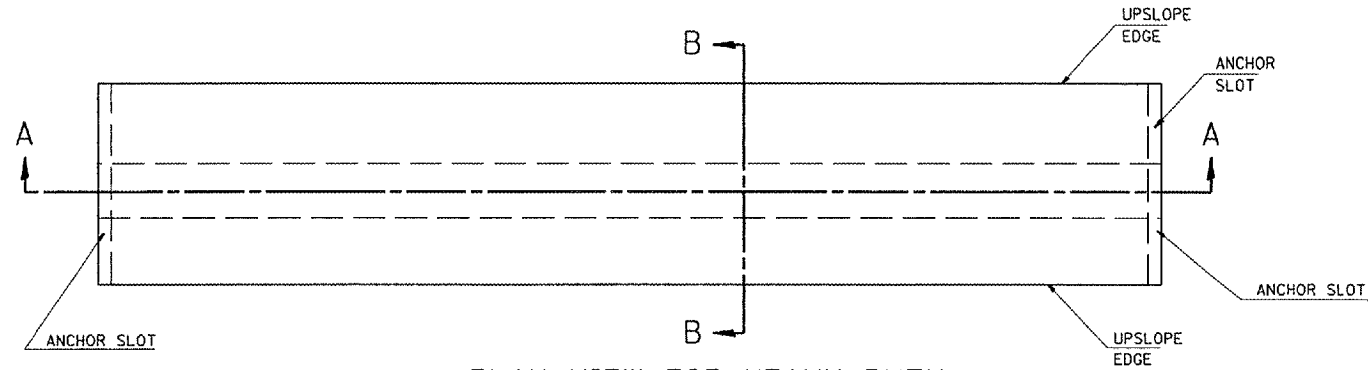
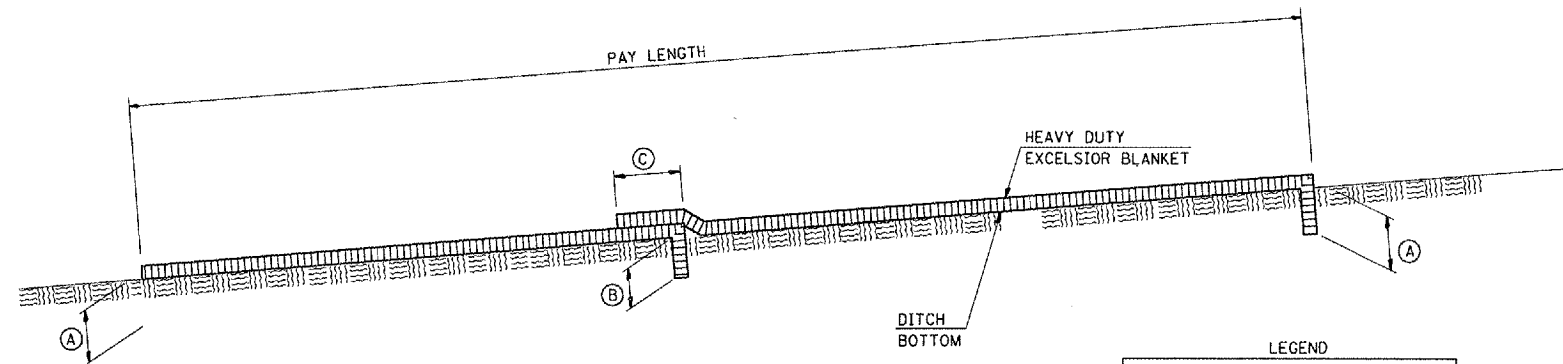


F.A. RTE.	SECTION	COUNTY	TOTAL SHEETS	SHEET NO.
*	**	SCHUYLER	139	79
STA.		TO STA.		
FED. ROAD DIST. NO.		ILLINOIS FED. AID PROJECT		
* OTHER ROUTE 1 (WEINBERG KING STATE PARK)				
** WEIN KING ST. PK. INT RDS 2				



PLAN VIEW FOR HEAVY DUTY EXCELSIOR BLANKET PLACEMENT IN DITCH

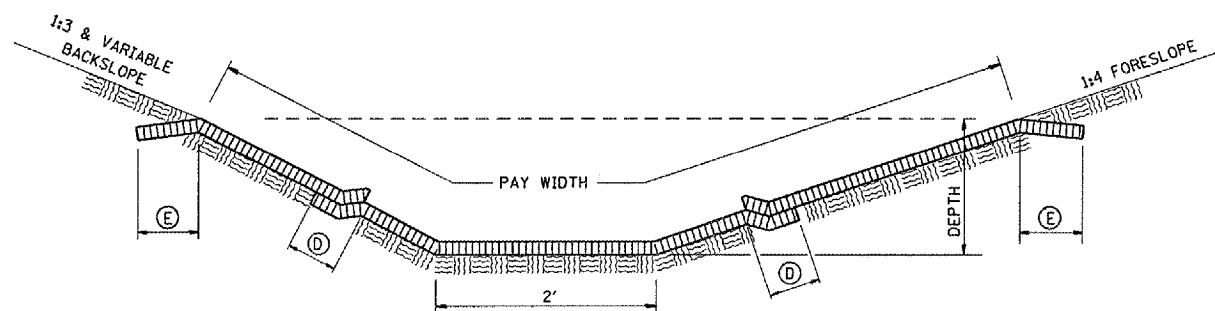
NOTE:
FOR ADDITIONAL INFORMATION SEE SECTION 280 OF THE STANDARD SPECIFICATIONS



HEAVY DUTY EXCELSIOR BLANKET SECTION A - A

LEGEND

(A)	12" ANCHOR SLOT
(B)	8" JUNCTION SLOT
(C)	12" LAP (IF REQUIRED)
(D)	12" LAP (IF REQUIRED) (STAPLE OR STAKE @ 36" CTS.)
(E)	12" UPSLOPE EDGE



HEAVY DUTY EXCELSIOR BLANKET SECTION B - B

NOTE:
ADDITIONAL MATERIAL REQUIRED FOR ANCHOR SLOTS,
CHECK SLOTS, UPSLOPE EDGES AND LAPS WILL NOT BE
MEASURED FOR PAYMENT

REVISIONS		ILLINOIS DEPARTMENT OF TRANSPORTATION HEAVY DUTY EXCELSIOR BLANKET DITCH LINING DETAILS
NAME	DATE	

SCALE: VERT. HORIZ.
DATE: DRAWN BY: CHECKED BY:

DGN-SPEC
DATE-TIME
*REF01