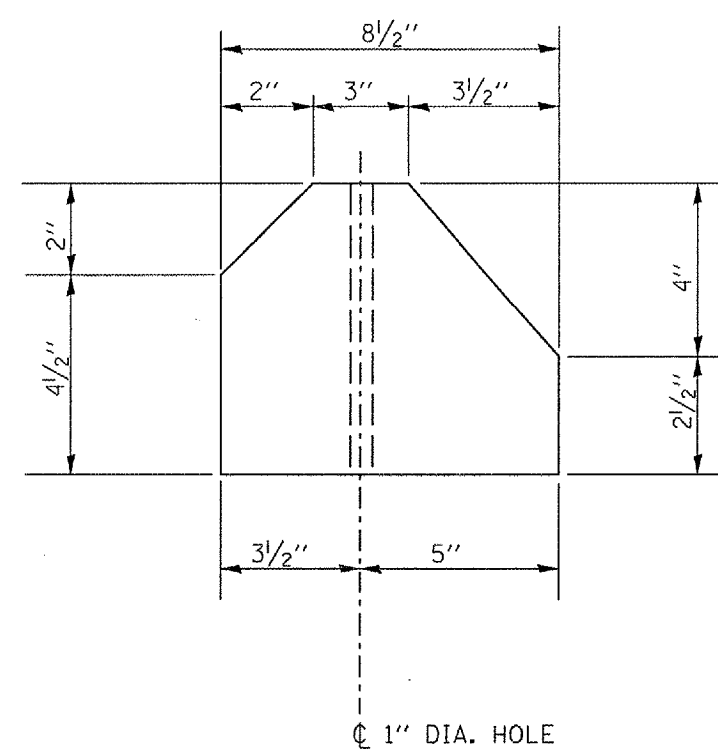
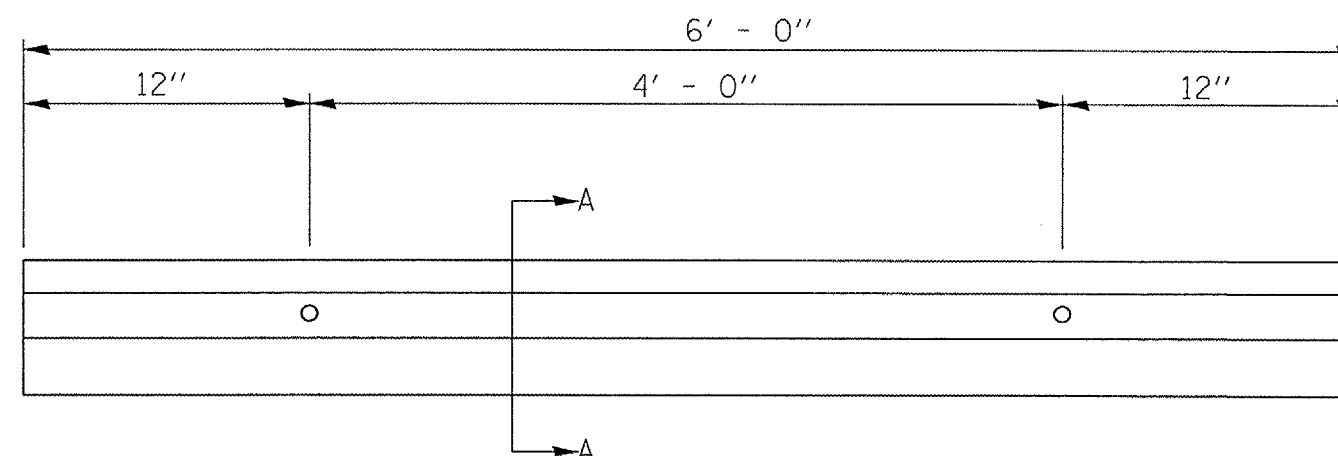


F.A. RTE.	SECTION	COUNTY	TOTAL SHEETS	SHEET NO.
*	**	SCHUYLER	139	84
STA.		TO STA.		
FED. ROAD DIST. NO.		ILLINOIS FED. AID PROJECT		
* OTHER ROUTE (WEINBERG KING STATE PARK)				
** WEINBERG KING ST PK INT RDS 2				



EX & PR BUMPER BLOCKS TO BE FASTENED TO PR BIT. SURF. W/ 3/4" O/ x 24" STEEL SPIKES W/ CAPS APPROVED BY THE ENGINEER

PRECAST CONCRETE CAR BUMPER DETAIL

SECTION A-A

ILLINOIS DEPARTMENT OF TRANSPORTATION

PRECAST CONCRETE CAR BUMPER DETAIL
WEINBERG KING STATE PARK

SCALE: DATE: DRAWN BY: BDK CHECKED BY:

DGN-SPEC
DATE-TIME
*REF 01