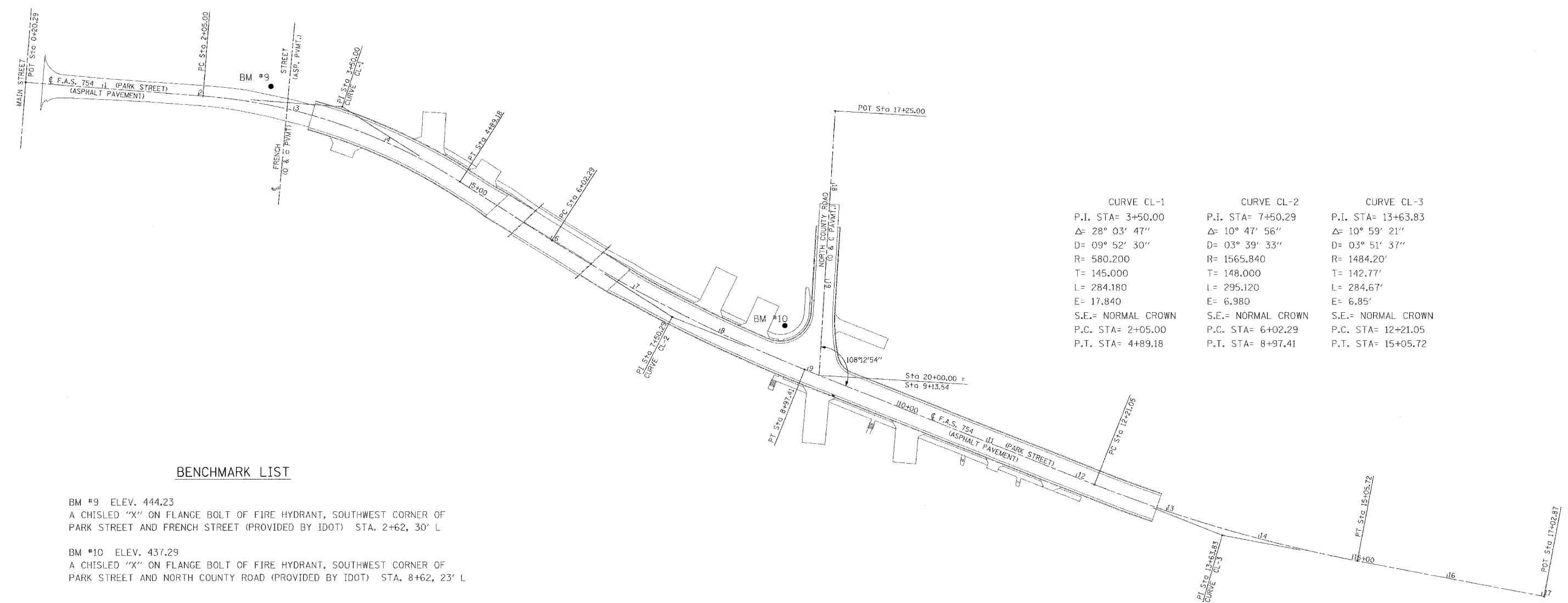


FAS ROUTE	SECTION	COUNTY	TOTAL SHEETS	SHEET NO.
754	4RS-2, 4BR	CALHOUN	87	13

STA. TO STA.
EXISTING CONDITIONS:

CONTRACT NO. 76269

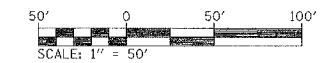
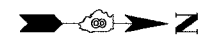
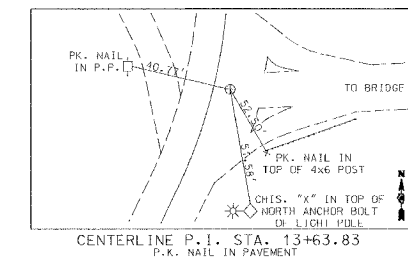
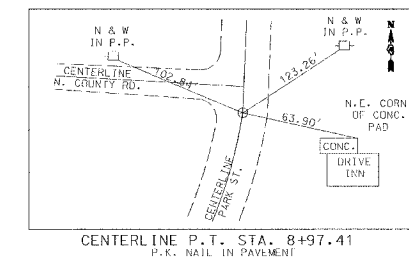
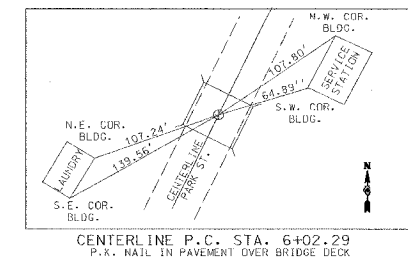
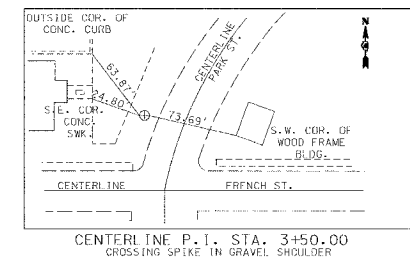
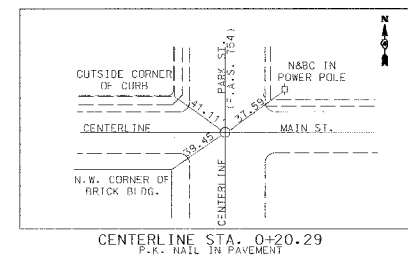
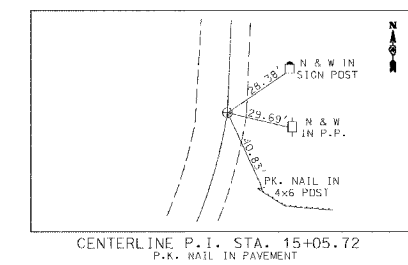
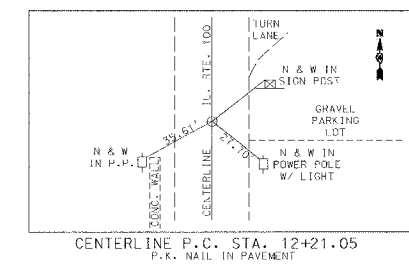
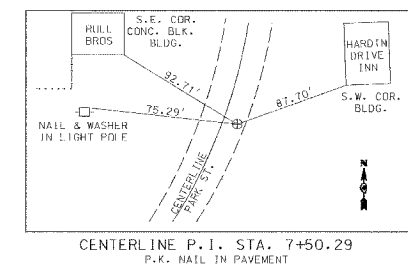
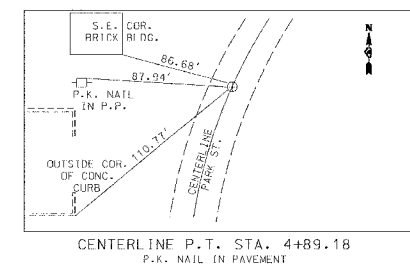
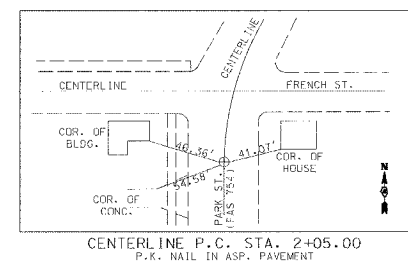


CURVE CL-1	CURVE CL-2	CURVE CL-3
P.I. STA= 3+50.00	P.I. STA= 7+50.29	P.I. STA= 13+63.83
Δ= 28° 03' 47"	Δ= 10° 47' 56"	Δ= 10° 59' 21"
D= 09° 52' 30"	D= 03° 39' 33"	D= 03° 51' 37"
R= 580.200	R= 1565.840	R= 1484.20'
T= 145.000	T= 148.000	T= 142.77'
L= 284.180	L= 295.120	L= 284.67'
E= 17.840	E= 6.980	E= 6.85'
S.E.= NORMAL CROWN	S.E.= NORMAL CROWN	S.E.= NORMAL CROWN
P.C. STA= 2+05.00	P.C. STA= 6+02.29	P.C. STA= 12+21.05
P.T. STA= 4+89.18	P.T. STA= 8+97.41	P.T. STA= 15+05.72

BENCHMARK LIST

BM #9 ELEV. 444.23
A CHISLED "X" ON FLANGE BOLT OF FIRE HYDRANT, SOUTHWEST CORNER OF PARK STREET AND FRENCH STREET (PROVIDED BY IDOT) STA. 2+62, 30' L

BM #10 ELEV. 437.29
A CHISLED "X" ON FLANGE BOLT OF FIRE HYDRANT, SOUTHWEST CORNER OF PARK STREET AND NORTH COUNTY ROAD (PROVIDED BY IDOT) STA. 8+62, 23' L



REVISIONS	
NAME	DATE

ILLINOIS DEPARTMENT OF TRANSPORTATION
ALIGNMENTS, TIES, & BENCHMARKS

FAS ROUTE 754
SECTION 4RS-2, 4BR
CALHOUN COUNTY

DATE BY: MAY, 2003
DRAWN BY: WJS
CHECKED BY: MKC