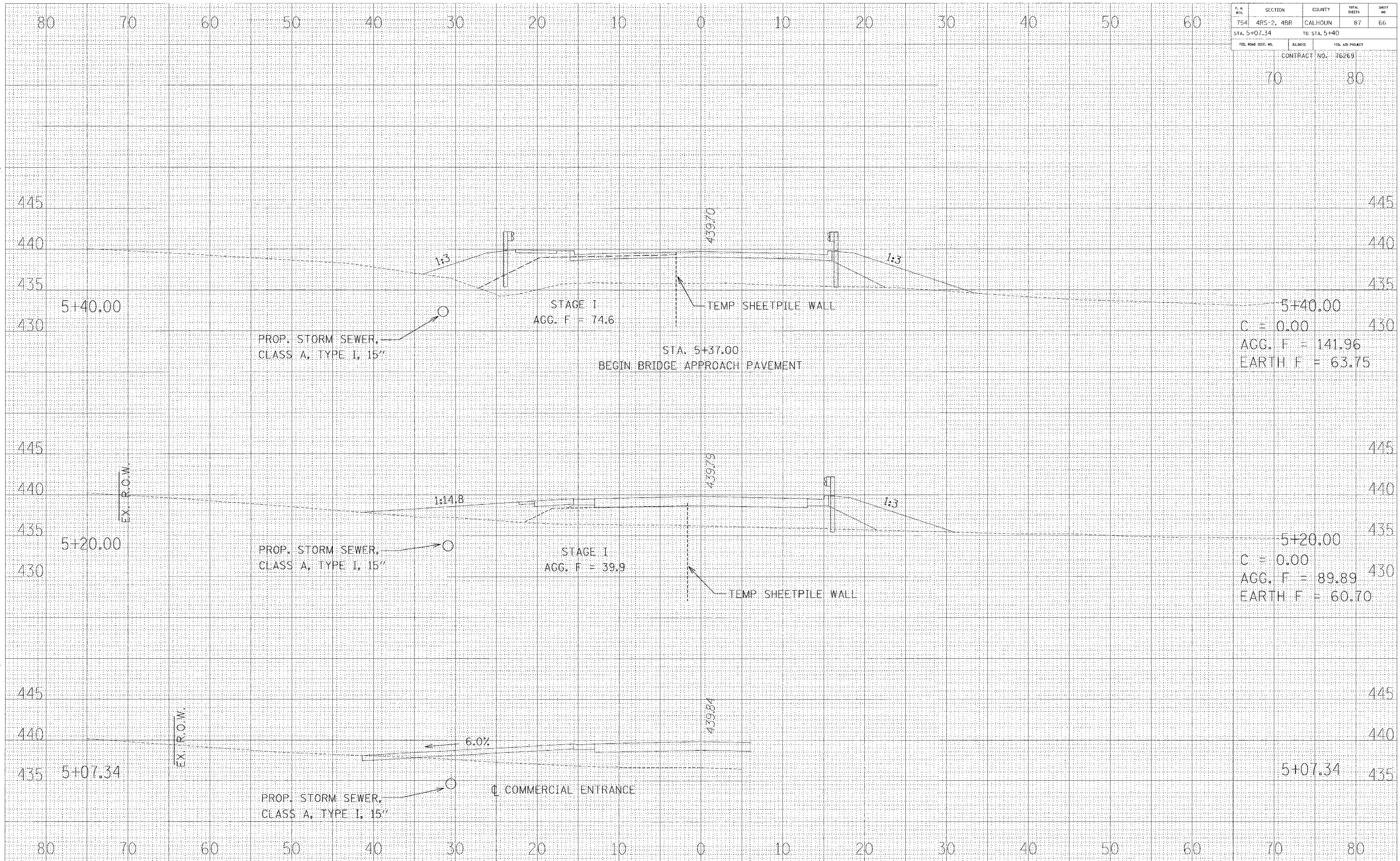


F. A. NO.	SECTION	COUNTY	TOTAL SHEETS	SHEET NO.
754	4RS-2, 4BR	CALHOUN	87	66
STA. 5+07.34		TO STA. 5+40		
FED. ROAD DIST. NO.		BLDG. NO.	FED. AID PROJECT	
		CONTRACT NO. 76269		



PROP. STORM SEWER,  
CLASS A, TYPE I, 15"

STAGE I  
ACC. F = 74.6

STA. 5+37.00  
BEGIN BRIDGE APPROACH PAVEMENT

TEMP SHEETPILE WALL

5+40.00  
C = 0.00  
AGG. F = 141.96  
EARTH F = 63.75

PROP. STORM SEWER,  
CLASS A, TYPE I, 15"

STAGE I  
ACC. F = 39.9

TEMP SHEETPILE WALL

5+20.00  
C = 0.00  
AGG. F = 89.89  
EARTH F = 60.70

PROP. STORM SEWER,  
CLASS A, TYPE I, 15"

COMMERCIAL ENTRANCE

5+07.34