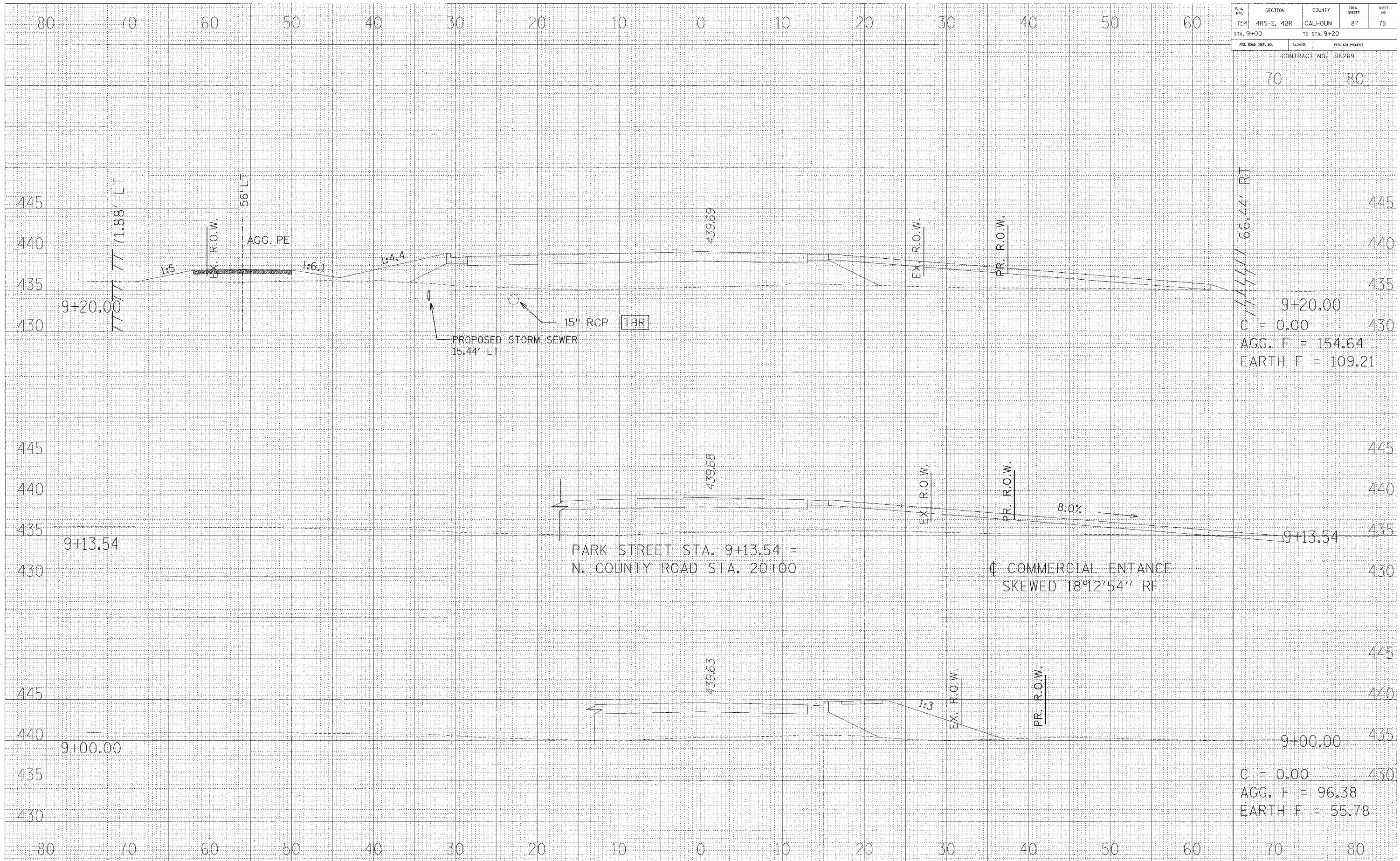


F. A. MILE	SECTION	COUNTY	TOTAL SHEETS	SHEET NO.
754	4RS-2, 4BR	CALHOUN	87	75
STA. 9+00		TO STA. 9+20		
FED. ROAD DIST. NO.		ALMOST	FED. AID PROJECT	
CONTRACT NO. 76269				



70 80

445
440
435
430
9+20.00
C = 0.00
AGG. F = 154.64
EARTH F = 109.21

445
440
435
430
9+13.54
PARK STREET STA. 9+13.54 =
N. COUNTY ROAD STA. 20+00
Q COMMERCIAL ENTRANCE
SKEWED 18°12'54" RF

445
440
435
430
9+00.00
C = 0.00
AGG. F = 96.38
EARTH F = 55.78

70 80