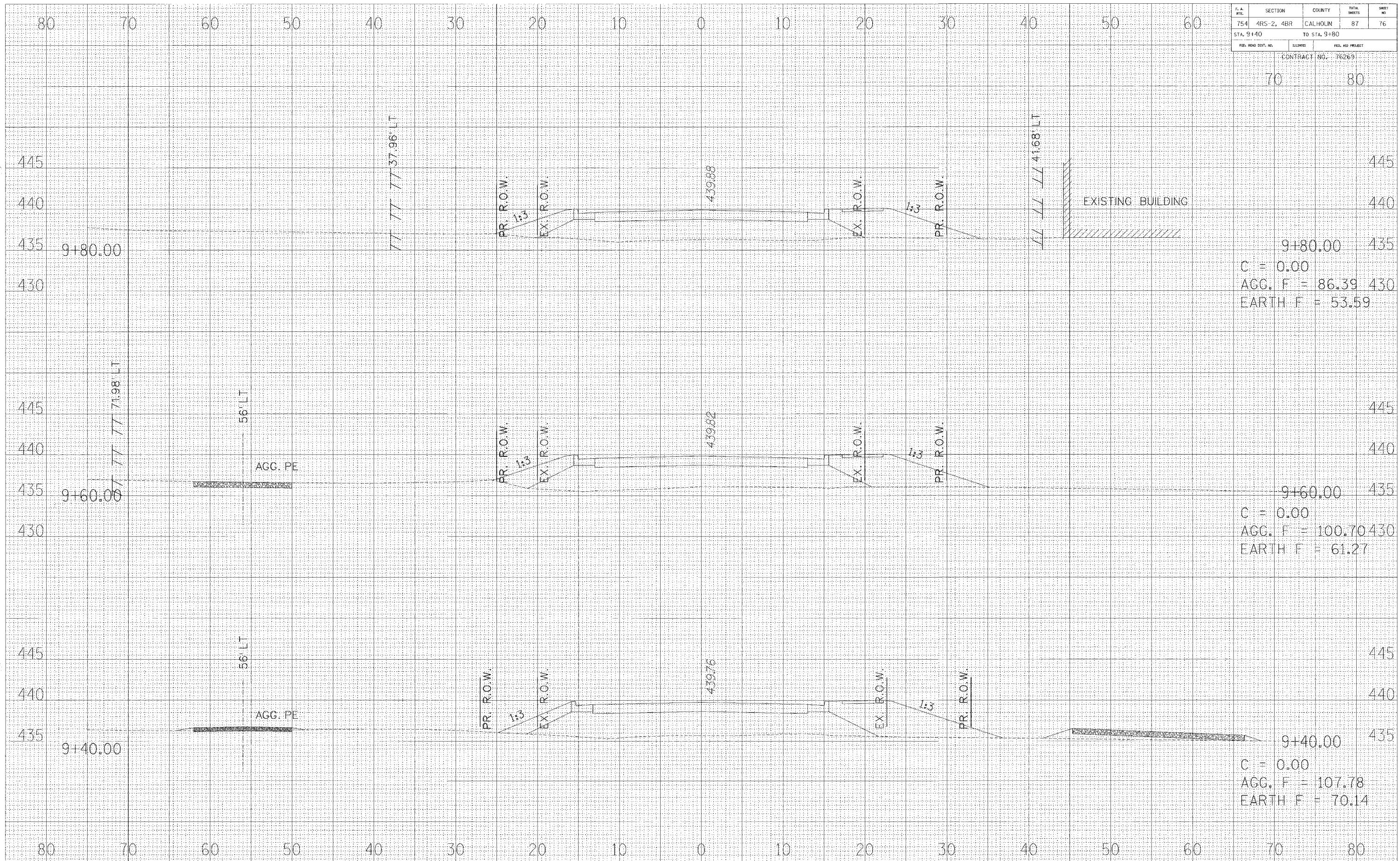


F. A. WTE.	SECTION	COUNTY	TOTAL SHEETS	SHEET NO.
754	4RS-2, 4BR	CALHOUN	87	76
STA. 9+40		TO STA. 9+80		
FED. ROAD DIST. NO.		ILLINOIS	FED. AID PROJECT	

CONTRACT NO. 76269



70 80

445 440 435 430

9+80.00

C = 0.00
AGG. F = 86.39
EARTH F = 53.59

445 440 435 430

9+60.00

C = 0.00
AGG. F = 100.70
EARTH F = 61.27

445 440 435

9+40.00

C = 0.00
AGG. F = 107.78
EARTH F = 70.14