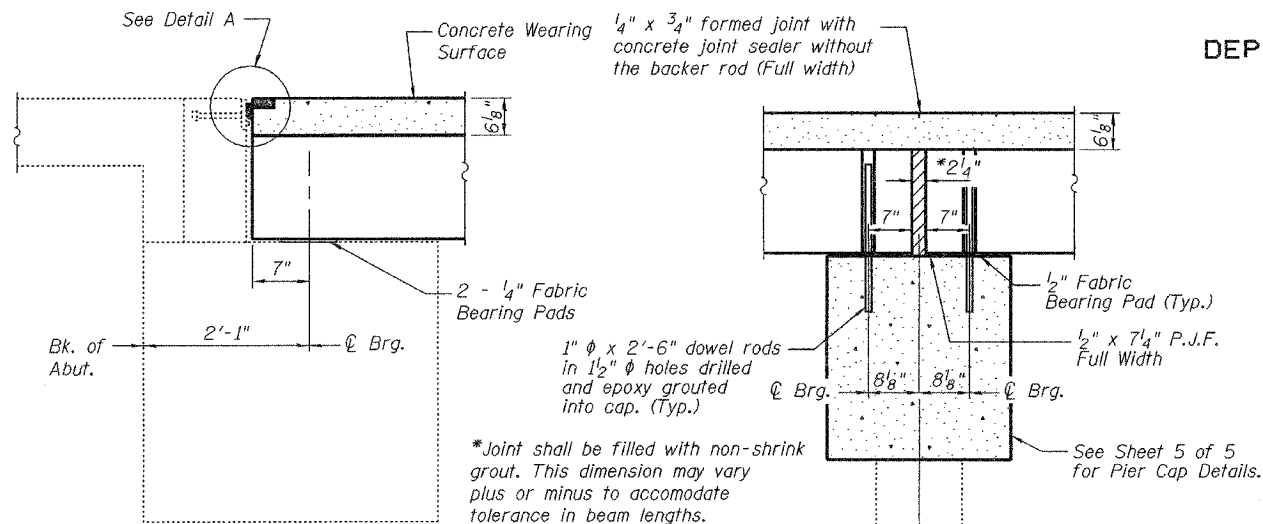


STATE OF ILLINOIS
DEPARTMENT OF TRANSPORTATION

ROUTE NO.	SECTION	COUNTY	TOTAL SHEETS	SHEET NO.
		St. Clair	10	2
FED. ROAD DIST. NO. 7	ILLINOIS	FED. AID PROJECT-		

Contract Number: 76862

Notes:
After beams have been erected, holes shall be drilled into substructure and anchor dowels placed 1'-3" Minimum into existing caps. Dowel holes shall be filled with non-shrink grout to top of beam and allowed to cure min 24 hours prior to grouting the shear keys.

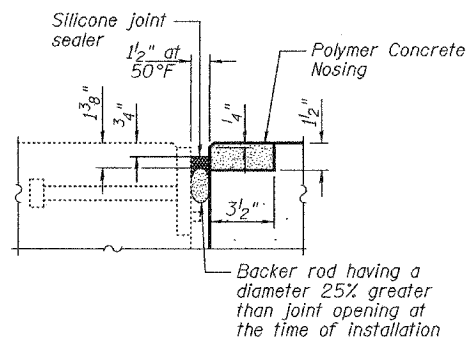


TYPICAL SECTION AT ABUTMENTS

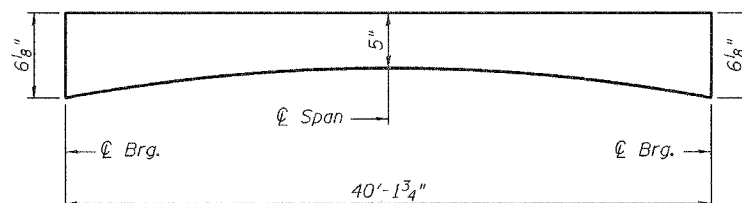
Dims at Rt. L's

TYPICAL SECTION AT PIER

Dims at Rt. L's

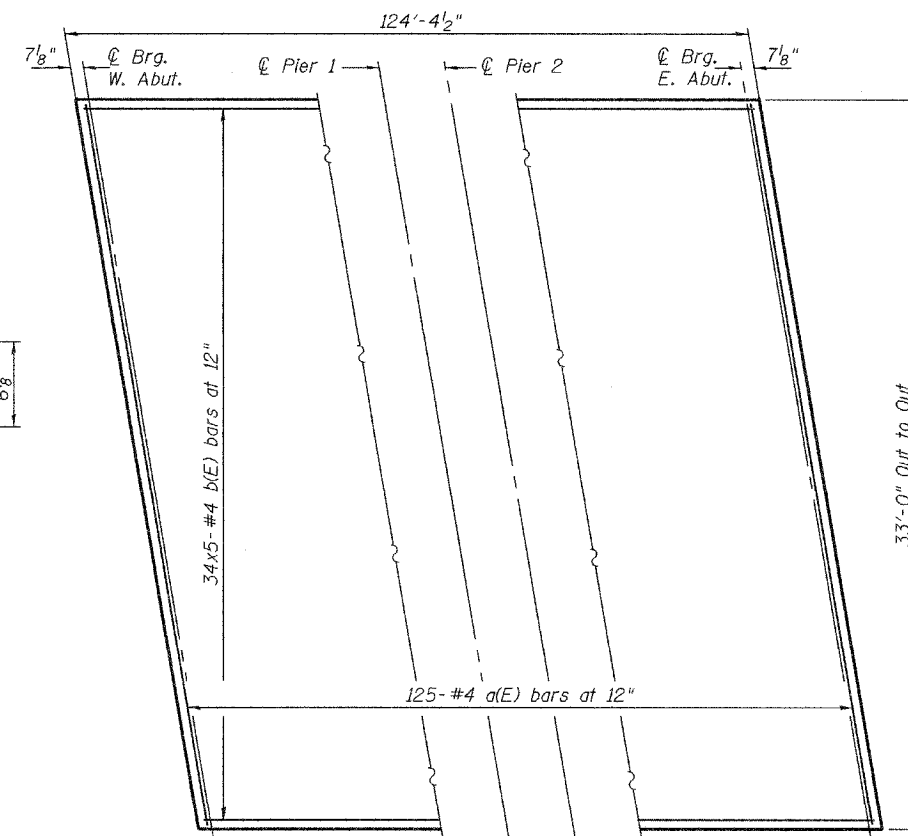


DETAIL A

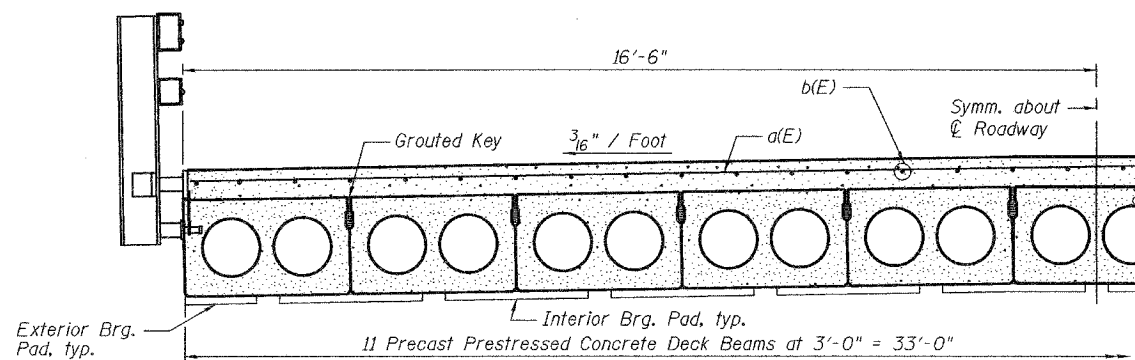


CONCRETE WEARING SURFACE PROFILE

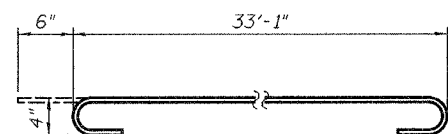
Note:
Thicknesses shown are for Beams 1 thru 5 and 7 thru 11. Thickness for Beam 6 will vary from those shown at beam edges to 4" additional at C Roadway.



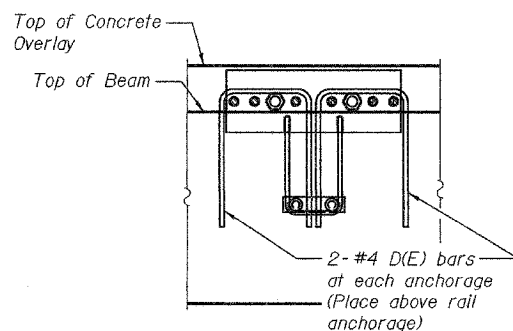
CONCRETE OVERLAY PARTIAL PLAN



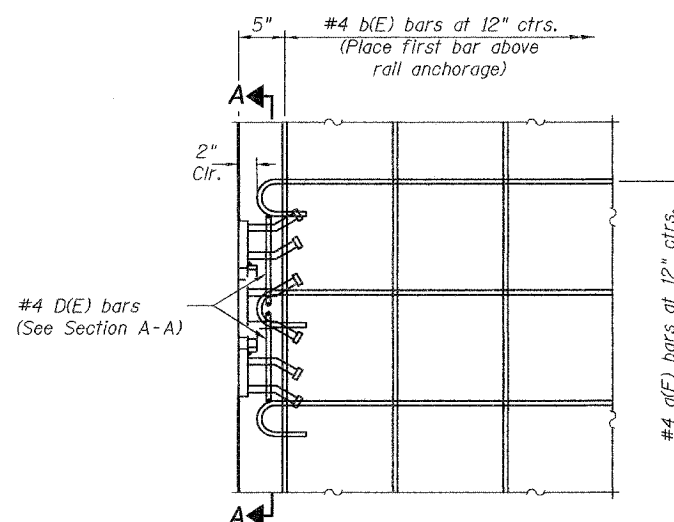
HALF CROSS SECTION



Bar a(E)



SECTION A-A



OVERLAY PARTIAL PLAN AT RAILPOST ANCHORAGE

MIN. BAR LAP
#4 = 1'-4"

BILL OF MATERIAL

Bar	No.	Size	Length	Shape
a(E)	125	#4	34'-1"	U
b(E)	170	#4	26'-0"	—
Reinforcement Bars, Epoxy Coated			Pound	5,800

Reinforcement bars designated (E) shall be epoxy coated.
Bars indicated thus 1 x 2-#5 etc. indicates 1 line of bars with 2 lengths per line.

OVERLAY AND
JOINT DETAILS
F.A.P. RT. 609
ST. CLAIR COUNTY
SN 082-0213

DESIGNED	P.S.J.
CHECKED	A.T.H.
DRAWN	Drew Christopher
CHECKED	P.S.J. A.T.H.

September 20, 2005
EXAMINED *John A. Morris*
ENGINEER OF STRUCTURAL SERVICES
PASSED *Ralph E. Anderson*
ENGINEER OF BRIDGES AND STRUCTURES